

CAT. NO. & DIMENSIONS

| NO. OF CONTACTS (n) | CAT. NO. | DIMENSIONS (NOTE2) | | | |
|---------------------|-------------------|--------------------|---------|---------|---------|
| | | A ± 0.2 | B ± 0.2 | C ± 0.2 | D ± 0.1 |
| 4 | SFW4R-5/6STZ__LF | 9.8 | 8.6 | 3.0 | 5.3 |
| 5 | SFW5R-5/6STZ__LF | 10.8 | 9.6 | 4.0 | 6.3 |
| 6 | SFW6R-5/6STZ__LF | 11.8 | 10.6 | 5.0 | 7.3 |
| 7 | SFW7R-5/6STZ__LF | 12.8 | 11.6 | 6.0 | 8.3 |
| 8 | SFW8R-5/6STZ__LF | 13.8 | 12.6 | 7.0 | 9.3 |
| 9 | SFW9R-5/6STZ__LF | 14.8 | 13.6 | 8.0 | 10.3 |
| 10 | SFW10R-5/6STZ__LF | 15.8 | 14.6 | 9.0 | 11.3 |
| 11 | SFW11R-5/6STZ__LF | 16.8 | 15.6 | 10.0 | 12.3 |
| 12 | SFW12R-5/6STZ__LF | 17.8 | 16.6 | 11.0 | 13.3 |
| 13 | SFW13R-5/6STZ__LF | 18.8 | 17.6 | 12.0 | 14.3 |
| 14 | SFW14R-5/6STZ__LF | 19.8 | 18.6 | 13.0 | 15.3 |
| 15 | SFW15R-5/6STZ__LF | 20.8 | 19.6 | 14.0 | 16.3 |
| 16 | SFW16R-5/6STZ__LF | 21.8 | 20.6 | 15.0 | 17.3 |
| 17 | SFW17R-5/6STZ__LF | 22.8 | 21.6 | 16.0 | 18.3 |
| 18 | SFW18R-5/6STZ__LF | 23.8 | 22.6 | 17.0 | 19.3 |
| 19 | SFW19R-5/6STZ__LF | 24.8 | 23.6 | 18.0 | 20.3 |
| 20 | SFW20R-5/6STZ__LF | 25.8 | 24.6 | 19.0 | 21.3 |
| 21 | SFW21R-5/6STZ__LF | 26.8 | 25.6 | 20.0 | 22.3 |
| 22 | SFW22R-5/6STZ__LF | 27.8 | 26.6 | 21.0 | 23.3 |
| 23 | SFW23R-5/6STZ__LF | 28.8 | 27.6 | 22.0 | 24.3 |
| 24 | SFW24R-5/6STZ__LF | 29.8 | 28.6 | 23.0 | 25.3 |
| 25 | SFW25R-5/6STZ__LF | 30.8 | 29.6 | 24.0 | 26.3 |
| 26 | SFW26R-5/6STZ__LF | 31.8 | 30.6 | 25.0 | 27.3 |
| 27 | SFW27R-5/6STZ__LF | 32.8 | 31.6 | 26.0 | 28.3 |
| 28 | SFW28R-5/6STZ__LF | 33.8 | 32.6 | 27.0 | 29.3 |
| 29 | SFW29R-5/6STZ__LF | 34.8 | 33.6 | 28.0 | 30.3 |
| 30 | SFW30R-5/6STZ__LF | 35.8 | 34.6 | 29.0 | 31.3 |

CAT. NO.

SFW (n) R - 5 ST Z __ LF

SERIES NAME

NO. OF CONTACTS

RIGHT ANGLE TYPE

FOR CIC, CONTACT DIRECTION

5. LOWER CONTACT TYPE

6. UPPER CONTACT TYPE

FOR AUTOMATIC MOUNTING (SMT)



VARIATION

PACKAGE STYLE

LEAD FREE

NOTES

1. THIS PRODUCT IS THE CONNECTOR USED FOR CIC AND COPES WITH AUTOMATIC MOUNTING (SMT).
2. SEE PART DRAWINGS FOR DIMENSIONS A~D.

| | | | | | | | | | | | | | |
|-------------|----------|----------|--------|---------------------------------------|--|----------------------------------|--|---|--|---|--|--------------|--|
| mat'l. code | | | | surface ISO 1302 ✓ | | tolerance ISO 406 ISO 1101 | | projection  | | product family 58RF | | CODE JP | |
| ltr | ecn no | dr | date | tolerances unless otherwise specified | | | | mm | | title CAT. NO. TABLE FOR 1mm SPACING SMT CONNECTOR (CAT.NO. SFW__R-5/6STZ__LF) | | | |
| A | J07-0086 | H.T. | 2/5/07 | angles | | linear | | scale | | dwg no | | sheet 1 of 1 | |
| | | | | | | | | | | JSA 97270 | | size A4 | |
| | | | | dr | | 2/8/07 | |  | | type Product Customer Drawing | | | |
| | | | | enrg | | 2/5/07 | | | | | | | |
| | | | | chr | | 2/7/07 | | | | | | | |
| | | | | appd | | 2/7/07 | | | | | | | |
| sheet index | | revision | | A | | | | | | | | Rev. A | |
| sheet | | 1 | | | | | | | | | | | |

SC-SFW12 JSA97271 97272 97273 97274 97275 91675
form: A4

1

2

PDM: Rev:A

STATUS Released

Printed: Jul 06, 2009

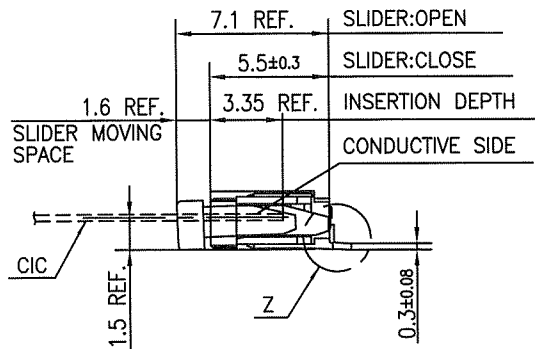
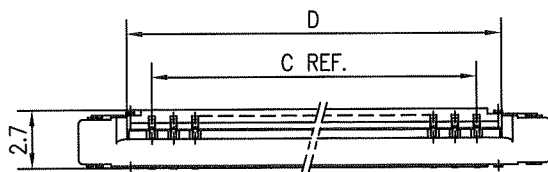
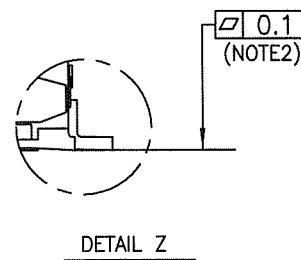
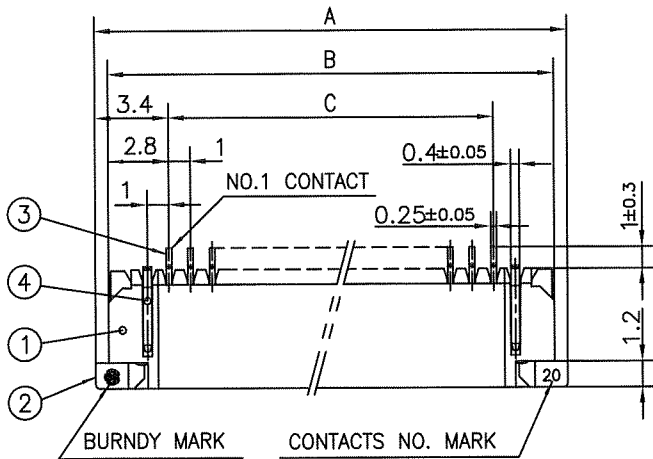
n : NO. OF CONTACTS

B

D

1

2



| PT. NO. | PARTS NAME | MATERIAL | Q'TY | NOTE |
|---------|----------------|---|------|------------------|
| 1 | HOUSING | PPS RESIN GLASS REINFORCED (UL94V-0) | 1 | COLOR:BROWN |
| 2 | SLIDER | | 1 | COLOR:BEIGE |
| 3 | CONTACT | PHOSPHOR BRONZE | n | PLATING:THIN TIN |
| 4 | MOUNTING PLATE | | 2 | PLATING:TIN |

n : NO. OF CONTACTS

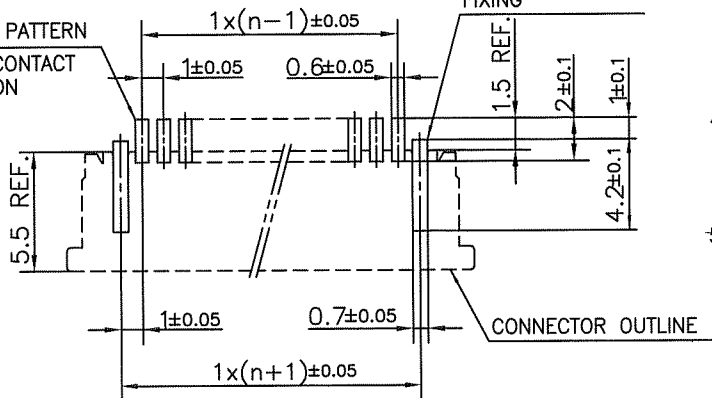
NOTES

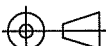






1. THIS PRODUCT IS THE CONNECTOR USED FOR CIC AND COPES WITH AUTOMATIC MOUNTING (SMT).
2. FLATNESS FOR CONTACT TERMINAL HOUSING MUST BE WITHIN TOLERANCE IN Z PORTION DETAILED DRAWING.
3. THIS PRODUCT IS UPPER CONTACT TYPE CONNECTOR.
4. THIS PRODUCT MEETS EUROPEAN UNION DIRECTIVES AND OTHER COUNTRY REGULATIONS AS DESCRIBED IN GS-22-008
5. THE HOUSING WILL WITHSTAND EXPOSURE TO 260°C PEAK TEMPERATURE FOR 10 SECONDS IN A REFLOW SOLDERING OVEN.

RECOMMENDED PC BOARD LAYOUT
(COMPONENT SIDE)

BASIC PATTERN
NO.1 CONTACT
POSITION

PATTERN FOR
MOUNTING PLATE
FIXING



| | | | | | | | | | | | | | | | | |
|-------------|----------|----------|--------|---------------------------------------|---|----------------------------------|--|---|---|---|--|--|--|--------------|--|-----------|
| mat'l. code | | | | surface ISO 1302 ✓ | | tolerance ISO 406 ISO 1101 | | projection  | | product family 58RF | | | | CODE JP | | |
| ltr | ecn no | dr | date | tolerances unless otherwise specified | | | | | |  | title 1mm SPACING SMT CONNECTOR (Cat. No. SFW__R-6STZ__LF) | | | | | |
| A | J07-0086 | H.T | 2/5/07 | angles | linear | ±0.2 | | | | | | | | | | |
| | | | | | | | | |  | dwg no | | | | sheet 1 of 1 | | size |
| | | | | dr |  | 2/5/07 | | | | JSA 97272 | | | | A4 | | |
| | | | | enrg |  | 2/5/07 | | | | | | | | | | |
| | | | | chr |  | 2/7/07 | | | | | | | | | | |
| | | | | appd |  | 2/7/07 | | | | type Product Customer Drawing | | | | | | Rev. A |
| sheet index | | revision | | A | | | | | | | | | | | | |
| | | sheet | | 1 | | | | | | | | | | | | |

SC-SFW12
form: A4

CAT. NO. & DIMENSIONS

| NO. OF CONTACTS (n) | CAT. NO. (NOTE2) | DIMENSIONS (NOTE3) | | |
|---------------------|-------------------|--------------------|---------|---------|
| | | E ± 5 | F ± 0.3 | G ± 0.1 |
| 4 | SFW4R-5/6STZE1LF | 20.4 | 16 | — |
| 5 | SFW5R-5/6STZE1LF | 28.4 | 24 | — |
| 6 | SFW6R-5/6STZE1LF | 28.4 | 24 | — |
| 7 | SFW7R-5/6STZE1LF | 28.4 | 24 | — |
| 8 | SFW8R-5/6STZE1LF | 28.4 | 24 | — |
| 9 | SFW9R-5/6STZE1LF | 28.4 | 24 | — |
| 10 | SFW10R-5/6STZE1LF | 28.4 | 24 | — |
| 11 | SFW11R-5/6STZE1LF | 28.4 | 24 | — |
| 12 | SFW12R-5/6STZE1LF | 28.4 | 24 | — |
| 13 | SFW13R-5/6STZE1LF | 36.4 | 32 | 28.4 |
| 14 | SFW14R-5/6STZE1LF | 36.4 | 32 | 28.4 |
| 15 | SFW15R-5/6STZE1LF | 36.4 | 32 | 28.4 |
| 16 | SFW16R-5/6STZE1LF | 36.4 | 32 | 28.4 |
| 17 | SFW17R-5/6STZE1LF | 48.4 | 44 | 40.4 |
| 18 | SFW18R-5/6STZE1LF | 48.4 | 44 | 40.4 |
| 19 | SFW19R-5/6STZE1LF | 48.4 | 44 | 40.4 |
| 20 | SFW20R-5/6STZE1LF | 48.4 | 44 | 40.4 |
| 21 | SFW21R-5/6STZE1LF | 48.4 | 44 | 40.4 |
| 22 | SFW22R-5/6STZE1LF | 48.4 | 44 | 40.4 |
| 23 | SFW23R-5/6STZE1LF | 48.4 | 44 | 40.4 |
| 24 | SFW24R-5/6STZE1LF | 48.4 | 44 | 40.4 |
| 25 | SFW25R-5/6STZE1LF | 48.4 | 44 | 40.4 |
| 26 | SFW26R-5/6STZE1LF | 48.4 | 44 | 40.4 |
| 27 | SFW27R-5/6STZE1LF | 48.4 | 44 | 40.4 |
| 28 | SFW28R-5/6STZE1LF | 60.4 | 56 | 52.4 |
| 29 | SFW29R-5/6STZE1LF | 60.4 | 56 | 52.4 |
| 30 | SFW30R-5/6STZE1LF | 60.4 | 56 | 52.4 |

CAT. NO.

SFW (n) R - 5 ST Z E1 LF

SERIES NAME

NO. OF CONTACTS

RIGHT ANGLE TYPE

FOR CIC CONTACT DIRECTION

5. LOWER CONTACT TYPE

6. UPPER CONTACT TYPE

FOR AUTOMATIC MOUNTING (SMT)

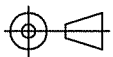
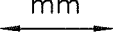
VARIATION

TAPE PACKAGING

LEAD FREE

NOTES

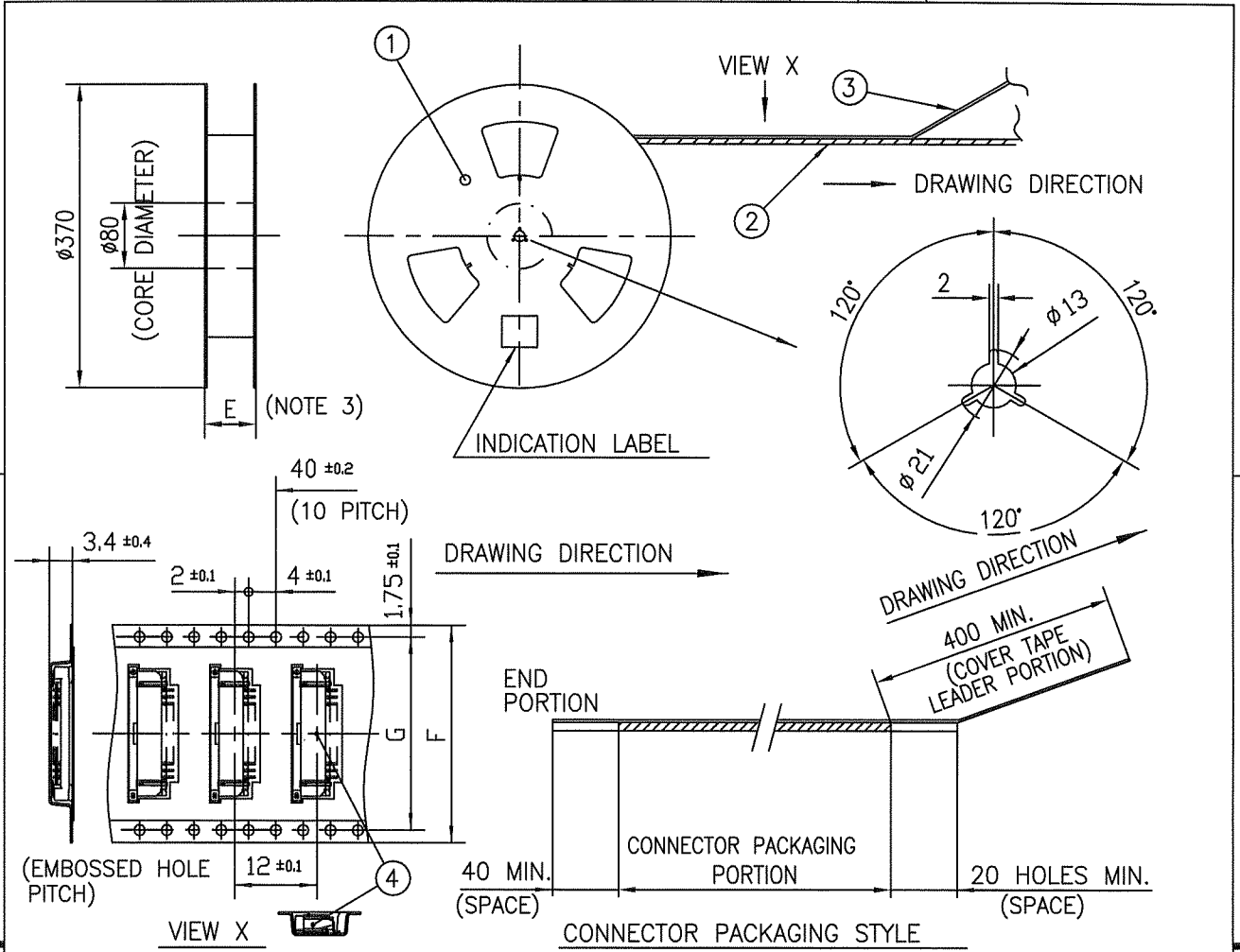
1. THIS PRODUCT IS THE CONNECTOR USED FOR CIC AND COPES WITH AUTOMATIC MOUNTING (SMT).
2. THIS CATALOG NO. INDICATES PLASTIC TAPE PACKAGED CONNECTOR.
3. SEE PART DRAWINGS FOR DIMENSIONS E~G.

| | | | | | | | | | | | | | |
|-------------|----------|------------|--------|---------------------------------------|--|----------------------------------|--|---|--|---|--|------------|--|
| mat'l. code | | | | surface ISO 1302 ✓ | | tolerance ISO 406 ISO 1101 | | projection  | | product family 58RF | | CODE JP | |
| ltr | ecn no | dr | date | tolerances unless otherwise specified | | | | mm  | | title CAT. NO. TABLE FOR PLASTIC TAPE PACKAGED 1mm SPACING SMT CONNECTOR (CAT.NO. SFW__R-5/6STZE1LF) | | | |
| A | J07-0086 | H.T. | 2/5/07 | angles | | linear | | scale \propto | | dwg no JSA 97273 | | | |
| | | | | dr | | engr | | chr | | sheet 1 of 1 size A4 | | | |
| | | | | appd | | S. Chudamani | | 2/5/07 | | type Product Customer Drawing | | | |
| sheet index | | revision A | | sheet 1 | | | | | | | | Rev. A | |

SC-SFW12 form: A4 JSA97270 97274 97275

1

2



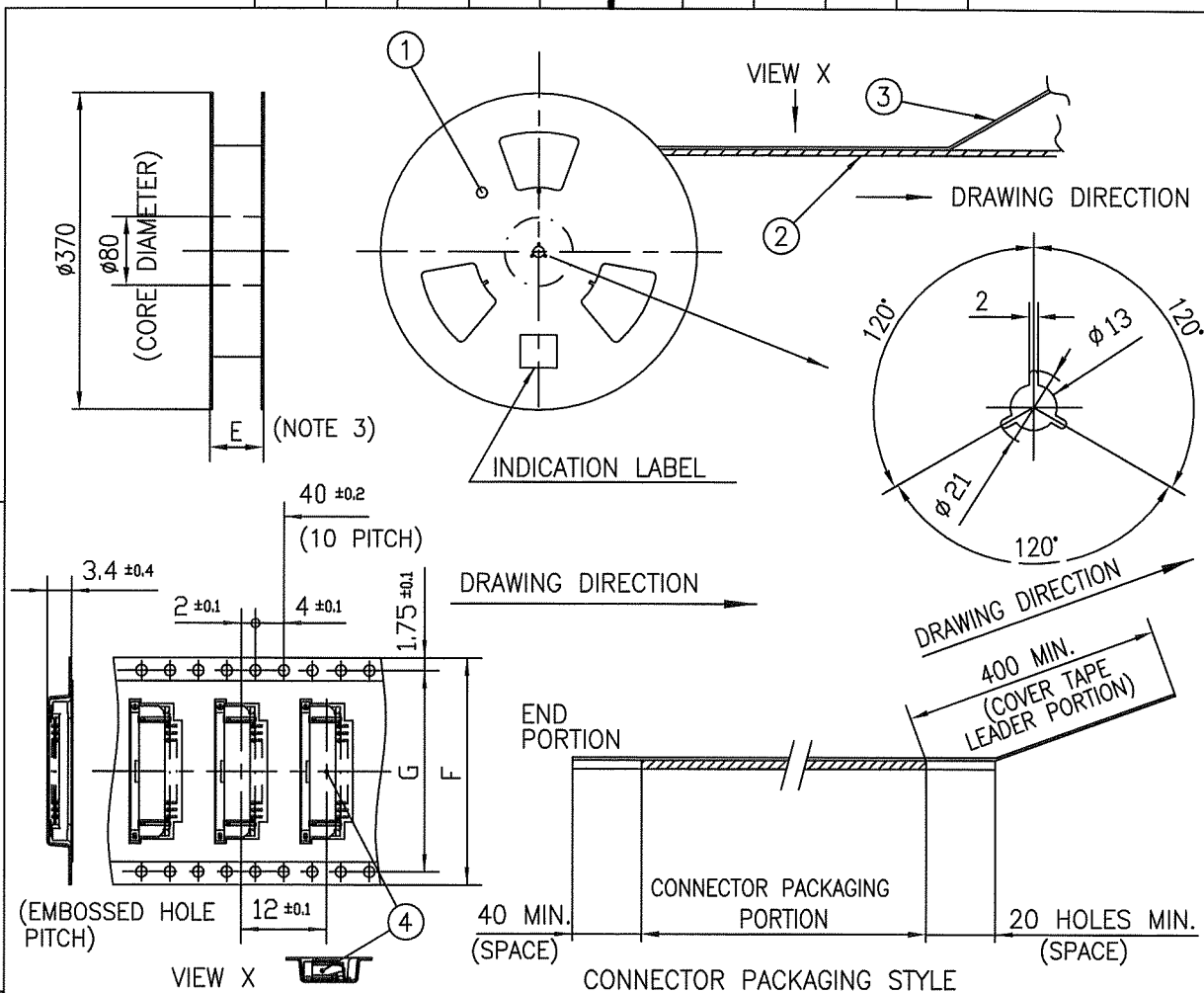
| PT. NO. | PARTS NAME | CAT. NO. | MATERIAL | Q'TY | NOTE |
|---------|-----------------------|-----------------|------------------|------|--------------------|
| 1 | REEL | | CARDBOARD | 1 | COLOR:WHITE |
| 2 | PLASTIC (EMBOSS) TAPE | | PET | | COLOR:TRANSPARENCY |
| 3 | COVER | | POLYESTER | | COLOR:TRANSPARENCY |
| 4 | CONNECTOR | SFW__R-5STZ__LF | SEE ATTACHED DWG | 2000 | LOWER CONTACT TYPE |

NOTES

1. THIS IS PLASTIC TAPE PACKAGED CONNECTOR USED FOR CIC AND COPES WITH AUTOMATIC MOUNTING (SMT).
2. SEE JIS C 0806 (PACKING OF ELECTRONIC COMPONENTS ON CONTINUOUS TAPES (SURFACE MOUNTING DEVICES)) FOR SHAPE AND DIMENSIONS OF PLASTIC (EMBOSS) TAPE AND REEL.
3. E DIMENSION IS PORTION OF THE CORE.

| | | | | | | | |
|-------------|----------|------|--------|---|------------|---|---------|
| mat'l. code | | | | surface <input checked="" type="checkbox"/> ISO 1302 <input checked="" type="checkbox"/> tolerance <input checked="" type="checkbox"/> ISO 406 <input checked="" type="checkbox"/> ISO 1101 | projection | product family 58RF | CODE JP |
| ltr | ecn no | dr | date | tolerances unless otherwise specified | | title PLASTIC TAPE PACKAGED 1mm SPACING SMT CONNECTOR (CAT. NO. SFW__R-5STZE1LF) | |
| A | J07-0086 | H.T. | 2/5/07 | angles | linear | | |
| | | | | ±5° | ±5 | | |
| | | | | dr | 2/8/07 | dwg no sheet 1 of 1 size JSA 97274 A4 | |
| | | | | enr | 2/8/07 | | |
| | | | | chr | 2/9/07 | | |
| | | | | app | 2/7/07 | | |
| sheet index | revision | A | | | | type Product Customer Drawing | |
| | sheet | 1 | | | | | |

SC-SFW12 JSA97273
form: A4



| PT. NO. | PARTS NAME | CAT. NO. | MATERIAL | Q'TY | NOTE |
|---------|-----------------------|-----------------|------------------|-------|--------------------|
| 1 | REEL | _____ | CARDBOARD | 1 | COLOR:WHITE |
| 2 | PLASTIC (EMBOSS) TAPE | _____ | PET | _____ | COLOR:TRANSPARENCY |
| 3 | COVER | _____ | POLYESTER | _____ | COLOR:TRANSPARENCY |
| 4 | CONNECTOR | SFW__R-6STZ__LF | SEE ATTACHED DWG | 2000 | UPPER CONTACT TYPE |

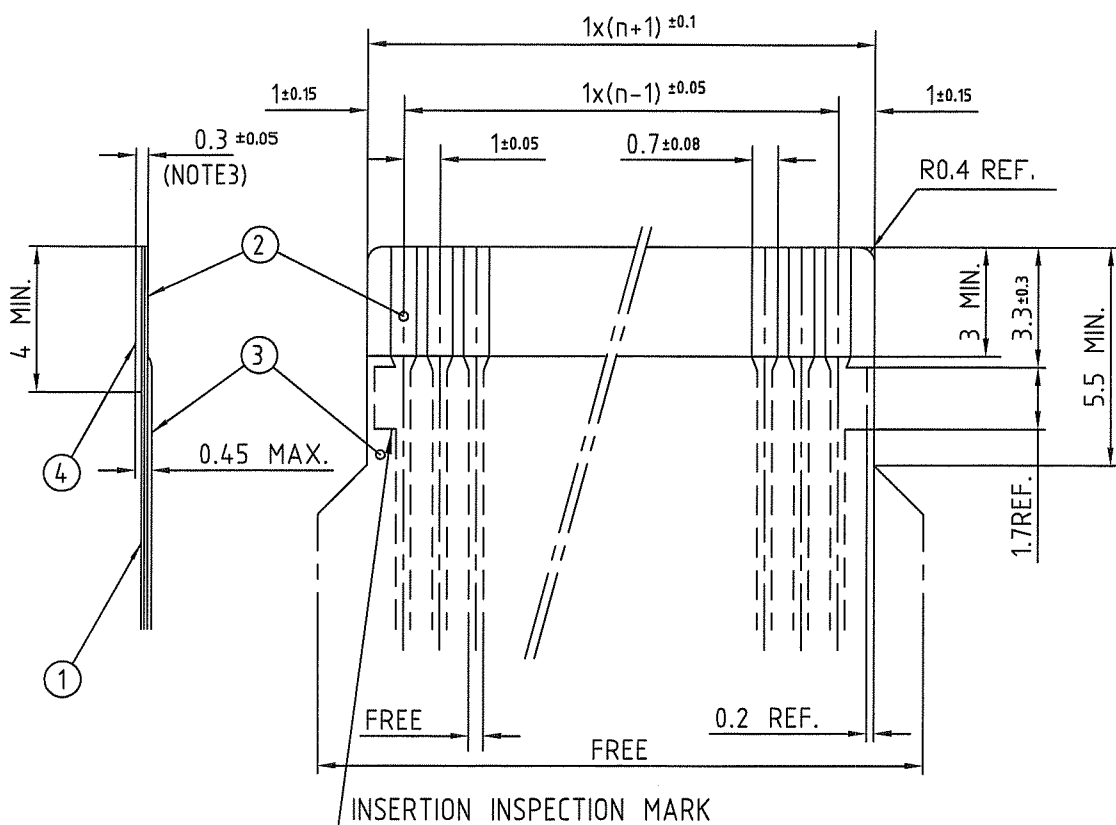
NOTES

1. THIS IS PLASTIC TAPE PACKAGED CONNECTOR USED FOR CIC AND COPES WITH AUTOMATIC MOUNTING (SMT).
2. SEE JIS C 0806 (PACKING OF ELECTRONIC COMPONENTS ON CONTINUOUS TAPES (SURFACE MOUNTING DEVICES)) FOR SHAPE AND DIMENSIONS OF PLASTIC (EMBOSS) TAPE AND REEL.
3. E DIMENSION IS PORTION OF THE CORE.

[illegible]

RECOMMENDED CABLE (CIC)

n:NO. OF CONDUCTOR



| PT. NO. | PARTS NAME | MATERIAL | THICKNESS (um) | |
|---------|-----------------|---------------------------------|----------------|-----|
| 1 | BASE FILM | POLYESTER OR EQUAL | 75 | 25 |
| 2 | CONDUCTOR | CARBON PASTE OVER SILVER PASTE | 10 MIN. | |
| 3 | OVERLAY | POLYIMIDE OR POLYESTER OR EQUAL | — | |
| 4 | SUPPORTING TAPE | POLYESTER OR POLYIMIDE OR EQUAL | 188 | 250 |

- NOTES
1. NO BURR AT EACH PORTION.
 2. NO PEELING IN COMMON USE.
 3. TOTAL THICKNESS LIMIT OF EACH MATERIAL (INCLUDING ADHESIVE AGENT) IS SPECIFIED.

| | | | | | | | | | | | |
|-------------|----------|-----|-----------|--|-------------|------------|--------------|-----------------------|--------------------------|---------|---------|
| mat'l. code | | | | surface 58 / tolerance ISO 1302 ✓ / ISO 406 / ISO 1101 | | projection | | product family 58RF | | CODE JP | |
| lfr | ecn no | dr | date | tolerances unless otherwise specified | | mm | | title | | | |
| 1 | — | — | 4/12/'93 | angles | linear | mm | | RECOMMENDED CABLE | | | |
| AA | J05-0055 | H.T | 2/4/'05 | | | scale X | | (Cat. No. SFW_R-5/6_) | | | |
| AB | J06-0398 | H.T | 9/26/'06 | | | FCJ | | dwg no | | | |
| AC | J09-0363 | M.Y | 2009-10-8 | dr | M.YAMASHITA | 2009-10-8 | sheet 1 of 1 | | size | | |
| | | | | enr | M.YAMASHITA | 2009-10-8 | JSA 91675 | | A4 | | |
| | | | | chr | S. M. T. L. | 2009-10-8 | type | | Product Customer Drawing | | |
| | | | | appd | S. de la... | 2009-10-8 | | | | | |
| sheet index | revision | AC | 1 | | | | | | | | Rev. AC |

form: A4

1

2