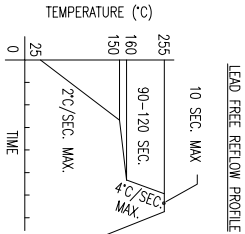
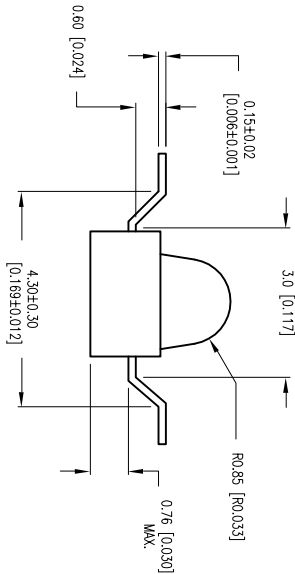
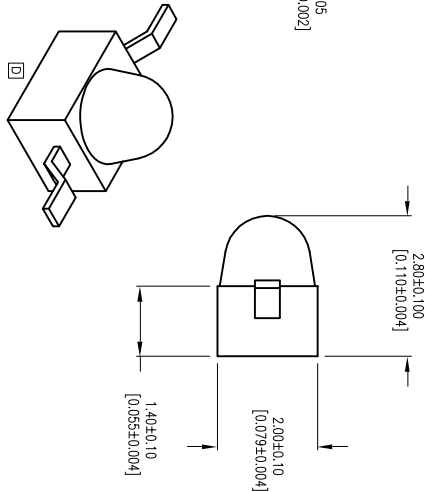
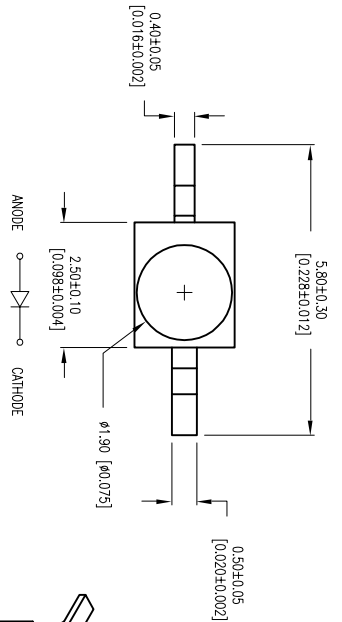


PART NUMBER		SSL-LXA228GC-TR31		REV.	F
DATE	E.C.N. NUMBER AND REVISION COMMENTS				REV.
08.3.94	E.C.N. #10BRDR. & REDRAWN.				A
08.16.94	E.C.N. #10BRDR. & REDRAWN.				B
11.29.94	E.C.N. #10BRDR. & REDRAWN.				C
01.05.01	E.C.N. #10BRDR. & REDRAWN.				D
06.18.01	E.C.N. #10BRDR. & REDRAWN.				E
11.14.06	E.C.N. #10BRDR. & REDRAWN.				F



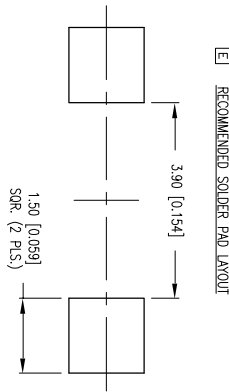
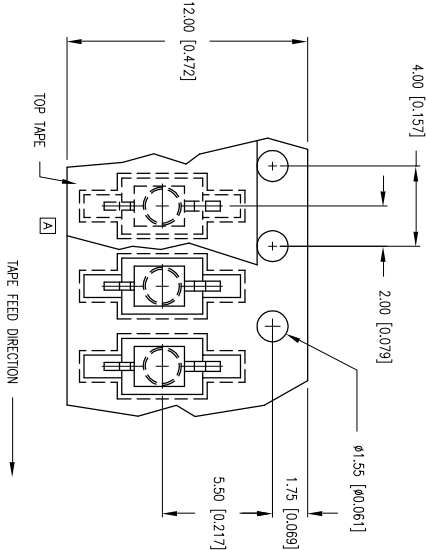
TOTAL TIME ABOVE 220°C IS 60 SECONDS MAX.

- NOTES:
1. 1,000 PIECES PER REEL.
  2. THE CATHODE IS ORIENTED TOWARDS THE TAPE SPROCKET HOLE.

REPLACES PART #: SSL-LXA228GC-TR31

LIMITS OF SAFE OPERATION AT 25°C PER DIE			
PARAMETER	MAX	UNITS	
PEAK FORWARD CURRENT*	150	mA	
STEADY CURRENT	25	mA	
POWER DISSIPATION	105	mW	
DERATE FROM 25°C	-1.2	mW/°C	
OPERATING, STORAGE TEMP.	-40 TO +85	°C	

ELECTRO-OPTICAL CHARACTERISTICS TA=25°C IF=20mA				
PARAMETER	MIN	TYP	MAX	TEST COND
PEAK WAVELENGTH	565		2.8	nm
FORWARD VOLTAGE	2.1			VF IF=100µA
REVERSE VOLTAGE	5.0			VR IF=20mA
AXIAL INTENSITY	30			mod
VIEWING ANGLE	25			2x theta
EMITTED COLOR:	GREEN			
EPOXY LENS FINISH:	WATER CLEAR			



\*UNLESS OTHERWISE SPECIFIED TOLERANCES PER DECIMAL PRECISION ARE: X=±1 (±0.039), XX=±0.5 (±0.020), XXX=±0.25 (±0.010), XXXX=±0.127 (±0.005), LEAD SIZE=±0.05 (±0.002), LEAD LENGTH=±0.75 (±0.030), MIN= -0.00, DECIMAL PRECISION UNCONTROLLED DOCUMENT



290 E. HELEN ROAD  
PALATINE, IL 60067-6976  
PHONE: +1.847.359.2790  
FAX: +1.847.359.6538  
WEB: WWW.LUMEX.COM

565nm GREEN, AXIAL LED, WATER CLEAR LENS, Z BEND, TAPE AND REEL.

\*\*THE SPECIFICATIONS MAY CHANGE AT ANY TIME WITHOUT NOTICE DUE TO NEW MATERIALS OR PRODUCT IMPROVEMENT.\*\*

CONFIDENTIAL INFORMATION  
THE INFORMATION CONTAINED IN THIS DOCUMENT IS THE PROPERTY OF LUMEX INC. EXCEPT AS SPECIFICALLY AUTHORIZED IN WRITING BY LUMEX INC., THE HOLDER OF THIS DOCUMENT SHALL KEEP ALL INFORMATION CONTAINED HEREIN CONFIDENTIAL AND SHALL PROTECT SAME IN WHOLE OR IN PART FROM DISCLOSURE AND DISSEMINATION TO ALL THIRD PARTIES.

DATE:	11.14.06	DRAWN BY:	JC
PAGE:	1 OF 1	CHKD BY:	--
SCALE:		APRVD BY:	JD
UNIT:	mm [INCH]		