

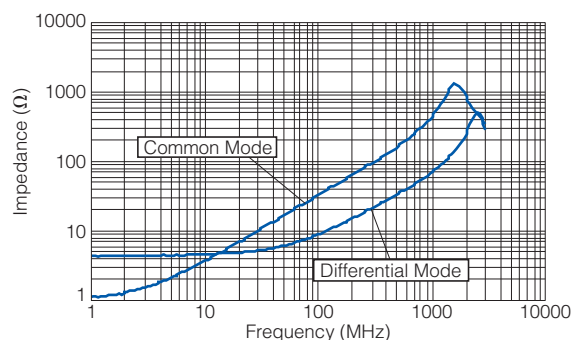
## Ratings

Part Number	Impedance ( $\Omega$ ) at 100 MHz		Rated Voltage (V DC)	Rated Current (mA DC)	DC Resistance ( $\Omega$ )
	Common Mode	Differential Mode			
EXC14CS350U	35 $\Omega \pm 30\%$	15 $\Omega$ max.	5	100	2.0 $\pm 30\%$
EXC14CS900U	90 $\Omega \pm 20\%$	20 $\Omega$ max.	5	100	3.3 $\pm 30\%$

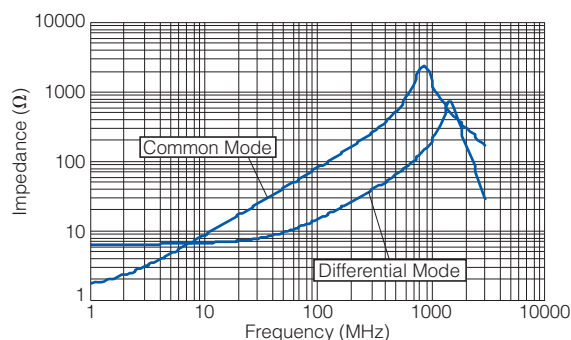
- Category Temperature Range  $-40\text{ }^{\circ}\text{C}$  to  $+85\text{ }^{\circ}\text{C}$

## Impedance Characteristics (Typical)

### EXC14CS350U

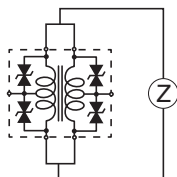


### EXC14CS900U

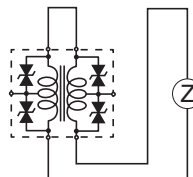


### Measurement Circuit

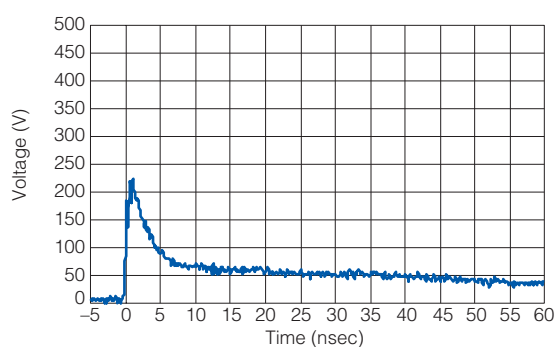
(A) Common Mode



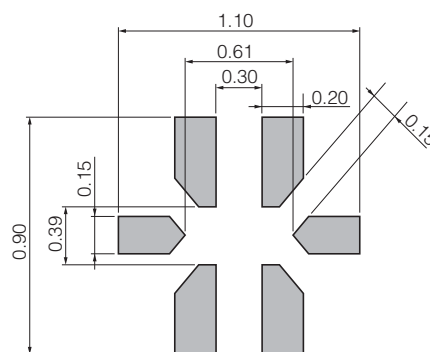
(B) Differential Mode



## ESD Suppression Characteristics(Typical : IEC61000-4-2, 8 kV contact discharge)



## Recommended Land Pattern Design in mm (not to scale)



## As for Packaging Methods, Soldering Conditions and Safety Precautions,

Please see Data Files