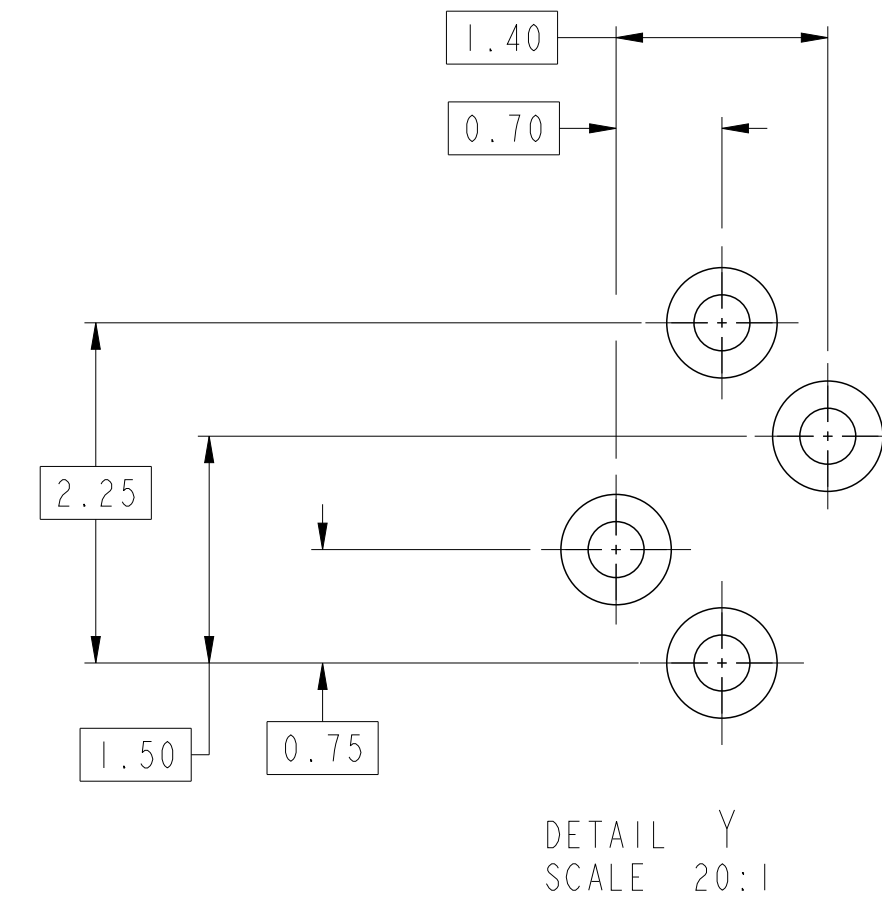
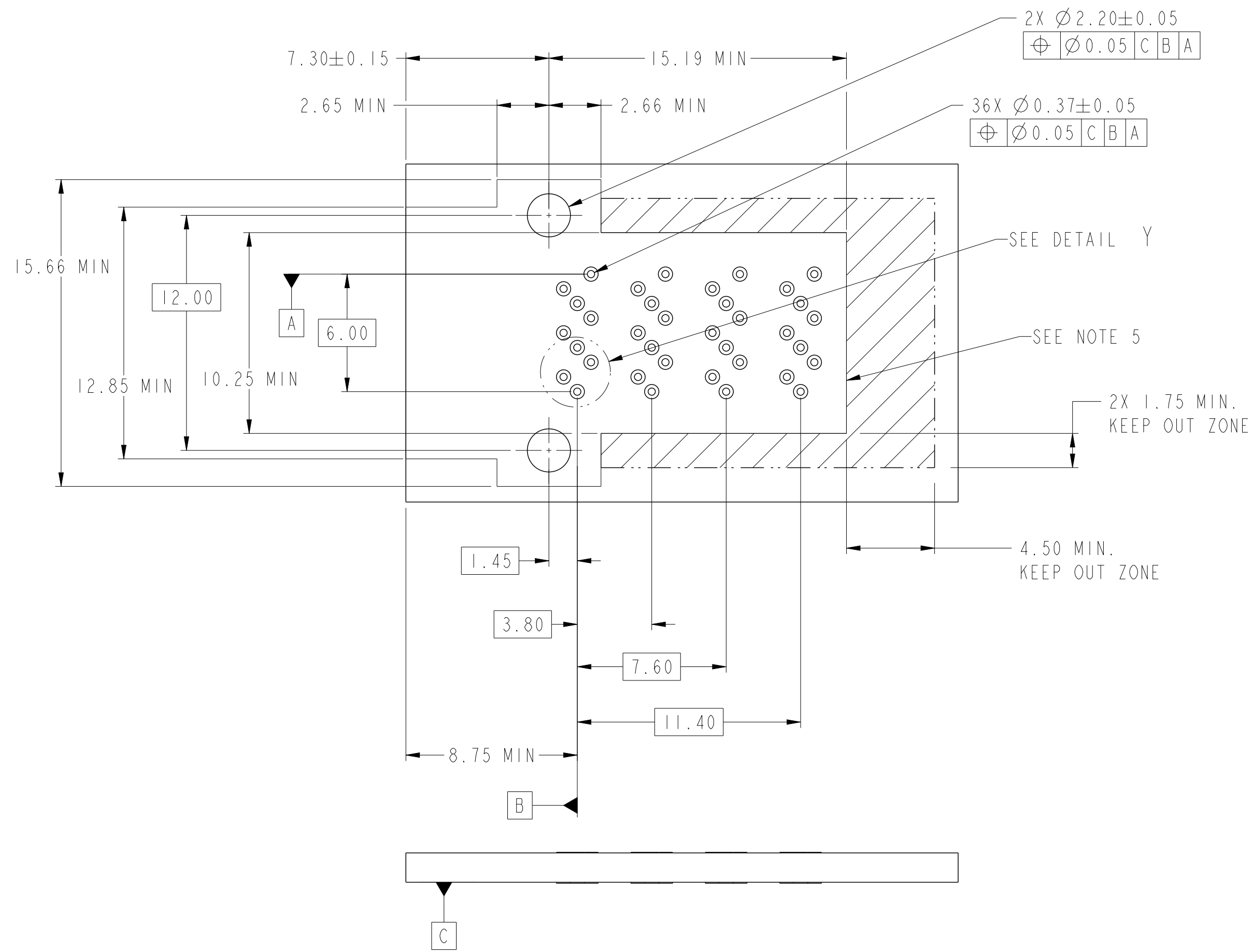


RECOMMENDED PC BOARD LAYOUT

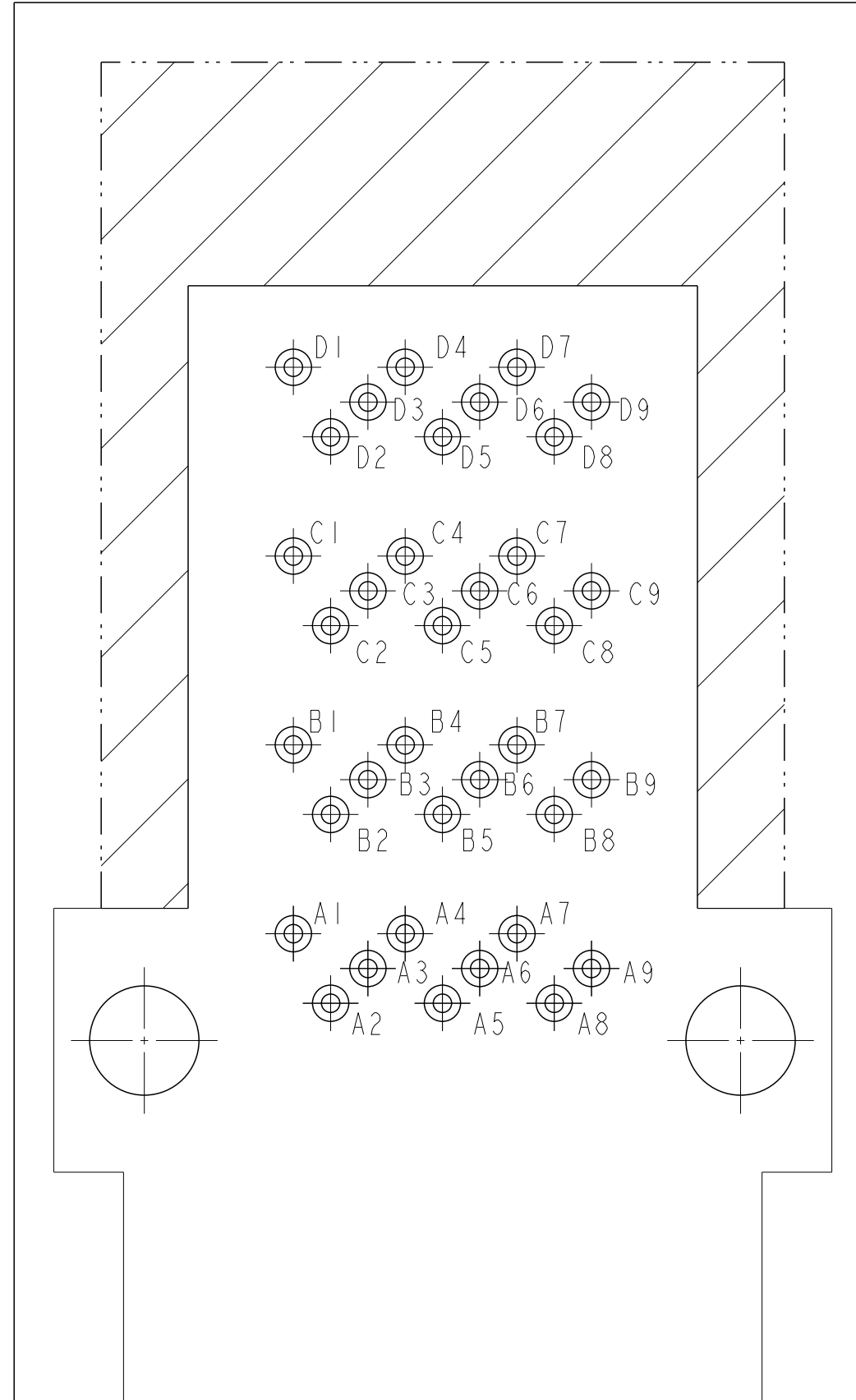


NOTES:

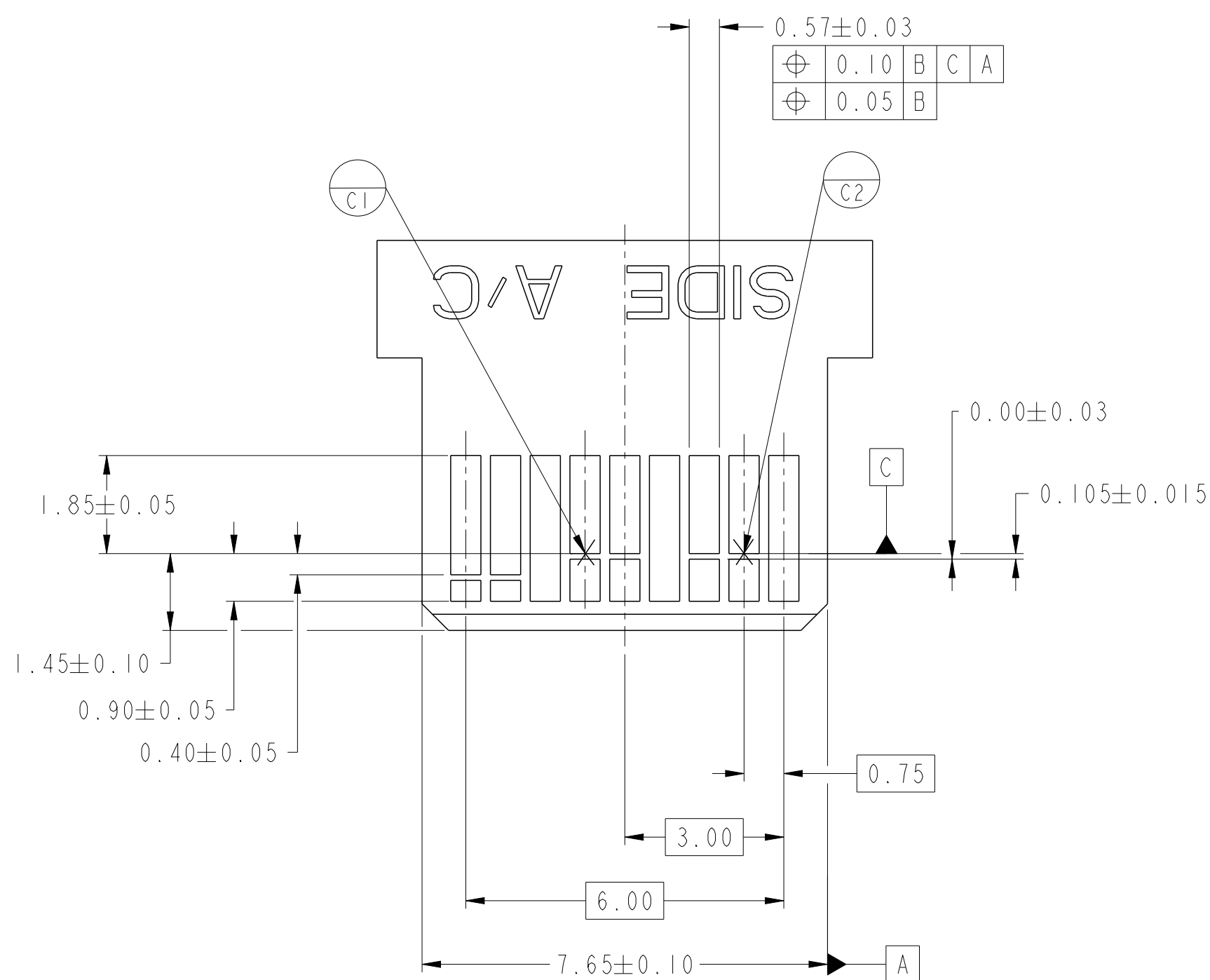
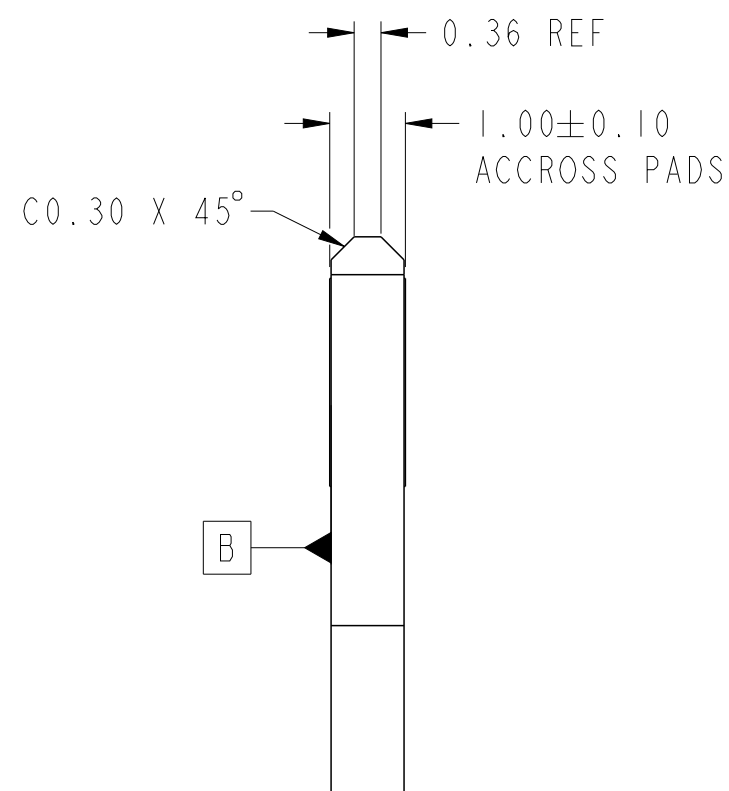
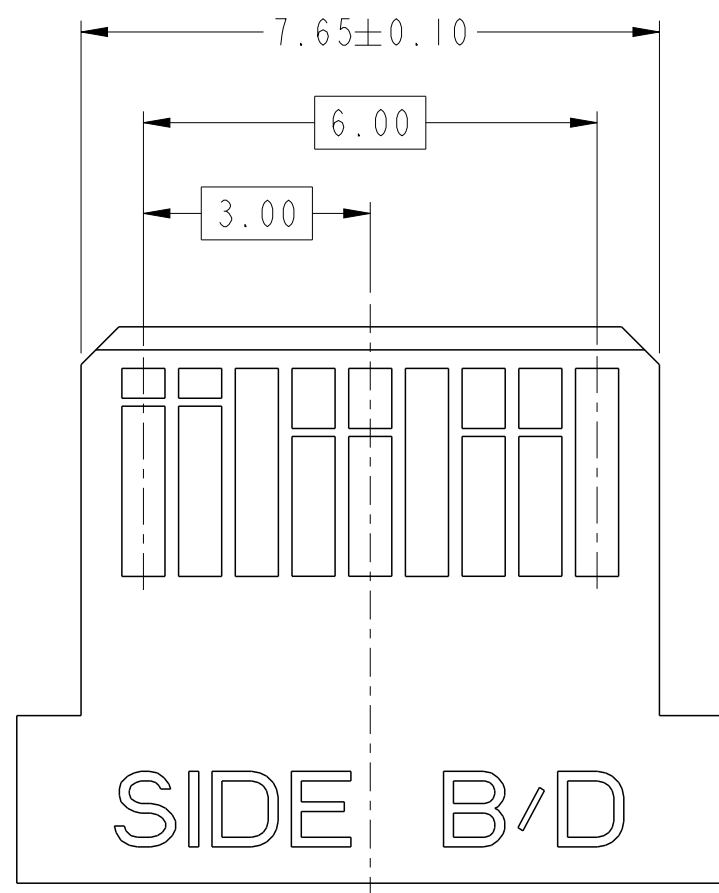
1. RECOMMENDED DRILL SIZE FOR A $\varnothing 0.37$ FINISHED PTH IS $\varnothing 0.457$ (#77 DRILL).
2. RECOMMENDED ANNULAR RING AROUND $\varnothing 0.37$ FINISHED PTH IS $\varnothing 0.73$.
3. MINIMUM RECOMMENDED SPACING : 14.00mm.
4. MINIMUM PCB THICKNESS : 1.57mm.
5. CONNECTOR KEEP OUT AREA.

spec ref	-	dr	Mark Gray	2010/08/04	projection	MM	size	A2	scale	4:1
tolerance std	ASME Y14.5	eng	Jacklin Zou	2015/12/09			ecn no	ELX-DG-17937-1	rel level	Released
TOLERANCES UNLESS OTHERWISE SPECIFIED		chr	Zhen Luo	2015/12/22						
		appr	Pei-Ming Zheng	2015/12/23						
surface	✓	product family	MINI-SAS HD			cat. no.	IXI INTERNAL ASSEMBLY		dwg no	10112632
ASME Y14.5	linear	0.X	±0.25	FCJ	MINI-SAS HD	rev	C		Product - Customer Drw	sheet 2 of 4
	angular	0°	±1/2°	www.fci.com						

PIN OUT DESIGNATIONS



spec ref	-			dr	Mark Gray	2010/08/04	projection	MM	size	A2	scale	4:1	
tolerance std	ASME Y14.5			eng	Jacklin Zou	2015/12/09			ecn no	ELX-DG-17937-1			
TOLERANCES UNLESS OTHERWISE SPECIFIED				chr	Zhen Luo	2015/12/22			rel level	Released			
surface	✓	linear	0.X ±0.25 0.XX ±0.15 0.XXX ±-	appr	Pei-Ming Zheng	2015/12/23	product family	MINI-SAS HD		rel level	Released		
ASME Y14.5	angular	0°	±1/2°										
				FCI				title IXI INTERNAL ASSEMBLY MINI-SAS HD		dwg no 10112632		rev C	
				www.fci.com				cat. no. -		Product - Customer Drw		sheet 3 of 4	



NOTES:

- 0.05 MINIMUM KEEP OUT SOLDER MASK AROUND ALL PADS.
- DATUM C TARGETS ARE DEFINED BY THE RESPECTIVE PAD CENTER LINES AND THE LEADING EDGE OF THE TARGET PADS.

spec ref	-	dr	Mark Gray	2010/08/04	projection	MM	size	A2	scale	4:1
tolerance std	ASME Y14.5	eng	Jacklin Zou	2015/12/09			ecn no	ELX-DG-17937-1		
TOLERANCES UNLESS OTHERWISE SPECIFIED		chr	Zhen Luo	2015/12/22			rel level	Released		
		appr	Pei-Ming Zheng	2015/12/23			product family	MINI-SAS HD		
surface	✓	linear	0.X	±0.25		MINI-SAS HD cat. no.	dwg no 10112632	rev C	Product - Customer Drw	
ASME Y14.5	angular	0°	±1/2°	sheet 4 of 4						