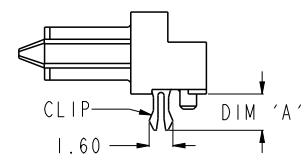
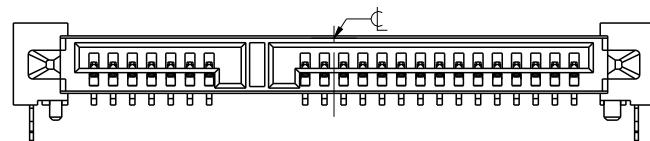
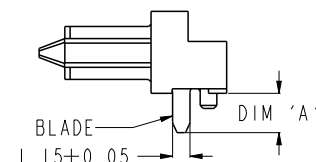
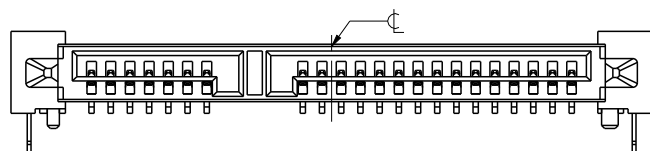


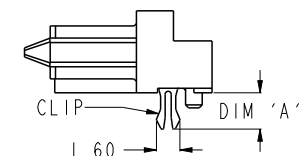
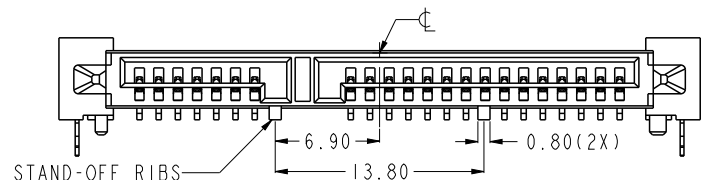
10029364-00XLF/TRLF



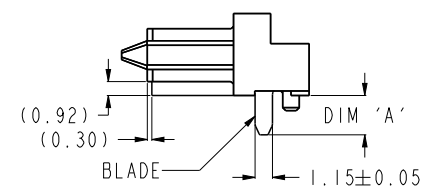
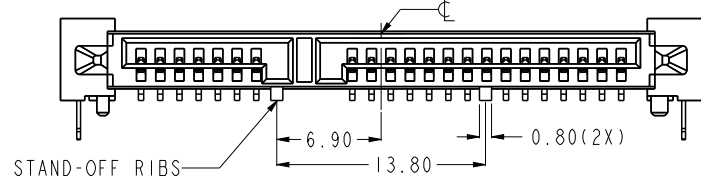
10029364-01XLF/TRLF



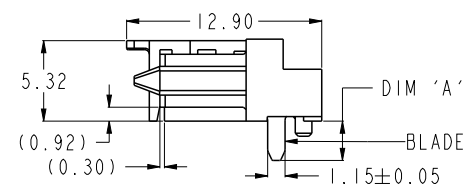
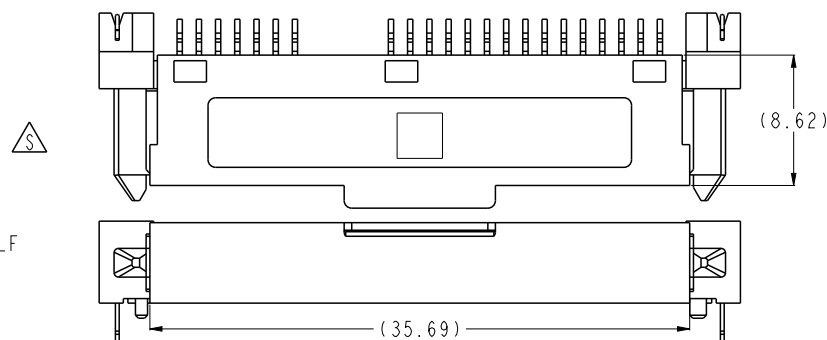
10029364-10XLF/TRLF



10029364-11XLF/TRLF



10029364-11XCLE/C-TRLF



spec ref				dr		w wadmin		2006/02/20		projection		MM		size		A4		scale		1:1			
tolerance std				eng		Koon-Poh Tay		2013/04/10						ecn no		ELX-J-14320-1		rel level		Released			
ASME Y14.5				chr		-		-															
TOLERANCES UNLESS OTHERWISE SPECIFIED				appr		Chen-Hong Tan		2013/04/15		product family				-									
						title		S-ATA COMB RECEPTACLE				dwg no		10029364				rev		S			
surface		linear		0.X		±----																	
				0.XX		±0.20																	
				0.XXX		±----																	
		angular		0°		±°		www.fci.com		cat. no.		-		Product - Customer Drw				sheet 2 of 3					



Copyright FCI.

D

PRODUCT NO.	RECOMMENDED P.C.B. THICKNESS	HOLD DOWN	DIM 'A'	HOUSING WITH STAND-OFF RIBS	PACKAGING
10029364-001LF	1.60	METAL CLIP	2.40	NO	TRAY
10029364-001TRLF					TAPE & REEL
10029364-002LF	1.00		NO	TRAY	
10029364-002TRLF				TAPE & REEL	
10029364-102LF			YES	TRAY	
10029364-102TRLF				TAPE & REEL	
10029364-011LF	--	BLADE	2.60	NO	TRAY
10029364-011TRLF					TAPE & REEL
10029364-111LF			YES	TRAY	
10029364-111TRLF				TAPE & REEL	
10029364-111CLF				TRAY	
10029364-111C-TRLF				TAPE & REEL	

NOTES:-

1. MATERIAL:

- 1) HOUSING : HIGH TEMP. THERMOPLASTIC, UL 94V-0
COLOR : BLACK
- 2) TERMINAL : COPPER ALLOY
- 3) HOLD DOWN : COPPER ALLOY

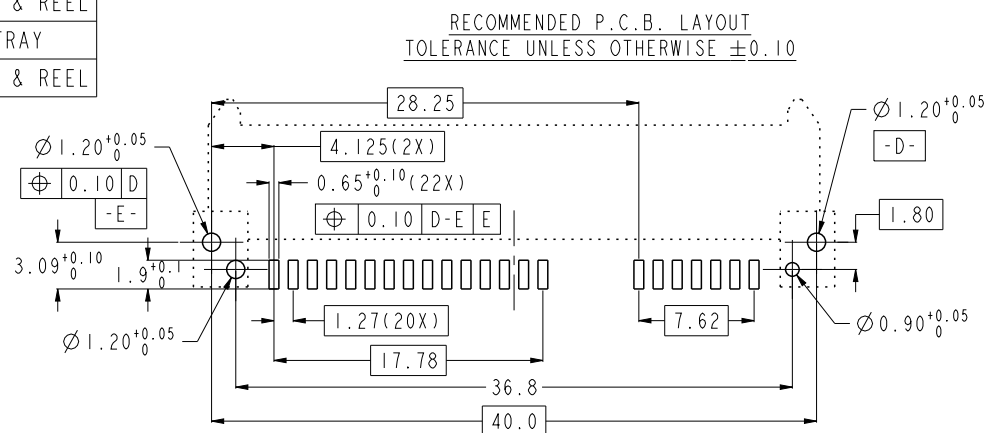
2. FINISH:

- 1) TERMINAL : 30u" GOLD PLATING (CONTACT POINT)
OVER 50u" MIN NICKEL
- 2) SOLDER TAIL : 100u" MIN TIN OVER 50u" NICKEL
- 3) HOLD DOWN : 100u" MIN TIN OVER 50u" NICKEL
3. TRUE POSITION APPLY AT TERMINAL TIP
4. THE STANDARD PACKAGING IS IN TRAY.
5. THE HOUSING WILL WITHSTAND EXPOSURE TO 260°C PEAK
TEMPERATURE FOR 10 SECONDS IN A CONVECTION, INFRA-RED
OR VAPOR PHASE REFLOW OVEN

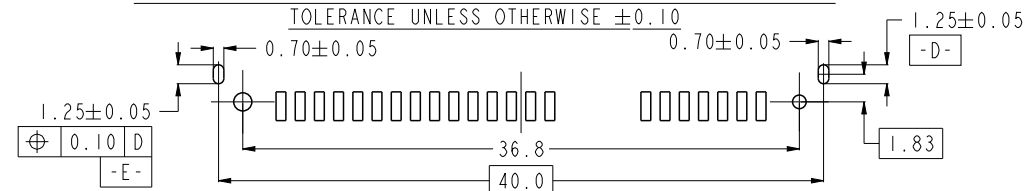
6 THIS PRODUCT MEETS EUROPEAN UNION DIRECTIVES AND OTHER
COUNTRY REGULATIONS AS DESCRIBED IN GS-22-008

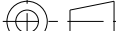

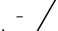

7 PART NUMBERS ENDING IN "LF" ARE MEANT FOR LEAD-FREE
IDENTIFICATION. P/N XXXXXXXX-XXXLF IS EQUIVALENT TO
PREVIOUS P/N XXXXXXXX-XXX

8. A Δ SYMBOL WILL BE NEXT TO ANY DIMENSION, VIEW, OR NOTE
WHICH HAS BEEN MODIFIED WITH THE CURRENT DRAWING REVISION.



ALTERNATIVE P.C.B. LAYOUT
REFER TO RECOMMENDED PCB LAYOUT FOR UNSPECIFIED DIMENSIONS
TOLERANCE UNLESS OTHERWISE ± 0.10



spec ref				dr	w wcadmin	2006/02/20	projection 	MM 	size	A4	scale	1:1	
tolerance std ASME Y14.5	TOLERANCES UNLESS OTHERWISE SPECIFIED			eng	Koon-Poh Tay	2013/04/10			ecn no	ELX-J-14320-1			
				chr	-	-							
				appr	Chen-Hong Tan	2013/04/15	product family			-	rel level		Released
surface 	linear	0.X	±----		title	S-ATA COMB RECEPTACLE R/A SMT TYPE ASSY			dwg no	10029364		rev	S
		0.XX	±0.20										
		0.XXX	±----										
		angular	0°	±°	www.fci.com	cat. no.	-	Product - Customer Drw			sheet 3 of 3		

Print File - REV C - 2009-06-09