

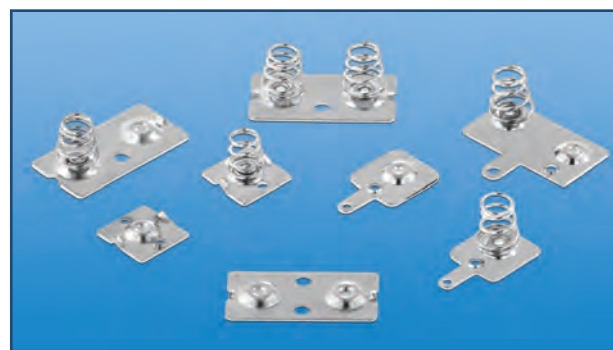
## SPRING & BUTTON CONTACTS

### For "A" - "AA"

- Economical and reliable contacts are ideal for molded cases with self contained battery compartments
- Single and dual contact designs available for "A" & "AA" size batteries
- "Solder tab" design for either wire lead or PC mounting
- Unique spring contacts adjust to variations in battery lengths
- Reliable spring contacts assure low contact resistance and a dependable connection
- Space saving, economical, excellent mechanical construction

#### MATERIAL:

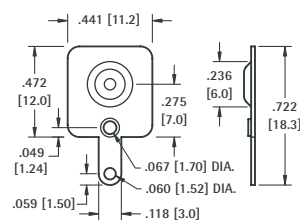
**Plate:** .020 (.51) thick Steel, Nickel Plate **Spring:** Spring Steel, Nickel Plate



Refer to page 27 for Battery Contact Layout & Mounting Details

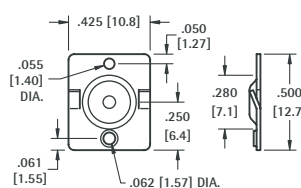
### For "A" - "AA"

#### (+) POSITIVE BUTTON WITH TAB



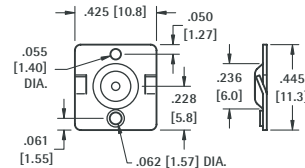
**CAT. NO. 5223**

#### (+) POSITIVE BUTTON



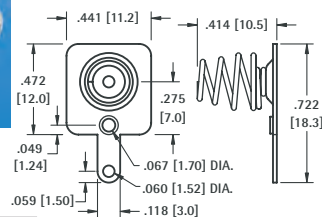
**CAT. NO. 5221**

#### (+) POSITIVE BUTTON



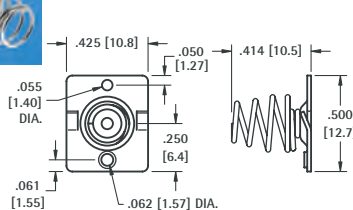
**CAT. NO. 5224**

#### (-) NEGATIVE SPRING WITH TAB



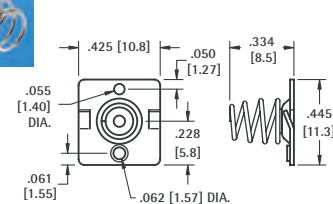
**CAT. NO. 5201**

#### (-) NEGATIVE SPRING



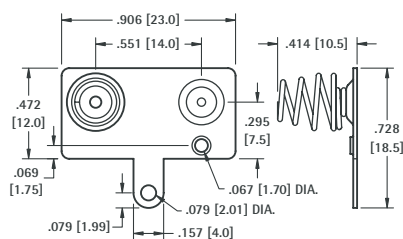
**CAT. NO. 5222**

#### (-) NEGATIVE SPRING



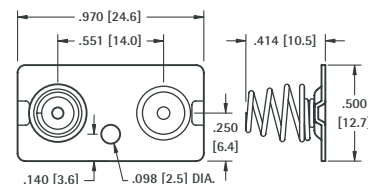
**CAT. NO. 5202**

#### DUAL CONTACTS WITH TAB



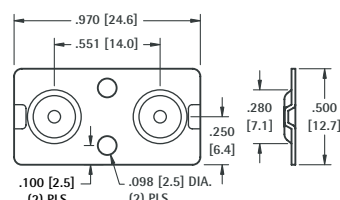
**CAT. NO. 5211**

#### DUAL CONTACTS



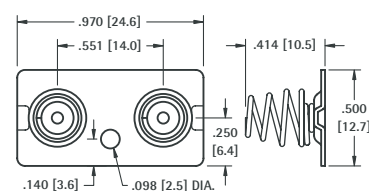
**CAT. NO. 5212**

#### DUAL BUTTON CONTACT



**CAT. NO. 5227**

#### DUAL SPRING CONTACT



**CAT. NO. 5228**

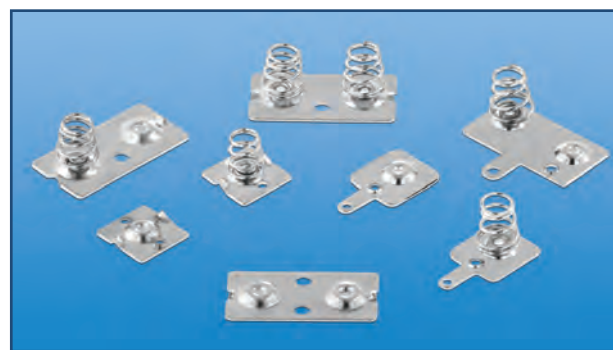
## SPRING & BUTTON CONTACTS

### For "A" - "AA"

- Economical and reliable contacts are ideal for molded cases with self contained battery compartments
- Single and dual contact designs available for "A" & "AA" size batteries
- "Solder tab" design for either wire lead or PC mounting
- Unique spring contacts adjust to variations in battery lengths
- Reliable spring contacts assure low contact resistance and a dependable connection
- Space saving, economical, excellent mechanical construction

#### MATERIAL:

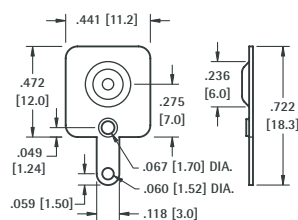
**Plate:** .020 (.51) thick Steel, Nickel Plate **Spring:** Spring Steel, Nickel Plate



Refer to page 27 for Battery Contact Layout & Mounting Details

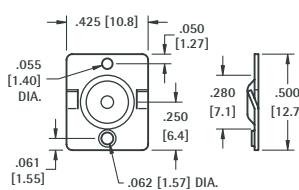
### For "A" - "AA"

#### (+) POSITIVE BUTTON WITH TAB



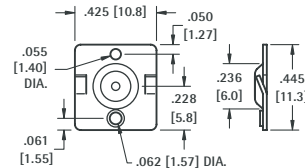
**CAT. NO. 5223**

#### (+) POSITIVE BUTTON



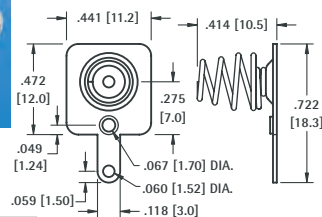
**CAT. NO. 5221**

#### (+) POSITIVE BUTTON



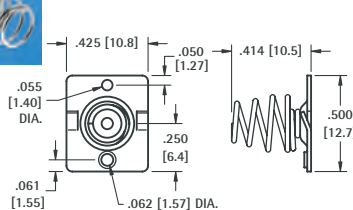
**CAT. NO. 5224**

#### (-) NEGATIVE SPRING WITH TAB



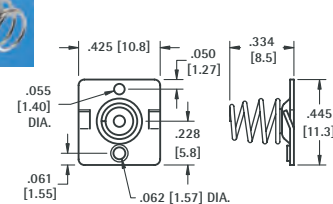
**CAT. NO. 5201**

#### (-) NEGATIVE SPRING



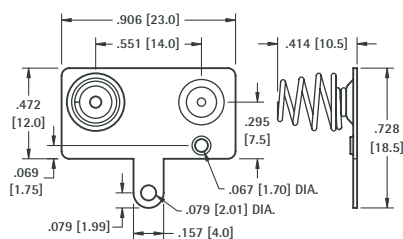
**CAT. NO. 5222**

#### (-) NEGATIVE SPRING



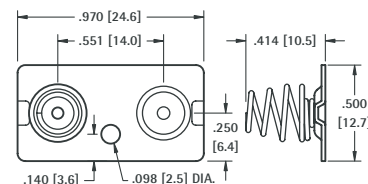
**CAT. NO. 5202**

#### DUAL CONTACTS WITH TAB



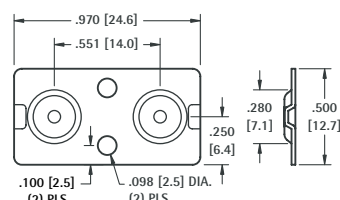
**CAT. NO. 5211**

#### DUAL CONTACTS



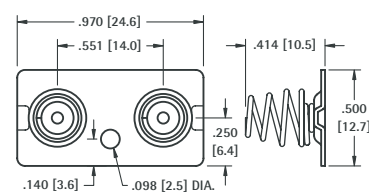
**CAT. NO. 5212**

#### DUAL BUTTON CONTACT



**CAT. NO. 5227**

#### DUAL SPRING CONTACT



**CAT. NO. 5228**