
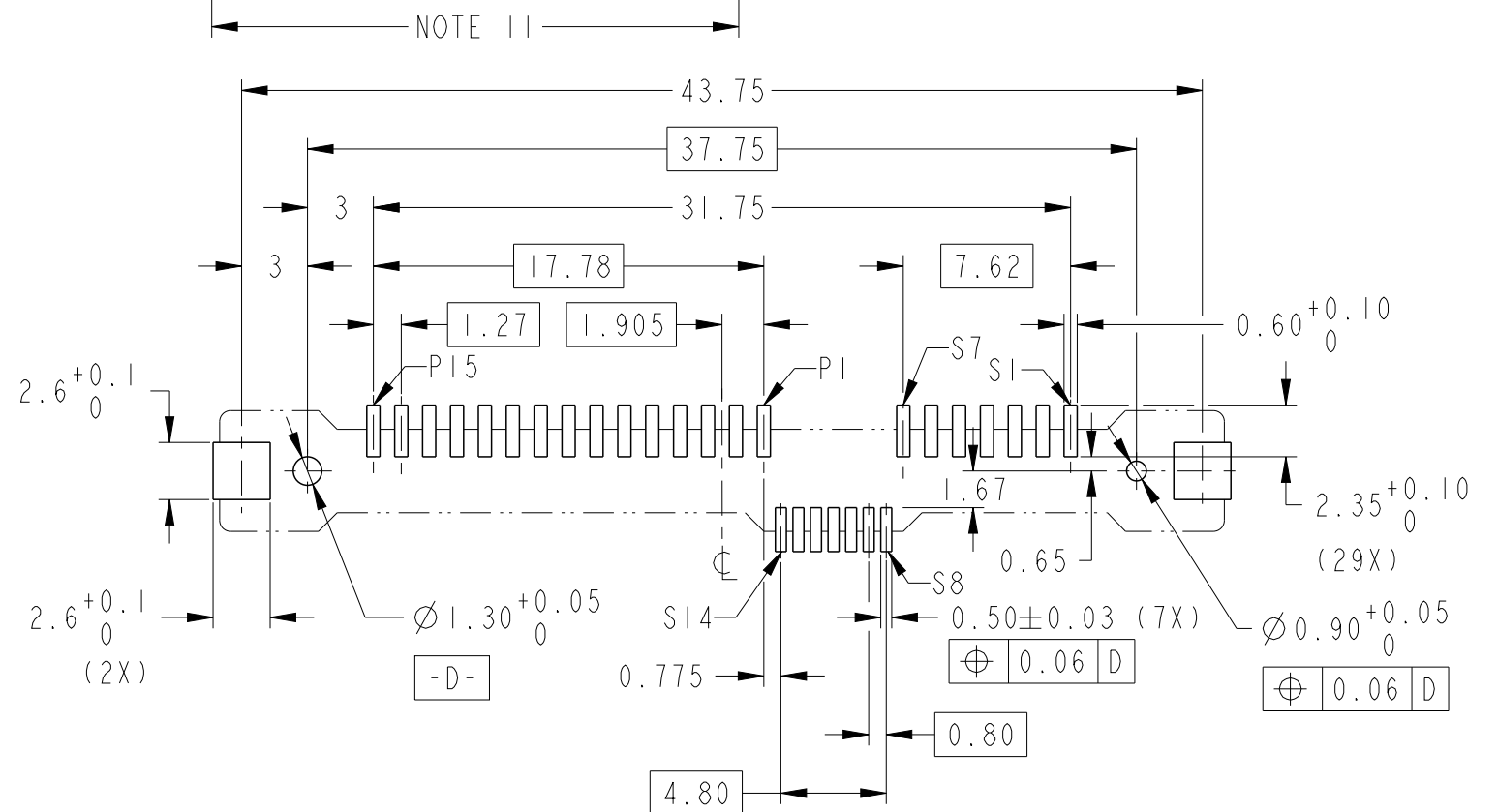


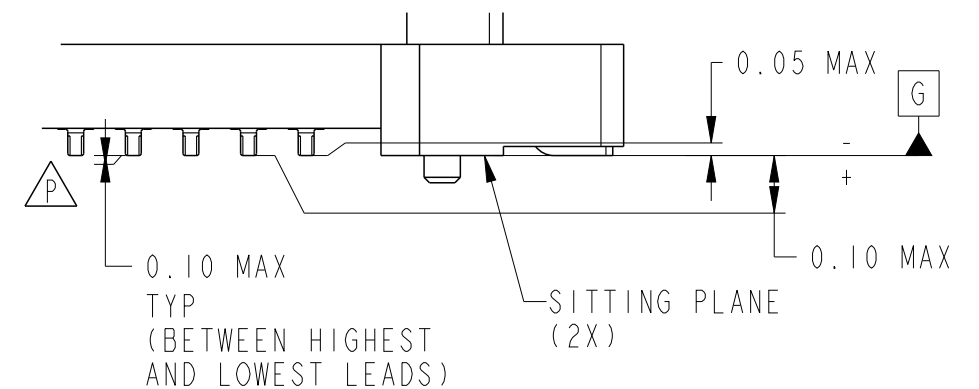
PRODUCT NO	METAL CLIP	PLATING	PICK-UP CAP	PACKAGING	REMARKS	PRODUCT NO	PLATNG
10031567-001LF	2 PCS	NOTE 2	NO	TRAY	NOTE ⑧	10031567-401LF	NOTE ⑪
10031567-001CLF			YES		NOTE ④ & ⑧	10031567-401CLF	
10031567-001C-TRLF			YES	TAPE & REEL	NOTE ④ ⑥ & ⑧	10031567-401C-TRLF	

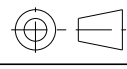

NOTES:

- MATERIAL :
 - HOUSING : HIGH TEMP THERMOPLASTIC, UL 94V-0
COLOR : BLACK
 - TERMINAL : COPPER ALLOY
 - HOLD DOWN : COPPER ALLOY
- FINISH :
 - TERMINAL : 30μ " Au PLATING (CONTACT POINT) OVER 50μ " NICKEL
 - SOLDER TAIL : 100μ " MIN Sn OVER 50μ " NICKEL
 - HOLD DOWN : 100μ " MIN Sn OVER 50μ " NICKEL
- PER SFF REV 1.1, EXCEPT 0.8mm PITCH BUMP AREA.
- PART WITH PICK-UP CAP, P/N XXXXXXXX-XXXC LF.
- THE STD PACKAGING IS IN TRAY UNLESS OTHERWISE SPECIFIED.
- PART NUMBER WITH SUFFIX "-TR" MEANS FOR TAPE & REEL PACKAGING (E.G. P/N: XXXXXXXX-XXXC-TRLF).
- THE HOUSING WILL WITHSTAND EXPOSURE TO 260°C PEAK TEMPERATURE FOR 10 SECONDS IN A CONVECTION, INFRA-RED OR VAPOR PHASE REFLOW OVEN.
- THIS PRODUCT MEETS EUROPEAN UNION DIRECTIVES AND OTHER COUNTRY REGULATIONS AS DESCRIBED IN GS-22-008.
- PART NUMBERS ENDING IN "LF" MEANS FOR NOTE 8 LEAD FREE IDENTIFICATION
 - XXXXXXXX-XXXLF IS EQUIVALENT TO PREVIOUS P/N XXXXXXXX-XXX
 - XXXXXXXX-XXXCLF IS EQUIVALENT TO P/N XXXXXXXX-XXXC
 - XXXXXXXX-XXXC-TRLF IS EQUIVALENT TO P/N XXXXXXXX-XXXC-TR
- A  SYMBOL WILL BE NEXT TO ANY DIMENSION, VIEW, OR NOTE WHICH HAS BEEN MODIFIED WITH THE CURRENT DRAWING REVISION.
- FINISH :
 - TERMINAL : 15μ " GXT PLATING (CONTACT POINT) OVER 50μ " NICKEL
 - SOLDER TAIL : 100μ " MIN Sn OVER 50μ " NICKEL
 - HOLD DOWN : 100μ " MIN Sn OVER 50μ " NICKEL



RECOMMENDED PCB LAYOUT

DETAIL 2
SCALE 6:1

spec ref		-		dr	Louis Ng	2011/10/03	projection			MM	size	A3	scale	1:1
tolerance std	TOLERANCES UNLESS OTHERWISE SPECIFIED			eng	Noorhazinda	2017/04/21				ecn no	ELX-M-26756-1			
				chr	-	-								
ISO 406				appr	Koon-Poh Tay	2017/05/17	product family				-	rel level	Released	
ISO 1101														
surface	linear	0.X	±-	Amphenol FCi	title	SAS RECEPTACLE VERTICAL SMT TYPE ASSY				dwg no	10031567		rev	P
		0.XX	±0.20											
		0.XXX	±-											
	angular	0°	±2°											
ISO 1302						cat. no.	-	Product - Customer Drw				sheet 2 of 3		

A

B

C

D

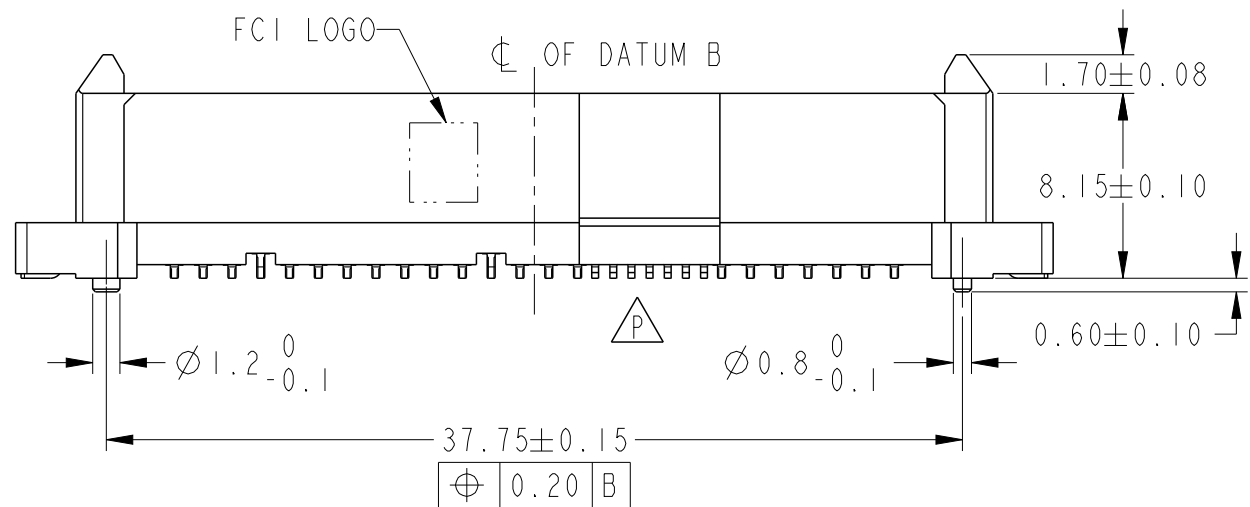
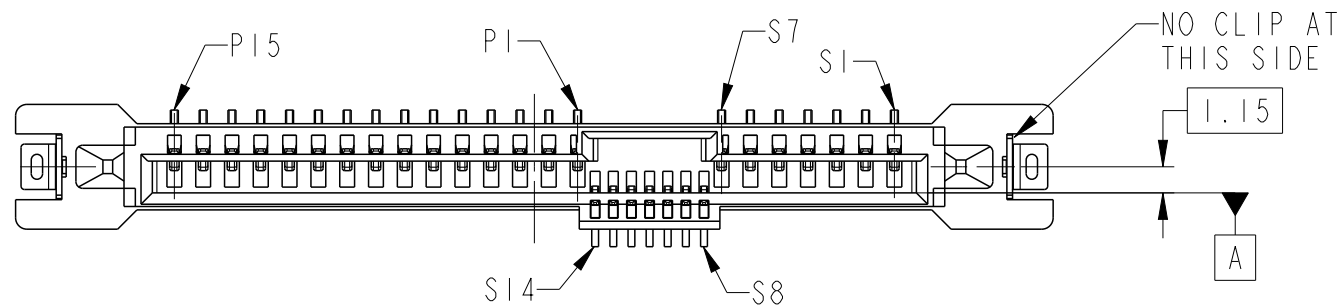
A

B

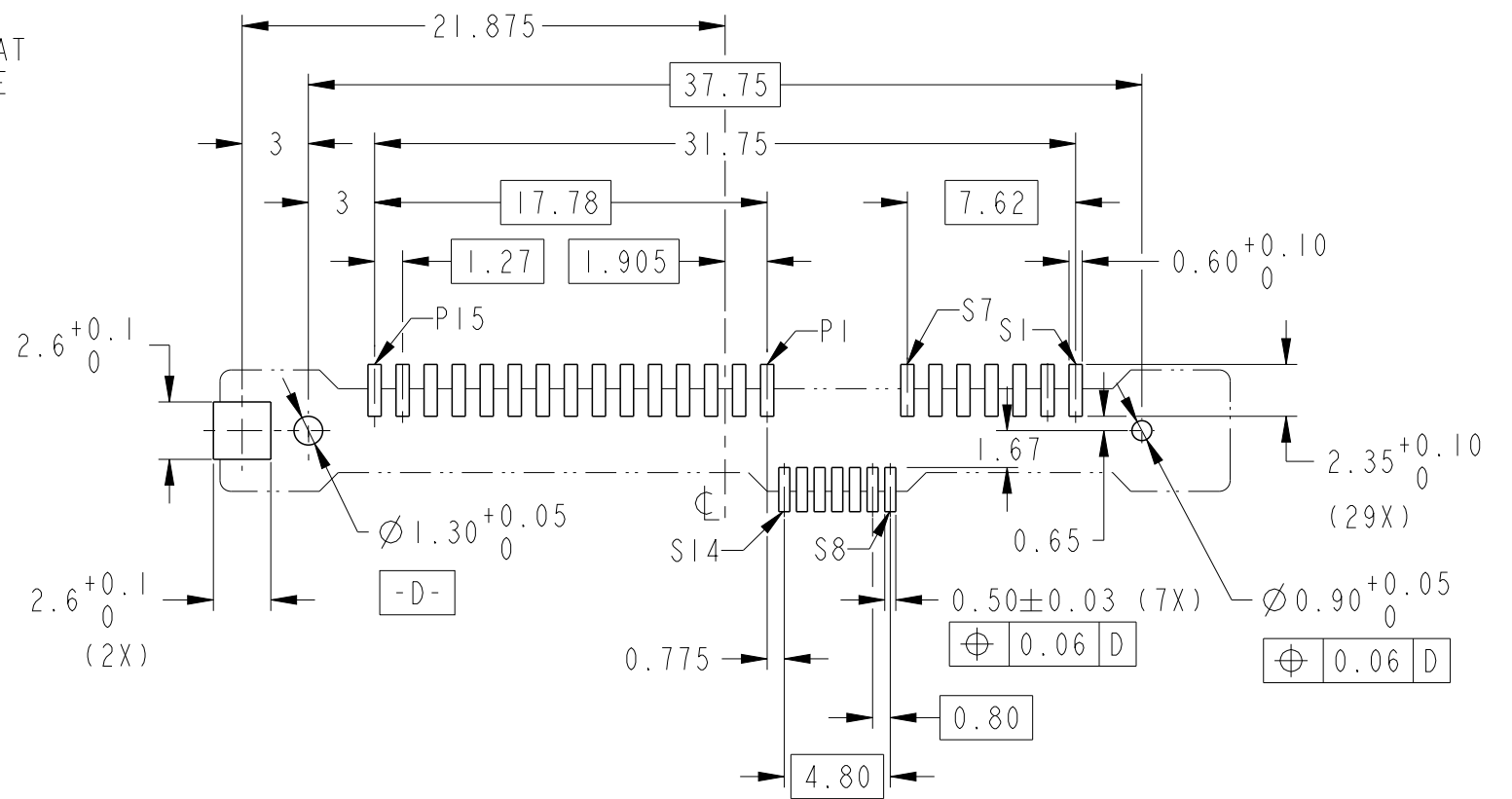
C

D



PRODUCT NO	METAL CLIP	PLATING	PICK-UP CAP	PACKAGING	REMARKS	PRODUCT NO	PLATNG	
10031567-002LF	1 PC	NOTE 2	NO	TRAY	NOTE ⑧	10031567-402LF	NOTE ⑪	
10031567-002CLF			YES		NOTE ④ & ⑧	10031567-402CLF		
10031567-002C-TRLF			YES	TAPE & REEL	NOTE ④ ⑥ & ⑧	10031567-402C-TRLF		
						← NOTE 11 →		
PRODUCT NO	METAL CLIP	PLATING	PICK-UP CAP	PACKAGING	REMARKS			
10031567-404C-TRLF	1 PC	NOTE 11	YES	CUSTOM-MADE TAPE & REEL	NOTE ④ ⑥ & ⑧			



ALL OTHER DIMENSIONS, REFER TO SHEET 1.



RECOMMENDED PCB LAYOUT

spec ref -				dr	Louis Ng	2011/10/03	projection 	MM 	size	A3	scale	1:1
tolerance std ISO 406 ISO 1101	TOLERANCES UNLESS OTHERWISE SPECIFIED			eng	Noorhazelinda	2017/04/21			ecn no	ELX-M-26756-1		
				chr	-	-			rel level			Released
				appr	Koon-Poh Tay	2017/05/17			product family			-
surface ISO 1302	linear	0.X	± -	Amphenol FCi	title	SAS RECEPTACLE VERTICAL SMT TYPE ASSY			dwg no	10031567		rev P
		0.XX	±0.20									
		0.XXX	± -									
	angular	0°	±2°	cat. no.								