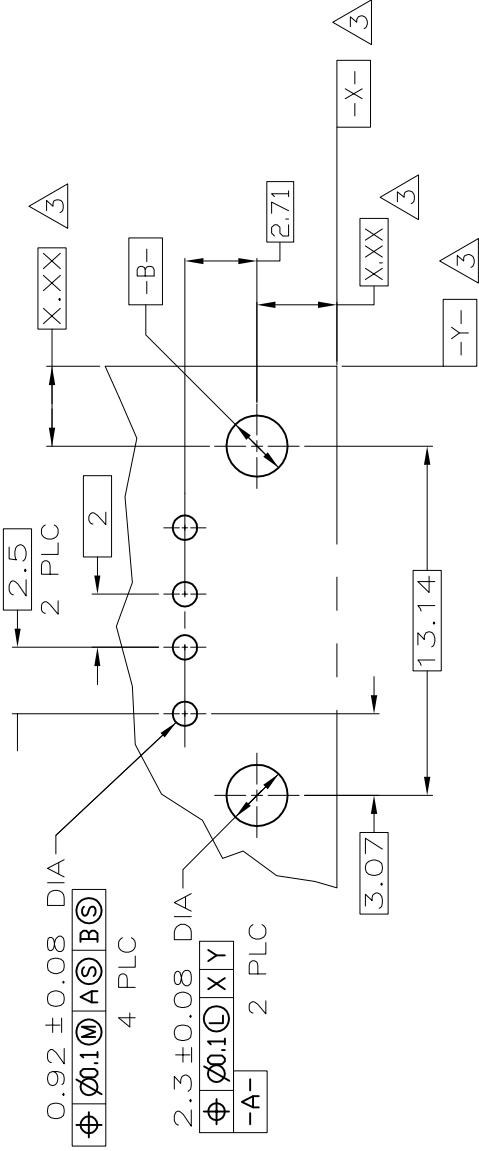
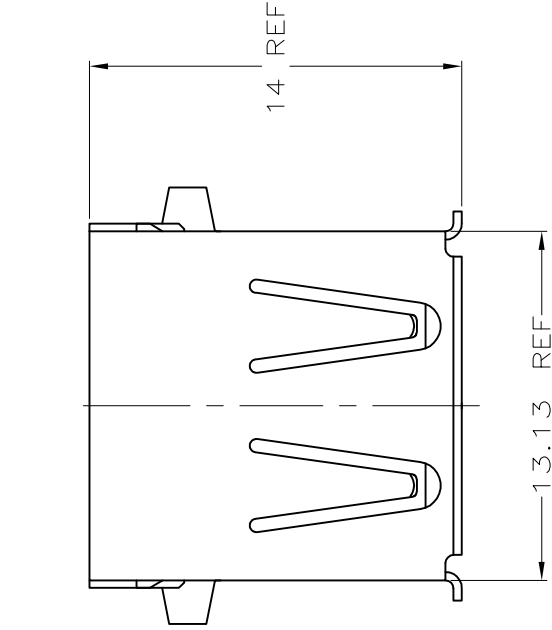


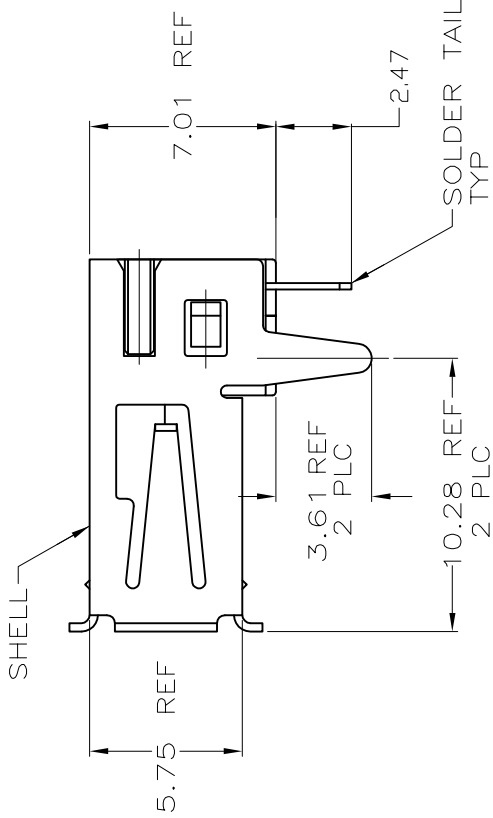
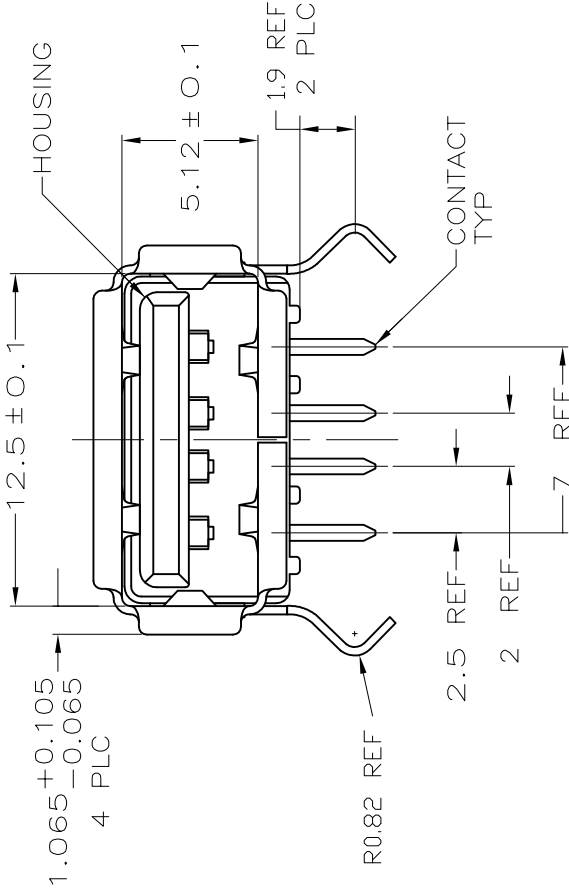
LOC	DIST	REVISIONS		
ES	00	P	LTR	DATE
		-		SEE SHEET 1
		-		-
		-		-

D



PC BOARD MOUNTING DIMENSIONS

C



B

292303

B

- MATERIAL:
- SHELL- STAINLESS STEEL.
 - CONTACTS- COPPER ALLOY.
 - HOUSING: UL 94V-0 RATED, THERMOPLASTIC, COLOR SEE TABLE.
- PLATING:
- CONTACTS: 0.076 μ m MINIMUM GOLD OVER 0.76 μ m MINIMUM PALLADIUM-NICKEL ON MATING AREA.
 - 3.8 μ m MINIMUM MATTE TIN ON SOLDER TAILS.
 - BOTH OVER 1.27 μ m MINIMUM NICKEL.
 - CONTACT ALTERNATE PLATING: 0.76 μ m MIN GOLD ON MATING AREA, 3.80 μ m MIN MATTE TIN ON SOLDER TAILS, BOTH OVER 1.27 μ m MIN NICKEL.
 - SHELL: 2~5 μ m MINIMUM BRIGHT TIN
- DATUM AND BASIC DIMENSIONS ESTABLISHED BY CUSTOMER.
- RECOMMENDED PC BOARD THICKNESS OF 1.2.

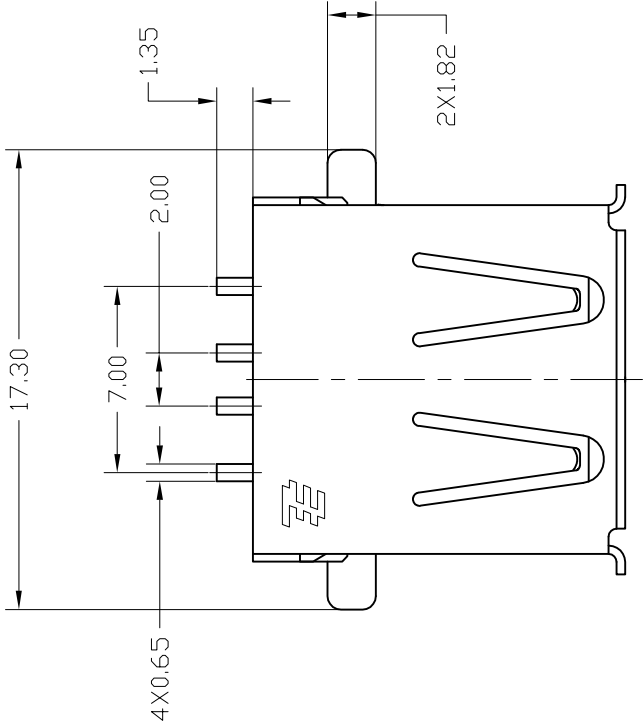
NO	NATURAL	292303-8
HIGH TEMPERATURE COMPATIBLE	HOUSING COLOR	PART NUMBER

THIS DRAWING IS A CONTROLLED DOCUMENT.		TE Connectivity	
DWN	19FEB04	J.JIANG	19FEB04
CHK	19FEB04	S.YAO	19FEB04
APVD	19FEB04	T.SASAKI	19FEB04
PRODUCT SPEC	108-60034	APPLICATION SPEC	108-60034
SIZE	A2	DRAWING NO	00779
RESTRICTED TO	-	SCALE	5:1
WEIGHT	-	SHEET	3 of 4
CUSTOMER DRAWING	-	REV	E-14

A

LOC		DIST	REVISIONS		
ES		00	P	LTR	DATE
			-		SEE SHEET 1
			-		-
			-		-

D



△ MATERIAL:

① SHELL- STAINLESS STEEL.
CONTACTS- COPPER ALLOY.

HOUSING: UL 94V-0 RATED, THERMOPLASTIC, COLOR SEE TABLE.

△ PLATING:

CONTACTS: 0.076 μm MINIMUM GOLD OVER 0.76 μm MINIMUM
PALLADIUM-NICKEL ON MATING AREA.

3.8 μm MINIMUM MATTE TIN ON SOLDER TAILS.

BOTH OVER 1.27 μm MINIMUM NICKEL.

CONTACT ALTERNATE PLATING: 0.76 μm MIN GOLD ON MATING

AREA, 3.80 μm MIN MATTE TIN ON SOLDER TAILS, BOTH

OVER 1.27 μm MIN NICKEL.

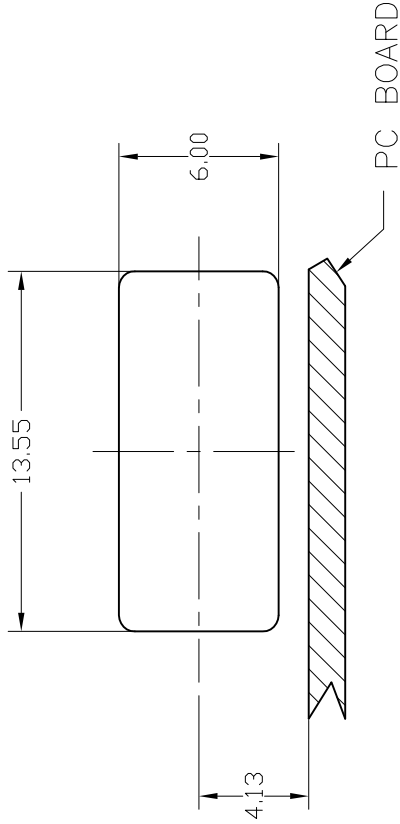
SHELL: 2~5 μm MINIMUM BRIGHT TIN

△ PANEL IS NEEDED FOR CUSTOMER.

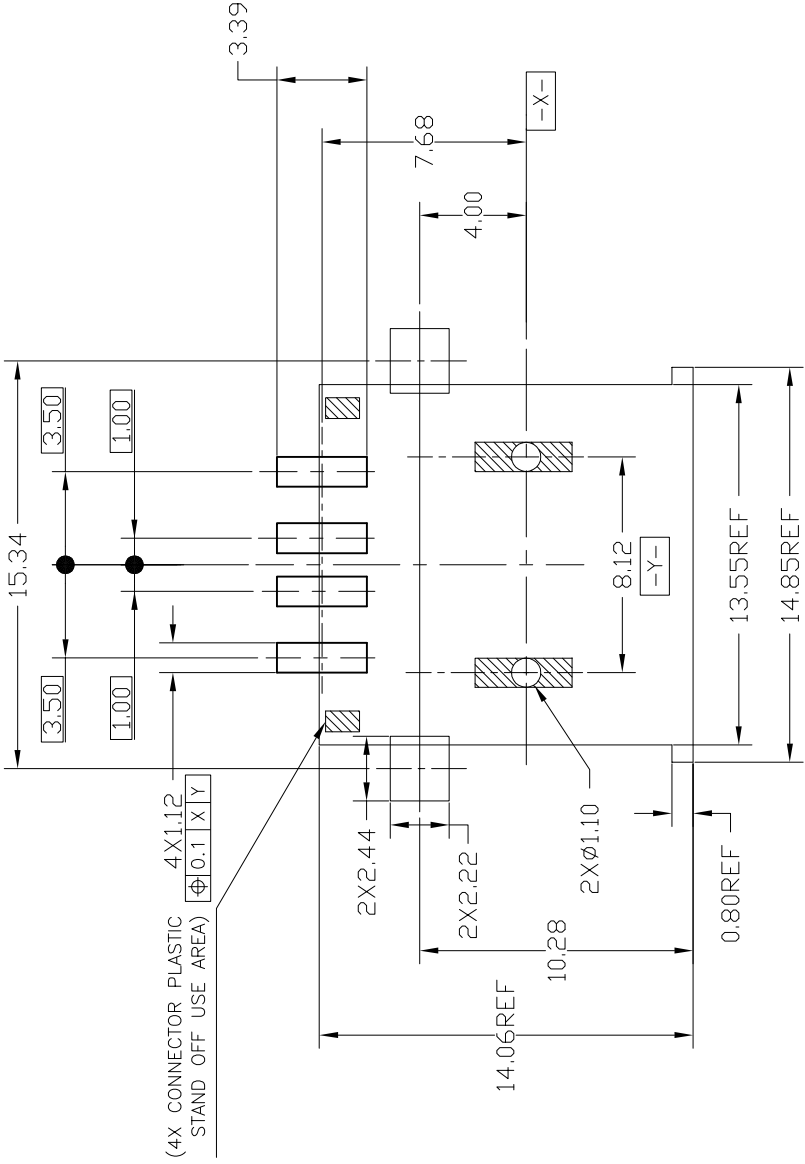
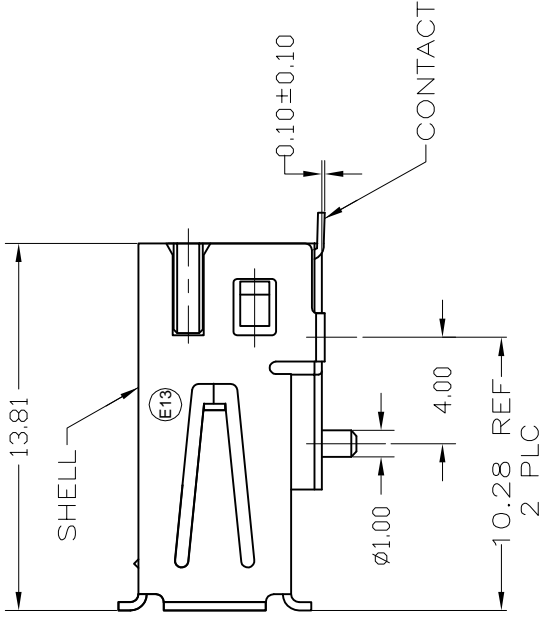
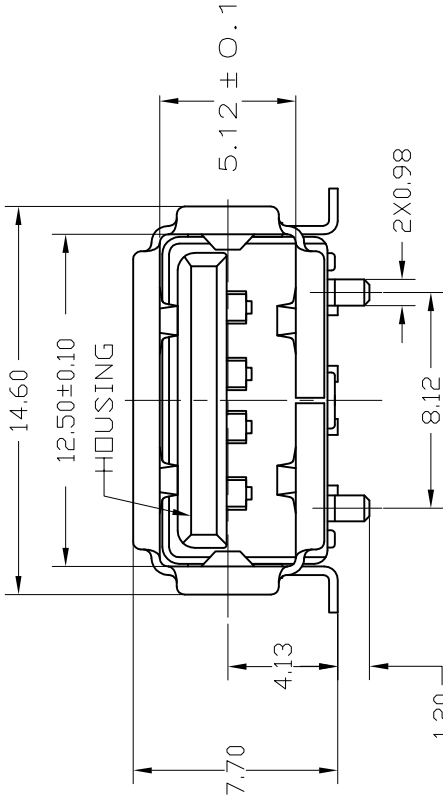
△ THIS P/N IS PRELIMINARY.

C

RECOMMENDED MOUNTING PANEL CUTOUT



B



292303

B

RECOMMENDED PC BOARD MOUNTING LAYOUT (TOLERANCE=±0.05)

A

THIS DRAWING IS A CONTROLLED DOCUMENT.			DWN	J.JIANG	19FEB04	TE Connectivity		
			CHK	S.YAO	19FEB04			
			APVD	T.SASAKI	19FEB04	NAME		
DIMENSIONS:			TOLERANCES, UNLESS OTHERWISE SPECIFIED:			RECEPTACLE ASSEMBLY RIGHT		
mm			0 PLC ±			ANGLE, 4 POSITION, T/H & SMT		
			1 PLC ±			USB, LEAD FREE VERSION		
			2 PLC ± 0.25					
			3 PLC ±					
			4 PLC ±					
			ANGLES ±					
MATERIAL			FINISH					
			WEIGHT			RESTRICTED TO		
			—			SIZE		
			—			CAGE CODE		
			—			DRAWING NO		
			—			A2		
			—			00779		
			—			C=292303		
			CUSTOMER DRAWING			SCALE		
			5:1			SHEET		
			4			OF 4		
			REV			E14		

YES	BLACK	1-292303-6	△
YES	NATURAL	292303-9	
HIGH TEMPERATURE COMPATIBLE	HOUSING COLOR	PART NUMBER	