

16TTS..PbF High Voltage Series

Vishay High Power Products Phase Control SCR, 10 A



ABSOLUTE MAXIMUM RATINGS						
PARAMETER	SYMBOL	TEST CONDITIONS		VALUES		UNITS
				TYP.	MAX.	
Maximum average on-state current	I _{T(AV)}	T _C = 98 °C, 180° conduction, half sine wave		10		A
Maximum RMS on-state current	I _{RMS}			16		
Maximum peak, one-cycle, non-repetitive surge current	I _{TSM}	10 ms sine pulse, rated V _{RRM} applied		170		
		10 ms sine pulse, no voltage reapplied		200		
Maximum I ² t for fusing	I ² t	10 ms sine pulse, rated V _{RRM} applied		144		A ² s
		10 ms sine pulse, no voltage reapplied		200		
Maximum I ² √t for fusing	I ² √t	t = 0.1 to 10 ms, no voltage reapplied		2000		A ² √s
Maximum on-state voltage drop	V _{TM}	10 A, T _J = 25 °C		1.4		V
On-state slope resistance	r _t	T _J = 125 °C		24.0		mΩ
Threshold voltage	V _{T(TO)}			1.1		V
Maximum reverse and direct leakage current	I _{RM} /I _{DM}	T _J = 25 °C	V _R = Rated V _{RRM} /V _{DRM}	0.5		mA
		T _J = 125 °C		10		
Holding current	I _H	Anode supply = 6 V, resistive load, initial I _T = 1 A 16TTS08PbF, 16TTS12PbF		-	100	
Maximum latching current	I _L	Anode supply = 6 V, resistive load		200		
Maximum rate of rise of off-state voltage	dV/dt			500		V/μs
Maximum rate of rise of turned-on current	dI/dt			150		A/μs

TRIGGERING				
PARAMETER	SYMBOL	TEST CONDITIONS	VALUES	UNITS
Maximum peak gate power	P_{GM}		8.0	W
Maximum average gate power	$P_{G(AV)}$		2.0	
Maximum peak positive gate current	$+I_{GM}$		1.5	A
Maximum peak negative gate voltage	$-V_{GM}$		10	V
Maximum required DC gate current to trigger	I_{GT}	Anode supply = 6 V, resistive load, $T_J = -65\text{ }^{\circ}\text{C}$	90	mA
		Anode supply = 6 V, resistive load, $T_J = 25\text{ }^{\circ}\text{C}$	60	
		Anode supply = 6 V, resistive load, $T_J = 125\text{ }^{\circ}\text{C}$	35	
Maximum required DC gate voltage to trigger	V_{GT}	Anode supply = 6 V, resistive load, $T_J = -65\text{ }^{\circ}\text{C}$	3.0	V
		Anode supply = 6 V, resistive load, $T_J = 25\text{ }^{\circ}\text{C}$	2.0	
		Anode supply = 6 V, resistive load, $T_J = 125\text{ }^{\circ}\text{C}$	1.0	
Maximum DC gate voltage not to trigger	V_{GD}	$T_J = 125\text{ }^{\circ}\text{C}$, $V_{DRM} = \text{Rated value}$	0.2	mA
Maximum DC gate current not to trigger	I_{GD}		2.0	

SWITCHING				
PARAMETER	SYMBOL	TEST CONDITIONS	VALUES	UNITS
Typical turn-on time	t_{gt}	$T_J = 25\text{ }^{\circ}\text{C}$	0.9	μs
Typical reverse recovery time	t_{rr}	$T_J = 125\text{ }^{\circ}\text{C}$	4	
Typical turn-off time	t_q		110	



16TTS..PbF High Voltage Series

Phase Control SCR, 10 A Vishay High Power Products

THERMAL AND MECHANICAL SPECIFICATIONS				
PARAMETER	SYMBOL	TEST CONDITIONS	VALUES	UNITS
Maximum junction and storage temperature range	T _J , T _{Stg}		- 40 to 125	°C
Maximum thermal resistance, junction to case	R _{thJC}	DC operation	1.3	°C/W
Maximum thermal resistance, junction to ambient	R _{thJA}		62	
Typical thermal resistance, case to heatsink	R _{thCS}	Mounting surface, smooth and greased	0.5	
Approximate weight			2	g
			0.07	oz.
Mounting torque	minimum		6 (5)	kgf · cm (lbf · in)
	maximum		12 (10)	
Marking device		Case style TO-220AB	16TTS08	
			16TTS12	

16TTS..PbF High Voltage Series

Vishay High Power Products Phase Control SCR, 10 A

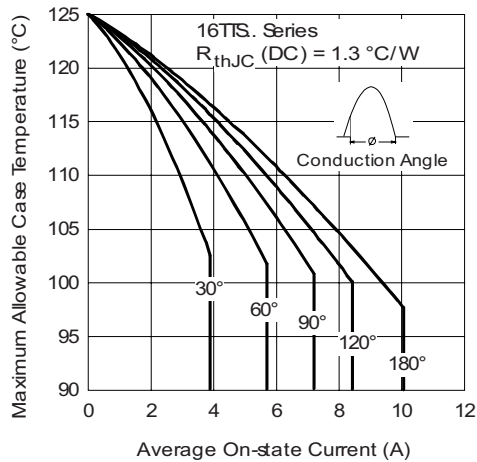


Fig. 1 - Current Rating Characteristics

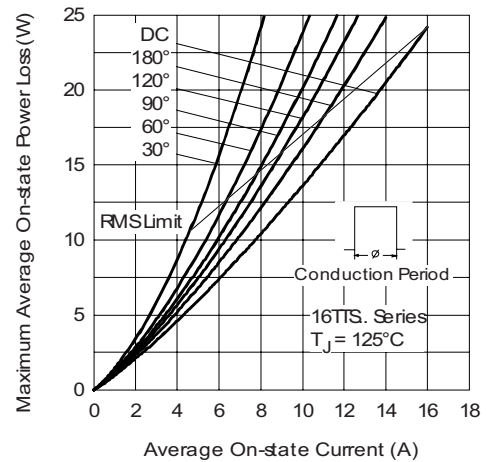


Fig. 4 - On-State Power Loss Characteristics

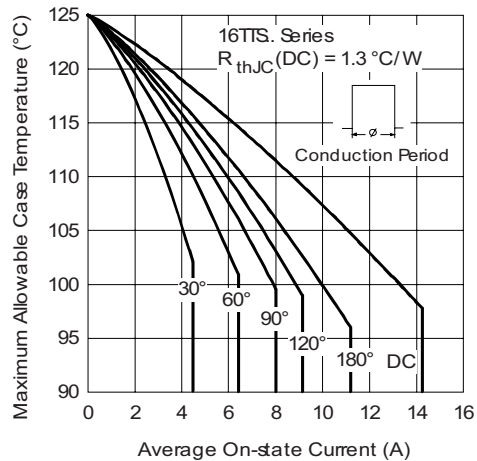


Fig. 2 - Current Rating Characteristics

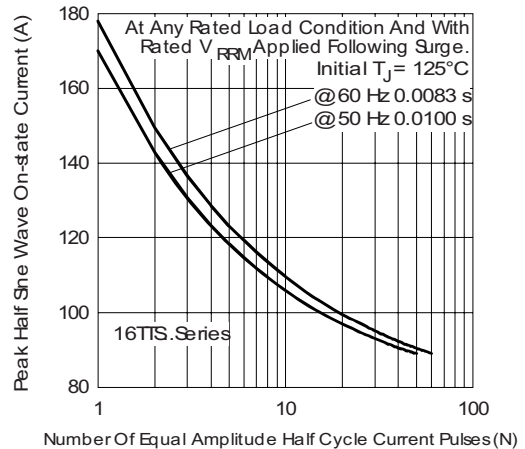


Fig. 5 - Maximum Non-Repetitive Surge Current

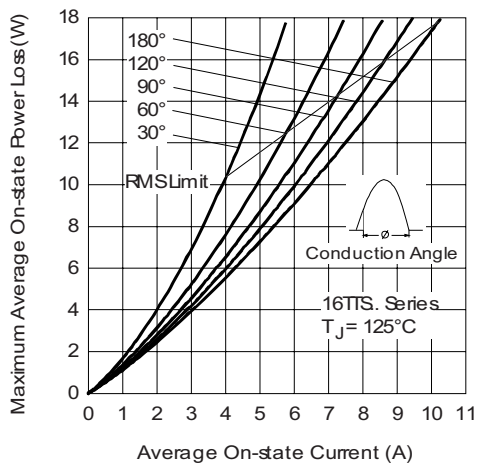


Fig. 3 - On-State Power Loss Characteristics

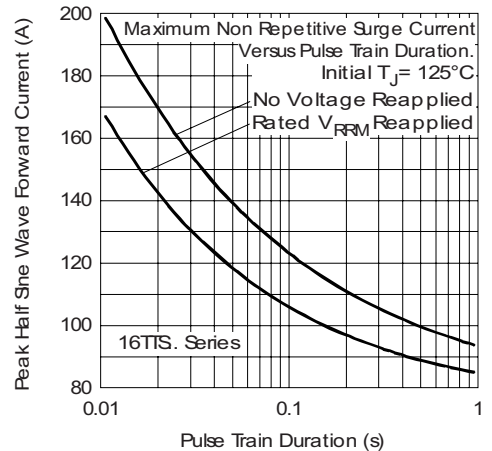


Fig. 6 - Maximum Non-Repetitive Surge Current

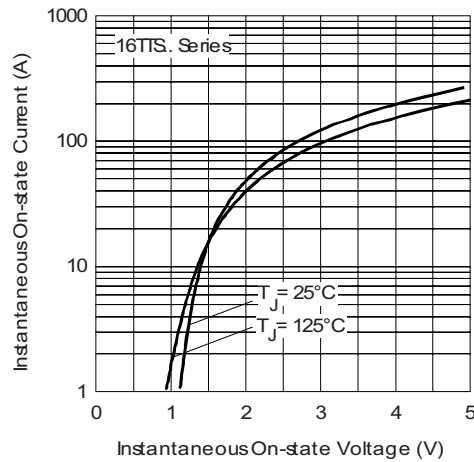


Fig. 7 - On-State Voltage Drop Characteristics

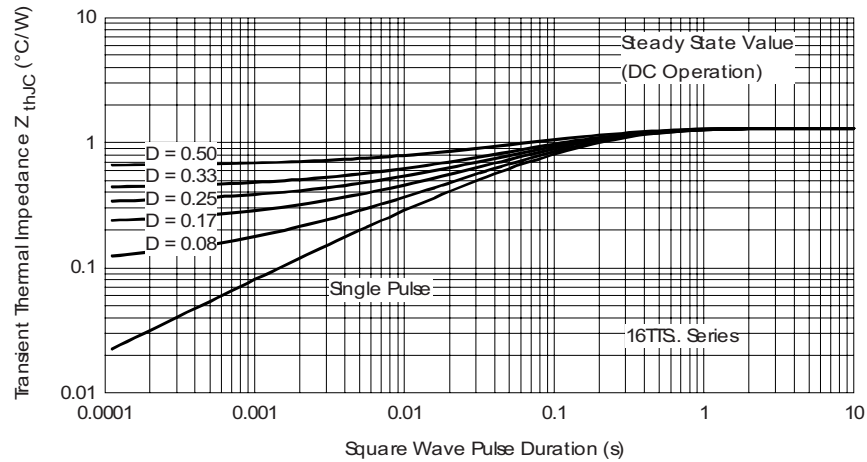


Fig. 8 - Thermal Impedance Z_{thJC} Characteristics

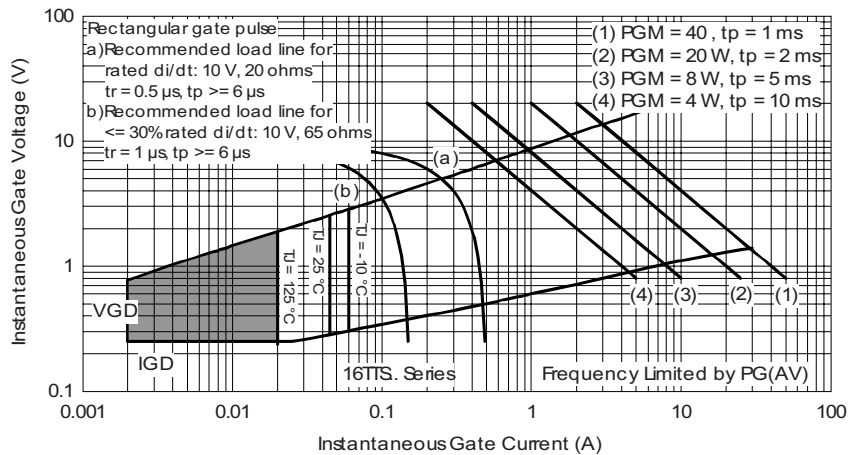


Fig. 9 - Gate Characteristics

16TTS..PbF High Voltage Series

Vishay High Power Products Phase Control SCR, 10 A



ORDERING INFORMATION TABLE

Device code	16	T	T	S	12	PbF
	1	2	3	4	5	6
	1	- Current rating				
	2	- Circuit configuration:				
		T = Single thyristor				
	3	- Package:				
		T = TO-220AB				
	4	- Type of silicon:				
		S = Converter grade				
	5	- Voltage code x 100 = V_{RRM}				
	6	- • None = Standard production				
		• PbF = Lead (Pb)-free				

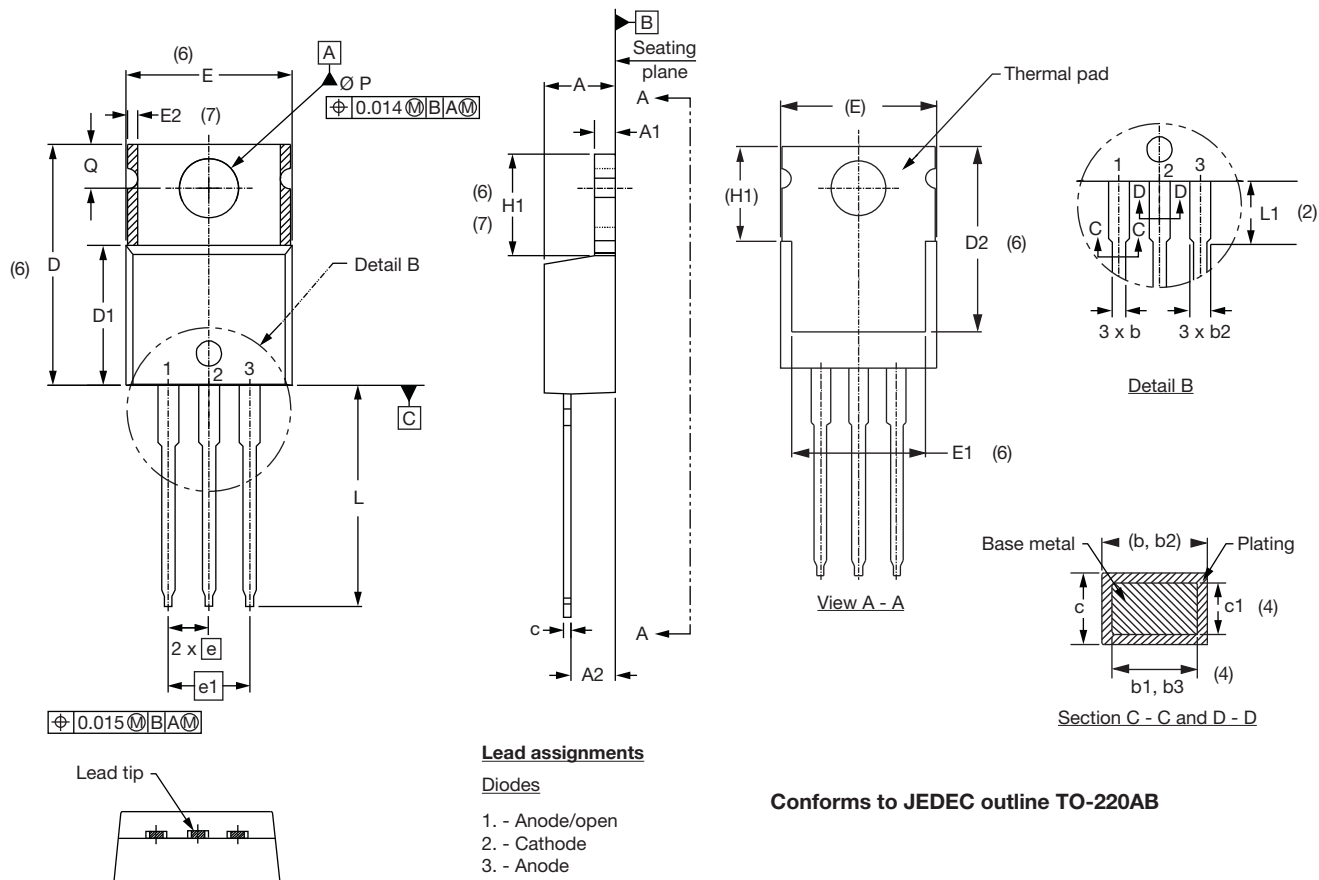
08 = 800 V
12 = 1200 V

Note: For higher voltage up to 1600 V contact factory

LINKS TO RELATED DOCUMENTS	
Dimensions	http://www.vishay.com/doc?95222
Part marking information	http://www.vishay.com/doc?95225

TO-220AB

DIMENSIONS in millimeters and inches



SYMBOL	MILLIMETERS		INCHES		NOTES
	MIN.	MAX.	MIN.	MAX.	
A	4.25	4.65	0.167	0.183	
A1	1.14	1.40	0.045	0.055	
A2	2.56	2.92	0.101	0.115	
b	0.69	1.01	0.027	0.040	
b1	0.38	0.97	0.015	0.038	4
b2	1.20	1.73	0.047	0.068	
b3	1.14	1.73	0.045	0.068	4
c	0.36	0.61	0.014	0.024	
c1	0.36	0.56	0.014	0.022	4
D	14.85	15.25	0.585	0.600	3
D1	8.38	9.02	0.330	0.355	
D2	11.68	12.88	0.460	0.507	6

SYMBOL	MILLIMETERS		INCHES		NOTES
	MIN.	MAX.	MIN.	MAX.	
E	10.11	10.51	0.398	0.414	3, 6
E1	6.86	8.89	0.270	0.350	6
E2	-	0.76	-	0.030	7
e	2.41	2.67	0.095	0.105	
e1	4.88	5.28	0.192	0.208	
H1	6.09	6.48	0.240	0.255	6, 7
L	13.52	14.02	0.532	0.552	
L1	3.32	3.82	0.131	0.150	2
Ø P	3.54	3.73	0.139	0.147	
Q	2.60	3.00	0.102	0.118	
θ	90° to 93°		90° to 93°		

Notes

- (1) Dimensioning and tolerancing as per ASME Y14.5M-1994
- (2) Lead dimension and finish uncontrolled in L1
- (3) Dimension D, D1 and E do not include mold flash. Mold flash shall not exceed 0.127 mm (0.005") per side. These dimensions are measured at the outermost extremes of the plastic body
- (4) Dimension b1, b3 and c1 apply to base metal only
- (5) Controlling dimensions: inches
- (6) Thermal pad contour optional within dimensions E, H1, D2 and E1
- (7) Dimensions E2 x H1 define a zone where stamping and singulation irregularities are allowed
- (8) Outline conforms to JEDEC TO-220, except A2 (maximum) and D2 (minimum) where dimensions are derived from the actual package outline



Disclaimer

ALL PRODUCT, PRODUCT SPECIFICATIONS AND DATA ARE SUBJECT TO CHANGE WITHOUT NOTICE TO IMPROVE RELIABILITY, FUNCTION OR DESIGN OR OTHERWISE.

Vishay Intertechnology, Inc., its affiliates, agents, and employees, and all persons acting on its or their behalf (collectively, "Vishay"), disclaim any and all liability for any errors, inaccuracies or incompleteness contained in any datasheet or in any other disclosure relating to any product.

Vishay makes no warranty, representation or guarantee regarding the suitability of the products for any particular purpose or the continuing production of any product. To the maximum extent permitted by applicable law, Vishay disclaims (i) any and all liability arising out of the application or use of any product, (ii) any and all liability, including without limitation special, consequential or incidental damages, and (iii) any and all implied warranties, including warranties of fitness for particular purpose, non-infringement and merchantability.

Statements regarding the suitability of products for certain types of applications are based on Vishay's knowledge of typical requirements that are often placed on Vishay products in generic applications. Such statements are not binding statements about the suitability of products for a particular application. It is the customer's responsibility to validate that a particular product with the properties described in the product specification is suitable for use in a particular application. Parameters provided in datasheets and/or specifications may vary in different applications and performance may vary over time. All operating parameters, including typical parameters, must be validated for each customer application by the customer's technical experts. Product specifications do not expand or otherwise modify Vishay's terms and conditions of purchase, including but not limited to the warranty expressed therein.

Except as expressly indicated in writing, Vishay products are not designed for use in medical, life-saving, or life-sustaining applications or for any other application in which the failure of the Vishay product could result in personal injury or death. Customers using or selling Vishay products not expressly indicated for use in such applications do so at their own risk and agree to fully indemnify and hold Vishay and its distributors harmless from and against any and all claims, liabilities, expenses and damages arising or resulting in connection with such use or sale, including attorneys fees, even if such claim alleges that Vishay or its distributor was negligent regarding the design or manufacture of the part. Please contact authorized Vishay personnel to obtain written terms and conditions regarding products designed for such applications.

No license, express or implied, by estoppel or otherwise, to any intellectual property rights is granted by this document or by any conduct of Vishay. Product names and markings noted herein may be trademarks of their respective owners.