

switches to that one or you can 'select' from the menu which to display. It comes with a basic stand (shown) and there are four 'mounting thread' holes in the back in a 75mmx75mm square and you can use M4 screws to attach it to an enclosure. There's also a "Camera Mount" 1/4-20 hole in the bottom so you can attach it to a camera-ready mount.

[We also have a version with built in 3W speakers so you can do a full A/V setup check out that 7" display with speakers here.](#)

To demonstrate it, we took some photos with the display connected to a Raspberry Pi, but it will also work connected to any device with HDMI, VGA or NTSC/PAL output. It will not work with a device that only outputs DVI (without a DVI->HDMI converter) or SECAM.

For use with a Raspberry Pi we suggest editing **config.txt** as in the technical tab.

For use with a BeagleBone black, we found it works when plugged in, no configuration required. You may need a mouse/keyboard to keep the Bone display from going into 'sleep mode'

A 9V US-prong power adapter is included. The power supply may vary from the one shown in the photo, but it will definitely have a US 2-prong plug and will be a switching supply that can be used with 110-240VAC. We also powered it with 12V and it worked fine, and it might work at 5V.

TECHNICAL DETAILS

- Power with 5-24VDC
- 700mA power draw at 12V
- 16:10 display ratio
- Resolution: 1200 x 800
- Visible area: 150mm x 95mm 16:10
- Brightness: 400cd/m2
- Contrast: 800:1
- We opened up one of the displays and found [an HSD070PWW1 inside](#), we expect that all of TVs have this display or something similar
- Auto-detects between VGA, HDMI and Composite
- Display plastic case dimensions: 180mm x 130 x 30
- Weight (excluding power cable): 290g/10.2oz
- Not HDCP compatible - it cannot be used with 'secured' HDMI sources

[For more information on this HDMI display, including a suggested config.txt, check out our HDMI Display ÜBERGUIDE!](#)

LEARN



[Creepy Face Tracking Portrait](#)

Build a creepy Raspberry Pi-powered Halloween decoration that stares back at you!



[3D Printed Personal Monitor](#) [Game Controller Mount](#)

Make a personal gaming session without the big screen



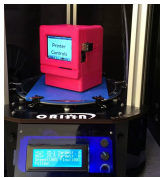
[The Adafruit HDMI Display Monitor ÜBERGUIDE](#)

Learn about our wide variety of HDMI/VGA/Composite Displays!



[OctoPrint - Open Source Host Software](#)

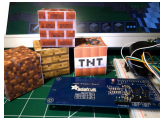
Put your printer on the network with open source host software on a Raspberry Pi



[AstroPrint 3D Printing](#)
Wireless 3D Printing for
Raspberry Pi



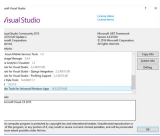
[Raspberry Pi Video Looper](#)
Turn a Raspberry Pi into a
dedicated 1080p video
playback tool for art
installations, digital signs, or
just playing cat videos!



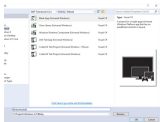
[Raspberry Pi NFC Minecraft
Blocks](#)
Make papercraft Minecraft
blocks that interact with the
world using near-field
communication!



[Processing on the Raspberry
Pi & PiTFT](#)
How to run a Processing
sketch on the Pi & PiTFT
display.

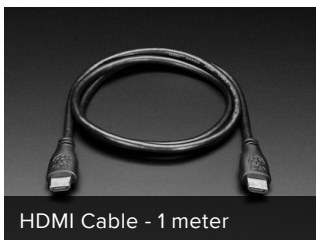


[Getting Started With Windows
IoT Core on Raspberry Pi](#)
How we got up to speed!

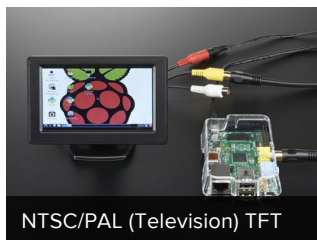


[Windows IoT Core
Application Development:
Headed Blinky](#)
Learn how to create an
Windows IoT Core Headed
Application

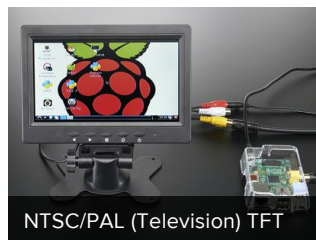
MAY WE ALSO SUGGEST...



HDMI Cable - 1 meter



NTSC/PAL (Television) TFT



NTSC/PAL (Television) TFT



HDMI to VGA Video Adapter



HDMI 7" 800x480 Display



HDMI 4 Pi: 7" Display no



TFP401 HDMI/DVI Decoder



Pimoroni Raspberry Pi 7"



SmartPi Touch Back Cover -



DISTRIBUTORS [EXPAND TO SEE DISTRIBUTORS](#)

- [CONTACT](#)
- [SUPPORT](#)
- [DISTRIBUTORS](#)
- [EDUCATORS](#)
- [JOBS](#)
- [FAQ](#)
- [SHIPPING & RETURNS](#)
- [TERMS OF SERVICE](#)
- [PRIVACY & LEGAL](#)
- [ABOUT US](#)

ENGINEERED IN NYC Adafruit®

*"Seek freedom and become captive
of your desires. Seek discipline and
find your liberty" - Frank Herbert*



4.9 ★★★★★
Google
Customer Reviews