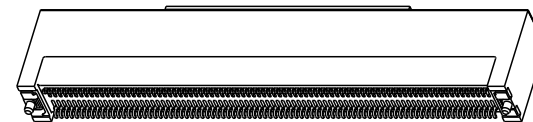
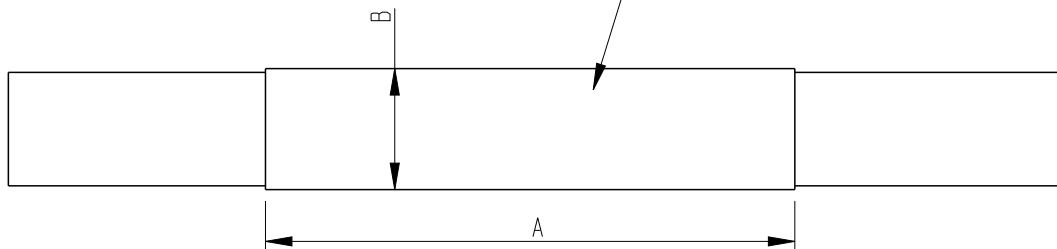


PART NUMBER	10058835-1001LF
	10058835-1003LF

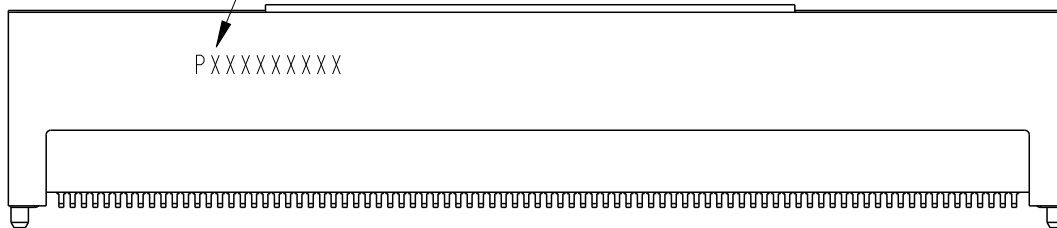


MYLAR FOR PLACE AND PICK
THICKNESS 0.12MM

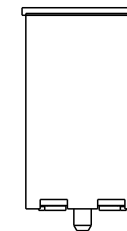


TRACEABLE MARKING
SEE NOTE 6

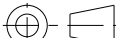


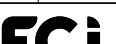
PXXXXXXXXX



PART NUMBER	DIM "A"±0.5	DIM "B"±0.3
10058835-1001LF	35	8.0
10058835-1003LF	22	7.0



NOTE: ALL THE CONNECTOR DIMENSIONS REFER TO PART NUMBER 10058835-1000LF

spec ref		*		dr		w wadmin		2006/08/30		projection				MM		size		A4		scale		1:1			
tolerance std		TOLERANCES UNLESS OTHERWISE SPECIFIED		eng		Wei Yang		2014/08/27				ecn no		ELX-DG-18450-1		rel level		Released							
ASME Y14.5				chr		Terry Qiu		2014/09/17																	
-				appr		Pei-Ming Zheng		2014/09/19																	
surface				linear		0.X		±0.3				title		SMT TYPE ASS'Y		MICRO TCA		dwg no		10058835		rev		H	
ASME Y14.5						0.XX		±0.20																	
						0.XXX		±0.100																	
angular				0°		±2°		www.fci.com		cat. no.		*		Product - Customer Drw		sheet 2 of 6									

PrintE File - REV C - 2009-06-09

PART NUMBER 10058835-1002LF

70.00


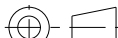



MYLAR FOR PLACE AND PICK
THICKNESS 0.12MM

TRACEABLE MARKING
SEE NOTE 6

PXXXXXXXXXX

SCALE 2:1

NOTE: ALL THE CONNECTOR DIMENSIONS REFER TO PART NUMBER 10058835-1000LF

spec ref		*		dr		w wcadmin	2006/08/30		projection				size		A4		scale		1:1				
tolerance std		TOLERANCES UNLESS OTHERWISE SPECIFIED		eng		Wei Yang		2014/08/27						ecn no		ELX-DG-18450-1		rel level		Released			
ASME Y14.5				chr		Terry Qiu		2014/09/17															
-				appr		Pei-Ming Zheng		2014/09/19															
surface				linear		0.X		±0.3				title		SMT TYPE ASS'Y		dwg no		10058835		rev		H	
ASME Y14.5						0.XX		±0.20															
						0.XXX		±0.100															
angular				0°		±2°		www.fci.com		cat. no.		*		Product - Customer Drw		sheet 3 of 6							



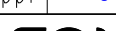
PrintE File - REV C - 2009-06-09

PDS: Rev :H

STATUS:Released

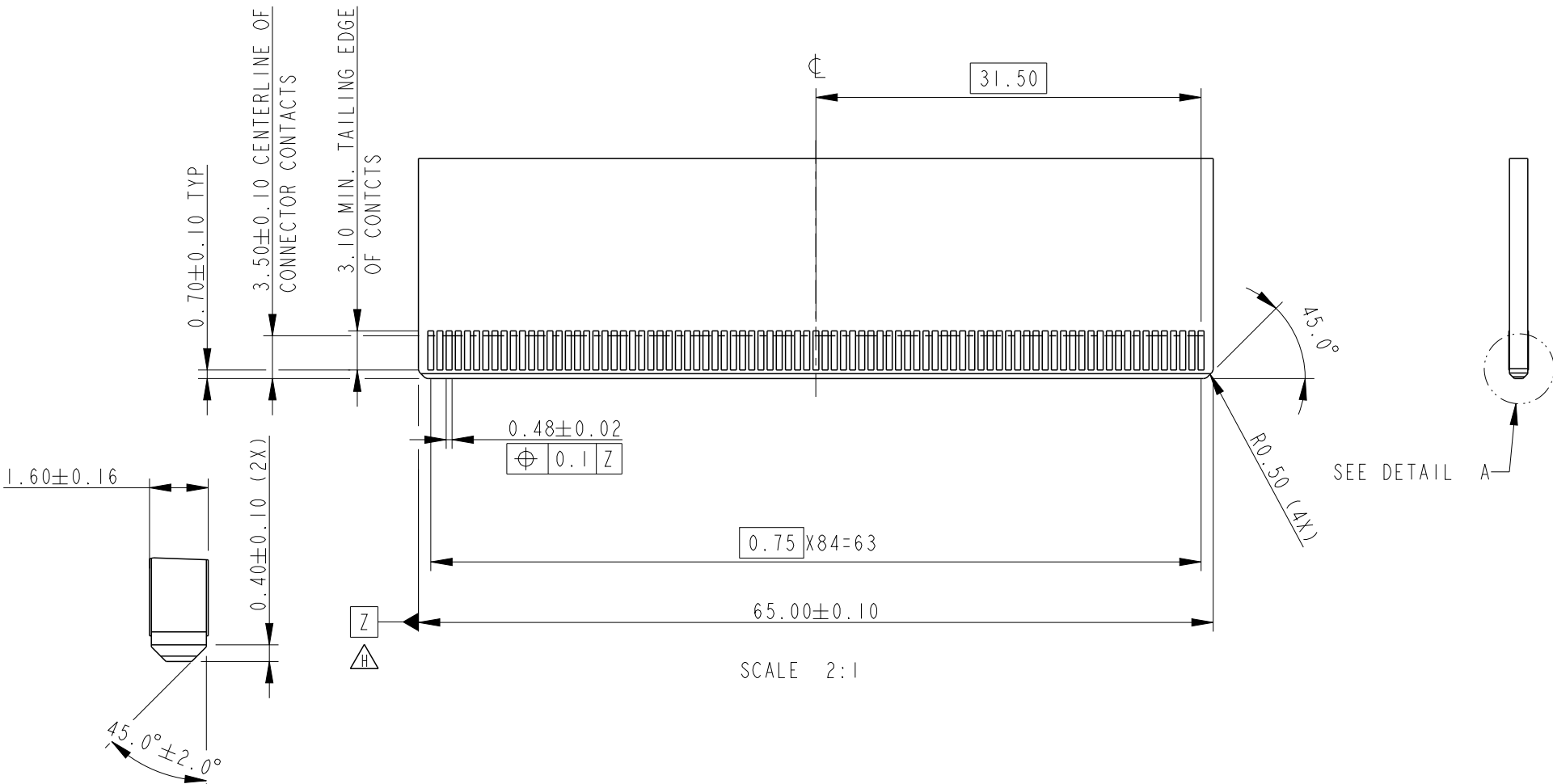
Printed: Sep 19, 2014



spec ref		*		dr		w wcadmin		2006/08/30		projection				MM		size		A4		scale		1:1	
tolerance std		ASME Y14.5		TOLERANCES UNLESS OTHERWISE SPECIFIED		eng		Wei Yang		2014/08/27				ecn no		ELX-DG-18450-1		rel level		Released			
chr		Terry Qiu		2014/09/17		appr		Pei-Ming Zheng		2014/09/19												product family	
surface		linear		0.X		±0.3				SMT TYPE ASS'Y		MICRO TCA		dwg no		10058835		rev		H			
		0.XX		±0.20																			
		0.XXX		±0.100																			
ASME Y14.5		angular		0°		±2°		www.fci.com		cat. no.		*		Product - Customer Drw		sheet 4 of 6							



Copyright FCI.



RECOMMENDED MODULE LAYOUT
(SEE PICMG ADVANCED MEZZANINE CRAD BASE SPECIFICATION FOR DETAIL)

spec ref		*		dr	w wadmin	2006/08/30	<div>projection</div> <div></div>	<div>MM</div> <div></div>	size	A4	scale	1:1				
tolerance std ASME Y14.5 -	TOLERANCES UNLESS OTHERWISE SPECIFIED			eng	Wei Yang	2014/08/27			ecn no	ELX-DG-18450-1						
				chr	Terry Qiu	2014/09/17										
				appr	Pei-Ming Zheng	2014/09/19						product family	3GIO		rel level	Released
surface ✓	linear	0.X ±0.3 0.XX ±0.20 0.XXX ±0.100		title SMT TYPE ASS'Y MICRO TCA	dwg no	10058835		rev H								
									ASME Y14.5	angular	0° ±2°					

PrintE File - REV C - 2009-06-09

NOTES:

1. MATERIAL:

HOUSING: HIGH TEMPERATURE, GLASS FILLED UL94V-0
RATED.

TERMINAL: COPPER ALLOY

PLATING: 1.27um NICKEL UNDERPLATE ALL OVER

CONTACT AREA PLATING - SEE PRODUCT NUMBER CODE

SOLDER TAIL: MAT TIN - 2.54um MIN.

SEE PRODUCT NUMBER CODE

2. PRODUCT SPECIFICATION: GS-12-362

3. PACKING SPECIFICATION: GS-14-1047

4. RoHS COMPATIBLE PRODUCT SPECIFICATIONS

a-PLATING:

-"LF" MEANS THE PRODUCT IS LEAD-FREE, 2um MINIMUM MATTE TIN OVER 1.27um
MINIMUM NICKEL UNDERPLATE.

b-MANUFACTURING PROCESS COMPATIBILITY

-THE HOUSING WILL WITHSTAND EXPOSURE TO 260°C±5°C SOLDER BATH TEMPERATURE FOR
5 SECONDS IN A REFLOW SOLDER APPLICATION WITH A 1.6mm MIN THICK CIRCUIT BOARD.

△ 5. A △ SYMBOL WILL BE NEXT TO ANY DIMENSION, VIEW, OR NOTE WHICH HAS BEEN MODIFIED WITH
THE CURRENT DRAWING REVISION.

6. MARKING INFORMATION:

P X X X X X X X X

PRODUCTION LINE CODE

DATE CODE THROUGH 01 TO 31

WEEK NUMBER 01 THROUGH 53

YEAR CODE;
MOST RIGHT OF DIGIT OF PRODUCTION.
(e.g 2007=7)

MANUFACTURE SITE; 2 FOR DONGGUAN

SOURCE, P FOR CHINA

HEIGHT OF THE MAKING TEXT: IMM MIN

PRODUCT NUMBER CODE

10058835 - X X X X L F

HOUSING COLOR OPTIONS

1-BLACK

2-WHITE

LEAD FREE

PEGS OPTIONS

0-PLASTIC PEGS

RESERVE

0-----WITHOUT MYLAR

1-----WITH MYLAR(35X8.0)

2-----WITH MYLAR(70X7.5)

3-----WITH MYLAR(22X7.0)

TERMINAL PLATING OPTIONS

0-0.76um Au CONTACT AREA

spec ref		*		dr	w wcadmin	2006/08/30	<div>projection</div> <div></div>	<div>MM</div> <div></div>	size	A4	scale	1:1
tolerance std	TOLERANCES UNLESS OTHERWISE SPECIFIED			eng	Wei Yang	2014/08/27			ecn no	ELX-DG-18450-1		
				chr	Terry Qiu	2014/09/17						
				appr	Pei-Ming Zheng	2014/09/19						
ASME Y14.5				product family			3GIO	rel level			Released	
surface	<div></div>	linear	0.X	±0.3	<div></div>	title	SMT TYPE ASS'Y		dwg no	10058835		rev
			0.XX	±0.20								
			0.XXX	±0.100								
	ASME Y14.5	angular	0°	±2°								
												H