

RATING AND CHARACTERISTIC CURVES 1SS400

LITEON

Fig.1 Typical Forward Characteristics

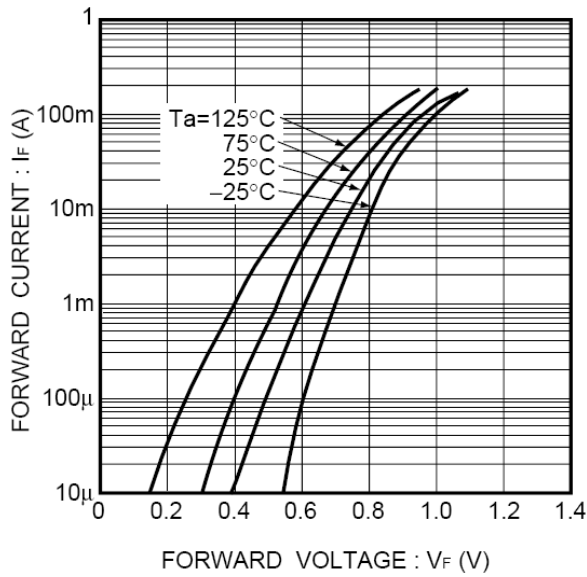


Fig.2 Typical Reverse Characteristics

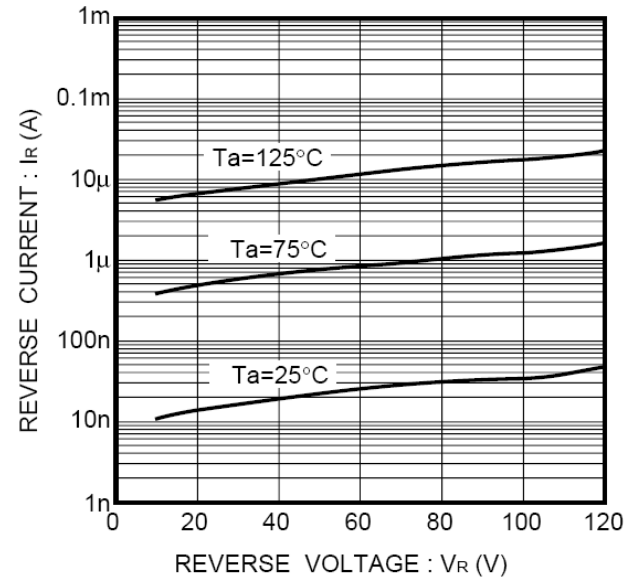


Fig.3 Total Capacitance vs. Reverse Voltage

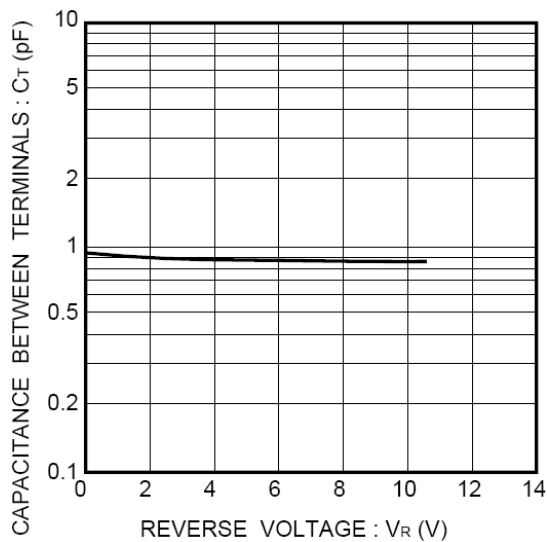


Fig.4 Reverse Recovery Time vs. Forward Current

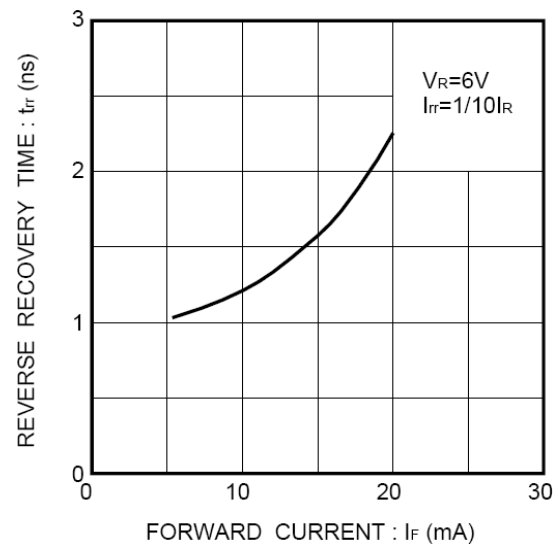


Fig.5 Surge Current Characteristics

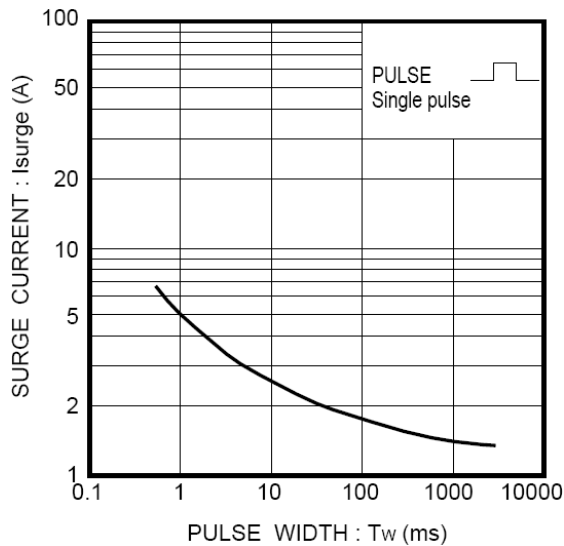
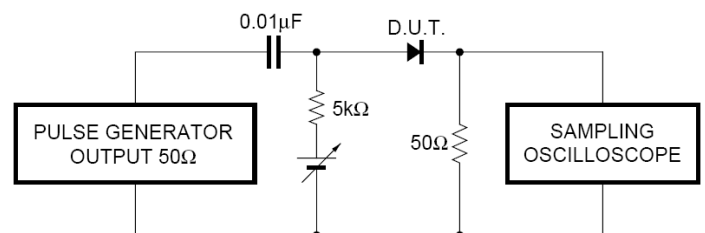



Fig.6 Reverse recovery time (t_{rr}) measurement circuit



Device Marking:

Device P/N	Marking code	Equivalent Circuit Diagram
1SS400	A	

Important Notice and Disclaimer

LSC reserves the right to make changes to this document and its products and specifications at any time without notice. Customers should obtain and confirm the latest product information and specifications before final design, purchase or use.

LSC makes no warranty, representation or guarantee regarding the suitability of its products for any particular purpose, nor does LSC assume any liability for application assistance or customer product design. LSC does not warrant or accept any liability with products which are purchased or used for any unintended or unauthorized application.

No license is granted by implication or otherwise under any intellectual property rights of LSC.

LSC products are not authorized for use as critical components in life support devices or systems without express written approval of LSC.

New Marking Rule Notification

Range: In order to have well management in process control, the new marking rule is applied to small signal device including Switching Diode, Transistor and Schottky Diode.

Package: SOD-123 / SOD-323 / SOD-523

