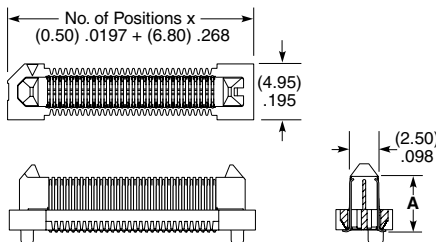
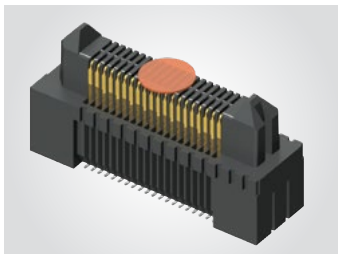
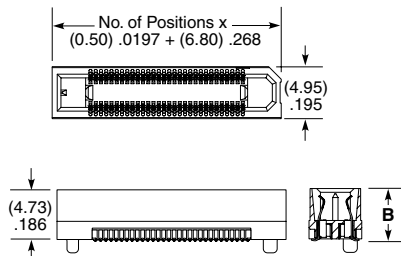


**(0.50 mm) .0197" PITCH • RUGGED HIGH-SPEED STRIPS**

SERIES	POSITIONS PER ROW	LEAD STYLE	PLATING OPTION	DV	PICK & PLACE PAD	"X"R
<b>ERM5</b> Header	<b>-010, -020, -030, -040, -050, -060, -070, -075</b>	<b>-02.0</b> = 2 mm Body Height (ERM5 only)	<b>-L</b> = 10 $\mu$ " (0.25 $\mu$ m) Gold on contact, Matte Tin on Tail		(required in callout)	<b>-TR</b> = Tape & Reel
<b>ERF5</b> Socket		<b>-04.0</b> = 4 mm Body Height (ERM5 only)			<b>-K</b> = (3.50 mm) .138" DIA Polyimide Film Pick & Place Pad (ERM5 -04.0 -05.0 and Lead Style only)	<b>-FR</b> = Full Reel Tape & Reel (must order maximum quantity per reel; contact Samtec for quantity breaks)
		<b>-05.0</b> = 5 mm Body Height			<b>-P</b> = Plastic Pick & Place Pad (ERM5 -02.0 Lead Style only; ERM5 -010 Positions and ERF5 Not Available)	
		<b>-07.0</b> = 7 mm Body Height (ERF5 only & Available up to 50 Pos. only)				

**ERM5**  
Board Mates:  
ERF5


LEAD STYLE	A (ERM5)	B (ERF5)
-02.0	(4.84) .191	N/A
-04.0	(6.84) .269	N/A
-05.0	(7.84) .309	(4.91) .193
-07.0	N/A	(6.91) .272

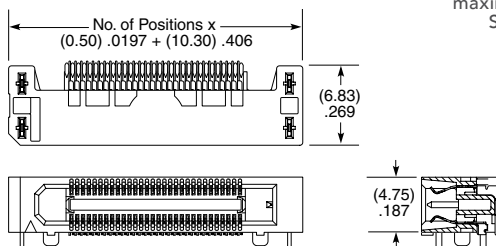
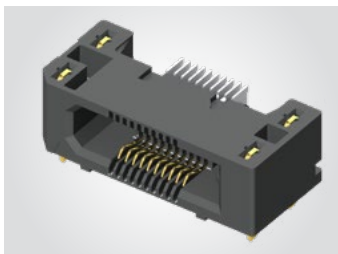
**ERF5**  
Board Mates:  
ERM5


MATED HEIGHT*		
ERM5 LEAD STYLE	ERF5 LEAD STYLE	
	-05.0	-07.0
-02.0	(7.00) .276	(9.00) .354
-04.0	(9.00) .354	(11.00) .433
-05.0	(10.00) .394	(12.00) .472

\*Processing conditions will affect mated height.

View complete specifications at: [samtec.com?ERM5](http://samtec.com?ERM5) or [samtec.com?ERF5](http://samtec.com?ERF5)

ERF5	POSITIONS PER ROW	01	PLATING OPTION	D	RA	"X"R
Right-Angle Socket	<b>-010, -020, -030, -040, -050</b>		<b>-L</b> = 10 $\mu$ " (0.25 $\mu$ m) Gold on contact, Matte Tin on tail			<b>-TR</b> = Tape & Reel
<b>ERF5-RA</b> Board Mates: ERM5						<b>-FR</b> = Full Reel Tape & Reel (must order maximum quantity per reel; contact Samtec for quantity breaks)



**Note:**  
Some lengths, styles and options are non-standard, non-returnable.

View complete specifications at: [samtec.com?ERF5-RA](http://samtec.com?ERF5-RA)