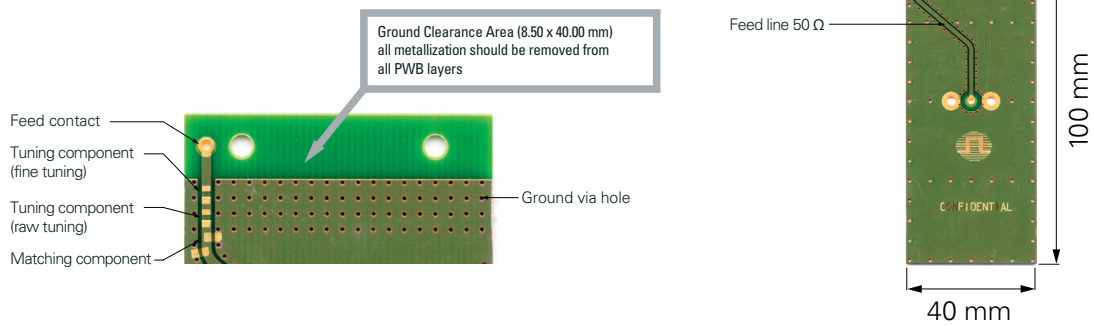


ISM 433MHz Helical Antenna

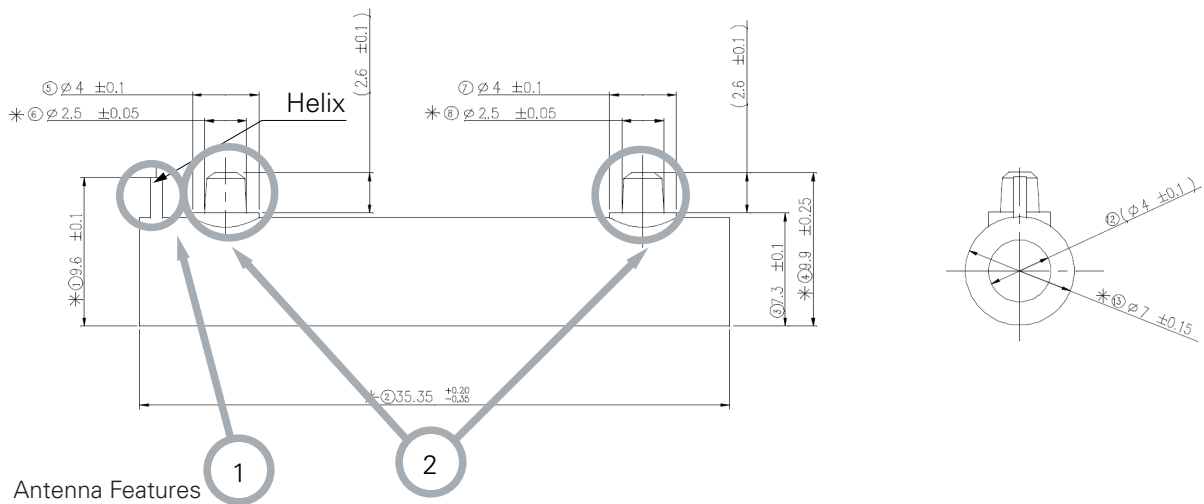
Ground cleared under antenna, clearance area 8.50x40.00 mm. Pulse Part Number: W3127

Terminal Configuration

PWB Layout

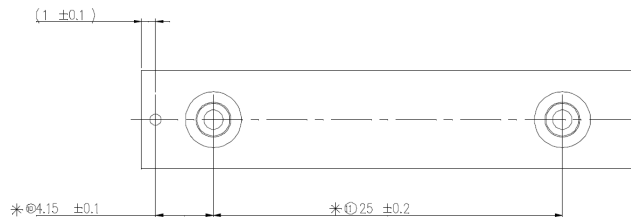


Terminal Configuration and Antenna Dimensions



Antenna Features

No.	Terminal Name	Terminal Dimensions
1	Feed terminal	Wire diameter 0.8mm
2	Support	Diameter 2.5mm, length 2.6mm



Matching circuit needs to be placed on PCB close to antenna feed terminal.

Matching component values depend on device construction; size, surrounding mechanics, materials etc..

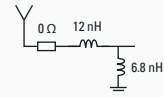
ISM 433MHz Helical Antenna

Ground cleared under antenna, clearance area 8.50x40.00 mm. Pulse Part Number: W3127

Typical Electrical Characteristics (T=25 °C)

Typical Return Loss S11/ impedance,

Measured on the 100x40mm test board with tuning and matching circuit



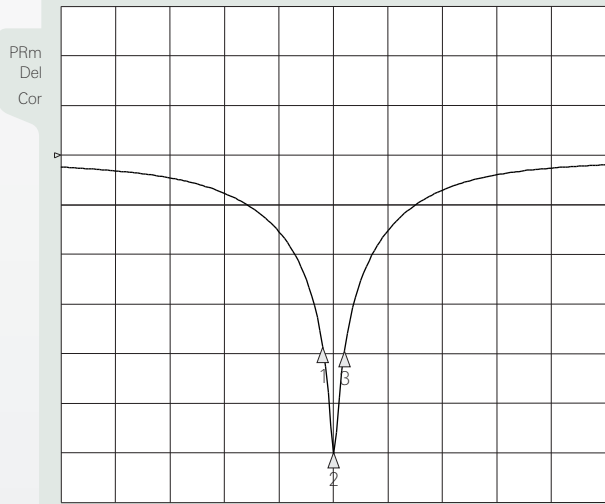
ISM 433MHz

3 Jan 2008 14:56:23

CH1Markers

- 1. -21.132 dB 433 MHz
- 2. -32.939 dB 434 MHz
- 3. -21.458 dB 435 MHz

CH1 S11 log MAG 5 dB/REF 0 dB



CENTER 434.000 000 MHz

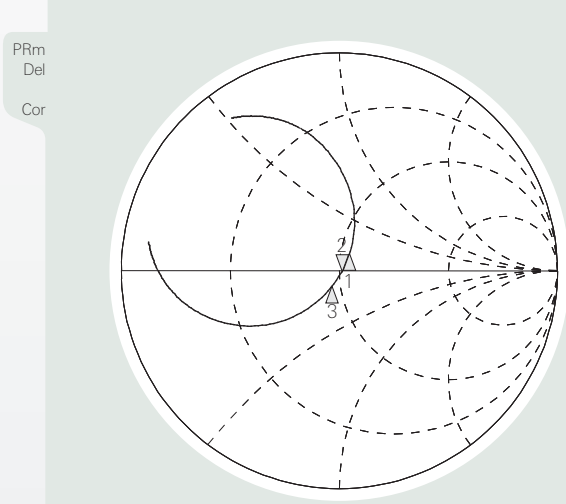
SPAN 50.000 000 MHz

ISM 433MHz

3 Jan 2008 14:56:36

- | | | |
|-----------------|------------|-----------|
| 1. 54.908 Ω | 7.666 Ω | 433 MHz |
| 2. 51.811 Ω | -777.34 mΩ | 471.76 pF |
| 434.000 000 MHz | | |
| 3. 46.588 Ω | -7.293 Ω | 435 MHz |

CH1 S11 1 U FS

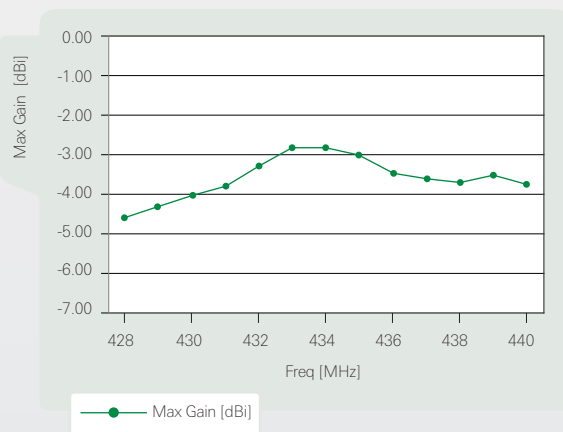


CENTER 434.000 000 MHz

SPAN 50.000 000 MHz

Free space maximum gain, PWB ground clearance area 8.50 x 40.00 mm

W3127 Max Gain



ISM 433MHz Helical Antenna

Ground cleared under antenna, clearance area 8.50x40.00 mm. Pulse Part Number: W3127

Typical Free space Radiation Patterns

