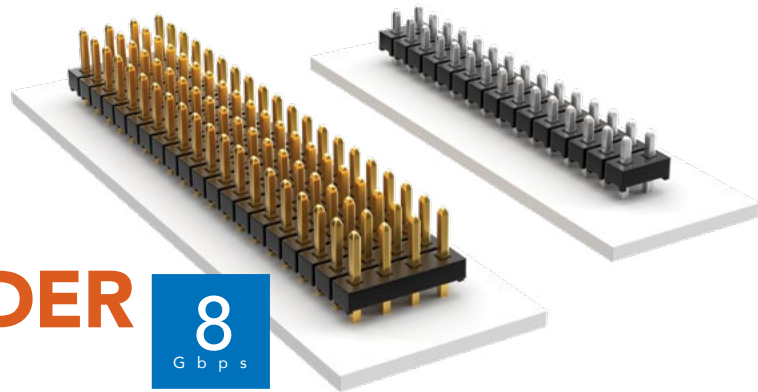


THROUGH-HOLE LOW-PROFILE HEADER

(2.00 mm) .0787" PITCH • TMM SERIES



TMM

Board Mates:

CLT, SQT, SQW, ESQT,
TLE, SMM, MMS

Cable Mates:

TCSD

SPECIFICATIONS

Insulator Material:

Black Liquid Crystal Polymer

Terminal Material:

Phosphor Bronze

Plating:

Sn or Au over

50 μ " (1.27 μ m) Ni

Current Rating (SMM/TMM):

3.2 A per row

(2 pins powered)

Operating Temp Range:

-55 °C to +105 °C with Tin;

-55 °C to +125 °C with Gold

Voltage Rating:

281 VAC mated with SQW;

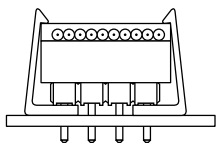
250 VAC mated with SQT

PROCESSING

Lead-Free Solderable:

Yes

APPLICATION



Retention Clip Option (-RC)

ALSO AVAILABLE

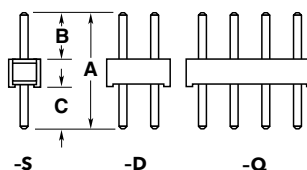
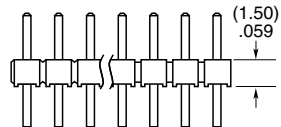
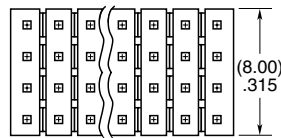
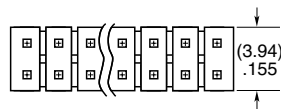
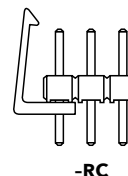
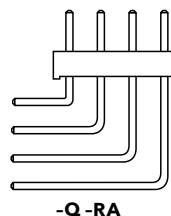
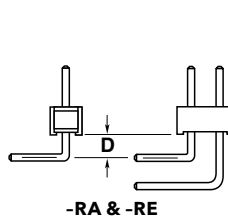
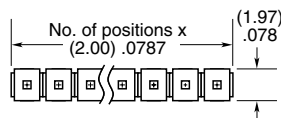
Other plating
(MOQ Required)



Note:

Some lengths, styles and
options are non-standard,
non-returnable.

TMM	1	NO. PINS PER ROW	LEAD STYLE	PLATING OPTION	ROW OPTION	OTHER OPTION
		02 thru 50	Specify LEAD STYLE from chart	-F = Gold flash on post, Matte Tin on tail -L = 10 μ " (0.25 μ m) Gold on post, Matte Tin on tail -S = 30 μ " (0.76 μ m) Gold on post, Matte Tin on tail -T = Matte Tin	-S = Single Row -D = Double Row -Q = Four Row	-RA & -RE = Right-angle (Lead Style -01 only) (2 positions minimum, -Q row) -RC = Retention Clip (Mates with TCSD) (Double row only, 4 positions minimum, only available -06 lead style) -"XXX" = Polarized Position (Specify position of omitted pin)



OPTION	D
-RA	(1.27) .050
-RE	(3.56) .140

LEAD STYLE	A	B	C
-01		(3.20) .126	(3.50) .138
-02	(8.20) .323	(3.70) .146	(3.00) .118
-03		(4.00) .158	(2.70) .106
-04	(5.69) .224	(1.91) .075	
-05	(5.43) .214	(1.65) .065	(2.29) .090
-06	(9.58) .377	(3.20) .126	(4.88) .192