

| SERIES | 1 | NO. PINS PER ROW | LEAD STYLE | PLATING OPTION | ROW OPTION | OPTIONS |
|--------------------------|---|---|---|--|--|---|
| SFM = Standard | | 03, 04, 06, 08 (SFM only) | (Surface Mount) -02 = Tiger Eye™ Contact (BeCu) | (Through-hole) -01, -03 = Tiger Eye™ Contact (BeCu) | -L = 10 μ" (0.25 μm) Gold on contact, Matte Tin on tail (Call Samtec for E.L.P.™ plating option) | Specify only -A, -LC or -DS (Not available with -DH, -SH) |
| SFML = Locking | | 05, 07, 10, 15, 20, 25, 30, 35, 40, 45, 50 (Standard sizes) | -L2 = Low Insertion Force Tiger Eye™ Contact (BeCu) | -L1, -L3 = Low Insertion Force Tiger Eye™ Contact (BeCu) | -D = Double Row | Specify only -K or -P (Lead styles -02, -L2, -T2 only) |
| | | | -T2 = Tiger Eye™ LITE Contact (Phosphor Bronze) | -T1 = Tiger Eye™ LITE Contact (Phosphor Bronze) | -SH = Single Horizontal (05 thru 30 positions only) (SFM only) (Lead style -02 only) | -A = Alignment Pin |
| | | | | | -DH = Double Horizontal (05 thru 30 positions only) (SFM only) (Lead style -02 only) | -LC = Locking Clip (Manual placement required) |
| | | | | | | -DS = Dual Screw Down for (1.60 mm) .062" PCB (05 thru 40 positions only) (Lead styles -01, -02 & -03 only) (Requires -D row option) (Not available with SFML) (Mates with TFM-DS option) (Not available with -A, -LC, -K, -P, -XR) |
| | | | | | | -K = Polyimide film Pick & Place Pad (Not available with -DH, -SH) |
| | | | | | | -P = Plastic Pick & Place Pad (Not available with -DH, -SH) |
| | | | | | | Specify -TR or -FR last; Required for -DH & -SH. (Lead styles -02, -L2 & -T2 only) |
| | | | | | | -TR = Tape & Reel |
| | | | | | | -FR = Full Reel Tape & Reel (must order max. quantity per reel; contact Samtec for quantity breaks) |

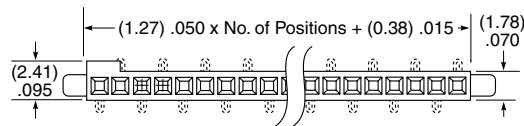
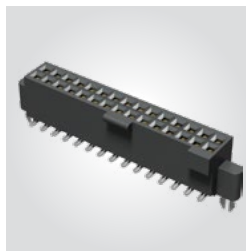
SFM

Board Mates:
TFM

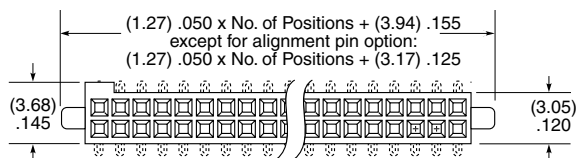
Cable Mates:
TFSD, TFS

SFML

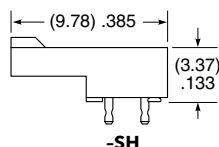
Board Mates:
TFML



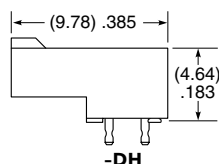
SINGLE ROW



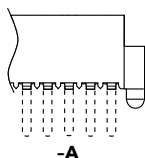
DOUBLE ROW



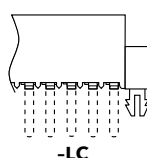
-SH



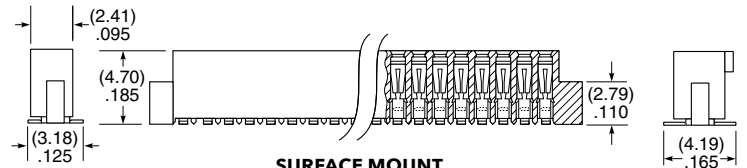
-DH



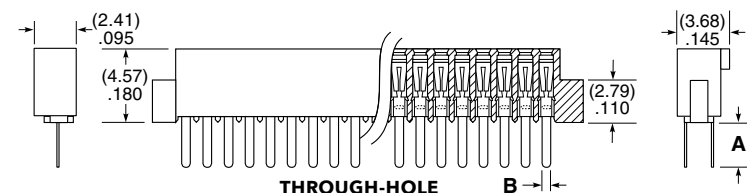
-A



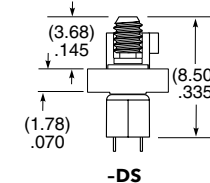
-LC



SURFACE MOUNT



THROUGH-HOLE



-DS

| LEAD STYLE | A | B |
|---------------|-------------|-------------|
| -01, -L1, -T1 | (3.05) .120 | (0.51) .020 |
| -03, -L3 | (1.91) .075 | (0.41) .016 |

Note:
Some lengths, styles and options are non-standard, non-returnable.

View complete specifications at: samtec.com?SFM & samtec.com?SFML