

■ Absolute Maximum Ratings (Ta = 25°C)

Item		Symbol	Rating	Unit	Measurement Conditions
Input	LED forward current	I _F	50	mA	
	Repetitive peak LED forward current	I _{FP}	1	A	100 μs pulses, 100 pps
	LED forward current reduction rate	Δ I _F /°C	−0.5	mA/°C	T _a ≥ 25°C
	LED reverse voltage	V _R	5	V	
	Connection temperature	T _j	125	°C	
Output	Output dielectric strength	V _{OFF}	350	V	
	Continuous load current	I _O	150 (100)	mA	
	ON current reduction rate	Δ I _{ON} /°C	−1.5 (−1)	mA/°C	T _a ≥ 25°C
	Connection temperature	T _j	125	°C	
Dielectric strength between input and output (See note 1.)		V _{I-O}	2,500	V _{rms}	AC for 1 min
Operating temperature		T _a	−40 to +85	°C	With no icing or condensation
Storage temperature		T _{stg}	−55 to +125	°C	With no icing or condensation
Soldering temperature (10 s)		---	260	°C	10 s

Values in parentheses are for the G3VM-354C1/F1.

■ Electrical Characteristics (Ta = 25°C)

Item	Symbol	Minimum	Typical	Maximum	Unit	Measurement conditions
Input	LED forward voltage	V_F	1.0	1.15	1.3	V
	Reverse current	I_R	---	---	10	μA
	Capacity between terminals	C_T	---	30	---	pF
	Trigger LED forward current	I_{FT}	---	1	3	mA
Output	Maximum resistance with output ON	R_{ON}	---	15 (30)	25 (50)	Ω
	Current leakage when the relay is open	I_{LEAK}	---	---	1.0	μA
Capacity between I/O terminals		C_{I-O}	---	0.8	---	pF
Insulation resistance		R_{I-O}	1,000	---	---	M Ω
Turn-ON time		t_{ON}	---	0.1 (0.25)	1.0 (0.5)	ms
Turn-OFF time		t_{OFF}	---	1.0 (0.5)	3.0 (1)	ms

Values in parentheses are for the G3VM-354C1/F1.

■ Recommended Operating Conditions

Use the G3VM under the following conditions so that the Relay will operate properly.

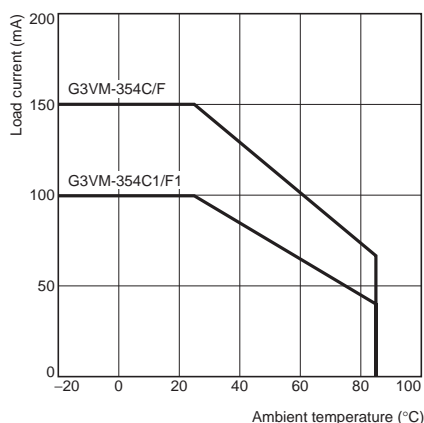
Item	Symbol	Minimum	Typical	Maximum	Unit
Output dielectric strength	V_{DD}	---	---	280	V
Operating LED forward current	I_F	5	---	25	mA
Continuous load current	I_O	---	---	150 (100)	mA
Operating temperature	T_a	-20	---	65	°C

Values in parentheses are for the G3VM-354C1/F1.

■ Engineering Data

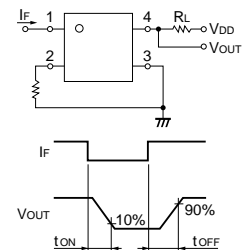
Load Current vs. Ambient Temperature

G3VM-354C(F)
G3VM-354C1/F1



Note: 1. The dielectric strength between the input and output was checked by applying voltage between all pins as a group on the LED side and all pins as a group on the light-receiving side.

Note: 2. Turn-ON and Turn-OFF Times



■ Safety Precautions

Refer to "Common Precautions" for all G3VM models.