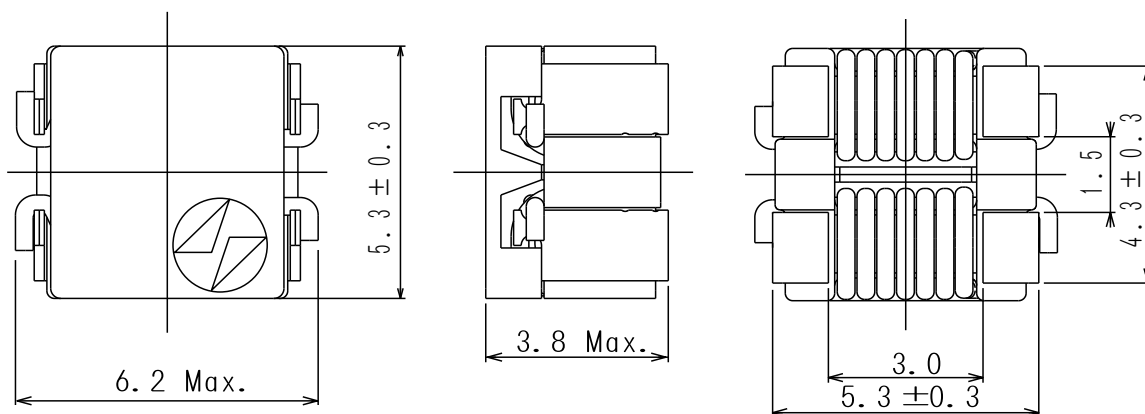
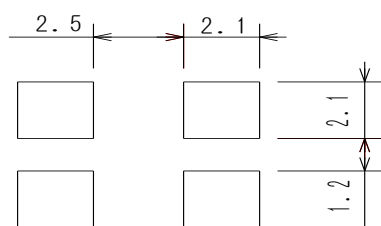
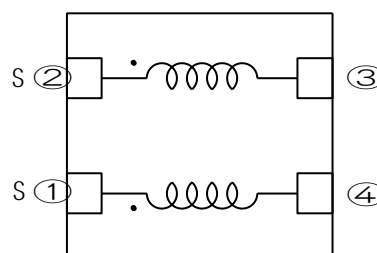


Type: CPFC6D36
◆ Product Description

- 6.2×5.6mm Max.(L×W), 3.8mm Max. Height .

◆ Feature

- High impedance in wide range of frequency.
- Ideally used in DC line noise for LCD TV and PC.
- RoHS Compliance


◆ Dimensions (mm)

◆ Land Pattern (mm)

◆ Schematics (Bottom)


* Winding start is #1,#2 or #4,#3.

* #1 and #4,#2 and #3 : should be same polarity.

◆ Specification

Part Name	Stamp	Impedance (Ω)<Min.> (1,2-3,4) 100MHz	D.C.R. (mΩ)<Max.> (1-4),(2-3)	Rated current (1-2)(A) ※1 (3-4) shorted
CPFC6D36NP-1ØMØ6	060	600	20	2.5

※ Rated current: The DC current at which the temperature rise is $\Delta t=30^{\circ}\text{C}$. ($T_a=20^{\circ}\text{C}$).