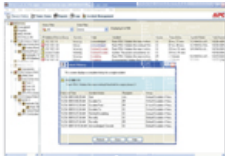


### InfraStruXure Manager

#### InfraStruXure® Manager Incident Management Module



[More Images](#)

Notification and event analysis for managing network-critical physical infrastructure (NCPI). Increase confidence of your NCPI availability by adding the Incident Management Module to your APC InfraStruXure® Manager. The added module enables quick and easy identification of the physical location and logical impact of a problem, and identifies the owner of the problem resolution. It helps establish and confirm a policy appropriate to your organization, ensuring the right people are notified for fast problem resolution, and prioritizes the urgency level of the incident accordingly. The Incident Management Module enables you to take proper corrective actions to return to the normal service level quickly, with minimal impact on business activity.

**Standard Lead Time:** While Supplies Last



Be the first to [write a review](#)

Share this Product: [f](#) [g+](#) [t](#) [v](#)

AP9435

[Email Technical Specifications](#)

[Printer Friendly](#)

[Locate a Partner](#)

#### Product Category

- Enterprise (2)
- Operations (12)
- Control
  - > StruxureWare Data Center Expert
  - > StruxureWare Power Monitoring Expert
- Management Software Services (4)

[Return to StruxureWare for Data Centers](#)

#### Product Overview

#### Software & Firmware

#### Options

#### Ratings and Reviews

#### AP9435 Features

**Customized escalation policies** Alerts are managed according to your escalation policies and received in multiple formats.

#### InfraStruxure Manager Features & Benefits

##### Availability

|                        |   |
|------------------------|---|
| Centralized management | Simplify data center infrastructure management by using a centralized repository accessible from anywhere on the network through a powerful and easy-to-use console application.                        |
| Remote administration  | Minimize response times to critical network infrastructure situations with instant, on-demand device access through the primary IP network, console port, or KVM switches.                              |
| Fault notification     | Real-time event notification minimizes response times to critical physical infrastructure situations. Enables IT Administrators to reduce mean time to repair, improve efficiency, and maximize uptime. |
| Power flow diagrams    | Generate mimic diagrams showing system layout; see potential problems before they occur.  |
| Rack level management  | Helps decision-making on where to locate new equipment without overloading branch circuits. Receive notifications of changes in rack power draw.  |
| Notification groups    | Group devices to ensure the right people receive warnings to prevent and fix potential problems in a timely manner.   |

##### Agility

|                                   |  |
|-----------------------------------|--|
| Multi-device support              | Manage an extensive range of APC devices including: single-phase and three-phase UPSs, power distribution units, cooling and environmental devices as well as other InfraStruXure® Manager Appliances.   |
| Scalability                       | The extensible platform can be scaled to meet changing business needs and requirements on demand. The management of additional devices is allowed as needed, while powerful facility and service management applications help to expand the product's management capabilities. |
| Auto-discovery                    | Speed deployment by specifying remote network segments or an IP address range to discover APC devices.   |
| Concurrent Deployment and Updates | Decrease set-up time and complexity by simultaneously configuring settings or upgrading firmware for multiple devices.   |
| Data logging                      | Identify problematic trends before they escalate or export the data log for analysis.  |
| Battery status reports            | Help prevent problems and pinpoint additional runtime requirements.  |
| Private IP Network                | Manage multiple devices from a single IP address.  |

##### Total Cost of Ownership

|   |  |
|---|--|
| Browser Accessible                      | View the user interface with a browser. Gives quick access from anywhere on the network without the need to install software.  |
| Global Threshold Alarms                 | Set standards for select UPSs, PDUs and environmental settings to stay informed of system performance.   |
| Recommended Actions                     | Intelligent alarm descriptions coupled with recommended resolutions reduces the need for training and mean time to repair.   |
| Set-Up Wizards                          | Easy to use wizards speed deployment by decreasing set up time.  |
| Floor layout view                       | Integration with InfraStruXure® Designer enables import of the customized, aerial representation of a room layout for ease of navigation and improved monitoring, which minimizes errors and cost. |
| Building management system integration  | Send alarms and data points allowing you to manage critical building infrastructure from a single system.  |
| Enterprise management system compatible | Make device information available to your preferred enterprise management system by forwarding SNMP traps (events) across SNMPv1, SNMPv2 and SNMPv3 using the PowerNet MIB                         |

##### Protection

|                   |   |
|-------------------|---|
| Password Security | User-selectable password protection prevents unauthorized access, authorized against LDAP and Active Directory servers. |
| Read-only Access  | Share access without risking unauthorized configuration changes.  |
| Encryption        | Helps ensure effective access control and integrity for SSL browser and SSH sessions.                                   |
| Radius support    | Use an existing radius server to securely authenticate, authorize, and account for your APC device.                     |