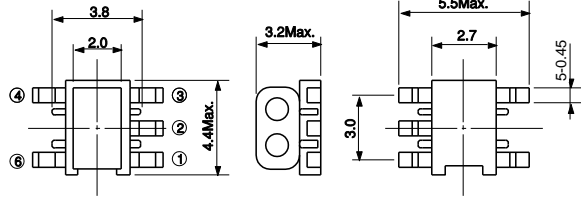
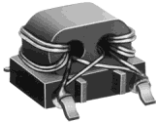


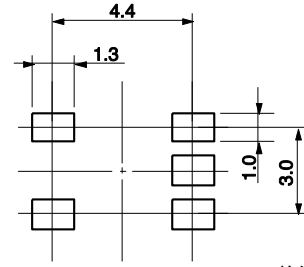
TYPE B4F/ B4F型



Recommended patterns
推荐焊盘尺寸



(Unit: mm) (单位:毫米)

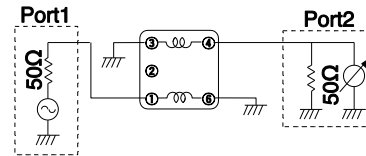


(Unit: mm) (单位:毫米)

Balun Transformers 平衡—不平衡变压器

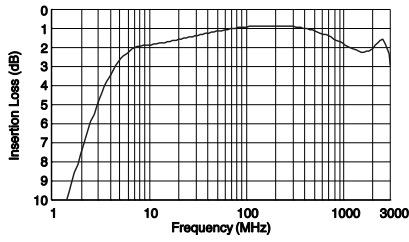
| Part No. | Winding Turns | μiac |
|----------------|---------------|------|
| #617DB-1653=P3 | 2 1/2 T | 300 |
| #617DB-1654=P3 | 3 1/2 T | 300 |
| #617DB-1655=P3 | 4 1/2 T | 300 |
| #617DB-1724=P3 | 5 1/2 T | 300 |

Test Circuit 测试电路

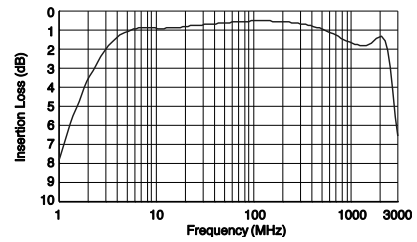


Typical Characteristics 典型特性

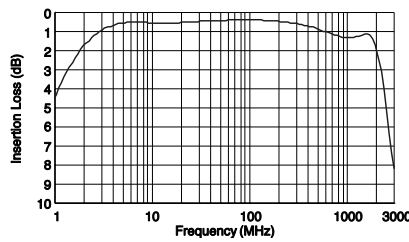
1) #617DB-1653=P3 50Ω:50Ω



2) #617DB-1654=P3 50Ω:50Ω



3) #617DB-1655=P3 50Ω:50Ω



4) #617DB-1724=P3 50Ω:50Ω

