

## CAT. NO. &amp; DIMENSIONS

NOTE3	NO. OF CONTACTS (n)	CAT. NO.	DIMENSIONS (NOTE2)		
			A ±0.2	B ±0.2	C ±0.2
	4	SFW4S-2ST_A_LF	10.4	5.24	3
	5	SFW5S-2ST_A_LF	11.4	6.24	4
	6	SFW6S-2ST_A_LF	12.4	7.24	5
*	7	SFW7S-2ST_A_LF	13.4	8.24	6
	8	SFW8S-2ST_A_LF	14.4	9.24	7
*	9	SFW9S-2ST_A_LF	15.4	10.24	8
	10	SFW10S-2ST_A_LF	16.4	11.24	9
	11	SFW11S-2ST_A_LF	17.4	12.24	10
*	12	SFW12S-2ST_A_LF	18.4	13.24	11
	13	SFW13S-2ST_A_LF	19.4	14.24	12
	14	SFW14S-2ST_A_LF	20.4	15.24	13
	15	SFW15S-2ST_A_LF	21.4	16.24	14
	16	SFW16S-2ST_A_LF	22.4	17.24	15
	17	SFW17S-2ST_A_LF	23.4	18.24	16
*	18	SFW18S-2ST_A_LF	24.4	19.24	17
*	19	SFW19S-2ST_A_LF	25.4	20.24	18
	20	SFW20S-2ST_A_LF	26.4	21.24	19
*	21	SFW21S-2ST_A_LF	27.4	22.24	20
	22	SFW22S-2ST_A_LF	28.4	23.24	21
	23	SFW23S-2ST_A_LF	29.4	24.24	22
	24	SFW24S-2ST_A_LF	30.4	25.24	23
*	25	SFW25S-2ST_A_LF	31.4	26.24	24
	26	SFW26S-2ST_A_LF	32.4	27.24	25
*	27	SFW27S-2ST_A_LF	33.4	28.24	26
	28	SFW28S-2ST_A_LF	34.4	29.24	27
	29	SFW29S-2ST_A_LF	35.4	30.24	28
	30	SFW30S-2ST_A_LF	36.4	31.24	29
*	31	SFW31S-2ST_A_LF	37.4	32.24	30
*	32	SFW32S-2ST_A_LF	38.4	33.24	31

CAT. NO. SFW (n) S - 2 ST - A - - LF

SERIES ———

NO. OF CONTACTS ———

STRAIGHT TYPE ———

FOR FPC / FFC ———

VARIATION ———

STM : FOR AUTOMATIC MOUNTING (SMT)  
WITH MOUNTING PLATE

ST : FOR AUTOMATIC MOUNTING (SMT)  
WITHOUT MOUNTING PLATE

GOLD PLATING ———

PACKAGE STYLE ———

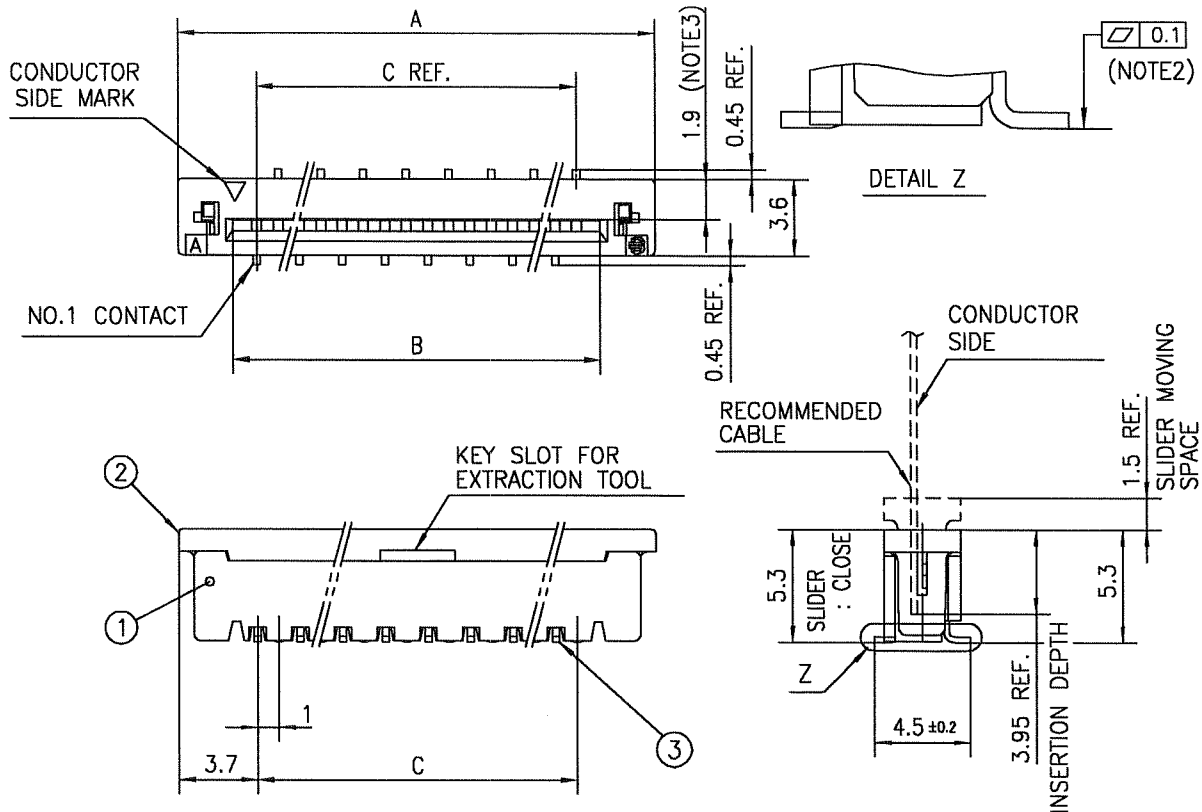
LEAD FREE ———

## NOTES

- THIS PRODUCT IS THE CONNECTOR, DESIGNED TO TERMINATE FPC/FFC AND COPE WITH AUTOMATIC MOUNTING (SMT).
- SEE PART DRAWINGS FOR DIMENSIONS A.B.C.
- PLEASE CONSULT US IN CASE OF USING PARTS WITH \* MARK

mat'l. code				surface 58 / tolerance ISO 406 / ISO 1101		projection		product family 58SF		CODE JP	
ltr	ecn no	dr	date	tolerances unless otherwise specified		mm		title			
A	J05-0457	H.T	2005-7-19	angles linear		scale X		CAT. NO. TABLE FOR 1mm SPACING SMT CONNECTOR (CAT.No.SFW__S-2ST_A_LF)			
B	J05-0547	H.T	2005-8-30					dwg no sheet 1 of 1 size			
C	J06-0430	H.T	2006-10-19					JSA 96624 A4			
D	J07-0407	H.T	2007-8-9	dr engr chr appd		2007-8-9 2007-8-9 2007-8-9 2007-8-9		type Product Customer Drawing			
sheet index		revision D		sheet 1						Rev D	

SC-SFWS 05 JSA96625 96626 96627 96628 96629  
form: A4



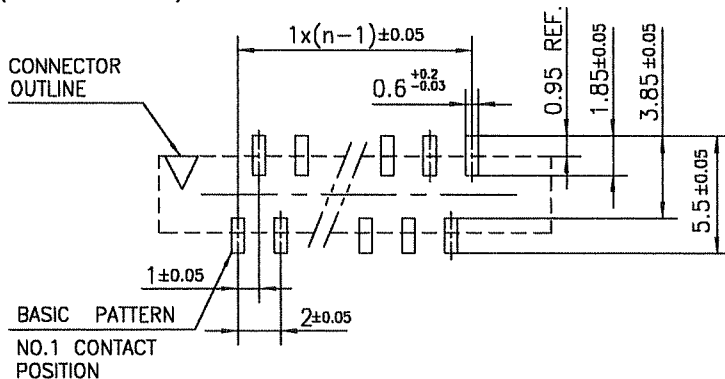
PT. NO.	PARTS NAME	MATERIAL	Q'TY	NOTE
1	HOUSING	GLASS FILLED THERMOPLASTIC RATED. (UL94V-0)	1	COLOR : BROWN
2	SLIDER	PHOSPHOR BRONZE	1	COLOR : BLACK
3	CONTACT	PHOSPHOR BRONZE	n	PLATING : GOLD PLATING

n : NO. OF CONTACTS

#### NOTES

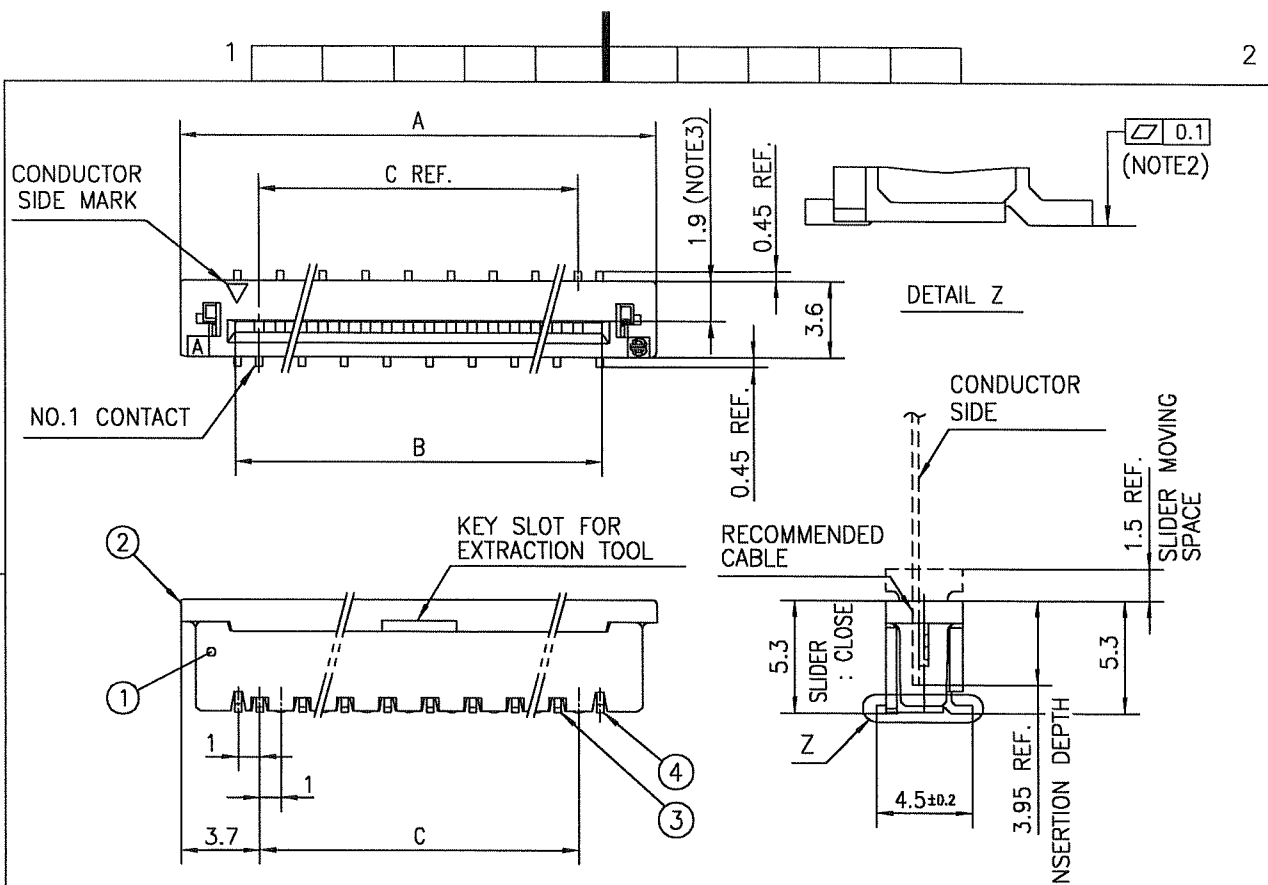
1. THIS PRODUCT IS THE CONNECTOR DESIGNED TO TERMINATE FPC/FFC AND COPE WITH AUTOMATIC MOUNTING (SMT).
2. FLATNESS OF CONTACT TERMINAL MUST BE WITHIN TOLERANCE IN Z PORTION DETAILED DRAWING.
3. THIS DIMENSION IS SPACE FOR THE NOZZLE OF MOUNTER.
4. THIS PRODUCT MEETS EUROPEAN UNION DIRECTIVES AND OTHER COUNTRY REGULATIONS AS DESCRIBED IN GS-22-008
5. THE HOUSING WILL WITHSTAND EXPOSURE TO 260°C PEAK TEMPERATURE FOR 10 SECONDS IN A REFLOW SOLDERING OVEN.

#### RECOMMENDED PC BOARD LAYOUT (COMPONENT SIDE)



mat'l. code				surface 58 / tolerance ISO 1302 / ISO 406 / ISO 1101		projection		product family 58SF		CODE JP	
ltr	ecn no	dr	date	tolerances unless otherwise specified		mm		title			
A	J05-0457	H.T	7/19/05	±0.2		mm		1mm SPACING SURFACE MOUNT FPC/FFC CONNECTOR (CAT.No.SFW__S-2STA_LF)			
B	J05-0731	H.T	10/28/05	linear		mm		dwg no sheet 1 of 1 size			
C	J06-0430	H.T	10/19/06			scale X		JSA 96625 A4			
				dr	10/19/06	FCI		type Product Customer Drawing			
				engr	10/19/06			Rev.			
				chr	10/19/06			C			
				appd	10/20/06			D			
sheet index		revision sheet 1									

SC-SFWS 05 JSA96624 form: A4



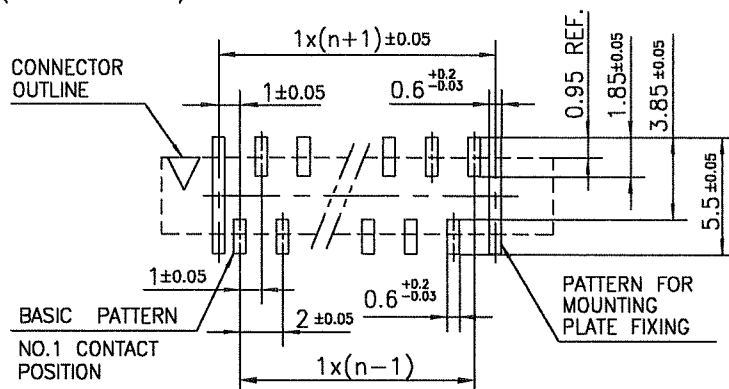
PT. NO.	PARTS NAME	MATERIAL	Q'TY	NOTE
1	HOUSING	GLASS FILLED THERMOPLASTIC RATED. (UL94V-0)	1	COLOR : BROWN
2	SLIDER	(UL94V-0)	1	COLOR : BLACK
3	CONTACT	PHOSPHOR BRONZE	n	PLATING : GOLD PLATING
4	MOUNTING PLATE	BRASS	2	PLATING : Sn Ni UNDER PLATED

n : NO. OF CONTACTS

#### NOTES

1. THIS PRODUCT IS THE CONNECTOR DESIGNED TO TERMINATE FPC/FFC AND COPE WITH AUTOMATIC MOUNTING (SMT).
2. FLATNESS OF CONTACT TERMINAL AND MOUNTING PLATE MUST BE WITHIN TOLERANCE IN Z PORTION DETAILED DRAWING.
3. THIS DIMENSION IS SPACE FOR THE NOZZLE OF MOUNTER.
4. THIS PRODUCT MEETS EUROPEAN UNION DIRECTIVES AND OTHER COUNTRY REGULATIONS AS DESCRIBED IN GS-22-008
5. THE HOUSING WILL WITHSTAND EXPOSURE TO 260°C PEAK TEMPERATURE FOR 10 SECONDS IN A REFLOW SOLDERING OVEN.

#### RECOMMENDED PC BOARD LAYOUT (COMPONENT SIDE)



mat'l. code				surface 58 / tolerance ISO 1302 / ISO 406 / ISO 1101	projection	product family 58SF	CODE JP
ltr	ecn no	dr	date	tolerances unless otherwise specified	mm	title 1mm SPACING SURFACE MOUNT FPC/FFC CONNECTOR (CAT.No.SFW__S-2STMA__LF)	
A	J05-0457	H.T	7/19/05	angles linear ±0.2			
B	J05-0731	H.T	10/28/05			dwg no sheet 1 of 1 size JSA 96626 A4	
C	J06-0430	H.T	10/19/06		scale X		
				dr 10/19/06	FCI	type Product Customer Drawing	
				engr 10/19/06			
				chr 10/19/06			
				appd 10/20/06			
sheet index	revision sheet	C	1				Rev. C

SC-SFWS 05 JSA96624  
form: A4

## CAT. NO. &amp; DIMENSIONS

(NOTE4)	NO. OF CONTACTS (n)	CAT. NO. (NOTE2)	DIMENSIONS (NOTE3)		
			D ± 5	E ± 0.3	F ± 0.1
	4	SFW4S-2ST_AE1LF	28.4	24	—
	5	SFW5S-2ST_AE1LF	28.4	24	—
	6	SFW6S-2ST_AE1LF	28.4	24	—
*	7	SFW7S-2ST_AE1LF	28.4	24	—
	8	SFW8S-2ST_AE1LF	28.4	24	—
*	9	SFW9S-2ST_AE1LF	28.4	24	—
	10	SFW10S-2ST_AE1LF	28.4	24	—
	11	SFW11S-2ST_AE1LF	28.4	24	—
*	12	SFW12S-2ST_AE1LF	36.4	32	28.4
	13	SFW13S-2ST_AE1LF	36.4	32	28.4
	14	SFW14S-2ST_AE1LF	36.4	32	28.4
	15	SFW15S-2ST_AE1LF	36.4	32	28.4
	16	SFW16S-2ST_AE1LF	48.4	44	40.4
	17	SFW17S-2ST_AE1LF	48.4	44	40.4
*	18	SFW18S-2ST_AE1LF	48.4	44	40.4
*	19	SFW19S-2ST_AE1LF	48.4	44	40.4
	20	SFW20S-2ST_AE1LF	48.4	44	40.4
*	21	SFW21S-2ST_AE1LF	48.4	44	40.4
	22	SFW22S-2ST_AE1LF	48.4	44	40.4
	23	SFW23S-2ST_AE1LF	48.4	44	40.4
	24	SFW24S-2ST_AE1LF	48.4	44	40.4
*	25	SFW25S-2ST_AE1LF	48.4	44	40.4
	26	SFW26S-2ST_AE1LF	48.4	44	40.4
*	27	SFW27S-2ST_AE1LF	60.4	56	52.4
	28	SFW28S-2ST_AE1LF	60.4	56	52.4
	29	SFW29S-2ST_AE1LF	60.4	56	52.4
	30	SFW30S-2ST_AE1LF	60.4	56	52.4
*	31	SFW31S-2ST_AE1LF	60.4	56	52.4
*	32	SFW32S-2ST_AE1LF	60.4	56	52.4

CAT. NO. SFW (n) S - 2 ST\_ A \_ \_ LF

SERIES

NO. OF CONTACTS

STRAIGHT TYPE

FOR FPC / FFC

VARIATION

STM:FOR AUTOMATIC MOUNTING (SMT)  
WITH MOUNTING PLATE

ST:FOR AUTOMATIC MOUNTING (SMT)  
WITHOUT MOUNTING PLATE

GOLD PLATING

PACKAGE STYLE

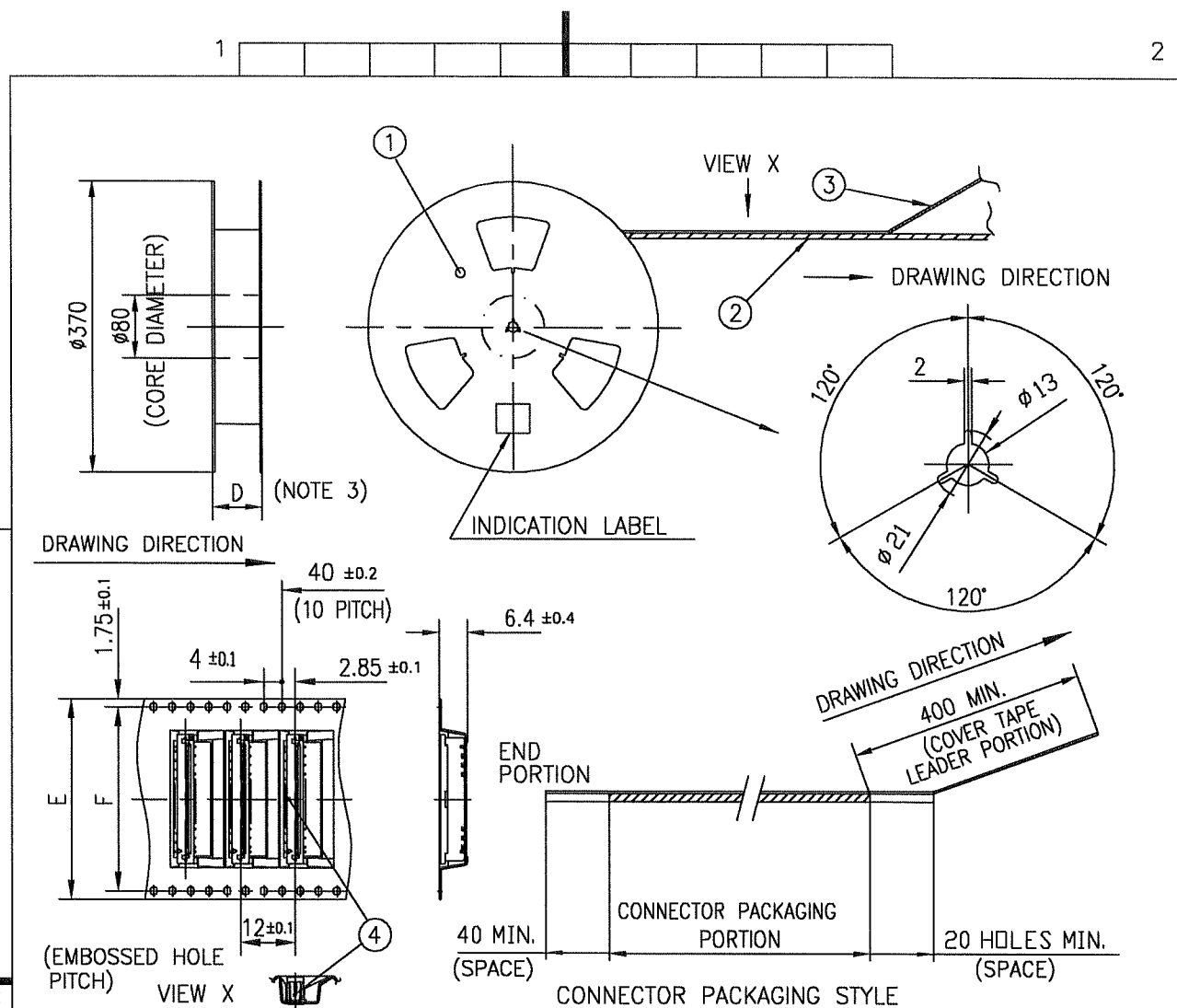
LEAD FREE

## NOTES

1. THIS PRODUCT IS THE CONNECTOR DESIGNED TO TERMINATE FPC/FFC AND COTES WITH AUTOMATIC MOUNTING (SMT).
2. THIS CATALOG NO. INDICATES PLASTIC TAPE PACKAGED CONNECTOR.
3. SEE PART DRAWINGS FOR DIMENSIONS D~F.
4. PLEASE CONSULT US IN CASE OF USING PARTS WITH \* MARK.

mat'l. code				surface 58 / tolerance ISO 406		projection		product family 58SF		CODE JP	
ISO 1302				ISO 1101		mm		title			
tolerances unless otherwise specified				linear		scale X		CAT NO. TABLE FOR PLASTIC TAPE PACKAGED 1mm SPACING SMT CONN. (CAT.No.SFW__S-2ST_AE1LF)			
ltr ecn no dr date				angles		FCJ		dwg no sheet 1 of 1 size			
A J05-0457 H.T 2005-7-19								JSA 96627 A4			
B J05-0547 H.T 2005-8-30								type Product Customer Drawing			
C J06-0430 H.T 2006-10-19											
D J07-0407 H.T 2007-8-9											
sheet index				revision D				Rev. D			
sheet 1											

SC-SFWS 05 JSA96624  
form: A4



PT. NO.	PARTS NAME	CAT. NO.	MATERIAL	Q'TY	NOTE
1	REEL	_____	CARDBOARD	1	COLOR:GRAY
2	PLASTIC (EMBOSSED) TAPE	_____	PET	_____	COLOR:TRANSPARENCY
3	COVER	_____	POLYESTER	_____	COLOR:TRANSPARENCY
4	CONNECTOR	SFW__S-2ST_A_LF	SEE ATTACHED DWG.	1000	_____

# NOTES

- THIS IS PLASTIC TAPE PACKAGED CONNECTOR USED FOR FPC/FFC AND CYPES WITH AUTOMATIC MOUNTING (SMT).
- SEE JIS C 0806 (PACKING OF ELECTRONIC COMPONENTS ON CONTINUOUS TAPES (SURFACE MOUNTING DEVICES)) FOR SHAPE AND DIMENSIONS OF PLASTIC (EMBOSSED) TAPE AND REEL.
- F DIMENSION IS PORTION OF THE CORE.

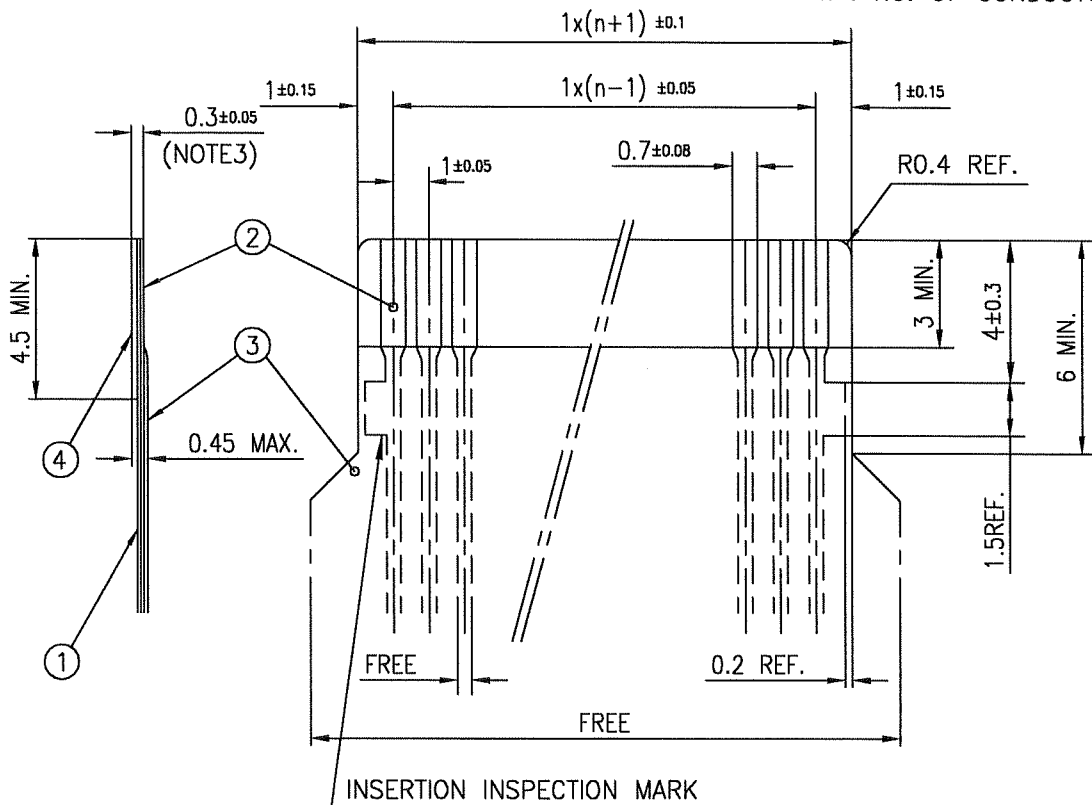
mat'l. code				surface 58 / tolerance ISO 1302 ✓ ISO 406 ISO 1101	projection	product family 58SF	CODE JP
ltr	ecn no	dr	date	tolerances unless otherwise specified	mm	title PLASTIC TAPE PACKAGED 1mm SPACING SMT CONNECTOR (CATA.No.SFW__S-2ST_AE1LF)	
A	J05-0457	H.T	7/19/05	angles linear	mm		
B	J06-0430	H.T	10/19/06	±5'	scale X	dwg no	sheet 1 of 1 size
				dr		JSA 96628	A4
				enr		type Product Customer Drawing	
				chr			
				appd			
sheet index	revision	B					Rev B
	sheet	1					

SC-SFWS 05 JSA96624  
form: A4



## RECOMMENDED CABLE (FPC)

n : NO. OF CONDUCTORS



PT. NO.	DESCRIPTION	MATERIAL	THICKNESS (μm)
1	BASE FILM	POLYIMIDE OR POLYESTER OR EQUIVALENT	25
2	CONDUCTOR	COPPER FOIL(GOLD PLATING)	35
3	OVERLAY	POLYIMIDE OR POLYESTER OR EQUIVALENT	—
4	SUPPORTING TAPE	POLYESTER OR POLYIMIDE OR EQUIVALENT	188

## NOTES

1. NO BURR AT EACH PORTION.
2. NO PEELING IN COMMON USE.
3. TOTAL THICKNESS LIMIT OF EACH MATERIAL (INCLUDING ADHESIVE AGENT) IS SPECIFIED.

mat'l. code				surface 58 / tolerance ISO 1302 ✓ ISO 406 ISO 1101		projection		product family 58SF		CODE JP	
ltr	ecn no	dr	date	tolerances unless otherwise specified		mm		title			
A	J05-0457	H.T	7/19/05			mm		RECOMMENDED CABLE			
B	J06-0430	H.T	10/19/06	angles linear		mm		(CAT.No.SFW__S-2ST__)			
				dr		scale X		dwg no			
				engr		FCI		sheet 1 of 1			
				chr				JSA 96629			
				appd				size A4			
								type Product Customer Drawing			
sheet index		revision sheet		B 1						Rev. B	

## CAT. NO. &amp; DIMENSIONS

(NOTE4)	NO. OF CONTACTS (n)	CAT. NO. (NOTE2)	DIMENSIONS (NOTE3)		
			D MAX.	E ± 0.3	F ± 0.1
	4	SFW4S-2ST_AE5LF	30.4	24	—
	5	SFW5S-2ST_AE5LF	30.4	24	—
	6	SFW6S-2ST_AE5LF	30.4	24	—
*	7	SFW7S-2ST_AE5LF	30.4	24	—
	8	SFW8S-2ST_AE5LF	30.4	24	—
*	9	SFW9S-2ST_AE5LF	30.4	24	—
	10	SFW10S-2ST_AE5LF	30.4	24	—
	11	SFW11S-2ST_AE5LF	30.4	24	—
*	12	SFW12S-2ST_AE5LF	38.4	32	28.4
	13	SFW13S-2ST_AE5LF	38.4	32	28.4
	14	SFW14S-2ST_AE5LF	38.4	32	28.4
	15	SFW15S-2ST_AE5LF	38.4	32	28.4
	16	SFW16S-2ST_AE5LF	50.4	44	40.4
	17	SFW17S-2ST_AE5LF	50.4	44	40.4
*	18	SFW18S-2ST_AE5LF	50.4	44	40.4
*	19	SFW19S-2ST_AE5LF	50.4	44	40.4
	20	SFW20S-2ST_AE5LF	50.4	44	40.4
*	21	SFW21S-2ST_AE5LF	50.4	44	40.4
	22	SFW22S-2ST_AE5LF	50.4	44	40.4
	23	SFW23S-2ST_AE5LF	50.4	44	40.4
	24	SFW24S-2ST_AE5LF	50.4	44	40.4
*	25	SFW25S-2ST_AE5LF	50.4	44	40.4
	26	SFW26S-2ST_AE5LF	50.4	44	40.4
*	27	SFW27S-2ST_AE5LF	62.4	56	52.4
	28	SFW28S-2ST_AE5LF	62.4	56	52.4
	29	SFW29S-2ST_AE5LF	62.4	56	52.4
	30	SFW30S-2ST_AE5LF	62.4	56	52.4
*	31	SFW31S-2ST_AE5LF	62.4	56	52.4
*	32	SFW32S-2ST_AE5LF	62.4	56	52.4

CAT. NO. SFW (n) S - 2 ST A E5 LF

SERIES

NO. OF CONTACTS

STRAIGHT TYPE

FOR FPC / FFC

VARIATION

STM : FOR AUTOMATIC MOUNTING (SMT)  
WITH MOUNTING PLATEST : FOR AUTOMATIC MOUNTING (SMT)  
WITHOUT MOUNTING PLATE

GOLD PLATING

PACKAGE STYLE

LEAD FREE

## NOTES

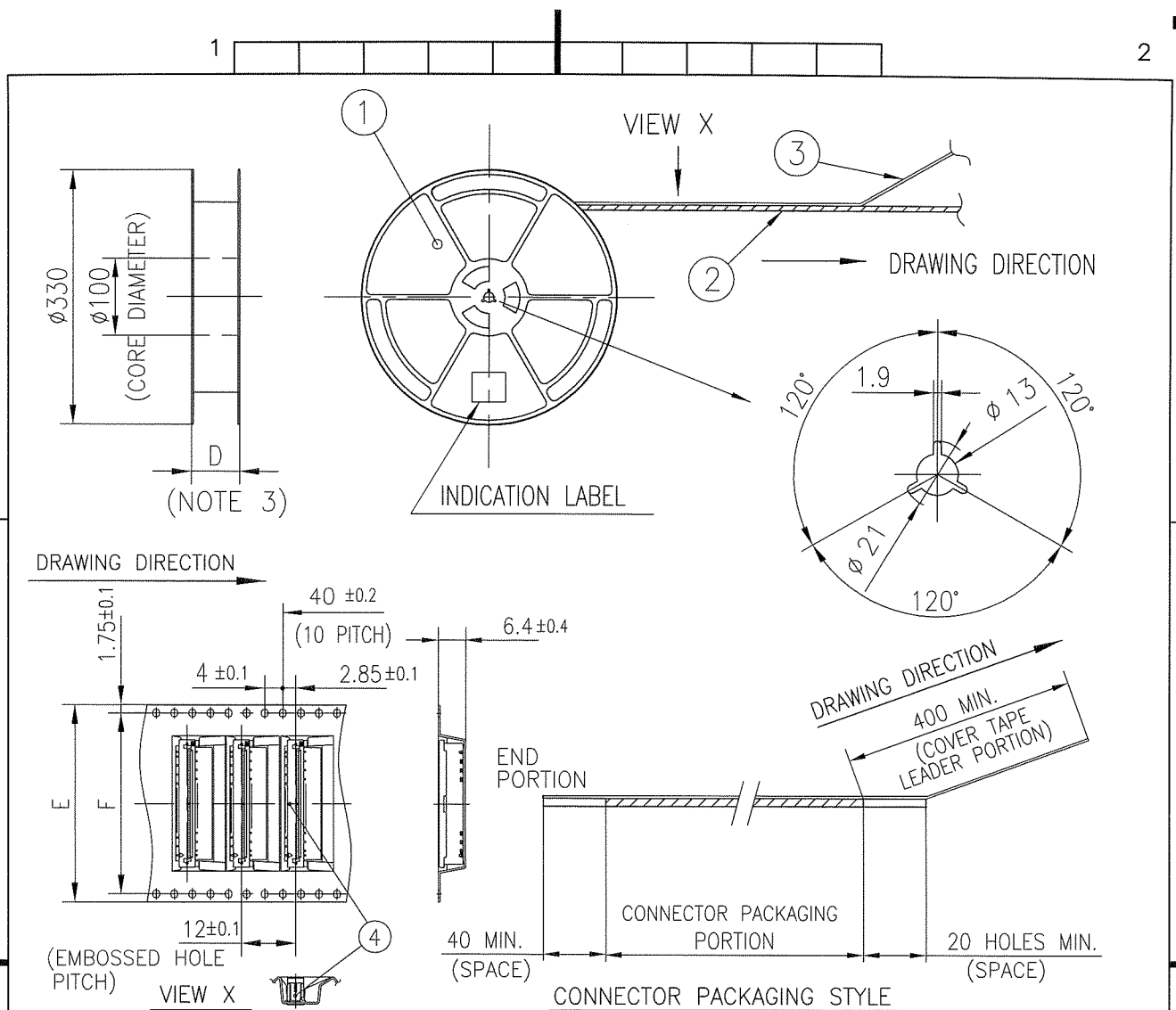
1. THIS PRODUCT IS THE CONNECTOR DESIGNED TO TERMINATE FPC/FFC AND COPE WITH AUTOMATIC MOUNTING (SMT).
2. THIS CATALOG NO. INDICATES PLASTIC TAPE PACKAGED CONNECTOR.
3. SEE PART DRAWINGS FOR DIMENSIONS D~F.
4. PLEASE CONSULT US IN CASE OF USING PARTS WITH \* MARK.

mat'l. code				surface <input checked="" type="checkbox"/> ISO 1302 <input type="checkbox"/> tolerance <input checked="" type="checkbox"/> ISO 406 <input type="checkbox"/> ISO 1101		projection		product family 58SF		CODE JP	
ltr	ecn no	dr	date	tolerances unless otherwise specified		mm		title			
A	J08-0338	H.T	2008-8-13	angles	linear	mm		CAT NO. TABLE FOR PLASTIC TAPE PACKAGED 1mm SPACING SMT CONN. (Cat. No. SFW__S-2ST_AE5LF)			
				dr	engr	chr	appd	dwg no		sheet 1 of 1	size
								JSA 97447			A4
								type Product Customer Drawing			
sheet index	revision	A	1								
Rev. A											

SC-SFWS05 JSA96624 96625 96626 97448  
form: A4

1

2



PT. NO.	PARTS NAME	CAT. NO.	MATERIAL	Q'TY	NOTE
1	REEL	_____	POLYSTYRENE	1	COLOR : WHITE or BLACK
2	PLASTIC (EMBOSSED) TAPE	_____	PET	—	COLOR : TRANSPARENCY
3	COVER	_____	POLYESTER	—	COLOR : TRANSPARENCY
4	CONNECTOR	SFW__S-2ST_ALF	SEE ATTACHED DWG.	900	_____

#### NOTES

- THIS IS PLASTIC TAPE PACKAGED CONNECTOR USED FOR FPC/FFC AND CYPES WITH AUTOMATIC MOUNTING (SMT).
- SEE JIS C 0806 (PACKING OF ELECTRONIC COMPONENTS ON CONTINUOUS TAPES (SURFACE MOUNTING DEVICES)) FOR SHAPE AND DIMENSIONS OF PLASTIC (EMBOSSED) TAPE AND REEL.
- F DIMENSION IS PORTION OF THE CORE.

mat'l. code				surface <input checked="" type="checkbox"/> ISO 1302 <input checked="" type="checkbox"/> tolerance <input checked="" type="checkbox"/> ISO 406 <input checked="" type="checkbox"/> ISO 1101		projection		product family 58SF		CODE JP	
ltr	ecn no	dr	date	tolerances unless otherwise specified				title			
A	J08-0338	H.T	2008-8-13	angles linear		mm		PLASTIC TAPE PACKAGED 1mm SPACING SMT CONNECTOR (Cat. No. SFW__S-2ST_AE5LF)			
				±5°		scale $\propto$		dwg no sheet 1 of 1 size			
				dr		F01		JSA 97448 A4			
				engr				type Product Customer Drawing			
				chr							
				appd							
sheet index	revision	A						Rev. A			
	sheet	1									

SC-SFWS05 JSA97447  
form: A4