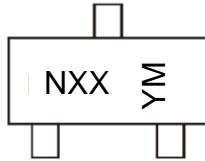


Marking Information

SOT323



NXX = Product Type Marking Code
 YM = Date Code Marking
 Y = Year (ex: D = 2016)
 M = Month (ex: 9 = September)

Date Code Key

Year	2016	2017	2018	2019	2020	2021	2022	2023	2024	2025	2026
Code	D	E	F	G	H	I	J	K	L	M	N

Month	Jan	Feb	Mar	Apr	May	Jun	Jul	Aug	Sep	Oct	Nov	Dec
Code	1	2	3	4	5	6	7	8	9	O	N	D

Absolute Maximum Ratings NPN Section (@T_A = +25°C, unless otherwise specified.)

Characteristic	Symbol	Value	Unit
Supply Voltage <Pin: (3) to (2)>	V _{CC}	50	V
Input Voltage <Pin: (1) to (2)>	V _{IN}	DDTC113ZUA -5 to +10 DDTC123YUA -5 to +12 DDTC123JUA -5 to +12 DDTC143XUA -7 to +20 DDTC143FUA -6 to +30 DDTC143ZUA -5 to +30 DDTC114YUA -6 to +40 DDTC114WUA -10 to +30 DDTC124XUA -10 to +40 DDTC144VUA -15 to +40 DDTC144WUA -10 to +40	V
Output Current	I _O	DDTC113ZUA 100 DDTC123YUA 100 DDTC123JUA 100 DDTC143XUA 100 DDTC143FUA 100 DDTC143ZUA 100 DDTC114YUA 70 DDTC114WUA 100 DDTC124XUA 50 DDTC144VUA 30 DDTC144WUA 30	mA
Output Current	I _C (Max)	100	mA

Thermal Characteristics (@T_A = +25°C, unless otherwise specified.)

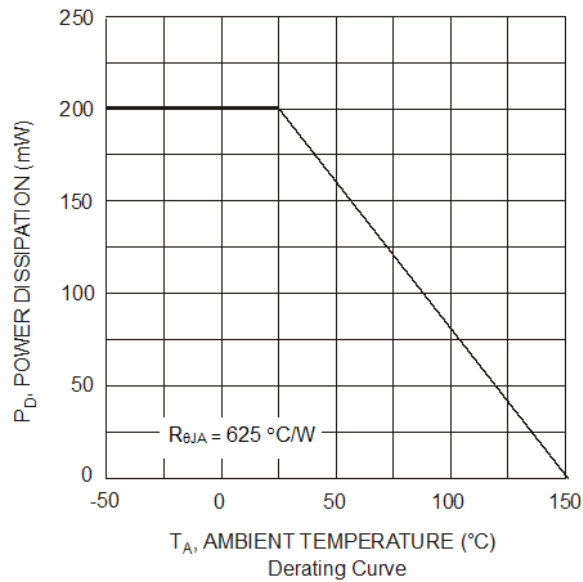
Characteristic	Symbol	Value	Unit
Power Dissipation (Notes 5 & 6)	P _D	200	mW
Thermal Resistance, Junction to Ambient Air (Note 5)	R _{θJA}	625	°C/W
Operating and Storage Temperature Range	T _J , T _{STG}	-55 to +150	°C

Notes: 5. Mounted on FR4 PC Board with minimum recommended pad layout.
 6. 150mW per element must not be exceeded.

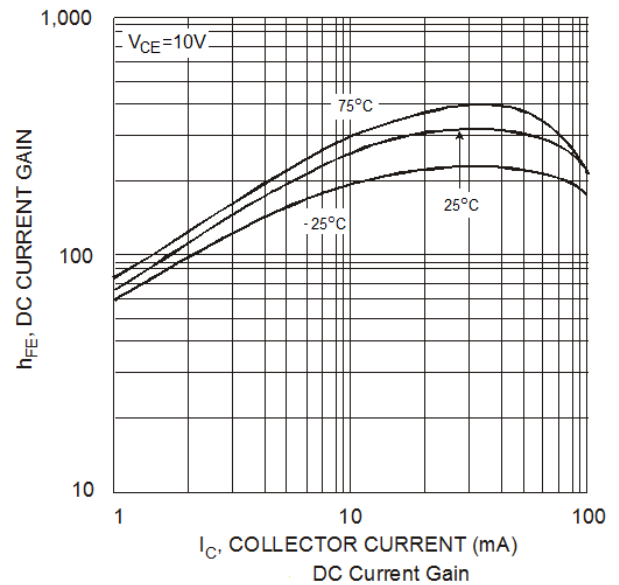
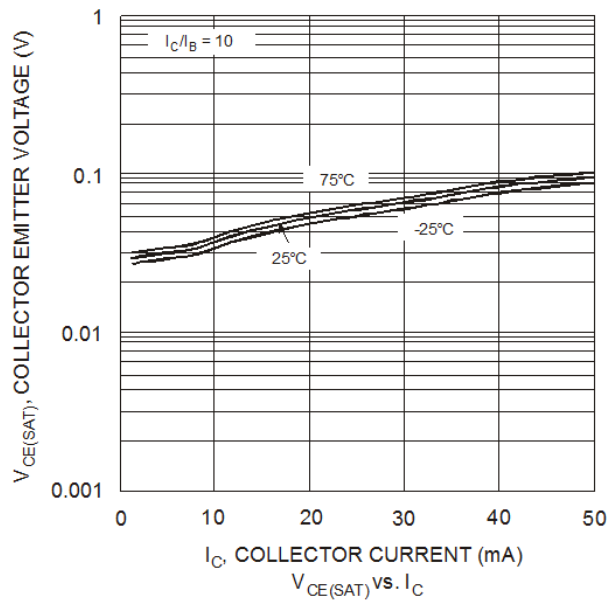
Electrical Characteristics (@T_A = +25°C, unless otherwise specified.)

Characteristic	Symbol	Min	Typ	Max	Unit	Test Condition
Input Voltage	DDTC113ZUA	0.3	—	—	V	V _{CC} = 5V, I _O = 100μA
	DDTC123YUA	0.3				
	DDTC123JUA	0.5				
	DDTC143XUA	0.3				
	DDTC143FUA	0.3				
	DDTC143ZUA	0.5				
	DDTC114YUA	0.3				
	DDTC114WUA	0.8				
	DDTC124XUA	0.4				
	DDTC144VUA	1.0				
	DDTC144WUA	0.8				
	DDTC113ZUA	—	—	3.0		V _O = 0.3V, I _O = 20mA
	DDTC123YUA			3.0		V _O = 0.3V, I _O = 20mA
	DDTC123JUA			1.1		V _O = 0.3V, I _O = 5mA
	DDTC143XUA			2.5		V _O = 0.3V, I _O = 20mA
	DDTC143FUA			1.3		V _O = 0.3V, I _O = 3mA
	DDTC143ZUA			1.3		V _O = 0.3V, I _O = 5mA
	DDTC114YUA			1.4		V _O = 0.3V, I _O = 1mA
	DDTC114WUA			3.0		V _O = 0.3V, I _O = 2mA
	DDTC124XUA			2.5		V _O = 0.3V, I _O = 2mA
	DDTC144VUA			5.0		V _O = 0.3V, I _O = 2mA
	DDTC144WUA			4.0		V _O = 0.3V, I _O = 2mA
Output Voltage	V _{O(ON)}	—	0.1	0.3	V	I _O /I _I = 5mA / 0.25mA DDTC123JUA
						I _O /I _I = 5mA / 0.25mA DDTC143ZUA
						I _O /I _I = 5mA / 0.25mA DDTC114YUA
						I _O /I _I = 10mA / 0.5mA All Others
Input Current	DDTC113ZUA	—	—	7.2	mA	V _I = 5V
	DDTC123YUA			3.8		
	DDTC123JUA			3.6		
	DDTC143XUA			1.8		
	DDTC143FUA			1.8		
	DDTC143ZUA			1.8		
	DDTC114YUA			0.88		
	DDTC114WUA			0.88		
	DDTC124XUA			0.36		
	DDTC144VUA			0.16		
	DDTC144WUA			0.16		
Output Current	I _{O(OFF)}	—	—	0.5	μA	V _{CC} = 50V, V _I = 0V
DC Current Gain	DDTC113ZUA	33	—	—	—	V _O = 5V, I _O = 5mA
	DDTC123YUA	33				V _O = 5V, I _O = 10mA
	DDTC123JUA	80				V _O = 5V, I _O = 10mA
	DDTC143XUA	30				V _O = 5V, I _O = 10mA
	DDTC143FUA	68				V _O = 5V, I _O = 10mA
	DDTC143ZUA	80				V _O = 5V, I _O = 10mA
	DDTC114YUA	68				V _O = 5V, I _O = 5mA
	DDTC114WUA	24				V _O = 5V, I _O = 10mA
	DDTC124XUA	68				V _O = 5V, I _O = 5mA
	DDTC144VUA	33				V _O = 5V, I _O = 5mA
	DDTC144WUA	56				V _O = 5V, I _O = 5mA
Input Resistor (R ₁) Tolerance	ΔR ₁	-30	—	+30	%	—
Resistance Ratio Tolerance	ΔR ₂ /R ₁	-20	—	+20	%	—
Gain-Bandwidth Product	f _T	—	250	—	MHz	V _{CE} = 10V, I _E = 5mA, f = 100MHz

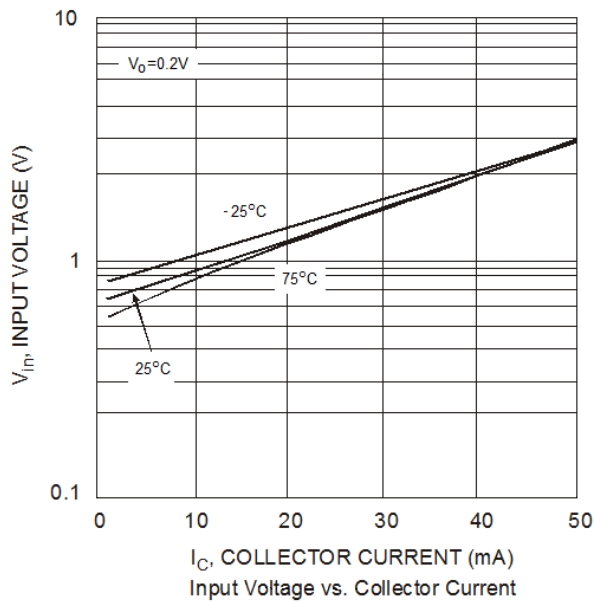
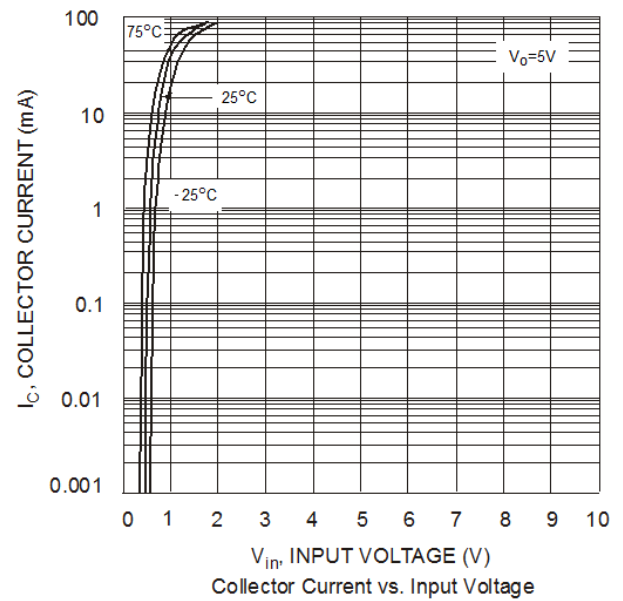
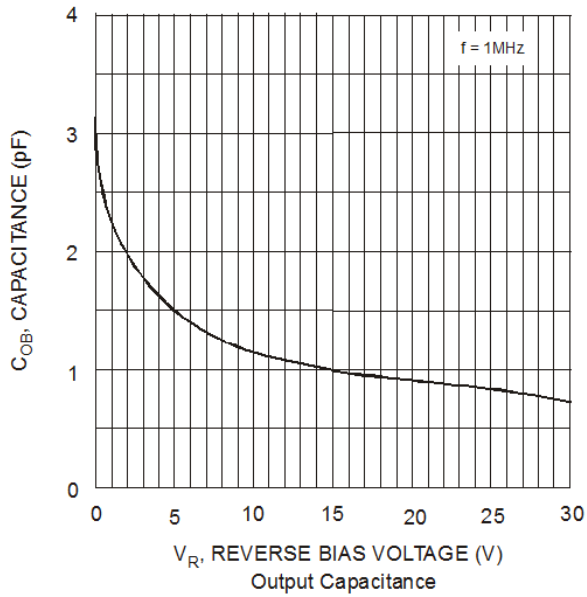
Typical Curves – Total Device



Typical Curves – DDTC123JUA (@ $T_A = +25^{\circ}\text{C}$, unless otherwise specified.)



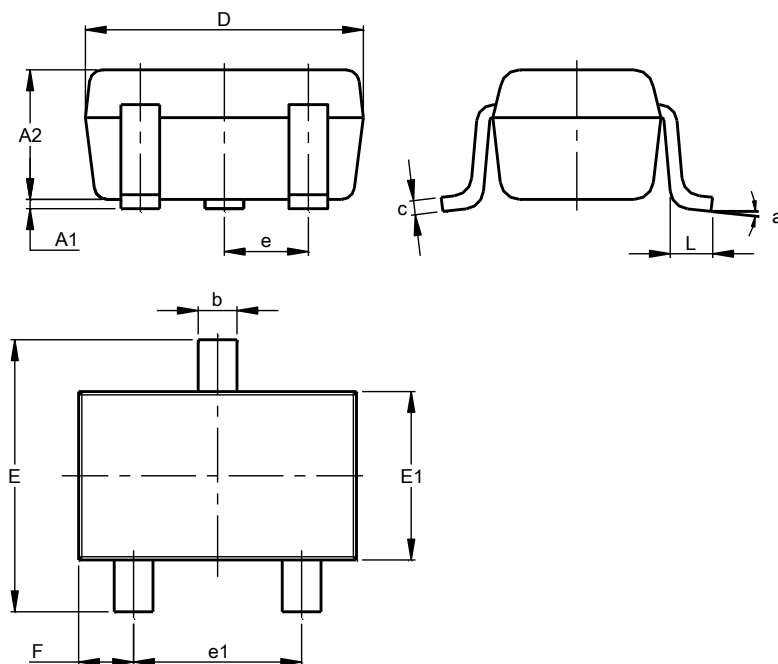
Typical Curves – DDTC123JUA (continued)



Package Outline Dimensions

Please see <http://www.diodes.com/package-outlines.html> for the latest version.

SOT323

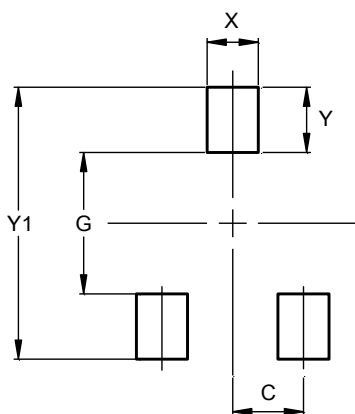


SOT323			
Dim	Min	Max	Typ
A1	0.00	0.10	0.05
A2	0.90	1.00	0.95
b	0.25	0.40	0.30
c	0.10	0.18	0.11
D	1.80	2.20	2.15
E	2.00	2.20	2.10
E1	1.15	1.35	1.30
e	0.650 BSC		
e1	1.20	1.40	1.30
F	0.375	0.475	0.425
L	0.25	0.40	0.30
a	0°	8°	--
All Dimensions in mm			

Suggested Pad Layout

Please see <http://www.diodes.com/package-outlines.html> for the latest version.

SOT323



Dimensions	Value (in mm)
C	0.650
G	1.300
X	0.470
Y	0.600
Y1	2.500

IMPORTANT NOTICE

DIODES INCORPORATED MAKES NO WARRANTY OF ANY KIND, EXPRESS OR IMPLIED, WITH REGARDS TO THIS DOCUMENT, INCLUDING, BUT NOT LIMITED TO, THE IMPLIED WARRANTIES OF MERCHANTABILITY AND FITNESS FOR A PARTICULAR PURPOSE (AND THEIR EQUIVALENTS UNDER THE LAWS OF ANY JURISDICTION).

Diodes Incorporated and its subsidiaries reserve the right to make modifications, enhancements, improvements, corrections or other changes without further notice to this document and any product described herein. Diodes Incorporated does not assume any liability arising out of the application or use of this document or any product described herein; neither does Diodes Incorporated convey any license under its patent or trademark rights, nor the rights of others. Any Customer or user of this document or products described herein in such applications shall assume all risks of such use and will agree to hold Diodes Incorporated and all the companies whose products are represented on Diodes Incorporated website, harmless against all damages.

Diodes Incorporated does not warrant or accept any liability whatsoever in respect of any products purchased through unauthorized sales channel. Should Customers purchase or use Diodes Incorporated products for any unintended or unauthorized application, Customers shall indemnify and hold Diodes Incorporated and its representatives harmless against all claims, damages, expenses, and attorney fees arising out of, directly or indirectly, any claim of personal injury or death associated with such unintended or unauthorized application.

Products described herein may be covered by one or more United States, international or foreign patents pending. Product names and markings noted herein may also be covered by one or more United States, international or foreign trademarks.

This document is written in English but may be translated into multiple languages for reference. Only the English version of this document is the final and determinative format released by Diodes Incorporated.

LIFE SUPPORT

Diodes Incorporated products are specifically not authorized for use as critical components in life support devices or systems without the express written approval of the Chief Executive Officer of Diodes Incorporated. As used herein:

A. Life support devices or systems are devices or systems which:

1. are intended to implant into the body, or
2. support or sustain life and whose failure to perform when properly used in accordance with instructions for use provided in the labeling can be reasonably expected to result in significant injury to the user.

B. A critical component is any component in a life support device or system whose failure to perform can be reasonably expected to cause the failure of the life support device or to affect its safety or effectiveness.

Customers represent that they have all necessary expertise in the safety and regulatory ramifications of their life support devices or systems, and acknowledge and agree that they are solely responsible for all legal, regulatory and safety-related requirements concerning their products and any use of Diodes Incorporated products in such safety-critical, life support devices or systems, notwithstanding any devices- or systems-related information or support that may be provided by Diodes Incorporated. Further, Customers must fully indemnify Diodes Incorporated and its representatives against any damages arising out of the use of Diodes Incorporated products in such safety-critical, life support devices or systems.

Copyright © 2016, Diodes Incorporated

www.diodes.com