

A

B

C

D

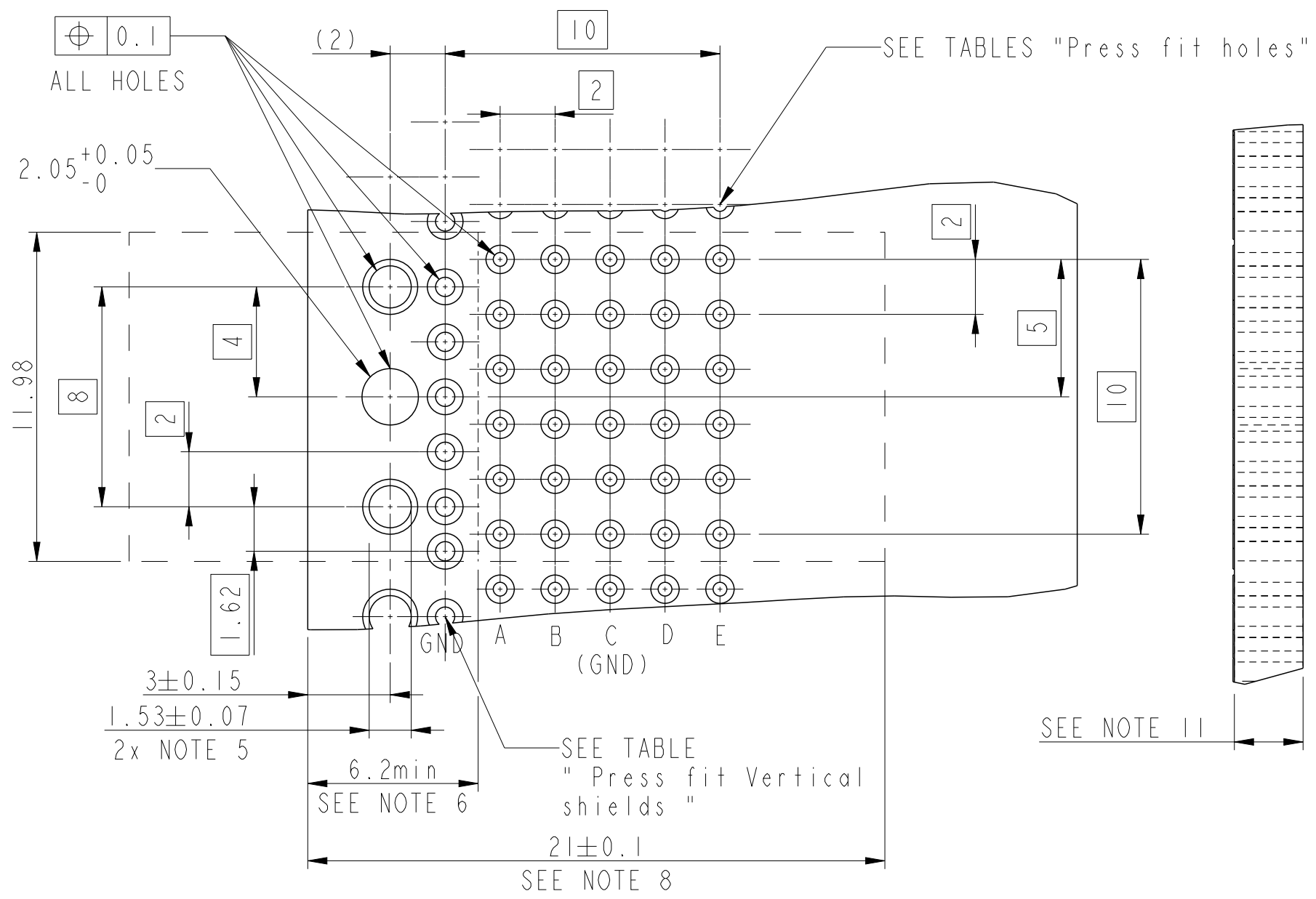
A

B





C

D

	Signal PTH Details				Vertical Shield PTH Details			
	SnPb Finish	Sn Finish	Cu Finish	Immersion Ag Finish	SnPb Finish	Sn Finish	Cu Finish	Immersion Ag Finish
Drilled Hole	0.58 - 0.62 mm	0.58 - 0.62 mm	0.58 - 0.62 mm	0.58 - 0.62 mm	0.81 - 0.86 mm	0.81 - 0.86 mm	0.81 - 0.86 mm	0.81 - 0.86 mm
Copper Plating	25 - 50 μ m	25 - 50 μ m	25 - 50 μ m	25 - 50 μ m	25 μ m MIN	25 μ m MIN	25 μ m MIN	25 μ m MIN
SnPb Plating	5 - 15 μ m	-----	-----	-----	5 - 15 μ m	-----	-----	-----
Sn Plating	-----	0.8 - 1.2 μ m	-----	-----	-----	0.8 - 1.2 μ m	-----	-----
Immersion Ag plating	-----	-----	-----	0.2 - 0.6 μ m	-----	-----	-----	0.2 - 0.6 μ m
Finished Hole Dia	0.45 - 0.55 mm	0.46 - 0.55 mm	0.48 - 0.57 mm	0.48 - 0.57 mm	0.65 - 0.80 mm	0.65 - 0.80 mm	0.71 - 0.81 mm	0.71 - 0.81 mm

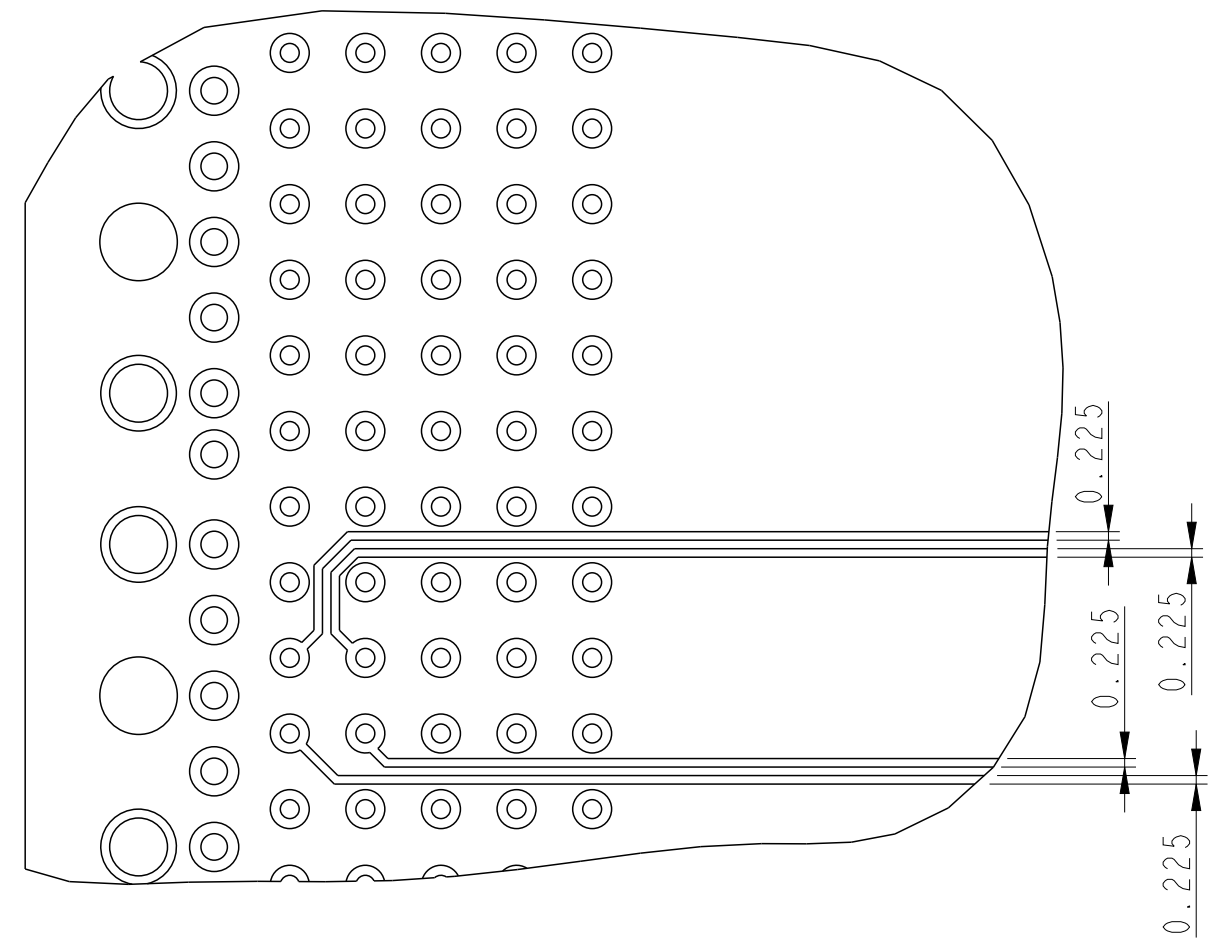


RECOMMENDED PCB HOLE PATTERN - COMPONENT SIDE

spec ref		-		dr		P-Matthew Nebu		2011/05/20		projection		mm		size		A3		scale		5:1					
tolerance std		TOLERANCES UNLESS OTHERWISE SPECIFIED		eng		Stalin Alosius		2014/06/24						ecn no		ELX-17993-1		rel level		Released					
ISO 406																									
ISO 1101																									
surface				linear		0.X		±0.3				title		5x6 Receptacle		Signal Assembly		dwg no		52057c		rev		K	
ISO 1302																									
angular				0°		±2°																			
				www.fci.com		cat. no.				Product - Customer Drw		sheet 2 of 3													

NOTES:

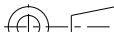

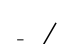

- 1. BODY MATERIAL: LIQUID CRYSTAL POLYMER
30% GLASS FILLED
FLAME RETARDENT ACC. UL 94-V0
- 2. METAL PARTS: COPPER ALLOY
- 3. PLATING ON PRESS FIT AREA
52057-X02 IS SnPb
52057-X02LF IS Sn (LEAD FREE)
- 4. INDICATED HOLE IS UNPLATED.
- 5. 1.53 mm DIA HOLES (2) AT 8.00 CENTERS
ARE FOR GROUND
- 6. AVOID TRACES ON TOP OF BOARD DUE TO
EXPOSED GROUND SHIELD.
- 7. UNDERPLATING FOR SHIELDS AND SIGNAL
CONTACTS IS 1.3µm Ni MINIMUM.
- 8. COMPONENT KEEP OUT ZONE FOR PRESS BLOCK.
- 9. PRODUCT MARKING: DATE AND LOT CODE.
- 10. SEE GS-20-017 FOR APPLICATION TO PCB.
- 11. PCB THICKNESS 1.3 TO 2.5 mm
- 12. SEE PRODUCT SPECIFICATION GS-12-184 FOR
PRODUCT PERFORMANCE CHARACTERISTICS.
- 13. FOR LEAD FREE PART NUMBERS, ADD "LF" SUFFIX
- 14. THE PRODUCT (LF) MEETS EUROPEAN UNION DIRECTIVES
AND OTHER COUNTRY REGULATIONS AS DESCRIBED IN
GS-22-008



RECOMMENDED ROUTING AND TRACE DIMENSIONS
SCALE 5:1



Copyright FCI.

spec ref -				dr P-Mathew Nebu 2011/05/20		projection 	mm 	size A3	scale 5:1
tolerance std				eng Stalin Alosius 2014/06/24				ecn no ELX-17993-1	
ISO 406 ISO 1101				chr - -				rel level Released	
TOLERANCES UNLESS OTHERWISE SPECIFIED				appr K-Paul Biju 2014/06/24		product family METRAL 4000			
surface  ISO 1302	linear	0.X	±0.3		title 5x6 Receptacle Signal Assembly			dwg no 52057c	rev K
		0.XX	±0.1						
		0.XXX	±0.05						
	angular	0°	±2°		www.fci.com	cat. no.			