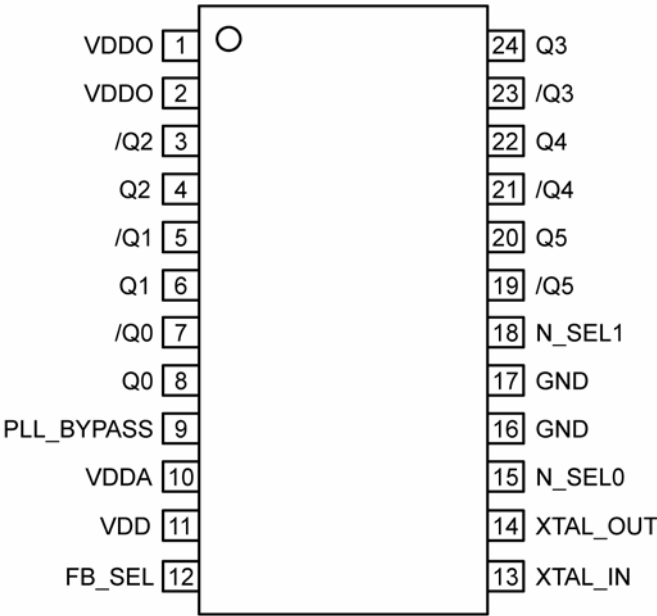


Ordering Information^(1, 2)

| Part Number | Marking | Shipping | Junction Temperature Range | Package |
|-------------|---------|-------------------|----------------------------|-------------------|
| SM843256KA | 843256 | Tube, Tape & Reel | −40° to +85°C | 24-Pin TSSOP EPAD |

- Notes:
- 1. Devices are Green, RoHS, and PFOS Compliant.
 - 2. Lead finish is 100% matte tin.

Pin Configuration



24-Pin TSSOP EPAD
(Top View)

Pin Description

| Pin Number | Pin Name | Pin Type | Pin Level | Pin Function |
|------------|------------------|----------|--------------|---|
| 1, 2 | V _{DDO} | PWR | | 2.5V or 3.3V Power Supply |
| 3, 4 | /Q2, Q2 | O, (DIF) | LVPECL | Differential Clock Output |
| 5, 6 | /Q1, Q1 | O, (DIF) | LVPECL | Differential Clock Output |
| 7, 8 | /Q0, Q0 | O, (DIF) | LVPECL | Differential Clock Output |
| 9 | PLL_BYPASS | I, (SE) | LVC MOS | Pull-Up 45k, Single-Ended Input Select Pin. Logic (0) = PLL Output Logic (1) = Xtal Reference |
| 10 | V _{DDA} | PWR | | Analog 3.3V or 2.5V Power Supply |
| 11 | V _{DD} | PWR | | 3.3V or 2.5V Power Supply |
| 12 | FB_SEL | I, (SE) | LVC MOS | Pull-Down 45k, Single-Ended Input Select Pin |
| 13 | XTAL_IN | I, (SE) | 12pF crystal | Crystal Reference Input, no load caps needed. |
| 14 | XTAL_OUT | O, (SE) | 12pF crystal | Crystal Reference Output, no load caps needed. |
| 15 | N_SEL0 | I, (SE) | LVC MOS | Pull-Up 45k, Single-Ended Input Select Pin |
| 16, 17 | GND | PWR | | Ground |
| 18 | N_SEL1 | I, (SE) | LVC MOS | Pull-Up 45k, Single-Ended Input Select Pin |
| 19, 20 | /Q5, Q5 | O, (DIF) | LVPECL | Differential Clock Output |
| 21, 22 | /Q4, Q4 | O, (DIF) | LVPECL | Differential Clock Output |
| 23, 24 | /Q3, Q3 | O, (DIF) | LVPECL | Differential Clock Output |

Input and Output Frequency Table

| XTAL (MHz) | FB_SEL | N_SEL1 | N_SEL0 | Outputs (MHz) | Application |
|------------|--------|--------|--------|---------------|---|
| 24 | 0 | 0 | 0 | 600 | - |
| 24 | 0 | 0 | 1 | 300 | - |
| 24 | 0 | 1 | 0 | 150 | SAS/SATA |
| 24 | 0 | 1 | 1 | 120 | - |
| 25 | 0 | 0 | 0 | 625 | 10 Gigabit Ethernet |
| 25 | 0 | 0 | 1 | 312.50 | 10 Gigabit Ethernet |
| 25 | 0 | 1 | 0 | 156.25 | 10 Gigabit Ethernet |
| 25 | 0 | 1 | 1 | 125 | Gigabit Ethernet/Infiniband/PCI/PCI-E/PCI-X |
| 18.75 | 1 | 0 | 0 | 600 | - |
| 18.75 | 1 | 0 | 1 | 300 | - |
| 18.75 | 1 | 1 | 0 | 150 | SAS/SATA |
| 18.75 | 1 | 1 | 1 | 75 | SAS/SATA |
| 19.44 | 1 | 0 | 0 | 622.08 | 10 Gigabit Ethernet/SONET |
| 19.44 | 1 | 0 | 1 | 311.04 | SONET |
| 19.44 | 1 | 1 | 0 | 155.52 | SONET |
| 19.44 | 1 | 1 | 1 | 77.76 | SONET |
| 19.53125 | 1 | 0 | 0 | 625 | 10 Gigabit Ethernet |
| 19.53125 | 1 | 0 | 1 | 312.5 | 10 Gigabit Ethernet |
| 19.53125 | 1 | 1 | 0 | 156.25 | 10 Gigabit Ethernet |
| 19.53125 | 1 | 1 | 1 | 78.125 | 10 Gigabit Ethernet |

Absolute Maximum Ratings⁽¹⁾

| | |
|---|-------------------------|
| Supply Voltage (V_{DDA} , V_{DD} , V_{DDO}) | +4.6V |
| Input Voltage (V_{IN}) | -0.50V to $V_{DD}+0.5V$ |
| LVPECL Output Current (I_{OUT}) | |
| Continuous | 50mA |
| Surge | 100mA |
| Lead Temperature (soldering, 20sec.) | 260°C |
| Case Temperature | 115°C |
| Storage Temperature (T_s) | -65°C to +150°C |

Operating Ratings⁽²⁾

| | |
|--|--------------------|
| Supply Voltage (V_{DDO}) | +2.375V to +3.465V |
| Supply Voltage (V_{DD} , V_{DDA}) | +2.375V to +3.465V |
| Ambient Temperature (T_A) | -40°C to +85°C |
| Junction Thermal Resistance ⁽³⁾ | |
| TSSOP (θ_{JA})(Still Air) | 32°C/W |

DC Electrical Characteristics⁽⁴⁾

$V_{DDA} = V_{DD} = 3.3V \pm 5\%$ or $2.5V \pm 5\%$, $V_{DDO} = 2.5V \pm 5\%$, $T_A = -40^\circ\text{C}$ to $+85^\circ\text{C}$, unless noted.

| Symbol | Parameter | Condition | Min | Typ | Max | Units |
|-------------------|------------------------|------------------------------|-------|-----|-------|-------|
| V_{DDO} | 2.5V Operating Voltage | | 2.375 | 2.5 | 2.625 | V |
| V_{DDA}, V_{DD} | 3.3V Operating Voltage | | 2.375 | 3.3 | 3.465 | V |
| I_{DDA} | Analog Supply Range | $F_{OUT} = 156.25\text{MHz}$ | | 55 | 65 | mA |
| | | $F_{OUT} = 625.00\text{MHz}$ | | 56 | | |
| I_{DD} | Core Supply Current | $F_{OUT} = 156.25\text{MHz}$ | | 13 | 17 | mA |
| | | $F_{OUT} = 625.00\text{MHz}$ | | 13 | | |
| I_{DDO} | I/O Supply Range | $F_{OUT} = 156.25\text{MHz}$ | | 235 | TBD | mA |
| | | $F_{OUT} = 625.00\text{MHz}$ | | 330 | | |

$V_{DDA} = V_{DD} = V_{DDO} = 3.3V \pm 5\%$, $T_A = -40^\circ\text{C}$ to $+85^\circ\text{C}$, unless noted.

| Symbol | Parameter | Condition | Min | Typ | Max | Units |
|--|------------------------|------------------------------|-------|-----|-------|-------|
| V_{DDA} , V_{DD} , V_{DDO} | 3.3V Operating Voltage | | 3.135 | 3.3 | 3.465 | V |
| I_{DDA} | Analog Supply Range | $F_{OUT} = 156.25\text{MHz}$ | | 55 | 65 | mA |
| | | $F_{OUT} = 625.00\text{MHz}$ | | 56 | | |
| I_{DD} | Core Supply Current | $F_{OUT} = 156.25\text{MHz}$ | | 13 | 17 | mA |
| | | $F_{OUT} = 625.00\text{MHz}$ | | 13 | | |
| I_{DDO} | I/O Supply Range | $F_{OUT} = 156.25\text{MHz}$ | | 256 | 282 | mA |
| | | $F_{OUT} = 625.00\text{MHz}$ | | 366 | | |

Notes:

1. Permanent device damage may occur if absolute maximum ratings are exceeded. This is a stress rating only and functional operation is not implied at conditions other than those detailed in the operational sections of this data sheet. Exposure to absolute maximum rating conditions for extended periods may affect device reliability.
2. The data sheet limits are not guaranteed if the device is operated beyond the operating ratings.
3. Package thermal resistance assumes exposed pad is soldered (or equivalent) to the devices most negative potential on the PCB.
4. The circuit is designed to meet the DC specifications shown in the above table after thermal equilibrium has been established.

LVPECL DC Electrical Characteristics^(5, 6)

$V_{DDA} = V_{DD} = 3.3V \pm 5\%$ or $2.5V \pm 5\%$, $V_{DDO} = 2.5V$ or $3.3V \pm 5\%$, $T_A = -40^{\circ}C$ to $+85^{\circ}C$, unless noted.

| Symbol | Parameter | Condition | Min | Typ | Max | Units |
|-------------|-----------------------------------|----------------------------|---------------------|--------------------|---------------------|-------|
| V_{OH} | Output High Voltage | 50Ω to $V_{DDO}-2V$ | V_{DDO} -1.145 | V_{DDO} -0.97 | V_{DDO} -0.845 | V |
| V_{OL} | Output Low Voltage | 50Ω to $V_{DDO}-2V$ | V_{DDO} -1.945 | V_{DDO} -1.77 | V_{DDO} -1.645 | V |
| V_{SWING} | Peak-to-Peak Output Voltage Swing | Figure 1 | 0.6 | 0.8 | 1.0 | V |

LVC MOS DC Electrical Characteristics⁽⁶⁾

$V_{DDA} = V_{DD} = 3.3V \pm 5\%$ or $2.5V \pm 5\%$, $V_{DDO} = 2.5V$ or $3.3V \pm 5\%$, $T_A = -40^{\circ}C$ to $+85^{\circ}C$, unless noted.

| Symbol | Parameter | Condition | Min | Typ | Max | Units |
|----------|--|-----------------------------------|------|-----|------------------|---------|
| V_{IH} | Input High Voltage | | 2 | | V_{DD} +0.3 | V |
| V_{IL} | Input Low Voltage | | -0.3 | | 0.8 | V |
| I_{IH} | Input High Current (FB_SEL) | $V_{DD} = V_{IN} = 3.465V$ | | | 150 | μA |
| I_{IH} | Input High Current (PLL_BYPASS), (N_SEL0), (NSEL1) | $V_{DD} = V_{IN} = 3.465V$ | | | 5 | μA |
| I_{IL} | Input Low Current (FB_SEL) | $V_{DD} = 3.465V$, $V_{IN} = 0V$ | -5 | | | μA |
| I_{IL} | Input Low Current (PLL_BYPASS), (N_SEL0), (NSEL1) | $V_{DD} = 3.465V$, $V_{IN} = 0V$ | -150 | | | μA |

AC Electrical Characteristics⁽⁷⁾

$V_{DDA} = V_{DD} = 3.3V \pm 5\%$ or $2.5V \pm 5\%$, $V_{DDO} = 2.5V$ or $3.3V \pm 5\%$, $T_A = -40^{\circ}C$ to $+85^{\circ}C$, unless noted.

| Symbol | Parameter | Condition | Min | Typ | Max | Units |
|----------------------|--|--------------------------------------|-----|-----|-----|-------|
| F_{OUT} | Output Frequency | Refer to Frequency Table | 75 | | 625 | MHz |
| T_R/T_F | LVPECL Output Rise/Fall Time | 20% – 80% | 100 | 175 | 350 | ps |
| ODC | Output Duty Cycle | | 46 | 50 | 54 | % |
| T_{SKEW} | Output-to-Output Skew | Note 8 | | | 45 | ps |
| T_{LOCK} | PLL Lock Time | | | | 20 | ms |
| $T_{jit}(\emptyset)$ | RMS Phase Jitter (Output = 156.25 MHz) | Integration Range (12kHz – 20MHz) | | 251 | | fs |
| | | Integration Range (1.875MHz – 20MHz) | | 80 | | fs |

Notes:

- See Figure 4 for load test circuit example.
- The circuit is designed to meet the DC specifications shown in the above table(s) after thermal equilibrium has been established.
- The circuit is designed to meet the AC specifications shown in the above table(s) after thermal equilibrium has been established.
- Defined as skew between outputs at the same supply voltage and with equal load conditions; Measured at the output differential crossing points.

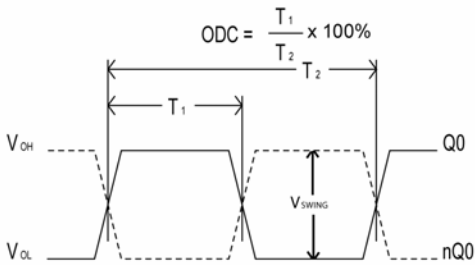
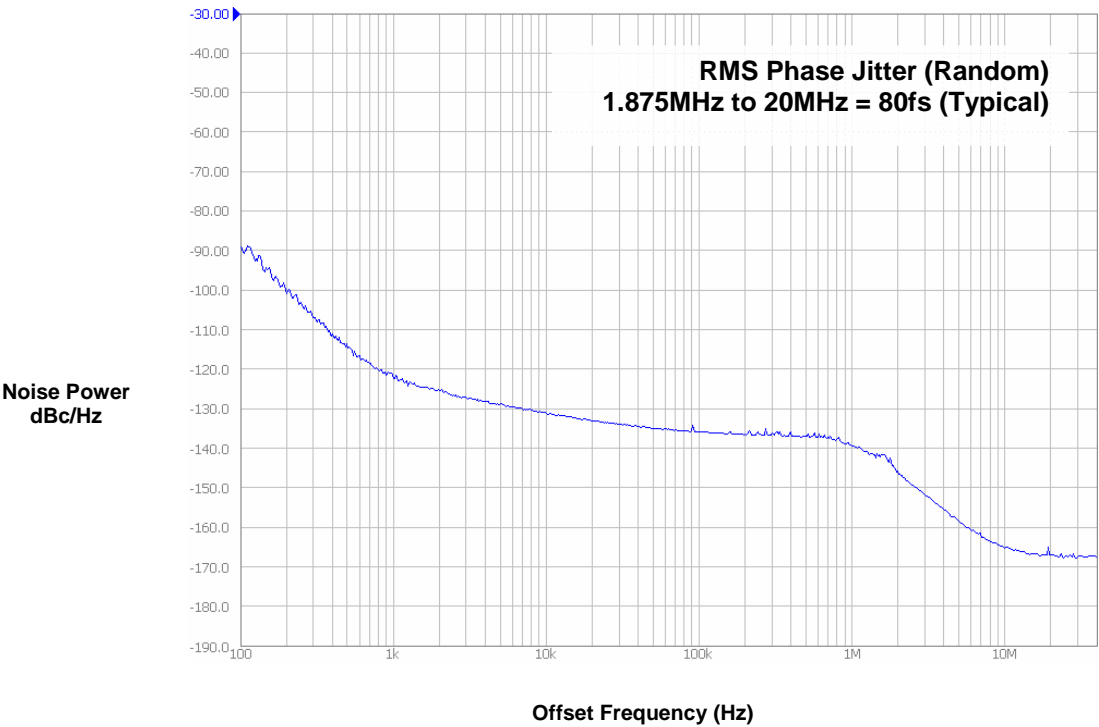


Figure 1. Duty Cycle Timing

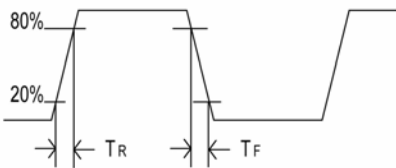


Figure 2. All Outputs Rise/Fall Time

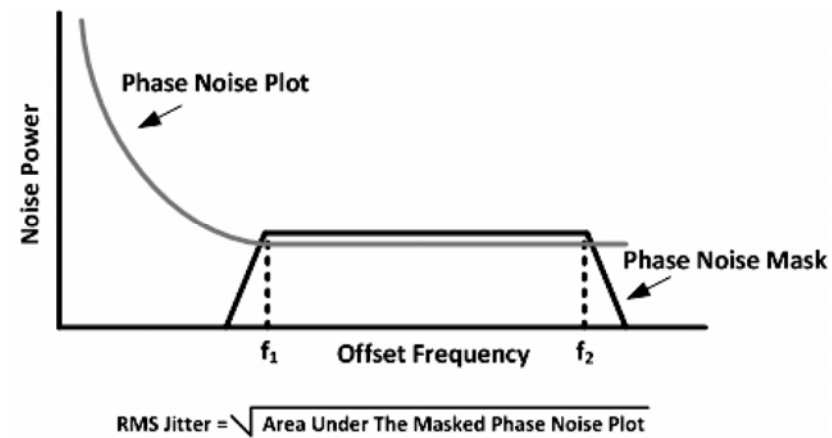


Figure 3. RMS Phase Noise/Jitter

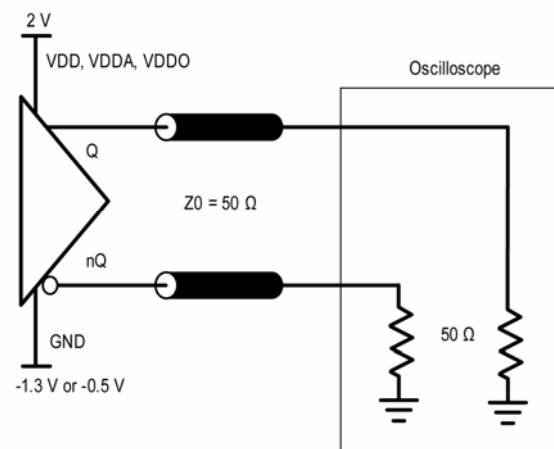


Figure 4. LVPECL Output Load and Test Circuit

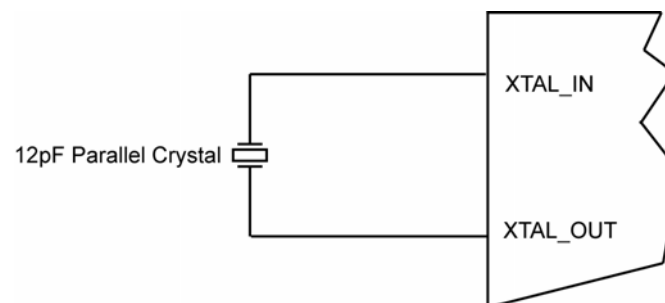
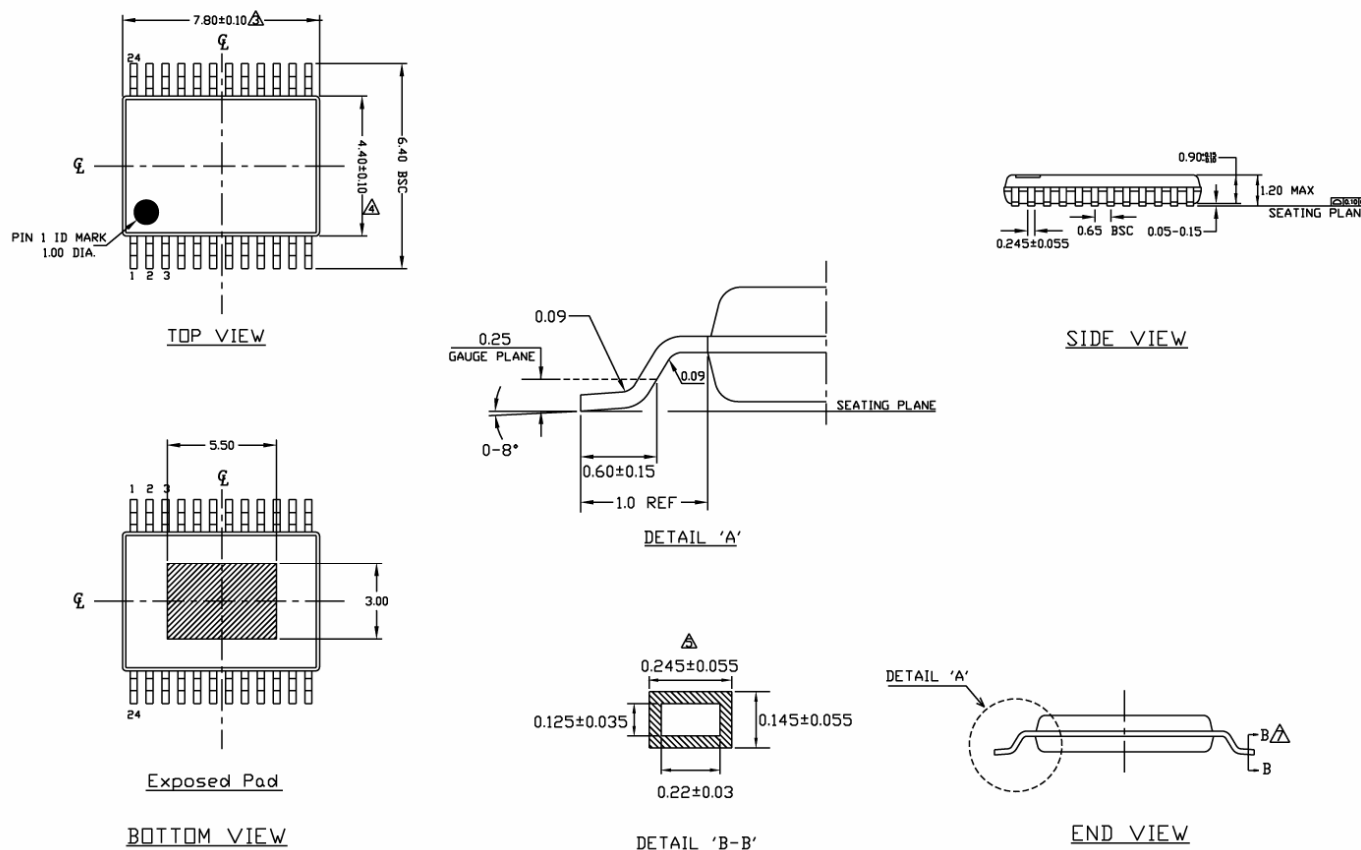


Figure 5. Crystal Input Interface

Package Information



NOTES:

1. DIMENSIONS ARE IN MM.
2. DIMENSIONS AND TOLERANCES PER ANSI Y14.5M-1994.
3. DIMENSION 'D' DOES NOT INCLUDE MOLD FLASH, PROTRUSIONS OR GATE BURR.
4. DIMENSION 'E1' DOES NOT INCLUDE INTERNAL FLASH OR PROTRUSION.
5. DIMENSION 'b' DOES NOT INCLUDE DAMBAR PROTRUSION.
6. "N" IS THE MAXIMUM NUMBER OF LEAD TERMINAL POSITIONS FOR THE SPECIFIED PACKAGE LENGTH.
7. CROSS SECTION B-B TO BE DETERMINED AT 0.10 TO 0.25mm FROM THE LEAD TIP

24-pin EPAD TSSOP

MICREL, INC. 2180 FORTUNE DRIVE SAN JOSE, CA 95131 USA
 TEL +1 (408) 944-0800 FAX +1 (408) 474-1000 WEB <http://www.micrel.com>

The information furnished by Micrel in this data sheet is believed to be accurate and reliable. However, no responsibility is assumed by Micrel for its use. Micrel reserves the right to change circuitry and specifications at any time without notification to the customer.

Micrel Products are not designed or authorized for use as components in life support appliances, devices or systems where malfunction of a product can reasonably be expected to result in personal injury. Life support devices or systems are devices or systems that (a) are intended for surgical implant into the body or (b) support or sustain life, and whose failure to perform can be reasonably expected to result in a significant injury to the user. A Purchaser's use or sale of Micrel Products for use in life support appliances, devices or systems is a Purchaser's own risk and Purchaser agrees to fully indemnify Micrel for any damages resulting from such use or sale.