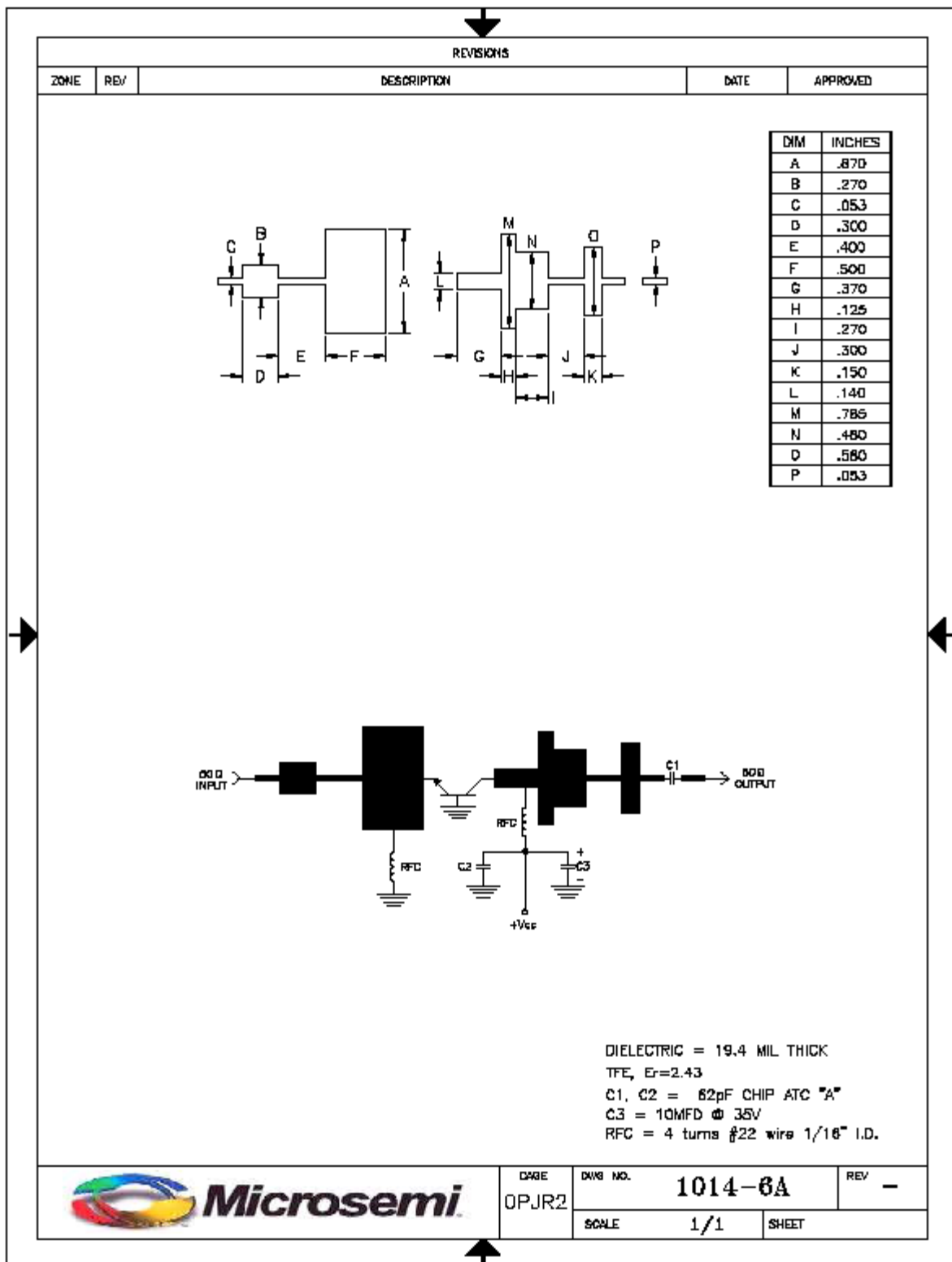
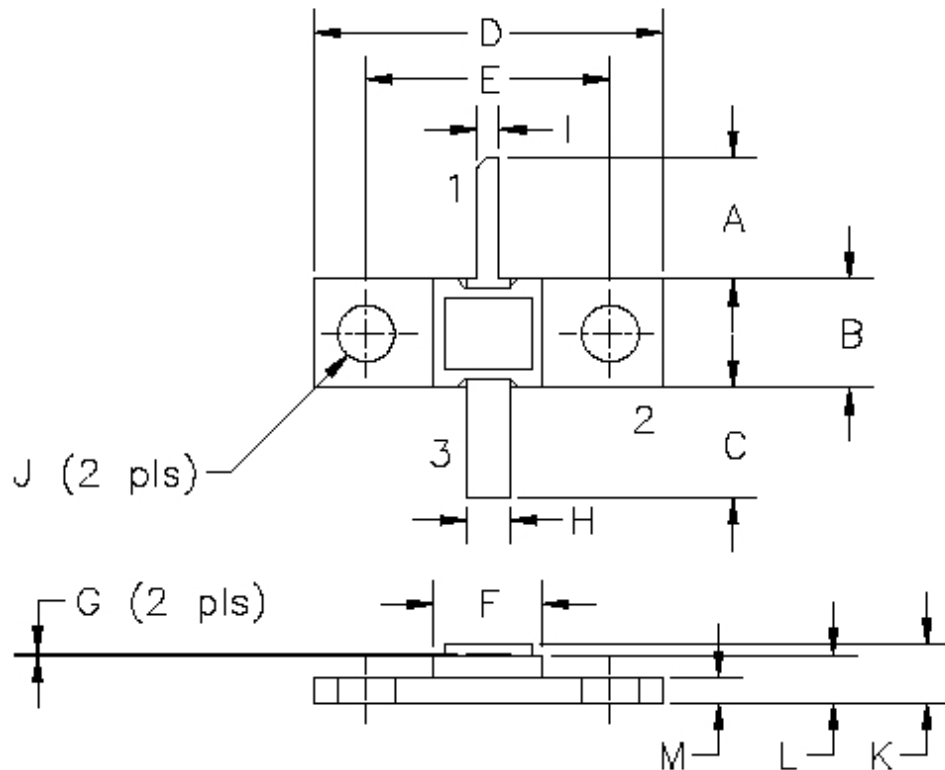




1014-6A

Test Circuit





DIM	MILLIMETER	±TOL	INCHES	±TOL
A	9.53	.64	.375	.025
B	6.35	.13	.250	.005
C	9.53	.64	.375	.025
D	20.83	.25	.820	.010
E	14.48	.13	.570	.005
F	6.35	.13	.250	.005
G	0.10	.05	.004	.002
H	2.54	.13	.100	.005
I	1.27	.13	.050	.005
J	3.30 DIA	.13	.130 DIA	.005
K	3.43	.25	.135	.010
L	2.79	.20	.110	.008
M	1.52	.13	.060	.005

STYLE 1:
 PIN 1 = COLLECTOR
 2 = BASE
 3 = EMITTER

STYLE 2:
 PIN 1 = COLLECTOR
 2 = EMITTER
 3 = BASE

