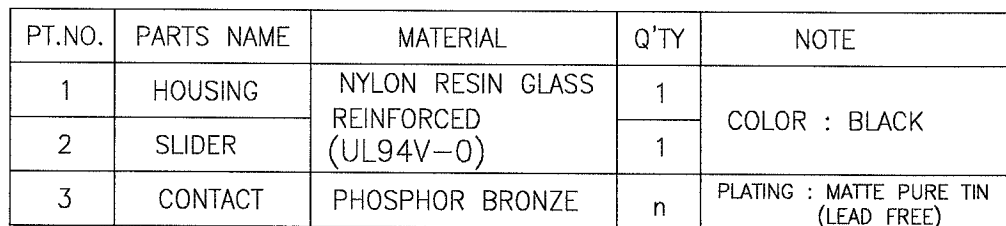
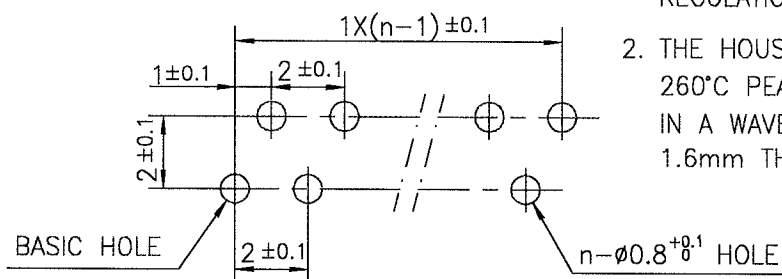




n : NO. OF CONTACTS

THICKNESS : 0.8~1.6
HOLE PATTERN (COMPONENT SIDE)



1. THIS PRODUCT MEETS EUROPEAN UNION DIRECTIVES AND OTHER COUNTRY REGULATIONS AS DESCRIBED IN GS-22-008
2. THE HOUSING WILL WITHSTAND EXPOSURE TO 260°C PEAK TEMPERATURE FOR 10 SECONDS IN A WAVE SOLDER APPLICATION WITH A 1.6mm THICK CIRCUIT BOARD.

SHEET INDEX	ISSUE	B																
	SH NO.	1																
TOLERANCES UNLESS OTHERWISE SPECIFIED			DR <i>1/2" max</i>			DATE <i>10/21/85</i>			CUSTOMER CDPY			TITLE 1mm SPACING CONNECTOR (Cat. No. SLW__R-1C7LF)						
LINEAR	±0.3		ENGR <i>H. H. H. H. H.</i>			10/21/85			 THIRD ANGLE PROJ									
			CHK <i>H. H. H. H. H.</i>			10/21/85												
ANGLES			APPD <i>S. O. H. H. H.</i>			11/1/85			UNIT $\frac{\text{MM}}{\text{INCH}}$			PRODUCT FAMILY 58JF					CODE JP	
DO NOT SCALE PRINT			THIS INFORMATION IS CONFIDENTIAL AND IS DISCLOSED TO YOU ON CONDITION THAT NO FURTHER DISCLOSURE IS MADE BY YOU TO OTHER THAN FCI PERSONNEL WITHOUT WRITTEN AUTHORIZATION FROM FCI JAPAN K.K.											SCALE —	SIZE A	DWG. NO. JSA 96302	REV B	SHEET OF

TOLERANCES UNLESS OTHERWISE SPECIFIED: ± 0.3					REVISIONS				
REV	DESCRIPTION	ECN	BY	DATE					
A	Released	J05-0079	H.T	'05/2/18					
B	Added note	J05-0501	H.T	'05/8/4					

n : NO. OF CONTACTS

Top View Dimensions: 0.5 REF., B, 4 REF., 2, 1, 3.6 REF., 1 REF., 0.35 REF., 3, NO.1 CONTACT SIDE, 2 REF., 0.87 REF.

Side View Dimensions: 5.5, 3 ± 0.5 , 20° REF., 1.5 REF., 4 REF., INSERTION DEPTH, CONDUCTIVE SIDE, 0.87 REF.

PT.NO.	PARTS NAME	MATERIAL	Q'TY	NOTE
1	HOUSING	NYLON RESIN GLASS REINFORCED (UL 94V-0)	1	COLOR : BLACK
2	SLIDER		1	
3	CONTACT	PHOSPHOR BRONZE	n	PLATING : MATTE PURE TIN (LEAD FREE)

RECOMMENDED PC BOARD
THICKNESS : 0.8~1.6
HOLE PATTERN (COMPONENT SIDE)

BASIC HOLE: 1 ± 0.1 , 2 ± 0.1 , 2 ± 0.1 , 2 ± 0.1 , $1 \times (n-1) \pm 0.1$, $n - \phi 0.8 \pm 0.1$ HOLE

THIS PRODUCT MEETS EUROPEAN UNION DIRECTIVES AND OTHER COUNTRY REGULATIONS AS DESCRIBED IN GS-22-008.

THE HOUSING WILL WITHSTAND EXPOSURE TO 260 DEGREE C PEAK TEMPERATURE FOR 10 SECONDS IN A WAVE SOLDER APPLICATION WITH A 1.6mm MINIMUM THICK CIRCUIT BOARD.

SHEET INDEX	ISSUE	B										
SH NO.	1											
TOLERANCES UNLESS OTHERWISE SPECIFIED		DR	<i>[Signature]</i>		DATE	8/4/05		CUSTOMER COPY				
LINEAR		ENGR	<i>[Signature]</i>		DATE	8/4/05		THIRD ANGLE PROJ				
		CHK	<i>[Signature]</i>		DATE	8/4/05						
		APPD	<i>[Signature]</i>		DATE	8/4/05						
ANGLES				UNIT	MM		INCH					
DO NOT SCALE PRINT		THIS INFORMATION IS CONFIDENTIAL AND IS DISCLOSED TO YOU ON CONDITION THAT NO FURTHER DISCLOSURE IS MADE BY YOU TO OTHER THAN FCI PERSONNEL WITHOUT WRITTEN AUTHORIZATION FROM FCI JAPAN K.K.										
DF-140A REV A		SC-SLW03 JSA96300										

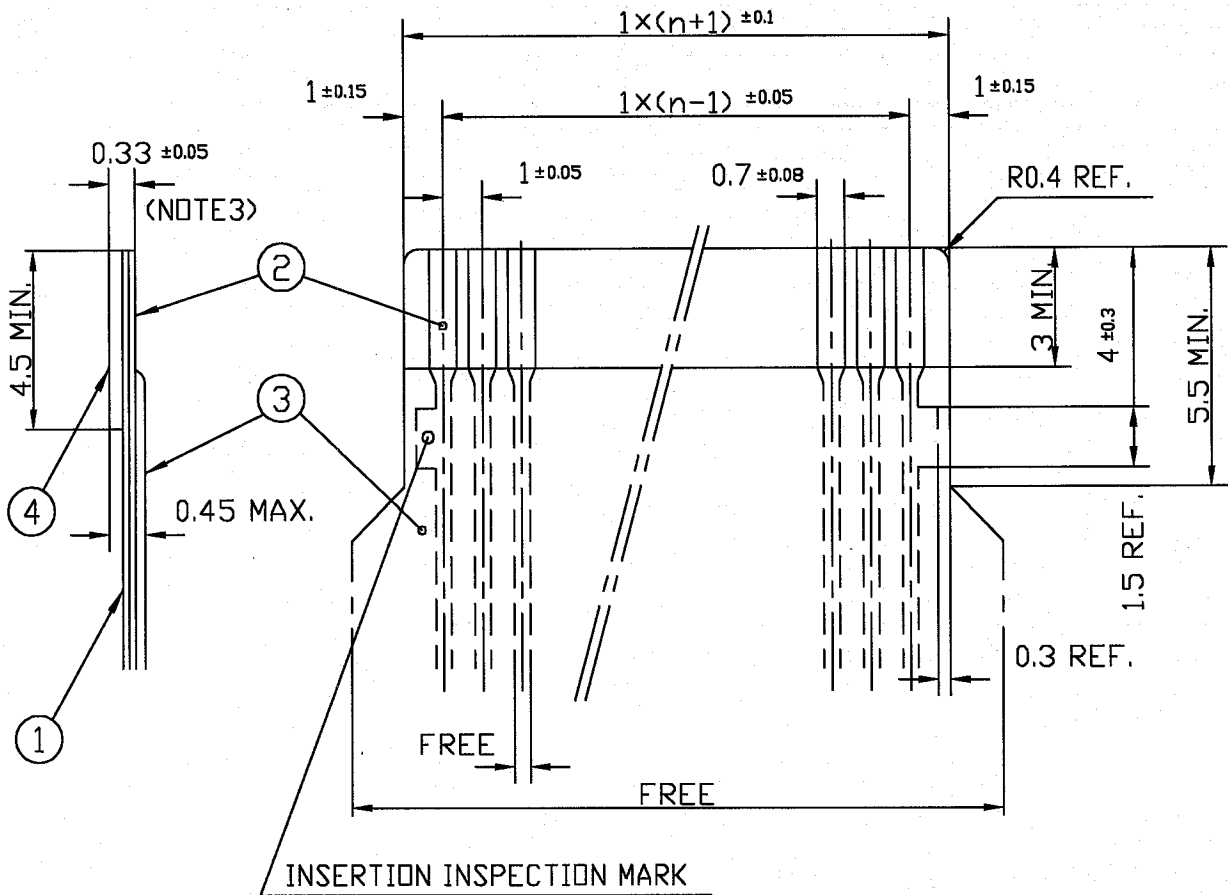
FCI

TITLE				
1mm SPACING CONNECTOR (Cat. No. SLW__S-1C7LF)				
PRODUCT FAMILY				CODE
58JF				JP
SCALE	SIZE	DWG. NO.	REV	SHEET
-	A	JSA 96301	B	OF

REVISIONS				
REV	DESCRIPTION	ECN	BY	DATE
AA	Changed form	J05-0079	H.T	2/18/05


RECOMMENDED CABLE (FPC)

n : NO. OF CONDUCTOR



PT. NO.	PARTS NAME	MATERIAL	THICKNESS (μm)
1	BASE FILM	POLYIMIDE OR POLYESTER OR EQUAL	25
2	CONDUCTOR	COPPER FOIL(PLATING : SOLDER 1μm MIN.)	35
3	OVERLAY	POLYIMIDE OR POLYESTER OR EQUAL	—
4	SUPPORTING TAPE	POLYESTER OR POLYIMIDE OR EQUAL	188

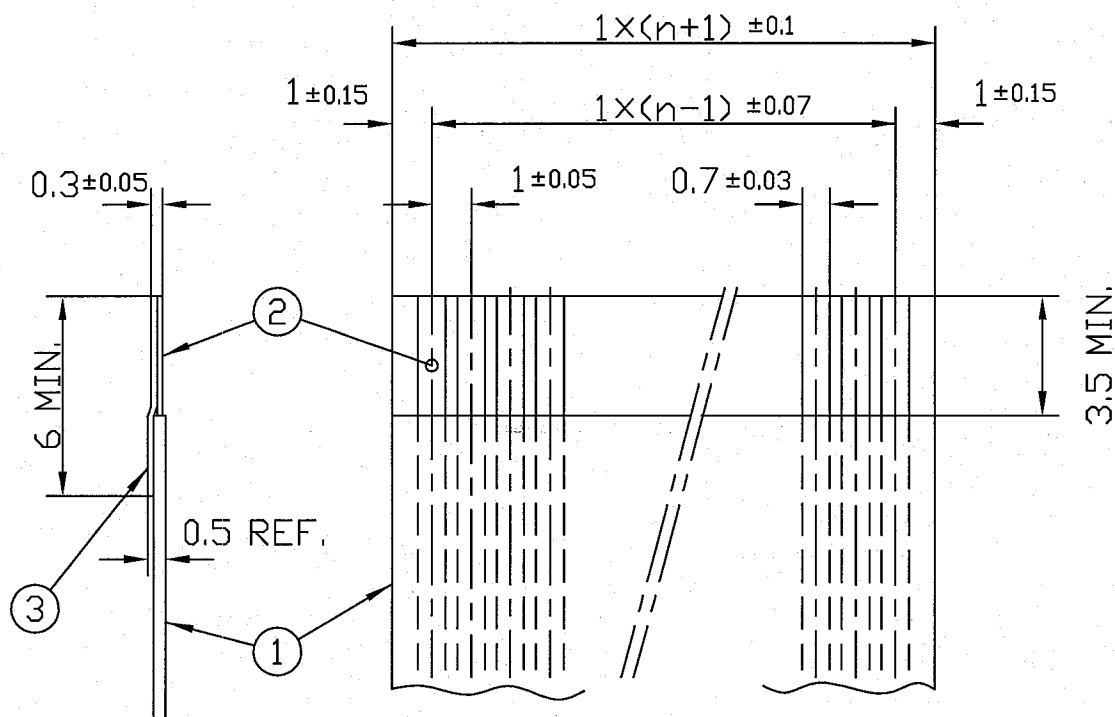
- NOTES 1. NO BURR AT EACH PORTION.
2. NO PEELING IN COMMON USE.
3. TOTAL THICKNESS LIMIT OF EACH MATERIAL (INCLUDING ADHESIVE AGENT) IS SPECIFIED.

SHEET INDEX	ISSUE	AA											
	SH NO.	1											
TOLERANCES UNLESS OTHERWISE SPECIFIED			DR	A. KOBAYASHI	DATE	05/2/18	CUSTOMER COPY	<div style="text-align: center;">  <p>RECOMMENDED CABLE (Cat. No. SLW__R/S-__)</p> </div>					
LINEAR			ENGR										
			CHK										
			APPD										
ANGLES					DATE	2/18/05	THIRD ANGLE PROJ						
					UNIT	MM							
DO NOT SCALE PRINT			THIS INFORMATION IS CONFIDENTIAL AND IS DISCLOSED TO YOU ON CONDITION THAT NO FURTHER DISCLOSURE IS MADE BY YOU TO OTHER THAN FCI PERSONNEL WITHOUT WRITTEN AUTHORIZATION FROM FCI JAPAN K.K.				SCALE		SIZE	DWG. NO.	REV	SHEET	
DF-140A REV A							-		A	JSA 91648	AA	OF	

RECOMMENDED CABLE (FFC)


REVISIONS				
REV	DESCRIPTION	ECN	BY	DATE
AA	Changed form.	J05-0079	H.T	2/18/05

n : NO. OF CONDUCTOR



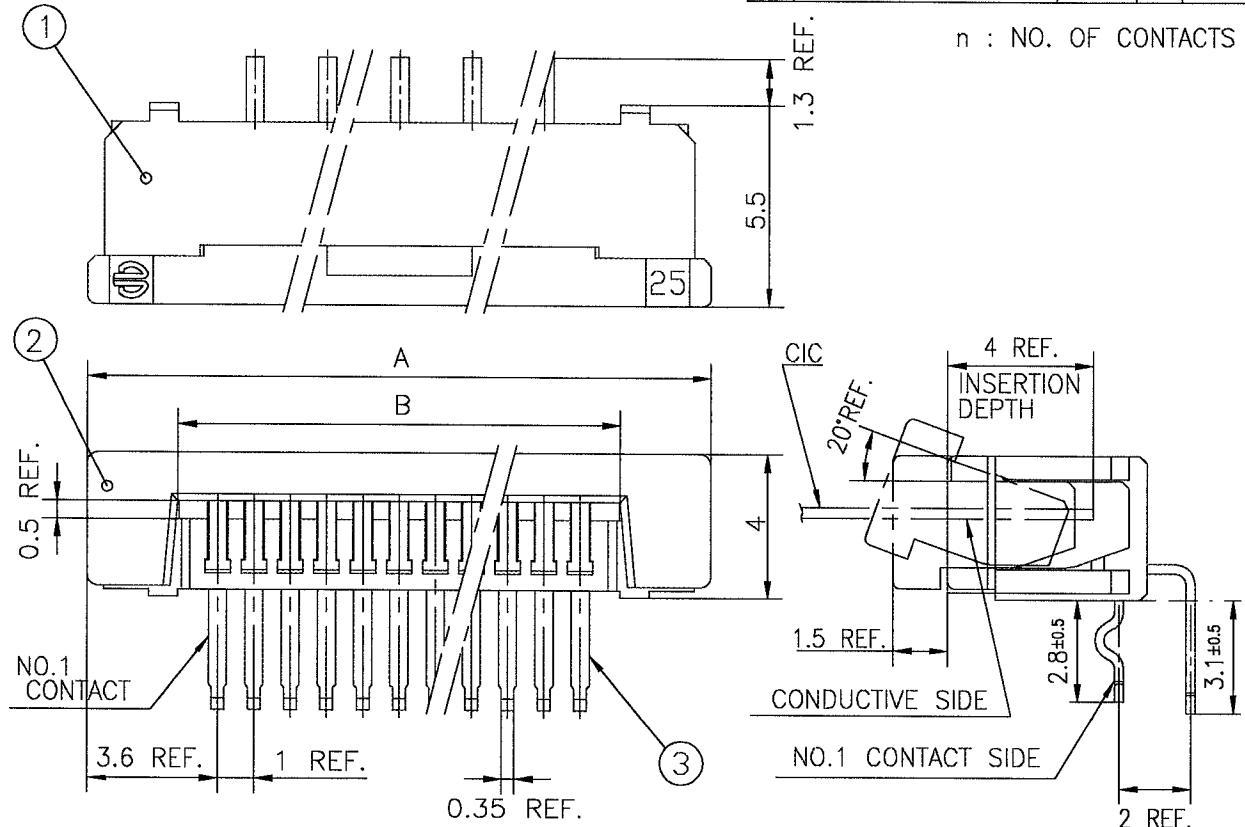
PT. NO.	PARTS NAME	MATERIAL	NOTE
1	INSULATOR	FLAME RESISTING POLYESTER OR EQUAL	
2	CONDUCTOR	COPPER FOIL	PLATING : TIN OR SOLDER 1μm MIN.
3	SUPPORTING TAPE	FLAME RESISTING POLYESTER OR EQUAL	

- NOTES
1. NO BURR AT EACH PORTION.
 2. NO PEELING IN COMMON USE.

SHEET INDEX	ISSUE	AA																			
	SH NO.	1																			
TOLERANCES UNLESS OTHERWISE SPECIFIED		DR		A. KOBAYASHI		DATE		2/18/05		CUSTOMER COPY		TITLE RECOMMENDED CABLE (Cat. No. SLW__R/S-____)									
±0.3		ENGR																			
LINEAR		CHK								THIRD ANGLE PROJ		PRODUCT FAMILY 58JF									
ANGLES		APPD								UNIT										MM	
DO NOT SCALE PRINT		THIS INFORMATION IS CONFIDENTIAL AND IS DISCLOSED TO YOU ON CONDITION THAT NO FURTHER DISCLOSURE IS MADE BY YOU TO OTHER THAN FCI PERSONNEL WITHOUT WRITTEN AUTHORIZATION FROM FCI JAPAN K.K.																			
DF-140A REV A		SCALE		-		SIZE		A		DWG. NO.		JSA 91649		REV		AA		SHEET		OF	

REVISIONS				
REV	DESCRIPTION	ECN	BY	DATE
A	Released	J05-0079	H.T	05/2/15

REVISIONS				
REV	DESCRIPTION	ECN	BY	DATE
A	Released	J05-0079	H.T	05/2/15
B	Added heat resistance	J05-0734	H.T	10/28/05

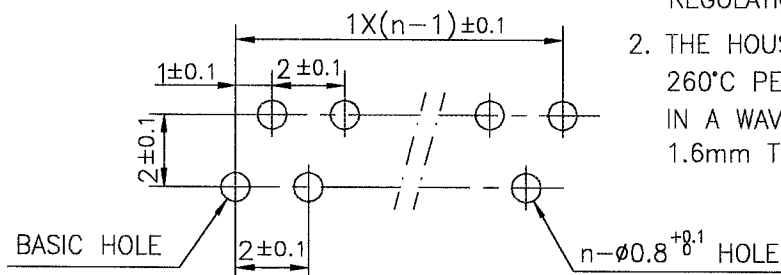


PT.NO.	PARTS NAME	MATERIAL	Q'TY	NOTE
1	HOUSING	NYLON RESIN GLASS REINFORCED (UL94V-0)	1	COLOR : BLACK
2	SLIDER		1	COLOR : WHITE
3	CONTACT	PHOSPHOR BRONZE	n	PLATING : MATTE PURE TIN (LEAD FREE)

RECOMMENDED PC BOARD

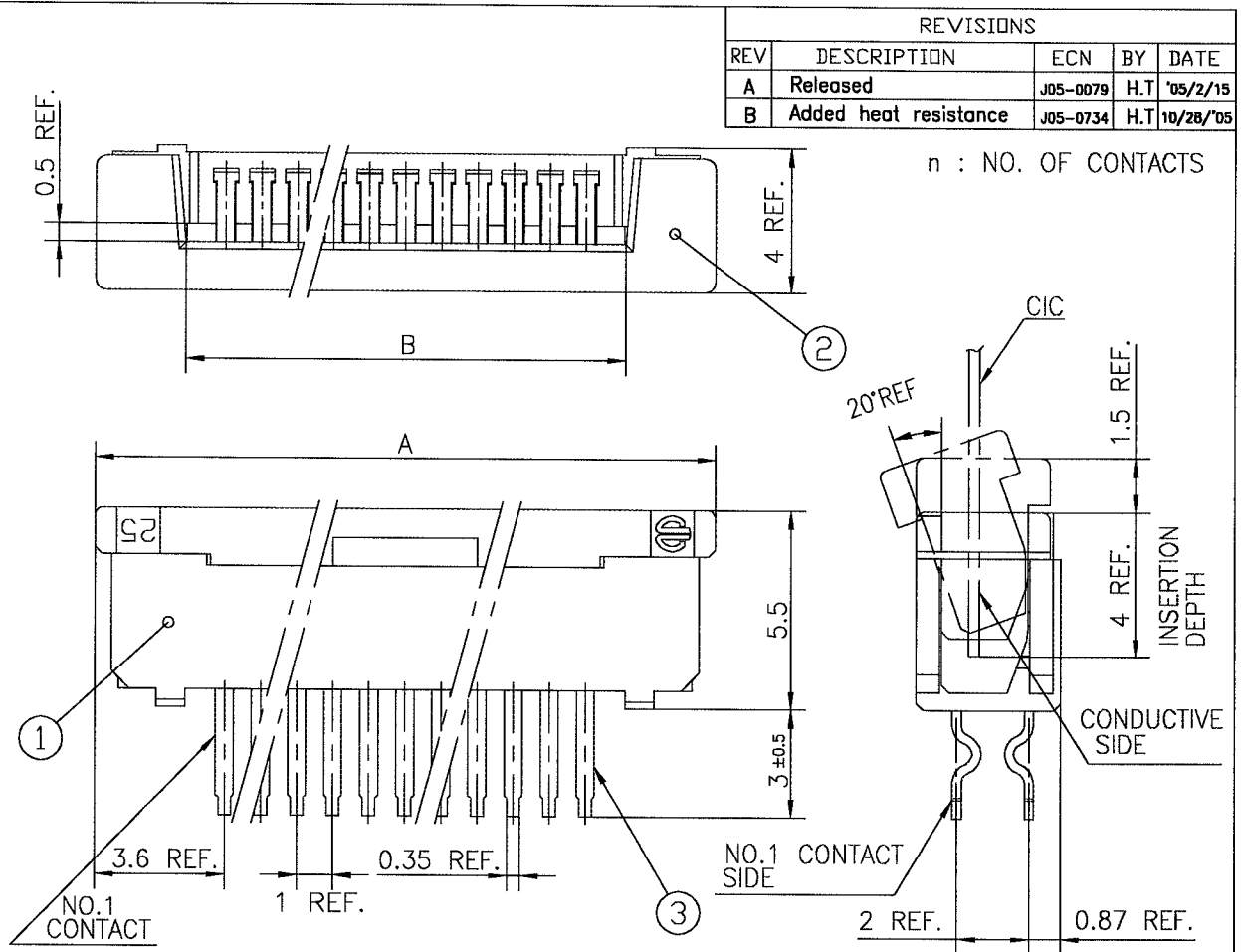
THICKNESS : 0.8~1.6

HOLE PATTERN (COMPONENT SIDE)



1. THIS PRODUCT MEETS EUROPEAN UNION DIRECTIVES AND OTHER COUNTRY REGULATIONS AS DESCRIBED IN GS-22-008
2. THE HOUSING WILL WITHSTAND EXPOSURE TO 260°C PEAK TEMPERATURE FOR 10 SECONDS IN A WAVE SOLDER APPLICATION WITH A 1.6mm THICK CIRCUIT BOARD.

SHEET INDEX	ISSUE	B											
	SH NO.	1											
TOLERANCES UNLESS OTHERWISE SPECIFIED			DR	DATE		CUSTOMER COPY	TITLE 1mm SPACING CONNECTOR (Cat. No. SLW__R-5C7LF)						
LINEAR	±0.3	ENGR	10/21/05		THIRD ANGLE PROJ								
ANGLES		CHK	10/21/05		UNIT	PRODUCT FAMILY 58JF							
DO NOT SCALE PRINT			THIS INFORMATION IS CONFIDENTIAL AND IS DISCLOSED TO YOU ON CONDITION THAT NO FURTHER DISCLOSURE IS MADE BY YOU TO OTHER THAN FCI PERSONNEL WITHOUT WRITTEN AUTHORIZATION FROM FCI JAPAN K.K.			SCALE		SIZE	DWG. NO.	REV	SHEET		
DF-140A REV A			SC-SLW04 JSA96303			A		JSA 96305	B	OF			

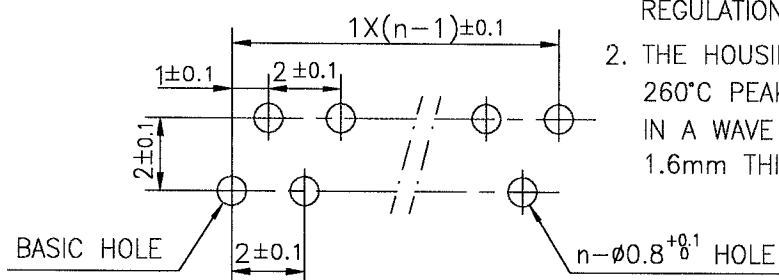


PT.NO.	PARTS NAME	MATERIAL	Q'TY	NOTE
1	HOUSING	NYLON RESIN GLASS REINFORCED (UL94V-0)	1	COLOR : BLACK
2	SLIDER		1	COLOR : WHITE
3	CONTACT	PHOSPHOR BRONZE	n	PLATING : MATTE PURE TIN (LEAD FREE)

RECOMMENDED PC BOARD

THICKNESS : 0.8~1.6

HOLE PATTERN (COMPONENT SIDE)



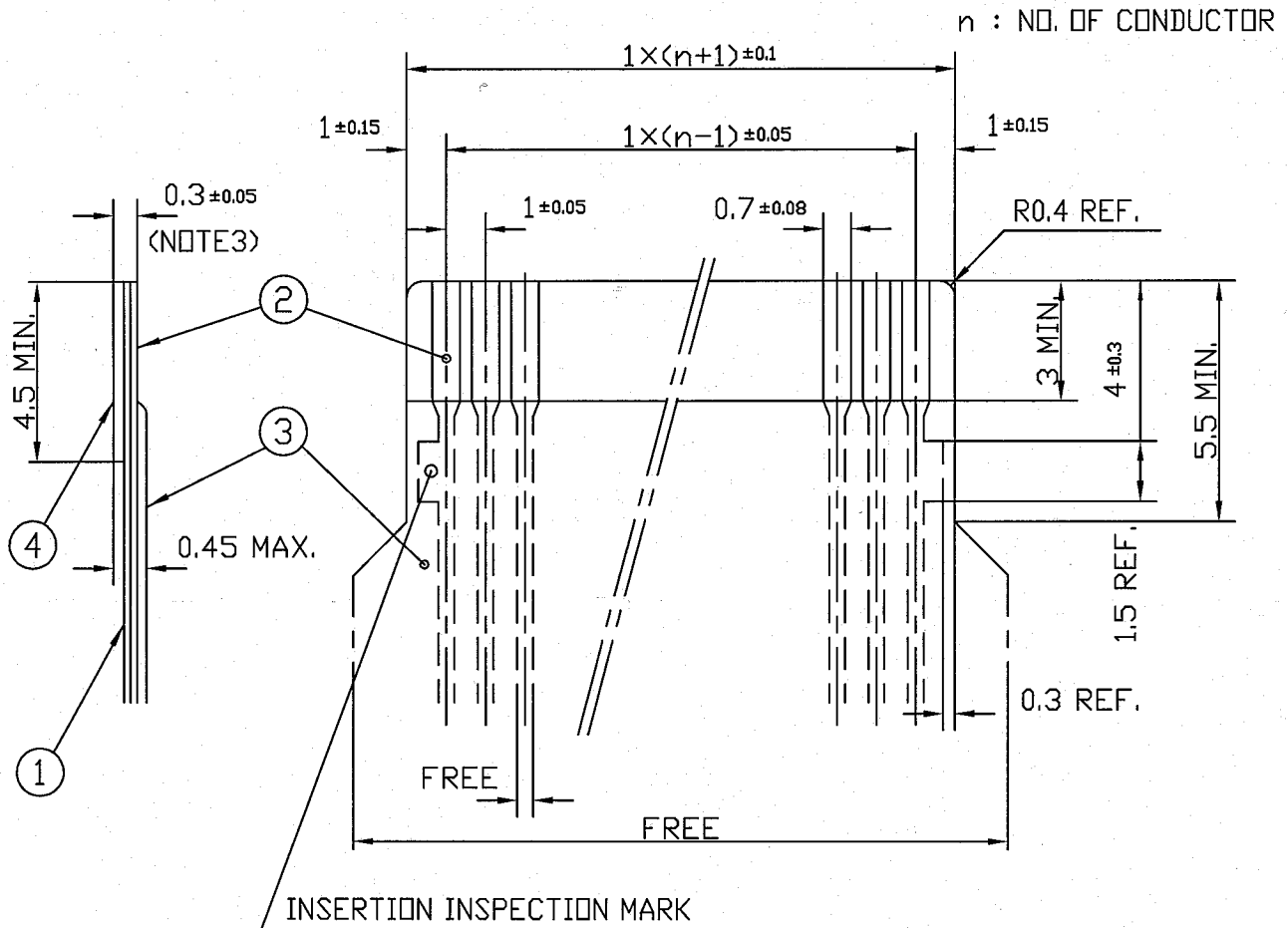
1. THIS PRODUCT MEETS EUROPEAN UNION DIRECTIVES AND OTHER COUNTRY REGULATIONS AS DESCRIBED IN GS-22-008

2. THE HOUSING WILL WITHSTAND EXPOSURE TO 260°C PEAK TEMPERATURE FOR 10 SECONDS IN A WAVE SOLDER APPLICATION WITH A 1.6mm THICK CIRCUIT BOARD.

SHEET INDEX	ISSUE	B															
	SH NO.	1															
TOLERANCES UNLESS OTHERWISE SPECIFIED			DR		DATE		CUSTOMER COPY		TITLE								
± 0.3			ENGR		10/28/05												
LINEAR			CHK		10/31/05		THIRD ANGLE PROJ		PRODUCT FAMILY								
ANGLES			APPD		11/1/05		UNIT										
							MM		58JF								
							INCH										
DO NOT SCALE PRINT			THIS INFORMATION IS CONFIDENTIAL AND IS DISCLOSED TO YOU ON CONDITION THAT NO FURTHER DISCLOSURE IS MADE BY YOU TO OTHER THAN FCI PERSONNEL WITHOUT WRITTEN AUTHORIZATION FROM FCI JAPAN K.K.										SCALE	SIZE	DWG. NO.	REV	SHEET
DF-140A REV A			SC-SLW04 JSA96303										A	A	JSA 96304	B	OF

RECOMMENDED CABLE (CIC)

REVISIONS				
REV	DESCRIPTION	ECN	BY	DATE
AA	Changed form.	J05-0079	H.T	2/18/05



PT. NO.	PARTS NAME	MATERIAL	THICKNESS (μm)	
1	BASE FILM	POLYESTER OR EQUAL	75	25
2	CONDUCTOR	CARBON PASTE OVER SILVER PASTE	10 MIN.	
3	OVERLAY	POLYIMIDE OR POLYESTER OR EQUAL	—	
4	SUPPORTING TAPE	POLYESTER OR POLYIMIDE OR EQUAL	188	250

NOTES

- NO BURR AT EACH PORTION.
- NO PEELING IN COMMON USE.
- TOTAL THICKNESS LIMIT OF EACH MATERIAL (INCLUDING ADHESIVE AGENT) IS SPECIFIED.

SHEET INDEX	ISSUE	A													
	SH NO.	1													
TOLERANCES UNLESS OTHERWISE SPECIFIED			DR	A. KOBAYASHI		DATE	2/18/05		CUSTOMER COPY		<div style="text-align: center;"> </div> <p>RECOMMENDED CABLE (Cat. No. SLW__R/S-5__)</p>				
LINEAR	±0.3		ENGR	<i>[Signature]</i>		DATE	2/18/05		THIRD ANGLE PROJ.						
			CHK	<i>[Signature]</i>		DATE	2/18/05								
ANGLES			APPD	<i>[Signature]</i>		DATE	2/18/05		UNIT	MM INCH					
DO NOT SCALE PRINT			THIS INFORMATION IS CONFIDENTIAL AND IS DISCLOSED TO YOU ON CONDITION THAT NO FURTHER DISCLOSURE IS MADE BY YOU TO OTHER THAN FCI PERSONNEL WITHOUT WRITTEN AUTHORIZATION FROM FCI JAPAN K.K.							SCALE		SIZE	DWG. NO.	REV	SHEET
DF-140A REV A			PDM: Rev-AA							-		A	JSA 92759	AA	OF
										STATUS		Released		Printed: Oct 12, 2005	