

(SMT) SURFACE MOUNT TEST POINTS ON TAPE & REEL

- Manufactured using flat wire to provide a large mounting surface area
- Ideal for use with miniature probes, clips, and hooks
- Efficient, safe, board level testing
- Ultra low profile, ideally suited for advanced surface mount printed circuit board applications
- Designed for long life and durability

SPECIFICATIONS

Contact Material:

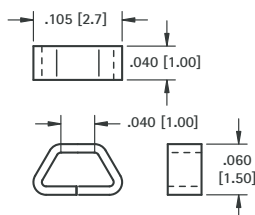
.010 (.25) Phosphor Bronze

Contact Finish: Silver Plate

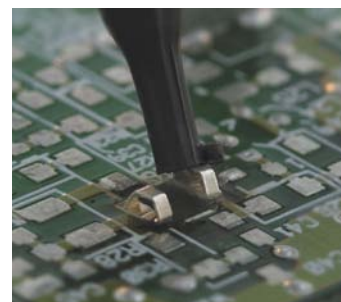
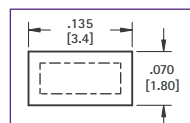
Tape Material: 8mm wide; 4mm pitch;
conductive polycarbonate carrier tape
meets ANSI/EIA-481 standard

MICRO MINIATURE

SUPPLIED ON TAPE AND REEL



Pad Layout



CAT. NO. 5015 - 1000 pieces per reel

CAT. NO. 5017 - 5000 pieces per reel

- Ideal for use with most standard probes, clips and hooks
- Efficient, safe, board level testing
- Unique design provides exceptional strength and durability
- Simplifies testing on dense SMT circuit boards

SPECIFICATIONS

Contact Material:

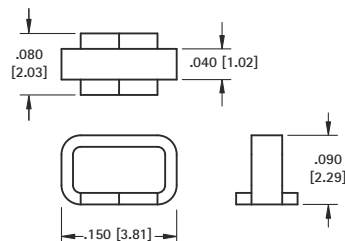
.015 (.38) Phosphor Bronze

Contact Finish: Silver Plate

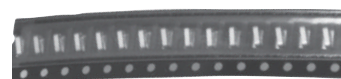
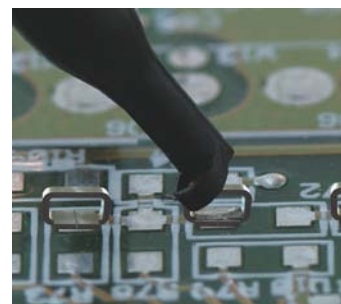
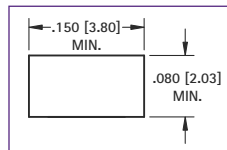
Tape Material: 12mm wide; 4mm pitch;
conductive polycarbonate carrier tape
meets ANSI/EIA-481 standard

MINIATURE

SUPPLIED ON TAPE AND REEL



Pad Layout



CAT. NO. 5019 - 1000 pieces per reel

CAT. NO. 5029 - 5000 pieces per reel

- Ideal for use with standard probes, clips and hooks
- Efficient, safe, board level testing
- Unique design provides exceptional strength and durability
- Simplifies testing on dense SMT circuit boards

SPECIFICATIONS

Contact Material:

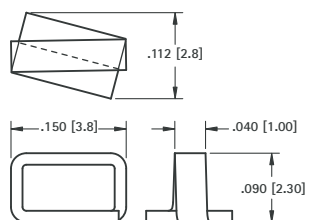
.015 (.38) Phosphor Bronze

Contact Finish: Silver Plate

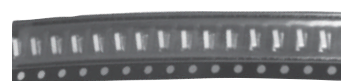
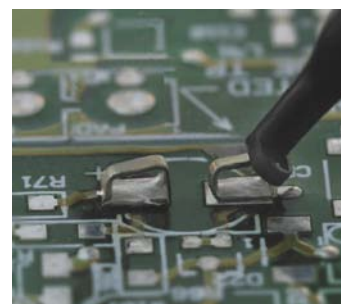
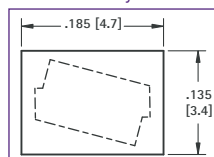
Tape Material: 12mm wide; 4mm pitch;
conductive polycarbonate carrier tape
meets ANSI/EIA-481 standard

COMPACT

SUPPLIED ON TAPE AND REEL



Pad Layout



CAT. NO. 5016 - 1000 pieces per reel

CAT. NO. 5018 - 5000 pieces per reel

ALLIGATOR CLIPS

SMALL CLIP

- Solder Connection with Strain Relief
- Insulated or Non-Insulated



CAT. NO.	INSULATOR COLOR
5033	NONE
5034	RED
5035	BLACK
5036	GREEN
5037	YELLOW

JAW SPREAD
.236 (6.0) max.

MATERIAL:
Clip: Steel, Nickel Plate
Insulator: Vinyl

MEDIUM CLIP

- Solder Connection with Strain Relief
- Insulated or Non-Insulated



CAT. NO.	INSULATOR COLOR
5038	NONE
5039	RED
5040	BLACK

JAW SPREAD
.236 (6.0) max.

MATERIAL:
Clip: Steel, Nickel Plate
Insulator: Vinyl

LARGE CLIP

- Solder Connection or Screw Connection (Barrel Accepts Wire or Standard Banana Plugs)
- Insulated or Non-Insulated



CAT. NO.	INSULATOR COLOR
5044	NONE
5045	RED
5046	BLACK
5048	SCREW INSTALLED

JAW SPREAD
.315 (8.0) max.

MATERIAL:
Clip: Steel, Nickel Plate
Insulator: Vinyl

Tel (718) 956-8900 • Fax (718) 956-9040
(800) 221-5510 • kec@keyelco.com

KEYSTONE
RoHS COMPLIANT — ISO 9001 CERTIFIED

www.keyelco.com
31-07 20th Road - Astoria, NY 11105-2017