

20mm THRU-HOLE MOUNT COIN CELL HOLDERS

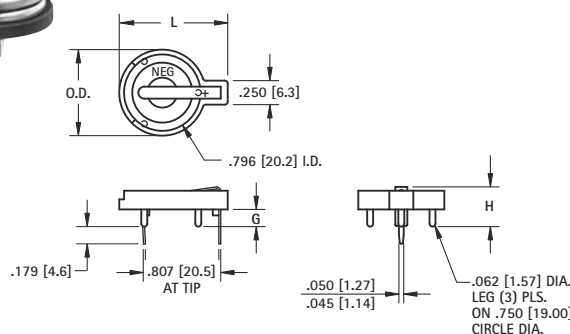


- Advanced air-flow design enhances air circulation around battery
- Reliable spring tension assures low contact resistance
- Unique notched slots assure quick and easy battery insertion and replacement
- Retains battery securely to withstand shock and vibration
- PBT base material UL rated 94V-0. Impervious to most industrial solvents
- Operating temperature range:
-60°F to +293°F (-50°C to +145°C)

MATERIAL:

Contacts: .020 (.50) Spring Steel, Tin-Nickel Plate

Base: PBT, UL Rated 94V-0

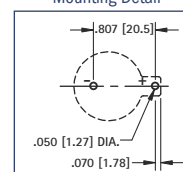


- **Cat. No. 101** is designed to maximize PC Board Capacity
- Unique raised mounting design allows components to be placed underneath the holder
- Ideal when board space is more important than board height; such as PC/104 applicatons



CAT. NO.	G	H	L	O.D.	NO. OF CELLS	BATTERY REFERENCE
103	.100 (2.5)	.335 (8.5)	1.130 (28.7)	.896 (22.8)	(1) cell (any 20mm) (2) 2012, (2) 2016	BR2012, CR2012, CR2016, CL2016, DL2020, CL2025, BR2025, CR2032, CL2032
101	.179 (4.6)	.414 (10.5)	1.130 (28.7)	.896 (22.8)	(1) cell (any 20mm) (2) 2012, (2) 2016	BR2012, CR2012, CR2016, CL2016, DL2020, CL2025, BR2025, CR2032, CL2032
106	.100 (2.5)	.335 (8.5)	1.219 (31.0)	1.093 (27.8)	(1) cell (any 20mm) (2) 2012, (2) 2016	BR2012, CR2012, CR2016, CL2016, DL2020, CL2025, BR2025, CR2032, CL2032
1026	.100 (2.5)	.452 (11.5)	1.219 (31.0)	1.093 (27.8)	(2) 2020, (2) 2025, (2) 2032	DL2020, CR2020, CL2025, BR2025, CR2032, CL2032

Mounting Detail

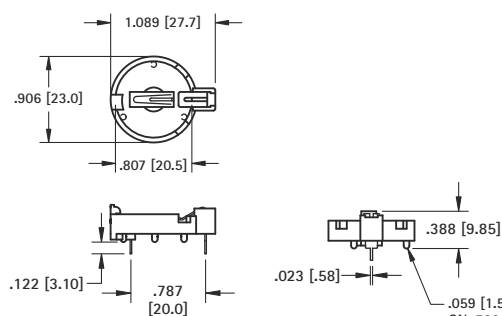
**TOP LOADING**

- Battery "Pop-in" from top for compact applications
- Finger pressure against lever will release battery
- No tools required for battery changes

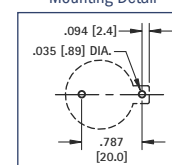
MATERIAL:

Contacts: .016 (.40) Phosphor Bronze, Tin Plate

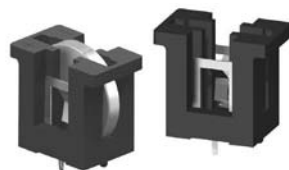
Base: Nylon UL Rated 94V-0



Mounting Detail

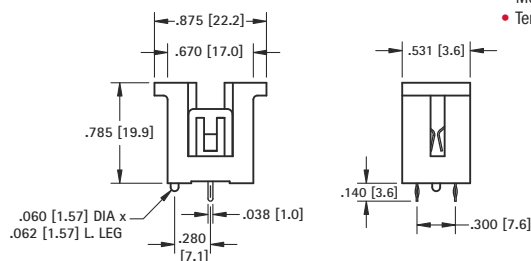


CAT. NO.	BATTERY REFERENCE
1066	BR2025, CR2032

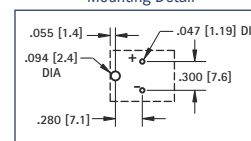
VERTICAL COMPACT**MATERIAL:**

Contacts: .012 (.30) Spring Steel, Tin-Nickel Plate

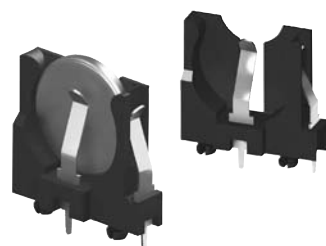
Base: PBT, UL Rated 94V-0



Mounting Detail

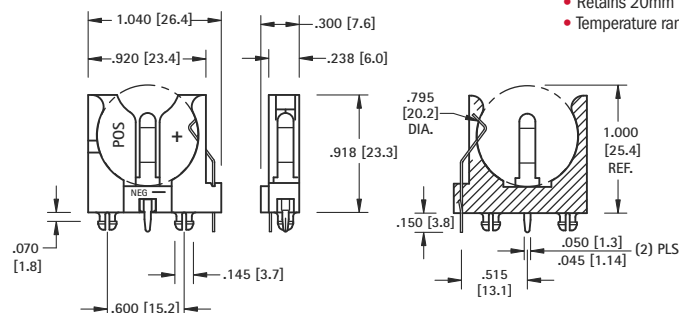


CAT. NO.	BATTERY REFERENCE
1067	CR2016, DL2020, CL2025, CR2032

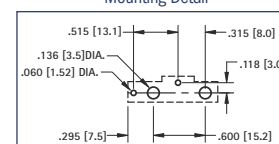
VERTICAL SLIMLINE**MATERIAL:**

Contacts: .016 (.40) Spring Steel, Tin-Nickel Plate

Base: PBT, UL Rated 94V-0



Mounting Detail



CAT. NO.	BATTERY REFERENCE
1065	BR2012, CR2016, DL2020, CL2025, CR2032

Tel (718) 956-8900 • Fax (718) 956-9040
(800) 221-5510 • kec@keyelco.com

KEYSTONE
RoHS COMPLIANT ~ ISO 9001 CERTIFIED

www.keyelco.com
31-07 20th Road - Astoria, NY 11105-2017

20mm COIN CELL HOLDERS

THRU-HOLE (THM) & SURFACE MOUNT (SMT) COIN CELL HOLDERS

DESIGN ADVANTAGES...

- Reliable spring tension assures low contact resistance
- Retains battery securely to withstand shock and vibration
- All conductive polystyrene carrier tape meets ANSI/EIA - 481 standard

- Base material UL Rated 94V-0. Impervious to most industrial solvents
- Operating temperature range: -60°F to +293°F (-50°C to +145°C)

IDEALLY SUITED FOR...

- Computer memory, power transfer and back-up systems
- Video and telecommunications power back-up
- Microprocessors and Microcomputer memory hold (desktop and laptop applications)

- Industrial and commercial security and alarm systems
- Communications power sources
- PC/104 applications

20mm CELLS



- Polarity clearly marked (+)
- Compatible with vacuum and mechanical pick & place assembly systems
- Low profile for high density packaging
- Rugged construction, light weight
- SMT solder tail with "Flow-Hole" design for increased joint strength
- Viewable solder tails assures reliable joint inspection
- Safe for all soldering & reflow operations

MATERIAL:

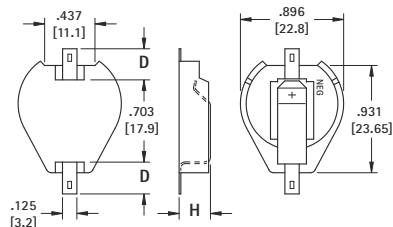
Contacts: .015 (.38) Steel

Base: High Temperature, Nylon 46, UL Rated 94V-0

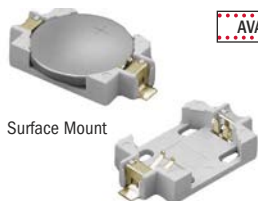
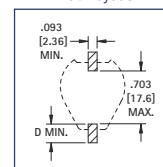
Tin-Nickel Plate		Gold Plate (Flash)		D	H	CELLS	BATTERY REFERENCE
CAT. NO.	ON TAPE & REEL	CAT. NO.	ON TAPE & REEL	PAD SIZE	HIEGHT		
1061	1061TR	1081	1081TR	.156 (4.0)	.290 (7.4)	(1) Cell (any 20mm)	CR2012, CL2016, BR2020, DL2032, CR2032
1063	1063TR	1093	1093TR	.278 (7.1)		(2) 2012, (2) 2016	
1062	1062TR	1082	1082TR	.156 (4.0)	.391 (9.9)	(2) 2020, (2) 2025, (2) 2032	
1064	1064TR	1094	1094TR	.278 (7.1)		(3) 2012, (3) 2016	

Tape & Reel Spec's: 44mm wide; 32mm pitch; 13 inch reel (200 pieces per reel)

AVAILABLE ON TAPE AND REEL



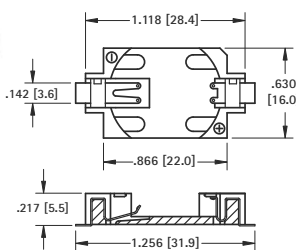
Pad Layout



Surface Mount

- Compatible with vacuum and mechanical pick & place assembly systems

AVAILABLE ON TAPE AND REEL



2025 / 2032 CELL

- Polarized Holders
- Low Profile for high density packaged PCB's
- Vertical entry

MATERIAL:

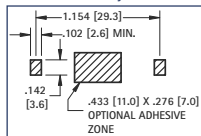
Contacts: .006 (.15) Phosphor Bronze, Gold Plate (Flash)

Base: Glass Filled LCP, UL Rated 94V-0

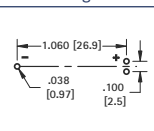
CAT. NO.	ON TAPE & REEL	BATTERY REFERENCE
1060	1060TR	CR2025, DL2032

Tape & Reel Spec's: 44mm wide; 24mm pitch; 13 inch reel (500 pieces per reel)

Pad Layout



Mounting Detail



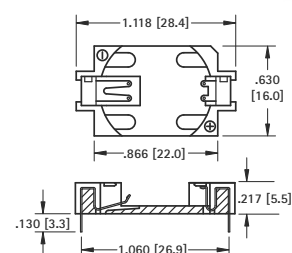
MATERIAL:

Contacts: .006 (.15) Phosphor Bronze, Tin Plate

Base: Glass Filled LCP, UL Rated 94V-0



Thru Hole Mount



CAT. NO.	BATTERY REFERENCE
1059	CR2025, DL2032

INSULATED RETAINERS



AVAILABLE ON TAPE AND REEL

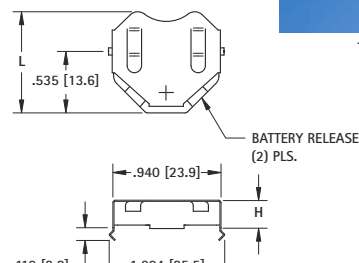
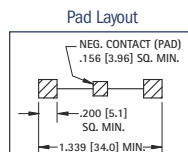
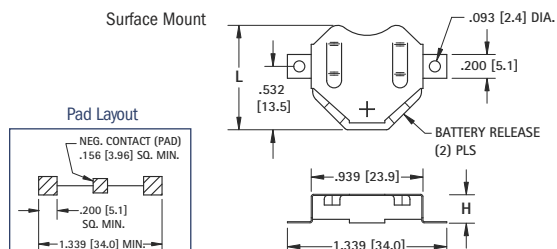
20mm CELLS

- Ideal for 6 volt or 3 volt applications
- Two coin cell batteries can be installed in series
- Plastic insulator prevents shorting of battery, within the holder, when installed improperly

- Low profile
- Battery release ports for easy battery replacement
- Refer to pages 6 & 7 for a complete offering of coin cell retainers

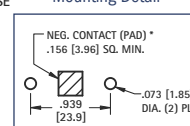
MATERIAL: Contacts: .010 (.25) Phosphor Bronze **Insulator:** High Temperature, Nylon 46, UL Rated 94V-0

Surface Mount



Thru Hole Mount

Mounting Detail



Surface Mount			Thru Hole Mount		
Tin-Nickel Plate			Matte Tin Plate		
CAT. NO.	CAT. NO.	ON TAPE & REEL	CAT. NO.	CAT. NO.	ON TAPE & REEL
LOOSE*	BULK		LOOSE*	BULK	
3020-2	3020	3020TR	3070-2	3070	3070TR
3022-2	3022	3022TR	3072-2	3072	3072TR
3024-2	3024	3024TR	3074-2	3074	3074TR

* Supplied Unassembled

Tape & Reel Spec's: 56mm wide; 28mm pitch; 13 inch reel: 3020TR, 3070TR 400 pieces per reel; 3022TR, 3072TR 250 pieces per reel; 3024TR, 3074TR 250 pieces per reel

BATTERY REFERENCE		L	H
6 VOLT (2) CELLS	3 VOLT (1) CELL		
2012, 2016	2020, 2025	.890 (22.6)	.156 (4.0)
2020, 2025	2032	.877 (22.3)	.240 (6.1)
2032	Not Applicable	.877 (22.3)	.295 (7.5)

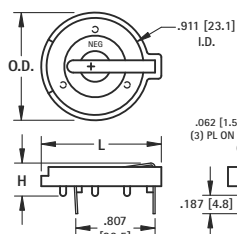
Thru Hole Mount	
CAT. NO.	CAT. NO.
LOOSE*	BULK
3021-2	3021
3023-2	3023
3025-2	3025

THRU-HOLE (THM) & SURFACE MOUNT (SMT) COIN CELL HOLDERS

23mm

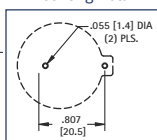


Thru Hole Mount



- Polarity clearly marked (+)
- Rugged construction, light weight
- SMT solder tail with "Flow-Hole" design for increased joint strength
- Viewable solder tails assures reliable joint inspection
- Safe for all soldering & reflow operations
- Compatible with vacuum and mechanical pick & place assembly systems

Mounting Detail



MATERIAL:

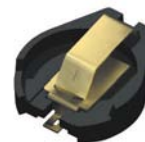
Contacts: .020 (.50) Spring Steel, Tin-Nickel Plate

Base: PBT, UL Rated 94V-0

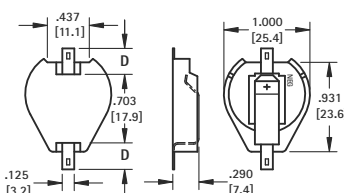
Operating Temperature: -60°F to +293°F (-50°C to +145°C)

CAT. NO.	H	L	O.D.	NO. OF CELLS	BATTERY REFERENCE
104	.335 (8.5)	1.150 (29.2)	1.000 (25.4)	(1) Cell (Any 23mm)	BR2320, CR2320, CL2325, DL2330, CL2354, CR2335
107	.335 (8.5)	1.219 (31.0)	1.093 (27.8)	(1) Cell (Any 23mm)	
1027	.452 (11.5)	1.219 (31.0)	1.093 (27.8)	(2) 2320, (2) 2325, (2) 2330	

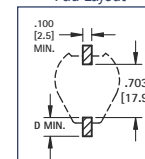
AVAILABLE ON TAPE AND REEL



Surface Mount



Pad Layout



MATERIAL:

Contacts: .015 (.38) Steel

Base: High Temp Nylon 46, UL Rated 94V-0

Operating Temperature: -60°F to +293°F (-50°C to +145°C)

Tin-Nickel Plate		Gold Plate (Flash)		D PAD SIZE	BATTERY REFERENCE
CAT. NO.	ON TAPE BULK & REEL	CAT. NO.	ON TAPE BULK & REEL		
1071	1071TR	1091	1091TR	.156 (4.0)	CR2320, CL2325,
1073	1073TR	1083	1083TR	.278 (7.1)	DL2330, CR2335

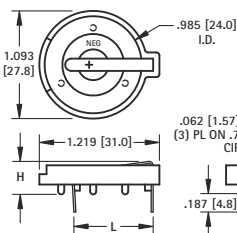
Tape & Reel Spec's: 44mm wide; 32mm pitch; 13 inch reel, (200 pieces per reel)

Note: All conductive polystyrene carrier tape meets ANSI/EIA - 481 standard

24mm

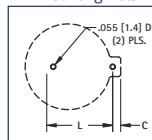


Thru Hole Mount



- Advanced air-flow design enhances air circulation around battery
- Unique notched slots assure quick and easy battery insertion and replacement

Mounting Detail



MATERIAL:

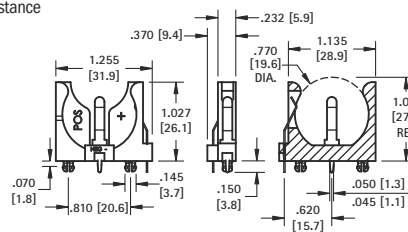
Base: PBT, UL Rated 94V-0

Contacts: .020 (.50) Spring Steel, Tin-Nickel Plate

Operating Temperature: -60°F to +293°F (-50°C to +145°C)

CAT. NO.	C	H	L	NO. OF CELLS	BATTERY REFERENCE
105	.064 (1.6)	.335 (8.5)	.805 (20.5)	(1) 2430	CR2430, CL2430, BR2450, CR2477
1025	.074 (1.9)	.452 (11.5)	.805 (20.5)	(1) 2450	
1025-7	.074 (1.9)	.503 (12.8)	.805 (20.5)	(1) 2477	
				(2) 2430	

- Polarized holder
- Mounts securely for wave soldering
- Reliable spring tension assures low contact resistance



Thru Hole Mount

MATERIAL:

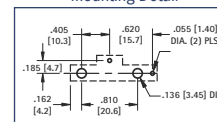
Base: PBT, UL Rated 94V-0

Contacts: .020 (.50) Spring Steel, Tin-Nickel Plate

Operating Temperature: -60°F to +293°F (-50°C to +145°C)

CAT. NO.	BATTERY REFERENCE
1068	(1) CR2450, (1) CL2450

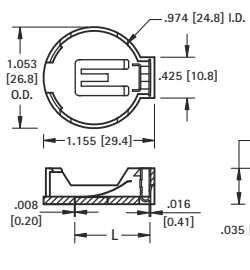
Mounting Detail



24mm TOP Loading

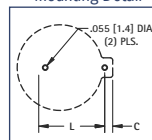


Thru Hole Mount



- Battery "Pop-in" from Top for compact designs
- No tools required
- Finger pressure battery release

Mounting Detail



MATERIAL:

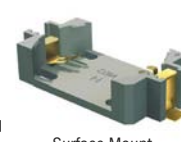
Contacts: Phosphor Bronze, Nickel Plate

Base: High Temp Nylon 46, UL Rated 94V-0

Operating Temperature: -60°F to +293°F (-50°C to +145°C)

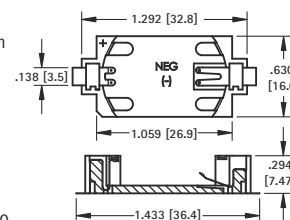
CAT. NO.	L	C	BATTERY REFERENCE
1053	.788 (20.0)	.048 (1.2)	(1) CR2450

AVAILABLE ON TAPE AND REEL



Surface Mount

- Polarized holder
- Low profile for densely packed PCB's
- Compatible with vacuum and mechanical pick & place systems
- Conductive carrier tape meets ANSA/EIA- 481 standard



MATERIAL:

Base: LCP, UL Rated 94V-0

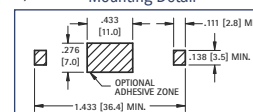
Contacts: .020 (.50) Spring Steel, Tin-Nickel Plate

Operating Temperature: -60°F to +293°F (-50°C to +145°C)

CAT. NO.	ON TAPE BULK & REEL	BATTERY REFERENCE
1052	1052TR	(1) CR2450

Tape & Reel Spec's: 56mm wide; 24mm pitch; 13 inch reel, (250 pieces per reel)

Mounting Detail



30mm



Thru Hole Mount

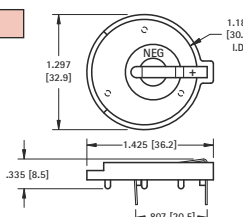
MATERIAL:

Contacts: .020 (.50) Spring Steel, Tin-Nickel Plate

Base: PBT, UL Rated 94V-0

Operating Temperature: -60°F to +293°F (-50°C to +145°C)

CAT. NO.	BATTERY REFERENCE
301	BR3032



Mounting Detail

