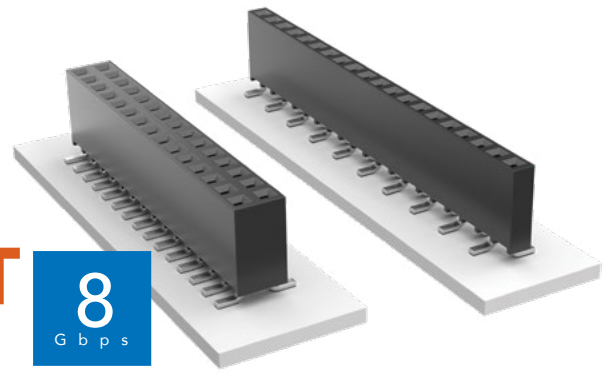


# SURFACE MOUNT .025" SQ POST SOCKET

(2.54 mm) .100" PITCH • SSW SERIES



## SSW

### Mates:

TSW, MTSW, HTSW,  
HMTSW, MTLW, EW, ZW,  
TSS, HTSS, ZSS, TSM,  
TSSH, DW, HW

## SPECIFICATIONS

### Insulator Material:

Black LCP

### Contact Material:

Phosphor Bronze

### Plating:

Au or Sn over

50  $\mu$ " (1.27  $\mu$ m) Ni

### Current Rating (SSW/TSM):

4.7 A per pin

(2 pins powered)

### Operating Temp Range:

-55 °C to +125 °C with Gold

-55 °C to +105 °C with Tin

### Insertion Depth:

(3.68 mm) .145" to

(6.35 mm) .250"

### Max Cycles:

100 with 10  $\mu$ " (0.25  $\mu$ m) Au

### Voltage Rating:

465 VAC / 655 VDC

## PROCESSING

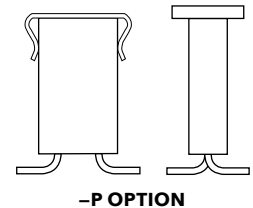
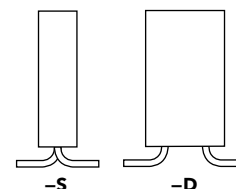
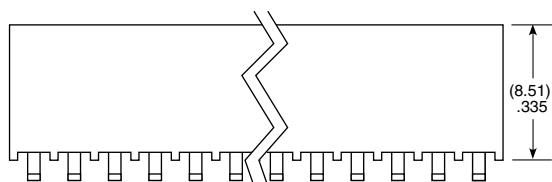
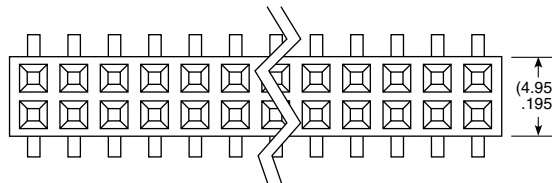
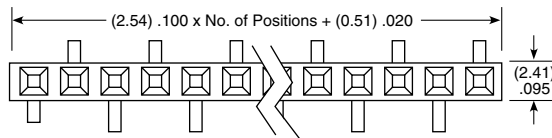
### Lead-Free Solderable:

Yes

### SMT Lead Coplanarity:

(0.10 mm) .004" max

SSW	1	NO. PINS PER ROW	22	PLATING OPTION	ROW OPTION	VS	OTHER OPTION
		02 thru 36					
				-F = Gold flash on contact, Matte Tin on tail	-S = Single Row		-XX = Polarized Position
				-L = 10 $\mu$ " (0.25 $\mu$ m) Gold on contact, Matte Tin on tail	-D = Double Row		-K = -S: (3.50 mm) .138" DIA, -D: (6.50 mm) .256" DIA Polyimide film Pick & Place Pad (03 positions min.)
				-G = 20 $\mu$ " (0.51 $\mu$ m) Gold on contact, Gold flash on tail			-P = Pick & Place Pad (05 positions min.)
							-TR = Tape & Reel (-02 thru -28)
							-FR = Full Reel Tape & Reel (must order max. quantity per reel; contact Samtec for quantity breaks) (-02 thru -28)



-P OPTION

## ALSO AVAILABLE

MOQ Required

Other platings

Notch option

### Note:

Some lengths, styles and options are non-standard, non-returnable.