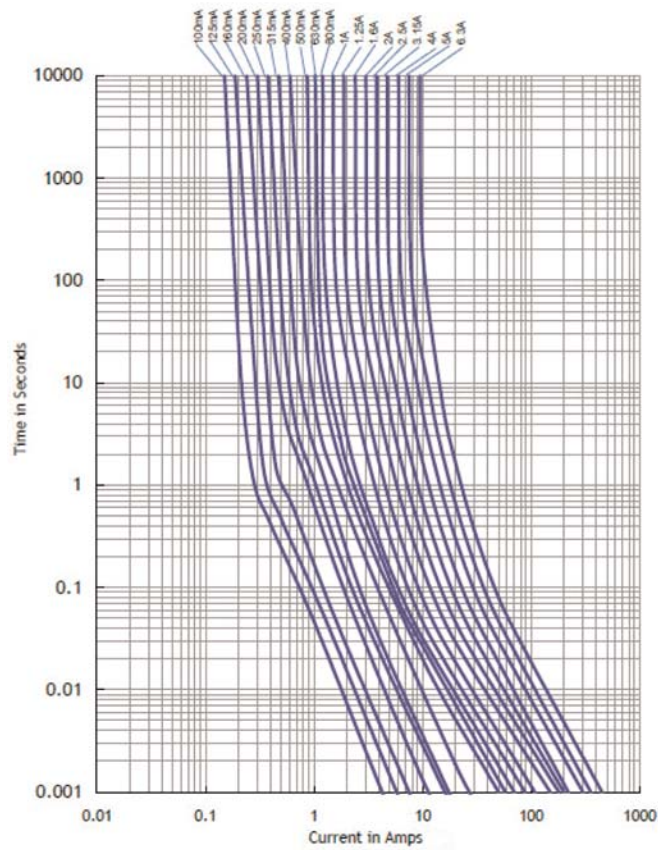
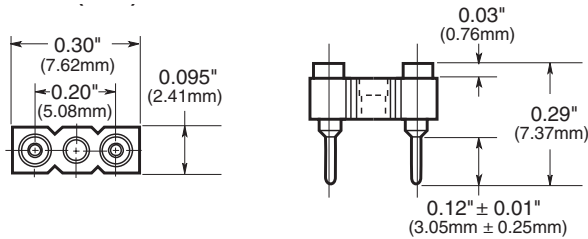


Time-Current Curves

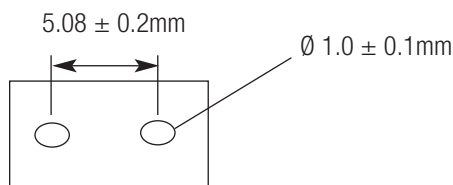


PCS Mounting Socket (RoHS compliant)

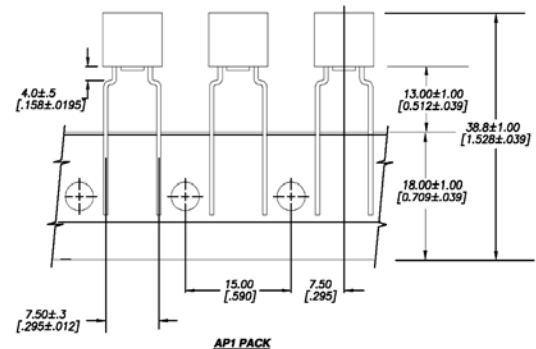
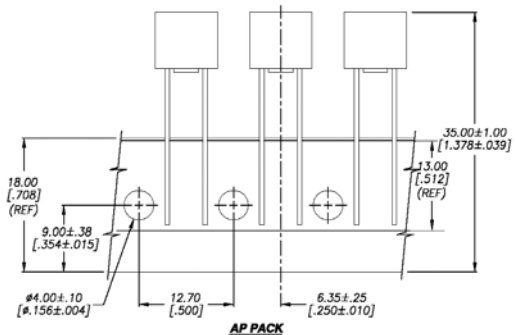
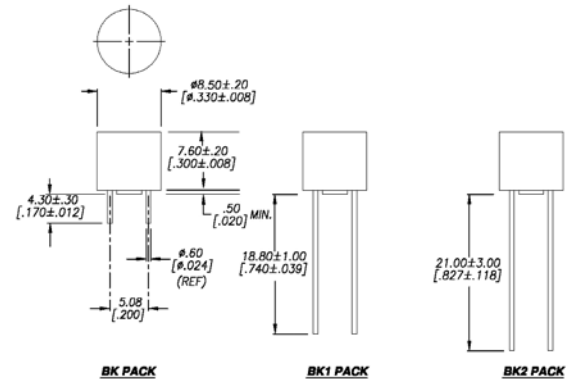
- Available as option. Specify catalog number BK/PCS (in bulk 100 per bag)



Land Pattern



Dimensions – Packaging Information – mm [in]



Packaging Code	
Packaging Code Suffix	Description
-AP, -AP	Ammo-pack taped 1,000 per box (see Packaging Information for lead configurations)
-BK, -BK1, -BK2	In bulk 200 per bag (see Packaging Information for lead configurations)

The only controlled copy of this Data Sheet is the electronic read-only version located on the Cooper Bussmann Network Drive. All other copies of this document are by definition uncontrolled. This bulletin is intended to clearly present comprehensive product data and provide technical information that will help the end user with design applications. Cooper Bussmann reserves the right, without notice, to change design or construction of any products and to discontinue or limit distribution of any products. Cooper Bussmann also reserves the right to change or update, without notice, any technical information contained in this bulletin. Once a product has been selected, it should be tested by the user in all possible applications.

Life Support Policy: Cooper Bussmann does not authorize the use of any of its products for use in life support devices or systems without the express written approval of an officer of the Company. Life support systems are devices which support or sustain life, and whose failure to perform, when properly used in accordance with instructions for use provided in the labeling, can be reasonably expected to result in significant injury to the user.