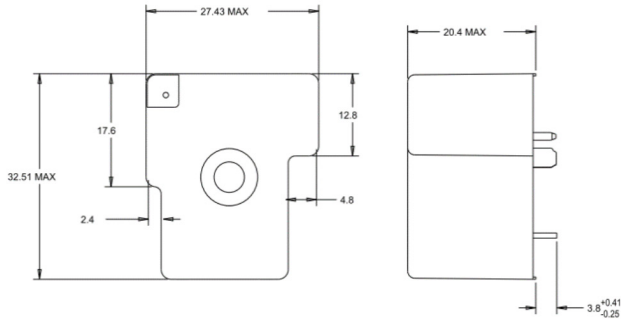


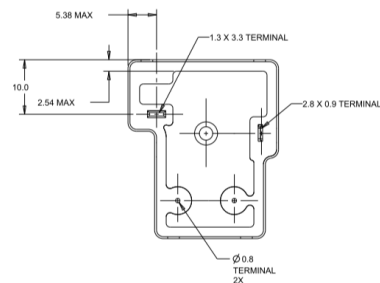
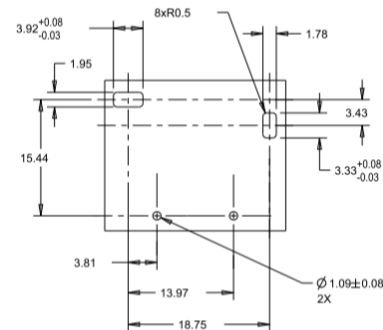
Power PCB Relay T9S Solar (Continued)

Dimensions

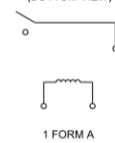


PCB layout / terminal assignment

Bottom view on solder pins



WIRING DIAGRAM
(BOTTOM VIEW)



Notes

1) General tolerance

Diagram Dimension	Tolerance
< 1 mm	±0.1
1 ~ 3 mm	±0.2
> 3 mm	±0.3

2) Dimensions of the pins after tin soldering

- a) +0.4 for the width and the thickness
- b) +1.0 for the length

Product code structure

Typical product code **T9S V 1 K 1 5 -12 S**

Type	T9S Power Relay T9S Series		
Enclosure	V Flux-proof plastic case	S	Wash tight
Contact arrangement	1 1 Form A (1 NO)		
Coil Input	K DC coil, 2.25W		
Mounting and termination	1 PCB mounting; PCB terminals for coil and contacts		
Contact material	5 AgNi		
Coil voltage	Coil code: Please refer to coil version table		
Contact Gap	blank 1.5mm contact gap	S	1.8mm contact gap

Product code	Version	Contact arrangement	Contact material	Contact gap	Coil	Part Number
T9SV1K15-12	PCB, flux tight	1 form A (NO) contact	AgNi	>1.5mm	12VDC	2027395-1
T9SV1K15-12S	PCB, flux tight	1 form A (NO) contact	AgNi	>1.8mm	12VDC	2027395-3

Note. This list represents the most common types and does not show all variants covered by this datasheet, other types on request.