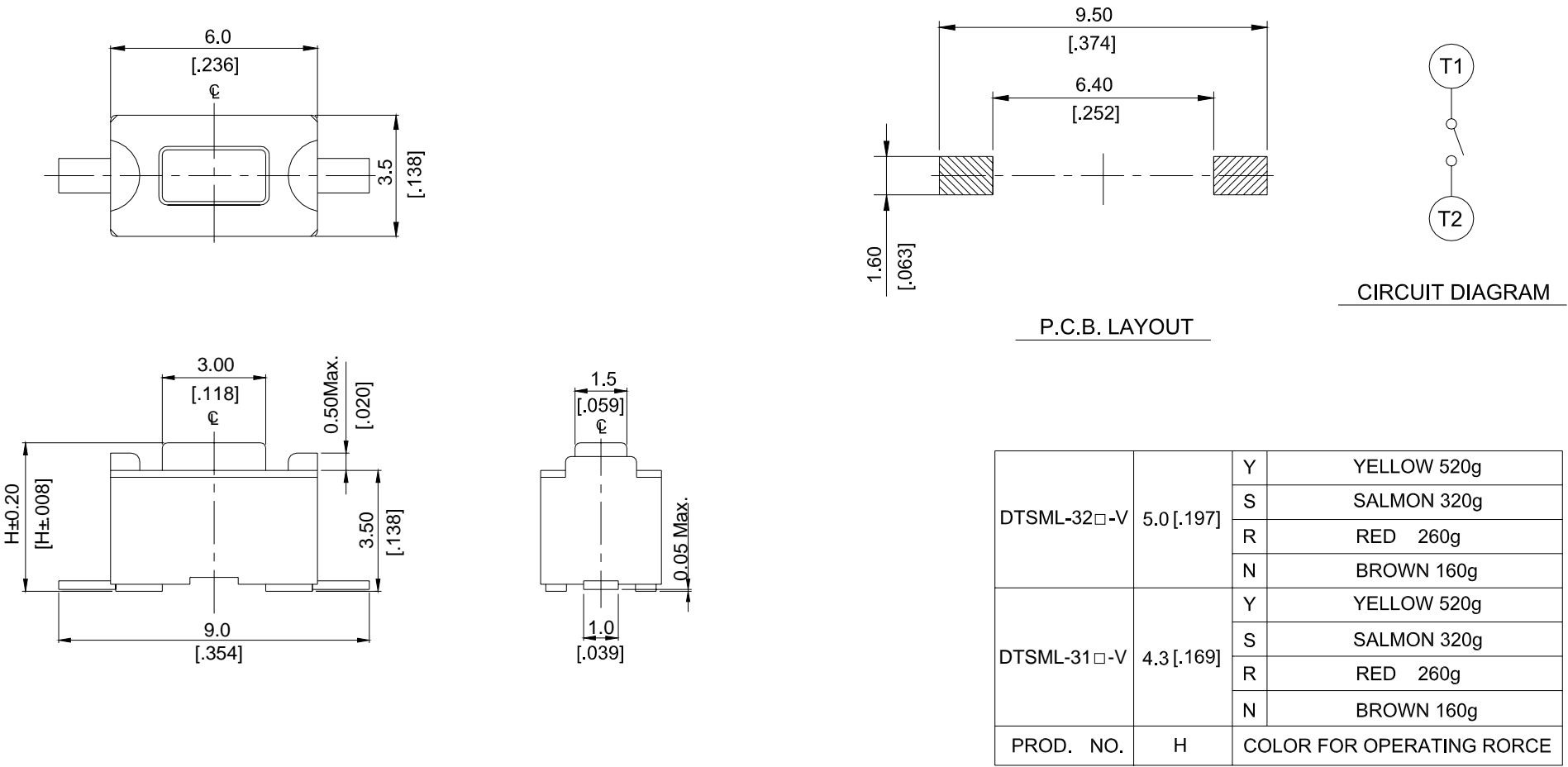
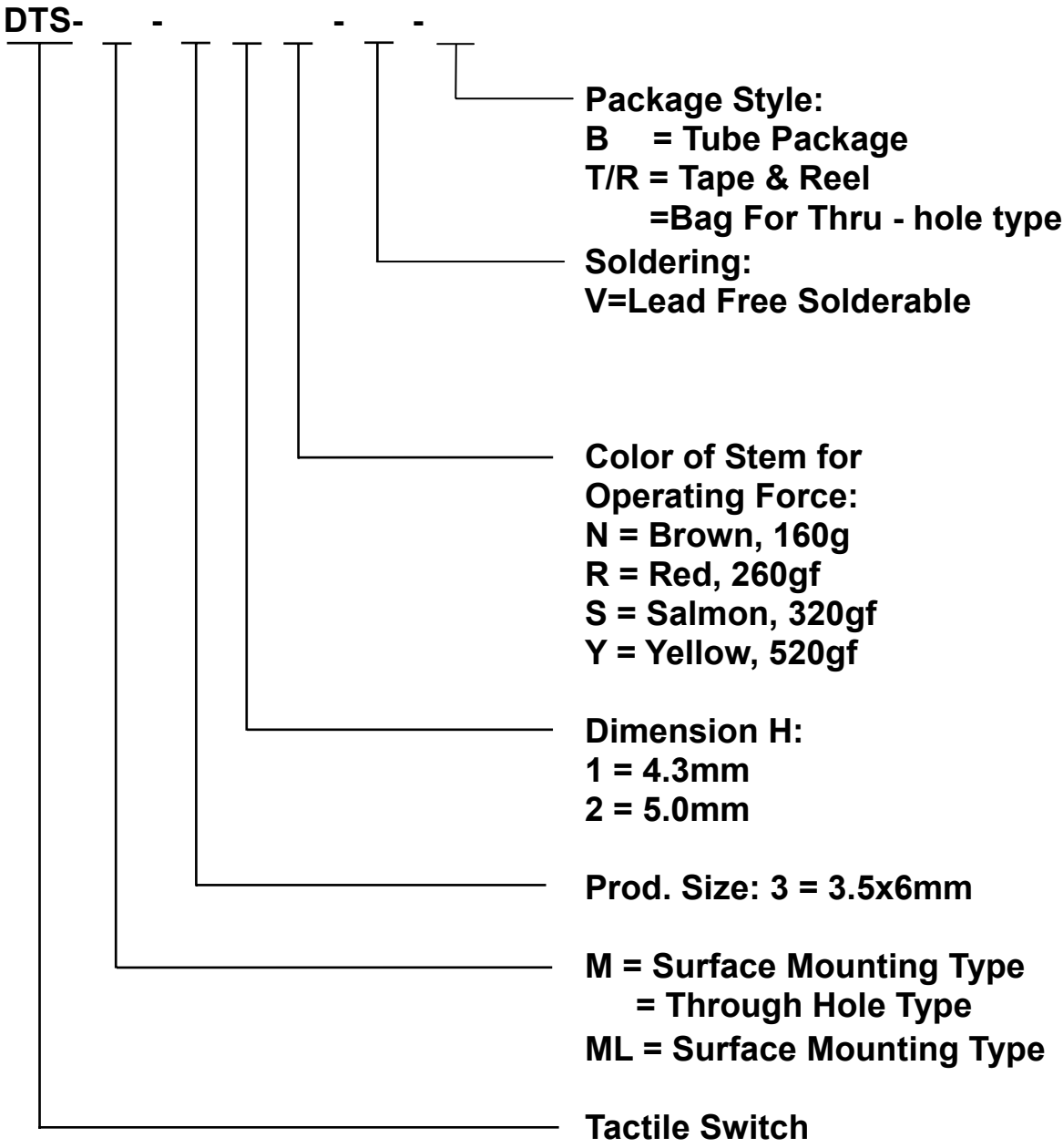


DTSML-3



HOW TO ORDER



SPECIFICATION

MECHANICAL
Operation Force: 520 ± 130gf Yellow (Y)
320 ± 80gf Salmon (S)
260 ± 50gf Red (R)
160 ± 50gf Brown (N)
Stroke: 0.25 +0.20 / - 0.1 mm
Operation Temperature: -25 to +70
Storage Temperature: -30 to +80

ELECTRICAL

Electrical Life: 50,000 cycles for 160gf, 320gf
30,000 cycles for 260gf, 520gf
Rating: 50mA, 12VDC
Contact Resistance: 100mΩ max.
Insulation Resistance: 100MΩ min. at 500VDC
Dielectric Strength: 250VAC/ 1minute
Contact Arrangement: 1 pole 1 throw

MATERIALS

COVER: Stainless steel
BASE: UL94V-0 Nylon Thermoplastic

STEM: UL94V-0 Nylon High-Temp. Thermoplastic
Color: Brown, (160gf), Red (260gf)
Salmon (320gf), Yellow (520gf)
CONTACT DISC: Stainless with silver cladding
TERMINAL: Brass with silver plated

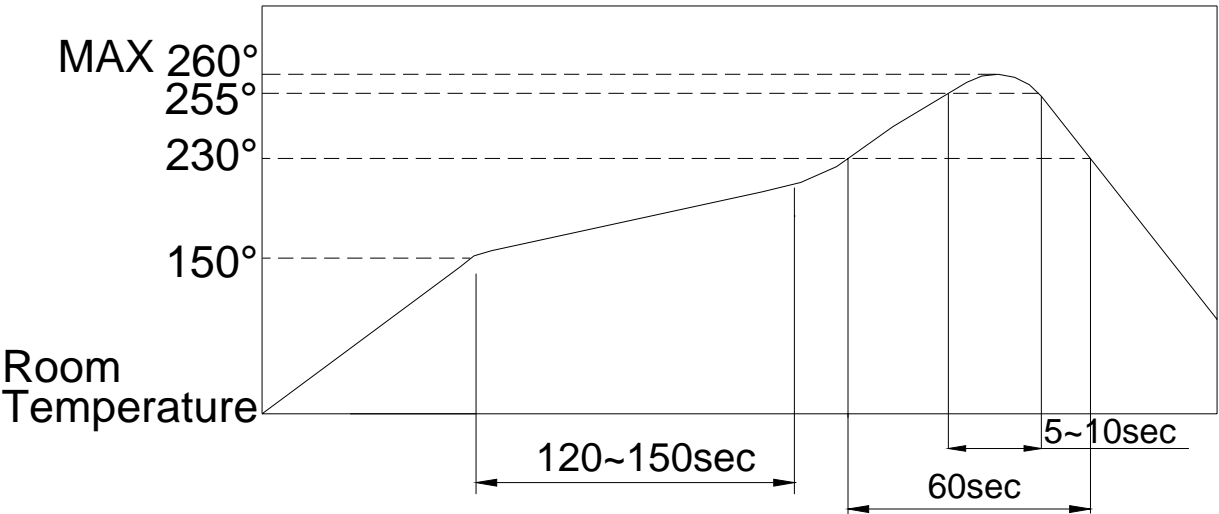
SOLDERING PROCESS

HAND SOLDERING : Use a soldering iron of 30 watts, controlled at 350 approximately max 5 seconds while applying solder.

REFLOW SOLDERING: When applying reflow soldering, the peak temperature or the reflow oven should be set at 260 max.

WAVE SOLDERING: Recommended solder temperature at 500 (260) max. 5 seconds for through hole type. subject to P.C.B 1.6 mm thickness.

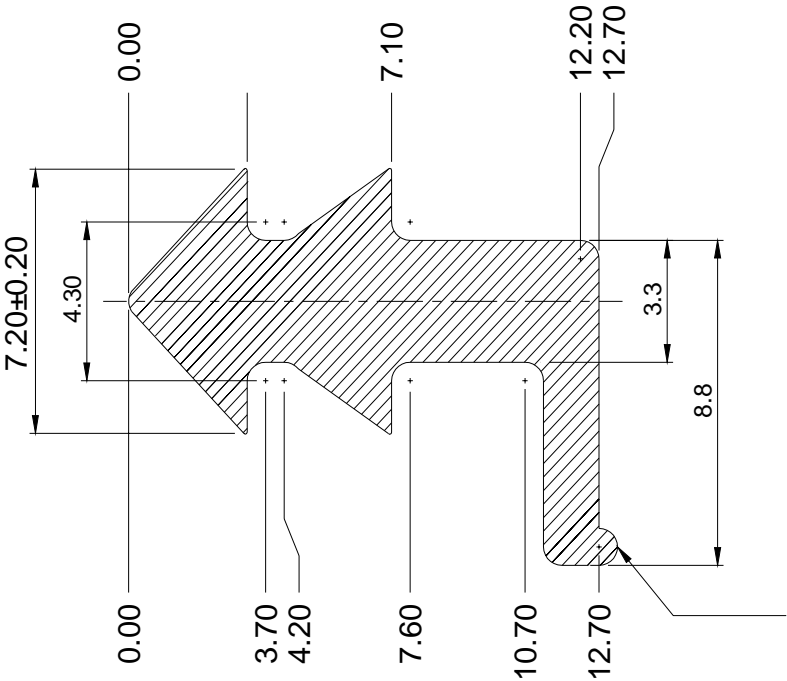
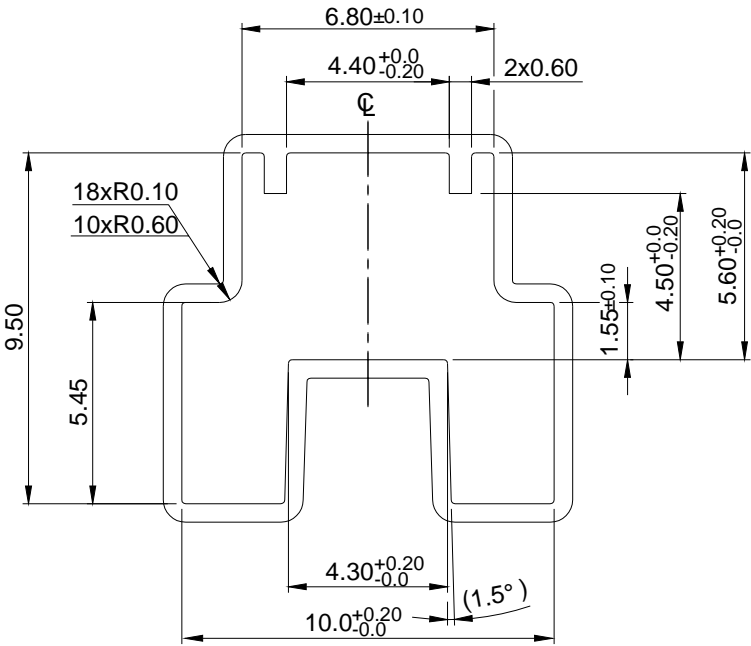
Reflow Temperature Profile:



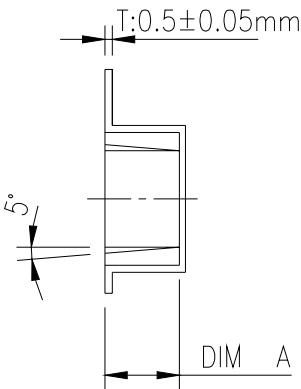
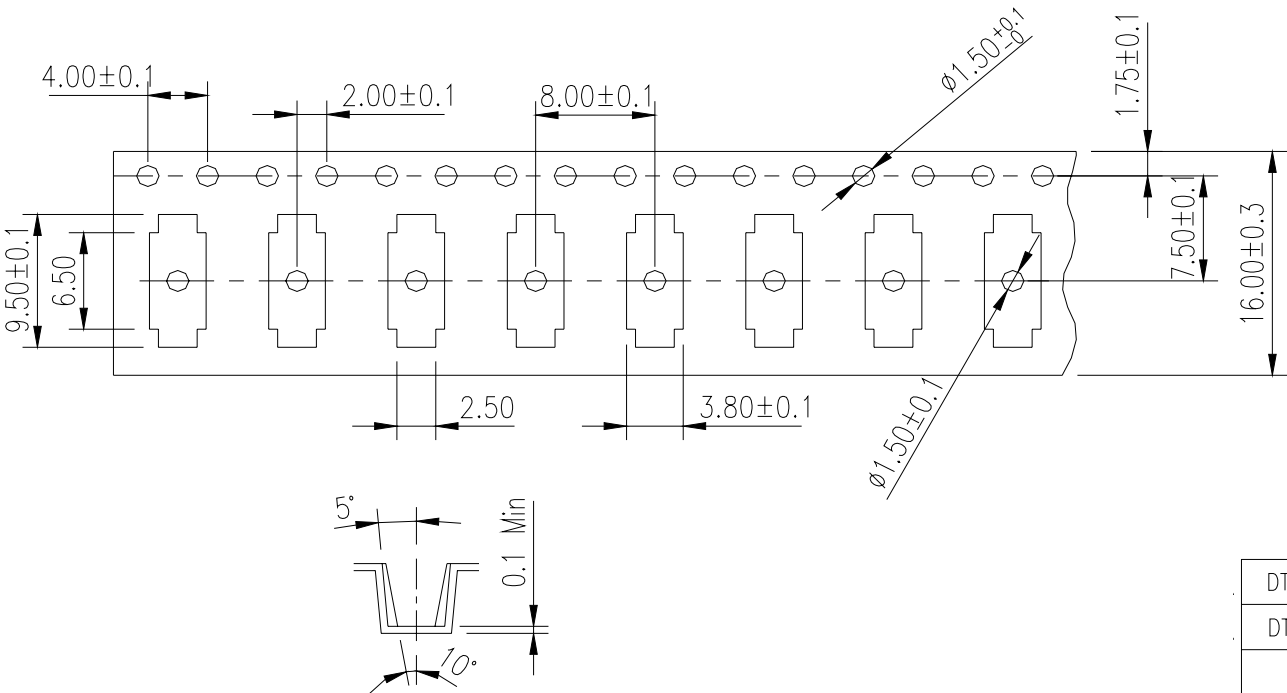
PACKING

Part Number	Number Per Tube	Number Per Reel
DTS-3	135	-
DTS(M)L-31	135	1800
DTS(M)L-32	135	1600

Tube



Reel



DTS(M)L-32	620430002	5.2±0.1	13mm
DTS(M)L-31	620430001	4.5±0.1	
品名	料號	DIM A	膠帶寬
附 件 一			