

Contents

Selection Guide	3	Package Diagram	11
Pin Configurations	3	Acronyms	12
Maximum Ratings	4	Document Conventions	12
Operating Range	4	Units of Measure	12
DC Electrical Characteristics	4	Document History Page	13
Capacitance	5	Sales, Solutions, and Legal Information	14
AC Test Loads and Waveforms	5	Worldwide Sales and Design Support	14
AC Switching Characteristics	6	Products	14
Switching Waveforms	7	PSoC® Solutions	14
Truth Table	9	Cypress Developer Community	14
Ordering Information	10	Technical Support	14
Ordering Code Definitions	10		

Selection Guide

Description		-8	Unit
Maximum Access Time		8	ns
Maximum Operating Current	Commercial	300	mA
	Industrial	300	
Maximum CMOS Standby Current	Commercial / Industrial	50	mA

Pin Configurations

Figure 1. 119-ball PBGA pinout (Top View) ^[1, 2]

	1	2	3	4	5	6	7
A	NC	A	A	A	A	A	NC
B	NC	A	A	\overline{CE}_0	A	A	NC
C	I/O ₁₂	NC	\overline{CE}_1	NC	\overline{CE}_2	NC	I/O ₀
D	I/O ₁₃	V _{DD}	V _{SS}	V _{SS}	V _{SS}	V _{DD}	I/O ₁
E	I/O ₁₄	V _{SS}	V _{DD}	V _{SS}	V _{DD}	V _{SS}	I/O ₂
F	I/O ₁₅	V _{DD}	V _{SS}	V _{SS}	V _{SS}	V _{DD}	I/O ₃
G	I/O ₁₆	V _{SS}	V _{DD}	V _{SS}	V _{DD}	V _{SS}	I/O ₄
H	I/O ₁₇	V _{DD}	V _{SS}	V _{SS}	V _{SS}	V _{DD}	I/O ₅
J	NC	V _{SS}	V _{DD}	V _{SS}	V _{DD}	V _{SS}	DNU
K	I/O ₁₈	V _{DD}	V _{SS}	V _{SS}	V _{SS}	V _{DD}	I/O ₆
L	I/O ₁₉	V _{SS}	V _{DD}	V _{SS}	V _{DD}	V _{SS}	I/O ₇
M	I/O ₂₀	V _{DD}	V _{SS}	V _{SS}	V _{SS}	V _{DD}	I/O ₈
N	I/O ₂₁	V _{SS}	V _{DD}	V _{SS}	V _{DD}	V _{SS}	I/O ₉
P	I/O ₂₂	V _{DD}	V _{SS}	V _{SS}	V _{SS}	V _{DD}	I/O ₁₀
R	I/O ₂₃	A	NC	NC	NC	A	I/O ₁₁
T	NC	A	A	\overline{WE}	A	A	NC
U	NC	A	A	\overline{OE}	A	A	NC

Notes

1. NC pins are not connected on the die.
2. DNU pins have to be left floating or tied to VSS to ensure proper application.

Maximum Ratings

Exceeding maximum ratings may shorten the useful life of the device. User guidelines are not tested.

Storage Temperature -65 °C to +150 °C

Ambient Temperature with
Power Applied -55 °C to +125 °C

Supply Voltage on
 V_{CC} to Relative GND^[3] -0.5 V to +4.6 V

DC Voltage Applied to Outputs

in high Z State^[3] -0.5 V to $V_{CC} + 0.5$ V

DC Input Voltage^[3] -0.5 V to $V_{CC} + 0.5$ V

Current into Outputs (LOW) 20 mA

Operating Range

Range	Ambient Temperature	V_{CC}
Commercial	0 °C to +70 °C	3.3 V ± 0.3 V
Industrial	-40 °C to +85 °C	

DC Electrical Characteristics

Over the Operating Range

Parameter	Description	Test Conditions ^[4]		-8		Unit
				Min	Max	
V _{OH}	Output HIGH Voltage	V _{CC} = Min, I _{OH} = −4.0 mA		2.4	–	V
V _{OL}	Output LOW Voltage	V _{CC} = Min, I _{OL} = 8.0 mA		–	0.4	V
V _{IH}	Input HIGH Voltage			2.0	V _{CC} + 0.3	V
V _{IL} ^[3]	Input LOW Voltage			−0.3	0.8	V
I _{IX}	Input Leakage Current	GND ≤ V _I ≤ V _{CC}		−1	+1	μA
I _{OZ}	Output Leakage Current	GND ≤ V _{OUT} ≤ V _{CC} , Output Disabled		−1	+1	μA
I _{CC}	V _{CC} Operating Supply Current	V _{CC} = Max, f = f _{MAX} = 1/t _{RC}	Commercial	–	300	mA
			Industrial	–	300	mA
I _{SB1}	Automatic CE Power-down Current – TTL Inputs	Max V _{CC} , $\overline{CE} \geq V_{IH}$, V _{IN} ≥ V _{IH} or V _{IN} ≤ V _{IL} , f = f _{MAX}		–	100	mA
I _{SB2}	Automatic CE Power-down Current – CMOS Inputs	Max V _{CC} , CE ≥ V _{CC} − 0.3 V, V _{IN} ≥ V _{CC} − 0.3 V, or V _{IN} ≤ 0.3 V, f = 0	Commercial / Industrial	–	50	mA

Notes

3. $V_{IL}(\text{min}) = -2.0 \text{ V}$ for pulse durations of less than 20 ns.

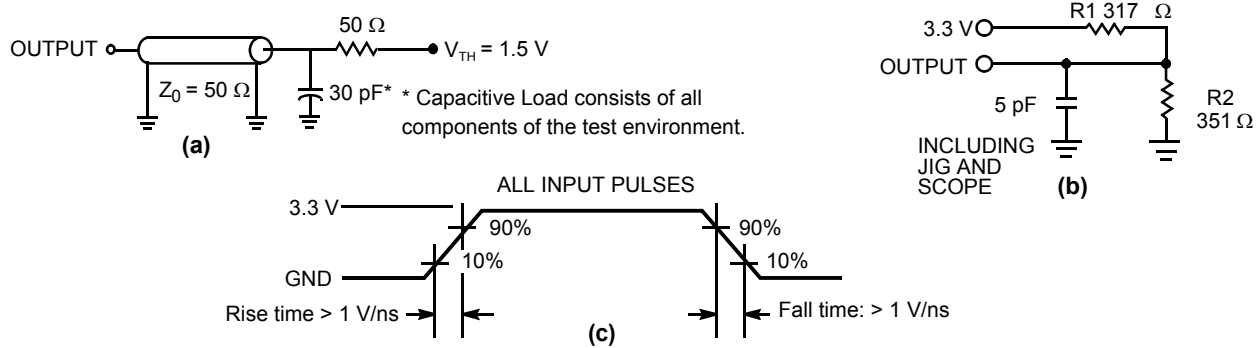
4. \overline{CE} refers to a combination of \overline{CE}_0 , \overline{CE}_1 , and \overline{CE}_2 . \overline{CE} is active LOW when all three of these signals are active LOW at the same time.

Capacitance

Parameter ^[5]	Description	Test Conditions	Max	Unit
C_{IN}	Input Capacitance	$T_A = 25^\circ\text{C}$, $f = 1\text{ MHz}$, $V_{CC} = 3.3\text{ V}$	8	pF
C_{OUT}	I/O Capacitance		10	pF

AC Test Loads and Waveforms

Figure 2. AC Test Loads and Waveforms ^[6]



Notes

- Tested initially and after any design or process changes that may affect these parameters.
- Valid SRAM operation does not occur until the power supplies have reached the minimum operating V_{DD} (3.0 V). As soon as 1 ms (T_{power}) after reaching the minimum operating V_{DD} , normal SRAM operation can begin including reduction in V_{DD} to the data retention (V_{CCDR} , 2.0 V) voltage.

AC Switching Characteristics

Over the Operating Range

Parameter ^[7]	Description	-8		Unit
		Min	Max	
Read Cycle				
t _{power} ^[8]	V _{CC} (typical) to the first access	1	–	ms
t _{RC}	Read Cycle Time	8	–	ns
t _{AA}	Address to Data Valid	–	8	ns
t _{OHA}	Data Hold from Address Change	3	–	ns
t _{ACE}	$\overline{\text{CE}}_1$, $\overline{\text{CE}}_2$, and $\overline{\text{CE}}_3$ LOW to Data Valid	–	8	ns
t _{DOE}	$\overline{\text{OE}}$ LOW to Data Valid	–	5	ns
t _{LZOE}	$\overline{\text{OE}}$ LOW to low Z ^[9]	1	–	ns
t _{HZOE}	$\overline{\text{OE}}$ HIGH to high Z ^[9]	–	5	ns
t _{LZCE}	$\overline{\text{CE}}_1$, $\overline{\text{CE}}_2$, and $\overline{\text{CE}}_3$ LOW to low Z ^[9]	3	–	ns
t _{HZCE}	$\overline{\text{CE}}_1$, $\overline{\text{CE}}_2$, or $\overline{\text{CE}}_3$ HIGH to high Z ^[9]	–	5	ns
t _{PU}	$\overline{\text{CE}}_1$, $\overline{\text{CE}}_2$, and $\overline{\text{CE}}_3$ LOW to power-up ^[10]	0	–	ns
t _{PD}	$\overline{\text{CE}}_1$, $\overline{\text{CE}}_2$, or $\overline{\text{CE}}_3$ HIGH to power-down ^[10]	–	8	ns
t _{DBE}	Byte Enable to Data Valid	–	5	ns
t _{LZBE}	Byte Enable to low Z ^[9]	1	–	ns
t _{HZBE}	Byte Disable to high Z ^[9]	–	5	ns
Write Cycle ^[11, 12]				
t _{WC}	Write Cycle Time	8	–	ns
t _{SCE}	$\overline{\text{CE}}_1$, $\overline{\text{CE}}_2$, and $\overline{\text{CE}}_3$ LOW to Write End	6	–	ns
t _{AW}	Address Set-up to Write End	6	–	ns
t _{HA}	Address Hold from Write End	0	–	ns
t _{SA}	Address Set-up to Write Start	0	–	ns
t _{PWE}	$\overline{\text{WE}}$ Pulse Width	6	–	ns
t _{SD}	Data Set-up to Write End	5	–	ns
t _{HD}	Data Hold from Write End	0	–	ns
t _{LZWE}	$\overline{\text{WE}}$ HIGH to low Z ^[13]	3	–	ns
t _{HZWE}	$\overline{\text{WE}}$ LOW to high Z ^[13]	–	5	ns
t _{BW}	Byte Enable to End of Write	6	–	ns

Notes

- Test conditions assume signal transition time of 3 ns or less, timing reference levels of 1.5 V, input pulse levels of 0 to 3.0 V, and output loading of the specified $I_{\text{OL}}/I_{\text{OH}}$ and transmission line loads. Test conditions for the read cycle use output loading as shown in part (a) of the Figure 2, unless specified otherwise.
- This part has a voltage regulator which steps down the voltage from 3 V to 2 V internally. t_{power} time has to be provided initially before a read/write operation is started.
- t_{HZOE} , t_{HZCE} , t_{HZWE} , t_{HZBE} , and t_{LZOE} , t_{LZCE} , t_{LZWE} , t_{LZBE} are specified with a load capacitance of 5 pF as in part (b) of Figure 2. Transition is measured ± 200 mV from steady-state voltage.
- These parameters are guaranteed by design and are not tested.
- The internal write time of the memory is defined by the overlap of $\overline{\text{CE}}_1$, $\overline{\text{CE}}_2$, and $\overline{\text{CE}}_3$ LOW and $\overline{\text{WE}}$ LOW. The chip enables must be active and $\overline{\text{WE}}$ must be LOW to initiate a write, and the transition of any of these signals can terminate the write. The input data set-up and hold timing should be referenced to the leading edge of the signal that terminates the write.
- The minimum write cycle time for Write Cycle No. 3 ($\overline{\text{WE}}$ controlled, $\overline{\text{OE}}$ LOW) is the sum of t_{HZWE} and t_{SD} .
- t_{HZOE} , t_{HZCE} , t_{HZWE} , t_{HZBE} , and t_{LZOE} , t_{LZCE} , t_{LZWE} , t_{LZBE} are specified with a load capacitance of 5 pF as in part (b) of Figure 2 on page 5. Transition is measured ± 200 mV from steady-state voltage.

Switching Waveforms

Figure 3. Read Cycle No. 1 [14, 15]

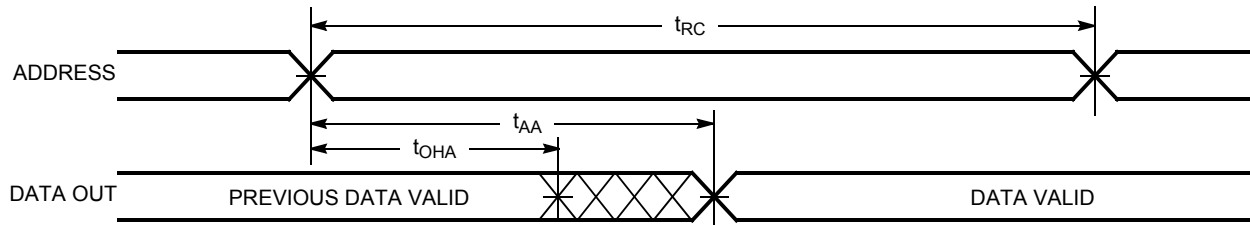


Figure 4. Read Cycle No. 2 (\overline{OE} Controlled) [15, 16, 17]

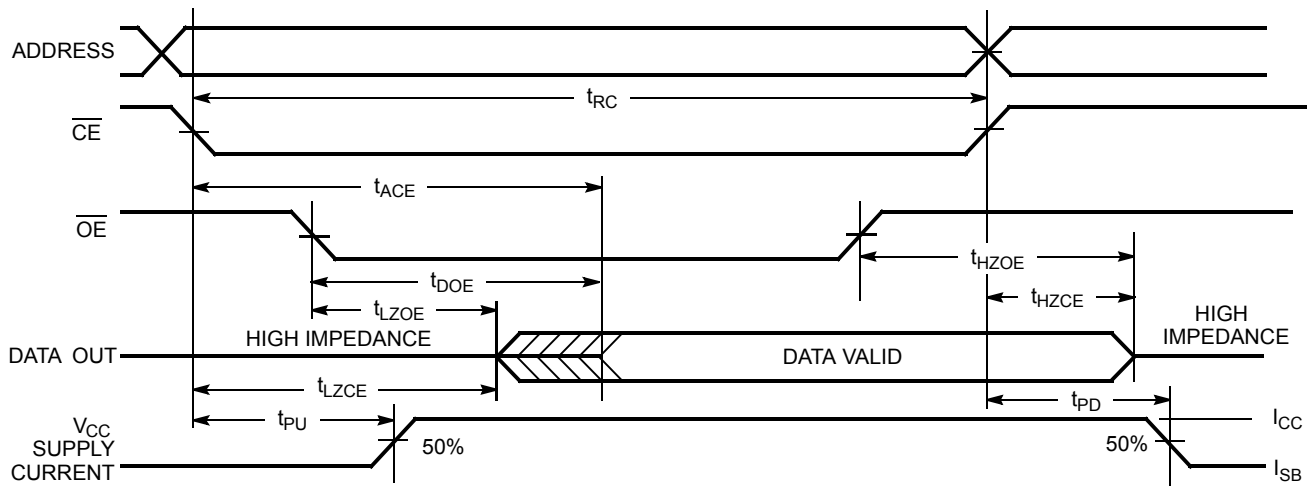
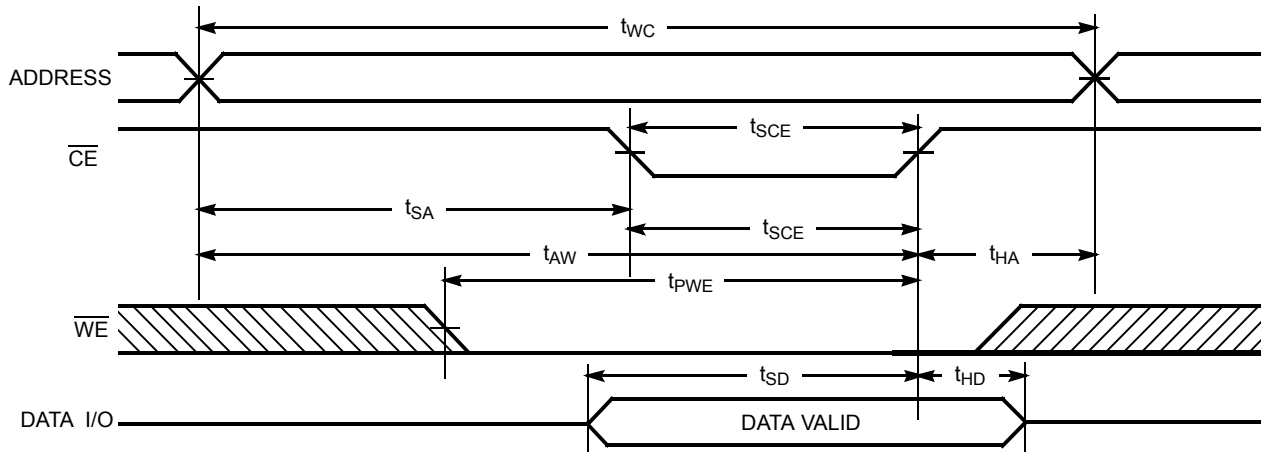


Figure 5. Write Cycle No. 1 (\overline{CE} Controlled) [17, 18, 19]



Notes

14. Device is continuously selected. \overline{OE} , $\overline{CE} = V_{IL}$.
15. \overline{WE} is HIGH for read cycle.
16. Address valid prior to or coincident with \overline{CE} transition LOW.
17. \overline{CE} refers to a combination of \overline{CE}_0 , \overline{CE}_1 , and \overline{CE}_2 . \overline{CE} is active LOW when all three of these signals are active LOW at the same time.
18. Data I/O is high impedance if $\overline{OE} = V_{IH}$.
19. If \overline{CE} goes HIGH simultaneously with \overline{WE} going HIGH, the output remains in a high-impedance state.

Switching Waveforms (continued)

Figure 6. Write Cycle No. 2 (\overline{WE} Controlled, \overline{OE} HIGH During Write) [20, 21]

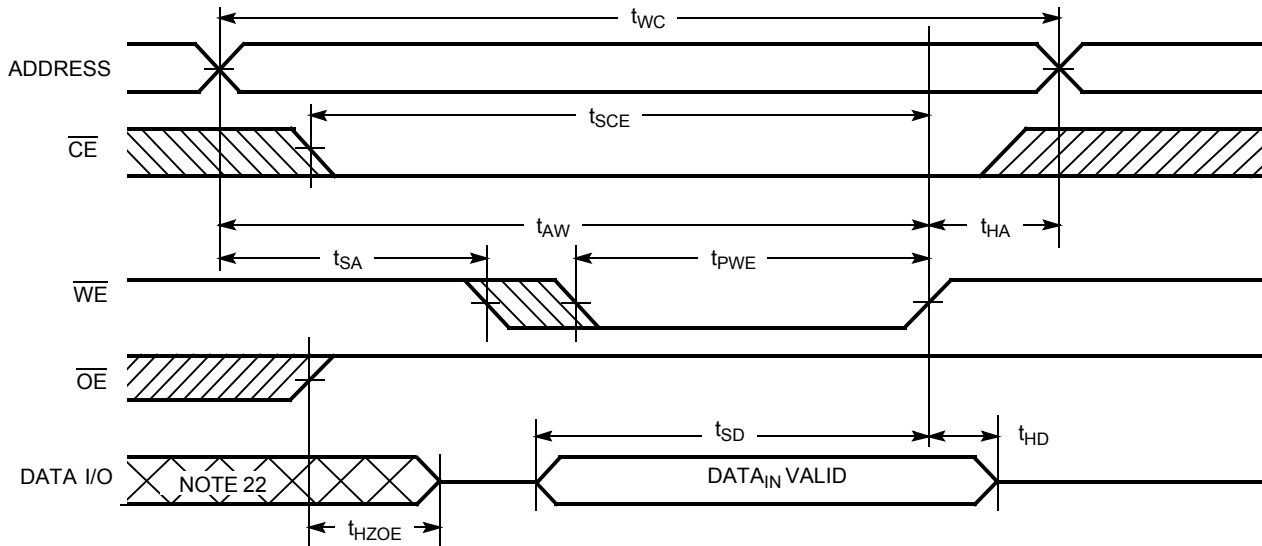
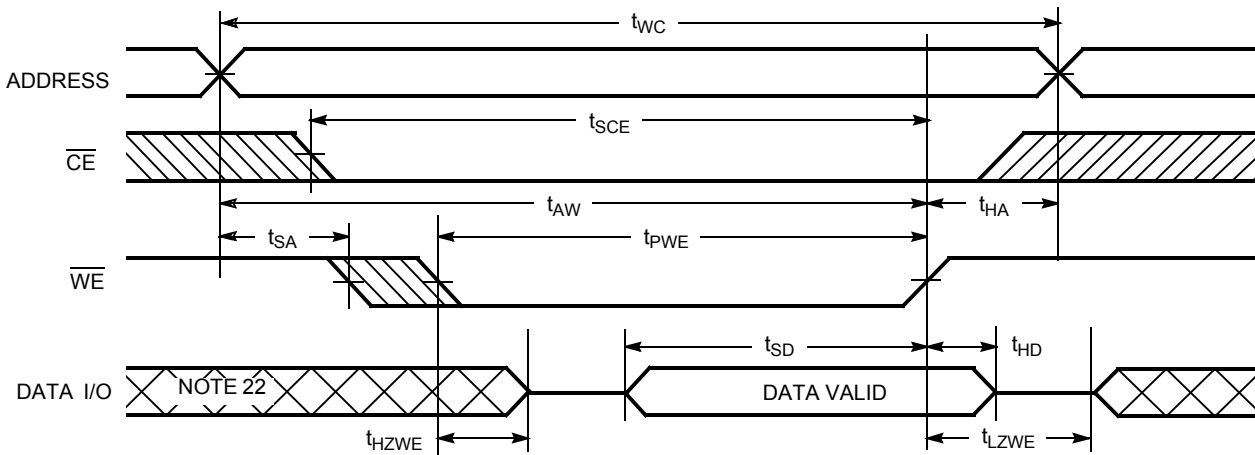


Figure 7. Write Cycle No. 3 (\overline{WE} Controlled, \overline{OE} LOW) [21, 23]



Notes

20. Data I/O is high impedance if $\overline{OE} = V_{IH}$.

21. If \overline{CE} goes HIGH simultaneously with \overline{WE} going HIGH, the output remains in a high-impedance state.

22. During this period the I/Os are in the output state and input signals should not be applied.

23. \overline{CE} refers to a combination of \overline{CE}_0 , \overline{CE}_1 , and \overline{CE}_2 . \overline{CE} is active LOW when all three of these signals are active LOW at the same time.

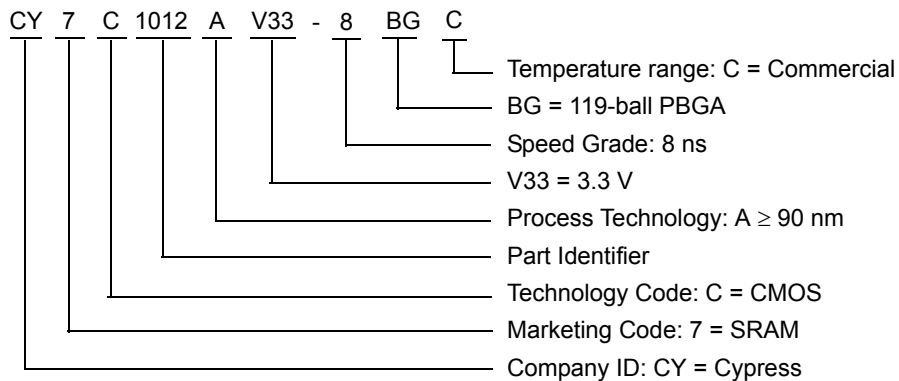
Truth Table

CE ₀	CE ₁	CE ₂	OE	WE	I/O ₀ –I/O ₂₃	Mode	Power
H	H	H	X	X	High Z	Power-down	Standby (I _{SB})
L	H	H	L	H	I/O ₀ –I/O ₇ Data Out	Read	Active (I _{CC})
H	L	H	L	H	I/O ₈ –I/O ₁₅ Data Out	Read	Active (I _{CC})
H	H	L	L	H	I/O ₁₆ –I/O ₂₃ Data Out	Read	Active (I _{CC})
L	L	L	L	H	Full Data Out	Read	Active (I _{CC})
L	H	H	X	L	I/O ₀ –I/O ₇ Data In	Write	Active (I _{CC})
H	L	H	X	L	I/O ₈ –I/O ₁₅ Data In	Write	Active (I _{CC})
H	H	L	X	L	I/O ₁₆ –I/O ₂₃ Data In	Write	Active (I _{CC})
L	L	L	X	L	Full Data In	Write	Active (I _{CC})
L	L	L	H	H	High Z	Selected, Outputs Disabled	Active (I _{CC})

Ordering Information

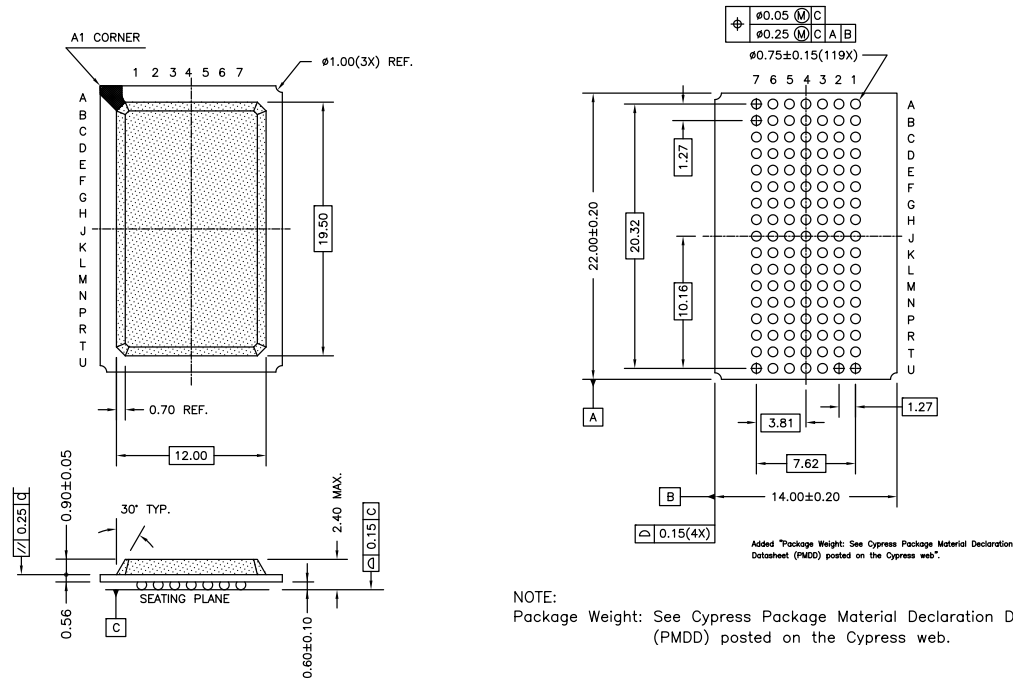
Speed (ns)	Ordering Code	Package Diagram	Package Type	Operating Range
8	CY7C1012AV33-8BGC	51-85115	119-ball (14 × 22 × 2.4 mm) PBGA	Commercial

Ordering Code Definitions



Package Diagram

Figure 8. 119-ball PBGA (14 × 22 × 2.4 mm) BG119 Package Outline, 51-85115



51-85115 *D

Acronyms

Acronym	Description
CMOS	Complementary Metal Oxide Semiconductor
$\overline{\text{CE}}$	Chip Enable
I/O	Input/Output
$\overline{\text{OE}}$	Output Enable
PBGA	Plastic Ball Grid Array
SRAM	Static Random Access Memory
TTL	Transistor-Transistor Logic
$\overline{\text{WE}}$	Write Enable

Document Conventions

Units of Measure

Symbol	Unit of Measure
°C	degree Celsius
MHz	megahertz
μA	microampere
mA	milliampere
mm	millimeter
ms	millisecond
mV	millivolt
mW	milliwatt
ns	nanosecond
%	percent
pF	picofarad
V	volt
W	watt

Document History Page

Document Title: CY7C1012AV33, 512 K × 24 Static RAM Document Number: 38-05254				
Rev.	ECN No.	Issue Date	Orig. of Change	Description of Change
**	113711	03/11/02	NSL	New data sheet.
*A	117057	07/31/02	DFP	Removed 15-ns bin
*B	117988	09/03/02	DFP	Added 8-ns bin
*C	118992	09/19/02	DFP	Change Cin (input capacitance) from 6 pF to 8 pF Change Cout (output capacitance) from 8 pF to 10 pF
*D	120382	11/15/02	DFP	Final data sheet. Added note 4 to "AC Test Loads and Waveforms"
*E	492137	See ECN	NXR	Removed 12 ns speed bin from product offering Included note #1 and 2 on page #2 Changed the description of I_{IX} from Input Load Current to Input Leakage Current in DC Electrical Characteristics table Updated Ordering Information Table
*F	2896044	03/19/2010	AJU	Updated Ordering Information Table Updated Package Diagram Added Sales, Solutions, and Legal Information
*G	3097955	11/30/2010	PRAS	Added Ordering Code Definitions . Added Acronyms and Units of Measure . Minor edits.
*H	3086499	06/07/2011	AJU	Updated Selection Guide (Removed -10 column). Updated DC Electrical Characteristics (Removed -10 column). Updated AC Switching Characteristics (Removed -10 column). Updated in new template.
*I	4212876	12/06/2013	VINI	Updated Package Diagram : spec 51-85115 – Changed revision from *C to *D. Updated in new template. Completing Sunset Review.
*J	4573215	11/18/2014	VINI	Added related documentation hyperlink in page 1.

Sales, Solutions, and Legal Information

Worldwide Sales and Design Support

Cypress maintains a worldwide network of offices, solution centers, manufacturer's representatives, and distributors. To find the office closest to you, visit us at [Cypress Locations](#).

Products

Automotive	cypress.com/go/automotive
Clocks & Buffers	cypress.com/go/clocks
Interface	cypress.com/go/interface
Lighting & Power Control	cypress.com/go/powerpsoc
	cypress.com/go/plc
Memory	cypress.com/go/memory
PSoC	cypress.com/go/psoc
Touch Sensing	cypress.com/go/touch
USB Controllers	cypress.com/go/USB
Wireless/RF	cypress.com/go/wireless

PSoC[®] Solutions

[psoc.cypress.com/solutions](#)
[PSoC 1](#) | [PSoC 3](#) | [PSoC 4](#) | [PSoC 5LP](#)

Cypress Developer Community

[Community](#) | [Forums](#) | [Blogs](#) | [Video](#) | [Training](#)

Technical Support

[cypress.com/go/support](#)

© Cypress Semiconductor Corporation, 2002-2014. The information contained herein is subject to change without notice. Cypress Semiconductor Corporation assumes no responsibility for the use of any circuitry other than circuitry embodied in a Cypress product. Nor does it convey or imply any license under patent or other rights. Cypress products are not warranted nor intended to be used for medical, life support, life saving, critical control or safety applications, unless pursuant to an express written agreement with Cypress. Furthermore, Cypress does not authorize its products for use as critical components in life-support systems where a malfunction or failure may reasonably be expected to result in significant injury to the user. The inclusion of Cypress products in life-support systems application implies that the manufacturer assumes all risk of such use and in doing so indemnifies Cypress against all charges.

Any Source Code (software and/or firmware) is owned by Cypress Semiconductor Corporation (Cypress) and is protected by and subject to worldwide patent protection (United States and foreign), United States copyright laws and international treaty provisions. Cypress hereby grants to licensee a personal, non-exclusive, non-transferable license to copy, use, modify, create derivative works of, and compile the Cypress Source Code and derivative works for the sole purpose of creating custom software and or firmware in support of licensee product to be used only in conjunction with a Cypress integrated circuit as specified in the applicable agreement. Any reproduction, modification, translation, compilation, or representation of this Source Code except as specified above is prohibited without the express written permission of Cypress.

Disclaimer: CYPRESS MAKES NO WARRANTY OF ANY KIND, EXPRESS OR IMPLIED, WITH REGARD TO THIS MATERIAL, INCLUDING, BUT NOT LIMITED TO, THE IMPLIED WARRANTIES OF MERCHANTABILITY AND FITNESS FOR A PARTICULAR PURPOSE. Cypress reserves the right to make changes without further notice to the materials described herein. Cypress does not assume any liability arising out of the application or use of any product or circuit described herein. Cypress does not authorize its products for use as critical components in life-support systems where a malfunction or failure may reasonably be expected to result in significant injury to the user. The inclusion of Cypress' product in a life-support systems application implies that the manufacturer assumes all risk of such use and in doing so indemnifies Cypress against all charges.

Use may be limited by and subject to the applicable Cypress software license agreement.