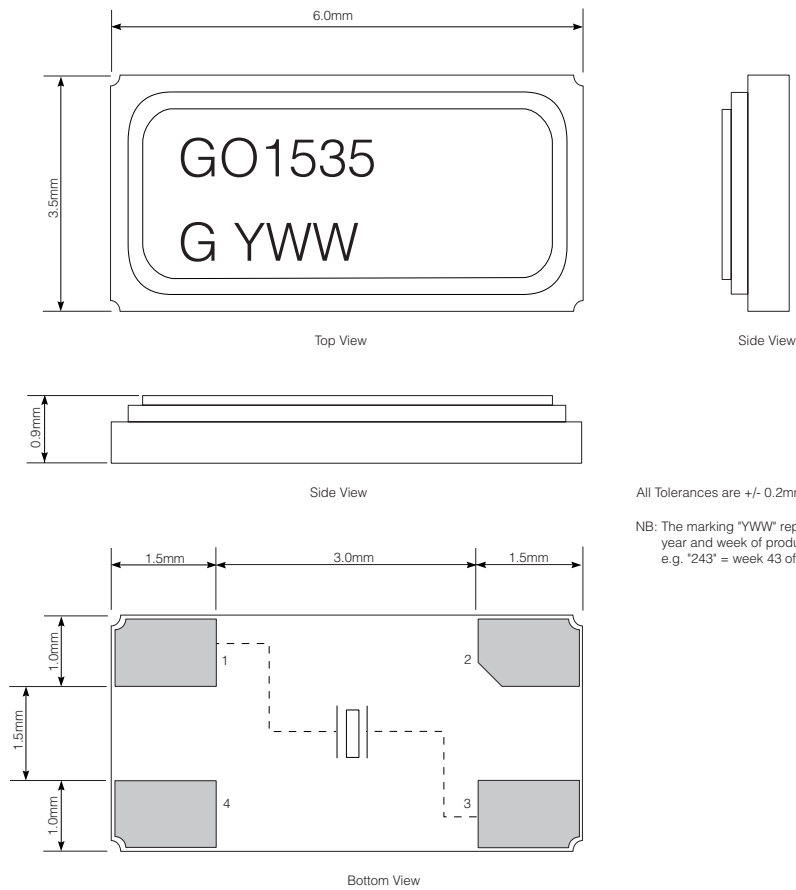


PACKAGING INFORMATION



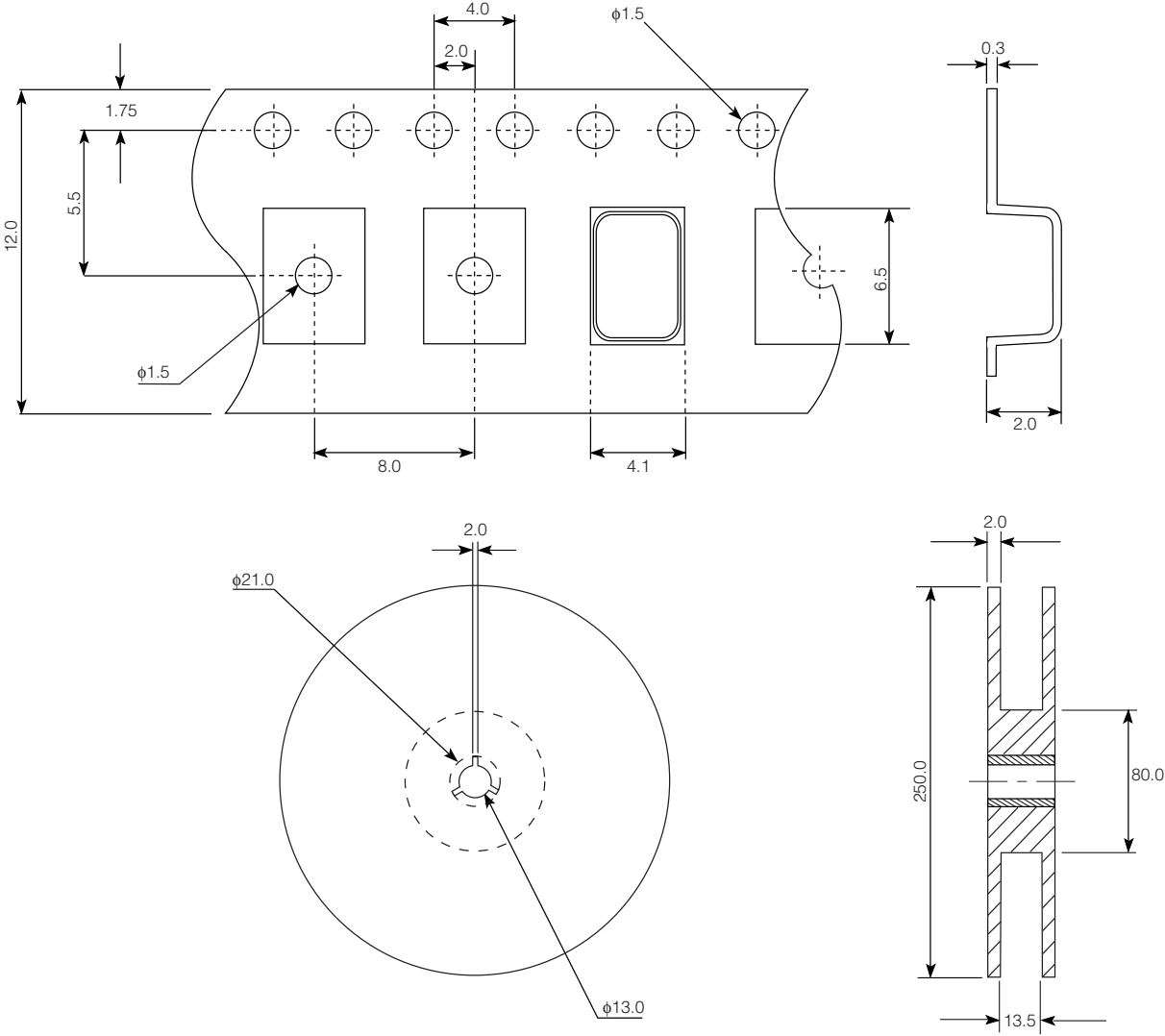
All Tolerances are +/- 0.2mm

NB: The marking "YWW" represents the year and week of production  
e.g. "243" = week 43 of 2002

Fig. 2 Package Dimensions

GO1535

PACKAGING INFORMATION (CONTINUED)



Note: All Dimensions in Millimeters.  
500 Pieces per Reel.

Fig. 3 Tape and Reel Dimensions

# SOLDER REFLOW PROFILES

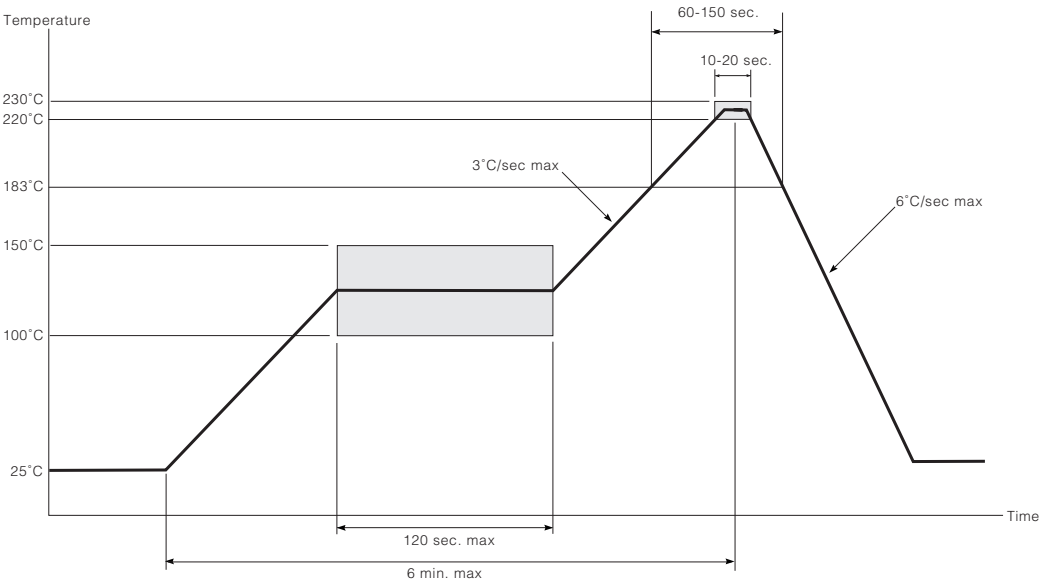


Fig. 4 Standard Eutectic Solder Reflow Profile

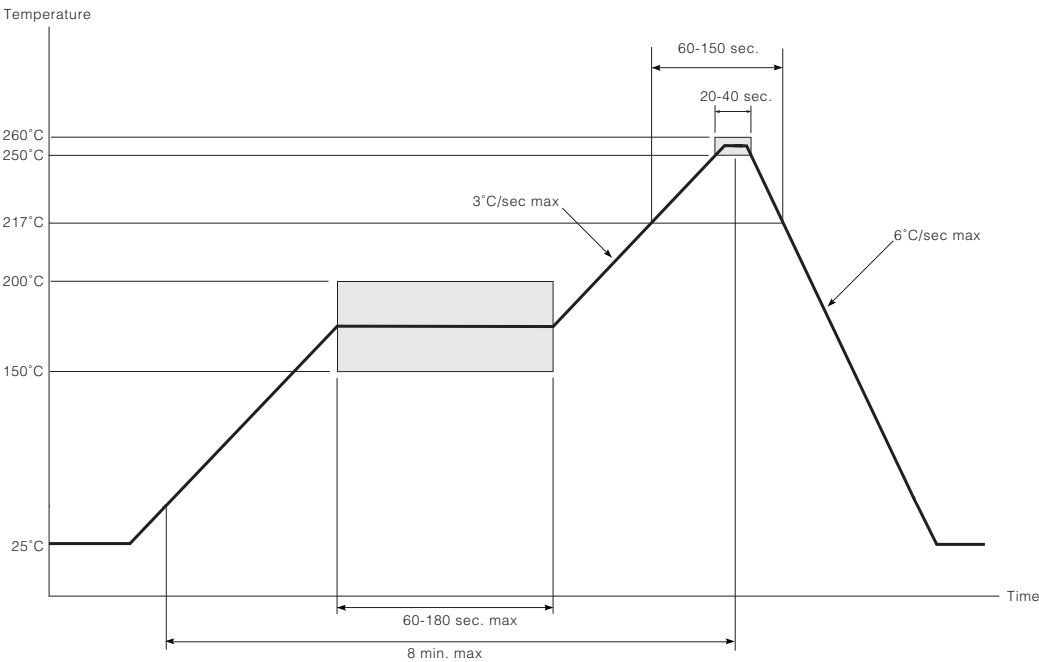


Fig. 5 Maximum Pb-free Solder Reflow Profile

**CAUTION**  
ELECTROSTATIC  
SENSITIVE DEVICES  
DO NOT OPEN PACKAGES OR HANDLE  
EXCEPT AT A STATIC-FREE WORKSTATION



#### DOCUMENT IDENTIFICATION

##### DATA SHEET

The product is in production. Gennum reserves the right to make changes at any time to improve reliability, function or design, in order to provide the best product possible.

#### REVISION NOTES:

Updated packages to reflect E3 packaging. Added 'Pb-free' bullet on front page. Added Pb-free solder reflow profile.

#### GENNUM CORPORATION

MAILING ADDRESS:  
P.O. Box 489, Stn. A, Burlington, Ontario, Canada L7R 3Y3  
Tel. +1 (905) 632-2996 Fax. +1 (905) 632-5946

SHIPPING ADDRESS:  
970 Fraser Drive, Burlington, Ontario, Canada L7L 5P5

GENNUM JAPAN CORPORATION  
Shinjuku Green Tower Building 27F, 6-14-1, Nishi Shinjuku,  
Shinjuku-ku, Tokyo, 160-0023 Japan  
Tel. +81 (03) 3349-5501, Fax. +81 (03) 3349-5505

GENNUM UK LIMITED  
25 Long Garden Walk, Farnham, Surrey, England GU9 7HX  
Tel. +44 (0)1252 747 000 Fax +44 (0)1252 726 523

Gennum Corporation assumes no responsibility for the use of any circuits described herein and makes no representations that they are free from patent infringement.

© Copyright July 2002 Gennum Corporation. All rights reserved. Printed in Canada.