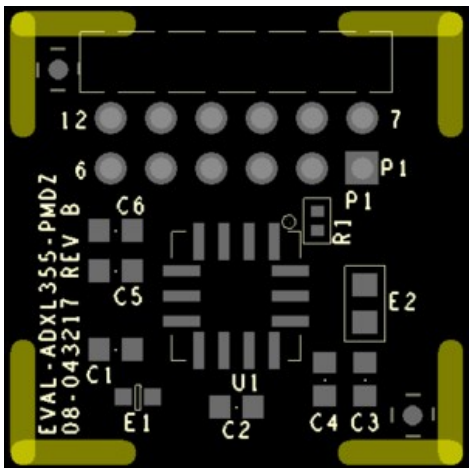


interface types were standardized by Digilent, which is now a division of National Instruments. Complete details on the PMOD specification can be found [here](#).

The specific interface used for the EVAL-ADXL355-PMDZ boards is the extended SPI. In general ADI has adopted the extended SPI connector for all PMOD devices which have an SPI interface. It provides flexibility to add interrupts, general purpose I/O, resets, and other important digitally controlled functions.

P1 Pin Number	Pin Function	Mnemonic
Pin 1	Chip Select	/CS
Pin 2	Master Out Slave In	MOSI
Pin 3	Master In Slave Out	MISO
Pin 4	Serial Clock	SCLK
Pin 5	Digital Ground	DGND
Pin 6	Digital Power	VDD
Pin 7	Interrupt 1	INT1
Pin 8	Not Connected	NC
Pin 9	Interrupt 2	INT2
Pin 10	Data Ready	DRDY
Pin 11	Digital Ground	DGND
Pin 12	Digital Power	VDD




ADXL355 Interrupt Pins

The EVAL-ADXL355-PMDZ has two interrupt pins and a data ready pin which can be used as external indicators for the user. The interrupt pins can be programmed through software to reflect various status flags within the ADXL355, and those pins are accesible through the SPI PMOD header. For complete details on the individual status flags, what they mean, and how to program the chip to reflect those interrupts, please consult the datasheet at [ADXL355](#).

Software examples

- [ADXL355 Demo](#)

Schematics, PCB Layout, Bill of Materials



- [Schematics](#) (PDF)
- [Bill of Materials](#) (Excel)
- [Layout Gerbers](#) (ZIP)
- [Assembly Drawing](#) (PDF)

15,000

Problem Solvers

4,700+

Patents

125,000

Customers

50+

Years

Ahead of What's Possible

ADI enables our customers to interpret the world around us by intelligently bridging the physical and digital with unmatched technologies that sense, measure and connect. We collaborate with our customers to accelerate the pace of innovation and create breakthrough solutions that are ahead of what's possible.

[See the Innovations](#)

Analog Devices. Dedicated to solving the toughest engineering challenges.

SOCIAL



QUICK LINKS

[About ADI](#)

[Careers](#)

[Investor Relations](#)

[Quality & Reliability](#)

[Analog Dialogue](#)

[Contact us](#)

[News Room](#)

[Sales & Distribution](#)

LANGUAGES

[English](#)

[简体中文](#)

[日本語](#)

[Русский](#)

NEWSLETTER

Interested in the latest news and articles about ADI products, design tools, training and events? Choose from one of our 12 newsletters that match your product area of interest, delivered monthly or quarterly to your inbox.

[Sign Up](#)