

PL-1200RG-N SERIES

Plastic Shell Auto-Coupling Connectors

78 Pole Capacity Interconnect System

TABLE B:

STANDARD PART NUMBERS

Number of Poles	Disposable Receptacle	Panel-Mount Receptacle		In-Line Plug
		Solder Cup See Panel 3	PCB See Panel 2	
78	380588	380700	380707	380000
59	380532	380728	380735	380056
52	380504	380756	380763	380112
45	380476	380784	380791	380168
26	380448	380812	380819	380224
19	380420	380840	380847	380280

Note: Part numbers cover black housings in Key 1 configuration. For other color and housing options utilize the Alden connector configurator located @ www.aldenproducts.com/configurator

Options Include:

Housing Color Options

Mating Key Options

Panel-Mount Thickness Options

Black, Gray, White, Blue, Red, Green, Yellow

2 Standard Keys, Proprietary Keys Available

Up to .187 Standard

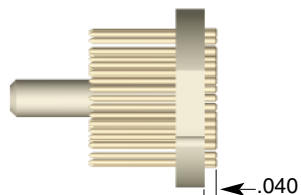
CONTACT TERMINATION OPTIONS

PCB Terminations

Disposable Receptacle & In-Line Plug

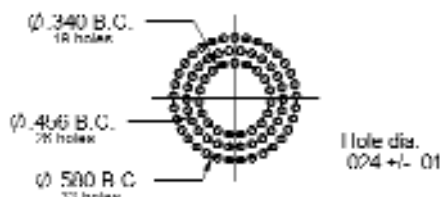
Panel 1

Pin Length & Application



Intended for termination to flex circuit

Flex Circuit Mounting Template



Flex Circuit Benefits

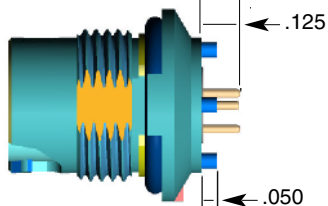
- Facilitates the automated internal application of passive and active electronic components.
- Facilitates the introduction of automated mass termination techniques. These termination methods are extremely cost effective when terminating 78 pole connectors.

PCB Terminations

Panel-Mount Receptacle

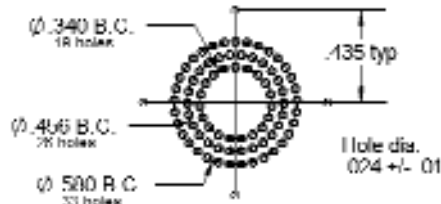
Panel 2

Pin Length & Application

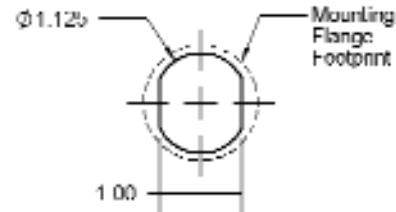


Intended for mounting on rigid PC Board

Printed Circuit Board Mounting Template



Panel-Mount, Cut-Out Template



Solder Terminations

Disposable Receptacle, PanelMount Receptacle, & In-Line Plug

Panel 3

Solder Cup



For wires up to 26 AWG

Tiered solder cups provide easy access to center positions

Canted cups facilitate quick and easy wire positioning

For additional information about this, or any other Alden product, please contact an Alden Products specialist today.

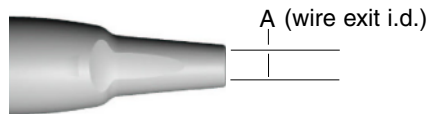
Phone: 508-427-7000
Fax: 508-583-0164
www.aldenproducts.com

ACCESSORIES

TABLE C:

DISPOSABLE RECEPTACLE BACKSHELLS

Disposable Receptacle Backshell



Standard color is black. Gray is optional.

Dimension A

0.260"

0.260"

Color

Black

Gray

Alden P/N

107802-01

107802-02

Disposable Receptacle Backshell -

In applications where the disposable receptacle is attached directly to a cable or catheter this one piece backshell is available to protect light gauge wire terminations and provide an anchor point for the catheter jacket. These backshells snap into place and may be encapsulated.

Disposable Receptacle Accessories



Description

Bulkhead Seal

Hex Mounting Nut

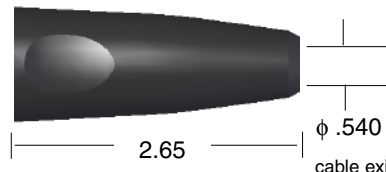
Part Number

107912

107911

Disposable Receptacle Mounting Accessories -

For applications where the disposable receptacle housing is mounted directly onto an enclosure or hand piece an o-ring seal is available to environmentally secure this interface. A light weight hex nut is also available for mounting this housing to a panel.



Alden P/N 108552-01

Standard material is black PVC

Completes PL-1200 Plug Assembly

Panel-Mount Receptacle Dust Cover



Alden P/N 109767-01 (Consult Factory)

Standard color is black. Gray optional

Panel-Mount Receptacle Dust Cover -

The PL-1200 Series receptacle dust cover protects the receptacles contact system from dust, moisture, and mechanical stress when the connector pair is disengaged. When secured the dust cover will provide an IP-67 environmental seal. The cover is equipped with a tether for security.

Plug Soaking Cap



Alden P/N 109766-01 (Consult Factory)

Standard color is black. Gray optional

Plug Soaking Cap -

The PL-1200 Series Plug Soaking Cap is designed to protect the plug's contact system when a cable assembly is being cleaned or not in use. The soaking cap locks onto the plug providing an IP-67 seal that is ideal for soaking in liquid disinfectants. The soaking cap can be permanently attached to a cable assembly by means of a light weight tether.

CONNECTOR ASSEMBLY TOOLS

Disposable Receptacle



1 Receptacle Housing
2 Pin Insert

In-Line Plug



1 Plug Core
2 Plug Housing Assembly

Assembly instructions available at: www.aldenproducts.com

Receptacles

Item	Alden P/N	Description	Application
1	T-881	Installation Tool, Hand	Pin Insulator to Housing
2	T-904	Installation Tool, Arbor	Pin Insulator to Housing
3	T-882	Installation Tool, Arbor	Backshell to Housing
4	T-924	Soldering Fixture/Template	Pin Identification and Termination
5	390049	Solder Fixture	Fastening Panel-Mount Spanner Ring

In-Line Plug

Item	Alden P/N	Description	Application
1	T-883	Installation Tool, Arbor	Contact Insulator to Housing
2	T-923	Soldering Fixture/Template	Contact Identification and Termination
2	T-915	Installation Tool, Arbor	Backshell to Housing

For additional information about this, or any other Alden product, please contact an Alden Products specialist today.

Phone: 508-427-7000
Fax: 508-583-0164
www.aldenproducts.com