



# PRELIMINARY DATA SHEET

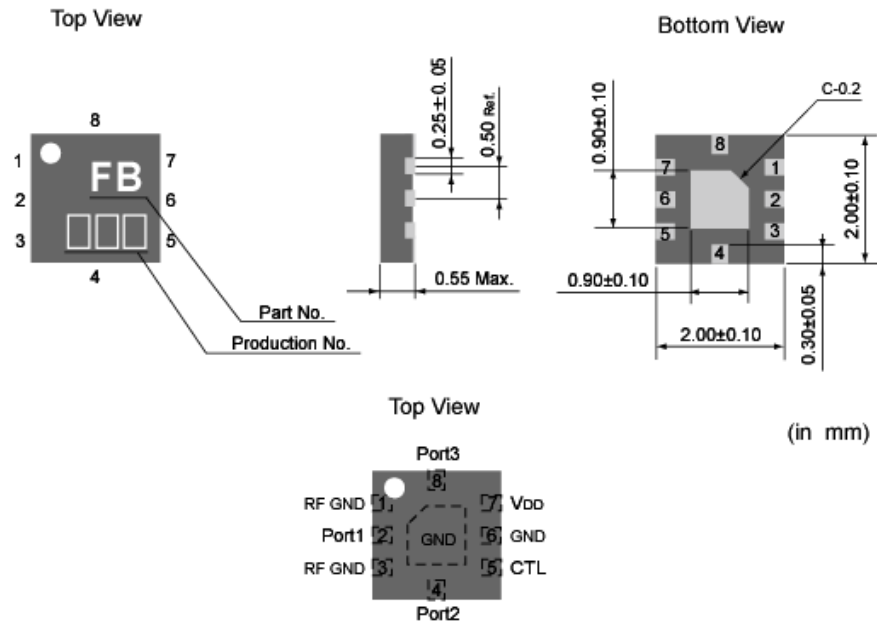
## XM0830SM-BL0901

DS0830SM-01A

□ Electrical Specifications (Ta=25°C, VDD=2.6V, VCTL(H)=1.8V, VCTL(L)=0V, C4,5=4pF)

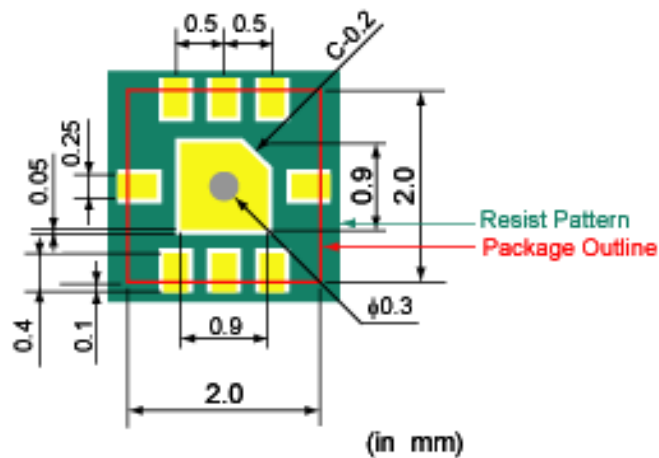
Symbol	Parameter	Conditions	Min.	Typ.	Max.	Unit
IDD	Current Consumption	-	-	80	200	μA
f <sub>0</sub>	Operation Frequency	-	0.8	-	2.5	GHz
IL	Insertion Loss (Port1-Port2,3)	-	-	0.25	0.50	dB
ISO	Isolation (Port1-Port2,3)	1.0~2.0GHz	25.0	29.0	-	dB
P <sub>in</sub> 0.5dB	Input Power for 0.5dB Compression	2.0GHz	32.0	33.0	-	dBm

### Package Outline and Pin Connections



(in mm)

### Land Pattern



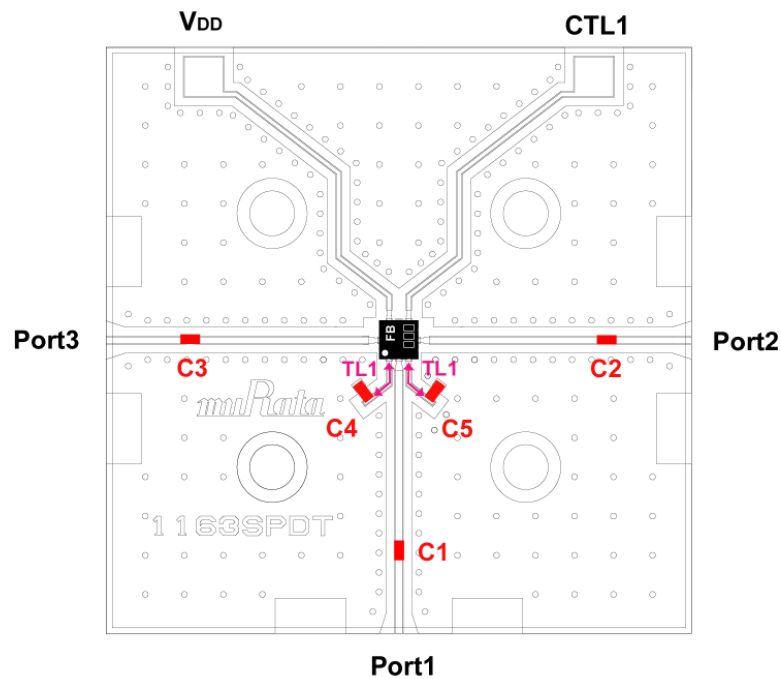
(in mm)

### Truth Table

Path	V <sub>DD</sub>	CTL
Port1-Port2	H	L
Port1-Port3	H	H

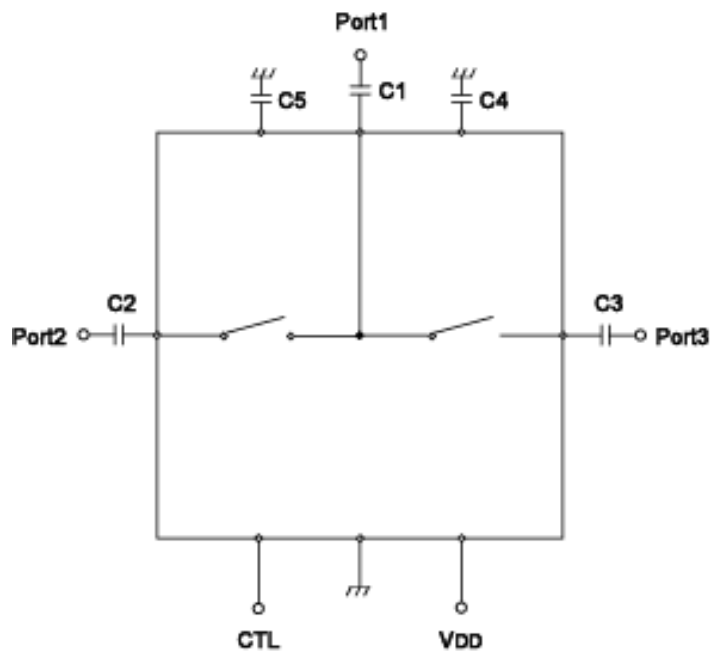
H: 2.0 to 4.0V(V<sub>DD</sub>), 1.5 to 4.0V(CTL)  
L: 0V

### Evaluation Board



### Parts List

Part No.	Products	Value	Substrate
C1-C3	GRM155(Murata)	47 pF	Transmission Line: 50Ω
C4,C5		4pF	Material :FR4 (ε <sub>r</sub> = 4.4) Size : 30mm x 30mm Thickness : 0.2mm + Dummy 0.4mm <b>TL1</b> Width: 0.2mm Length: 2mm

□ **Evaluation Circuit**

**CAUTION -Limitation of Applications-**

The product is designed and manufactured for consumer application only and is not available for any application listed below which requires especially high reliability for the prevention of such defect as may directly cause damage to the third party's life, body or property.

- Aircraft equipment.
- Aerospace equipment.
- Undersea equipment.
- Medical equipment.
- Transportation equipment (vehicles, trains, ships, etc.).
- Traffic signal equipment.
- Disaster prevention / crime prevention equipment.
- Application of similar complexity and/ or reliability requirements to the applications listed in the above.