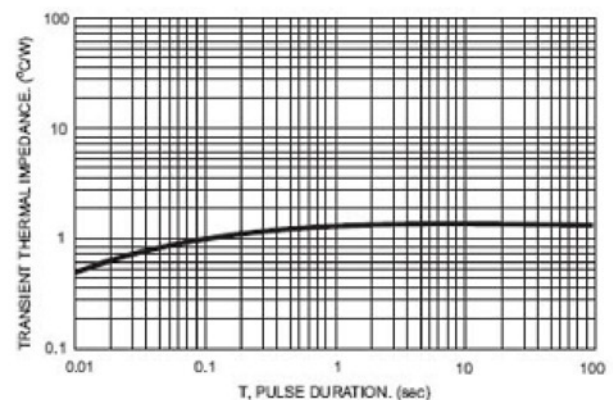
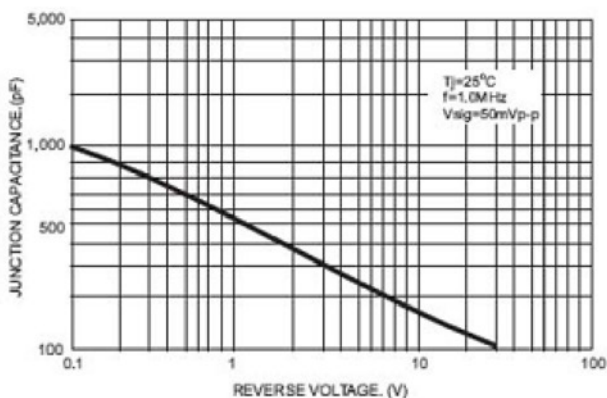
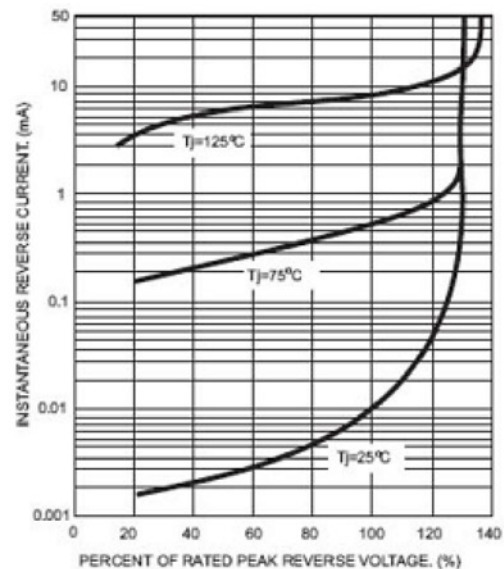
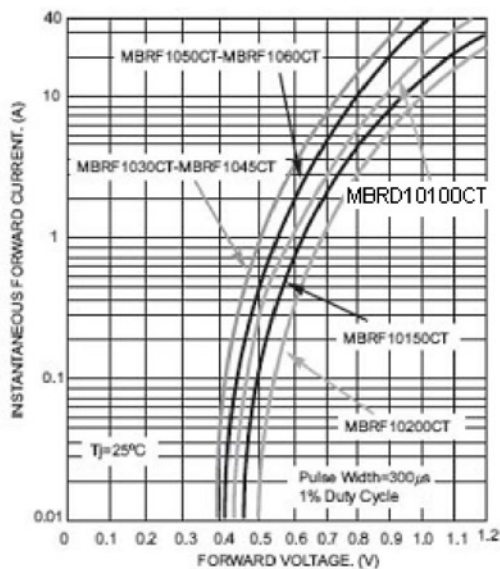
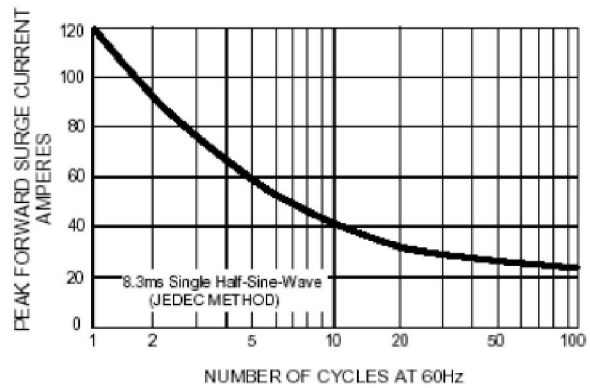
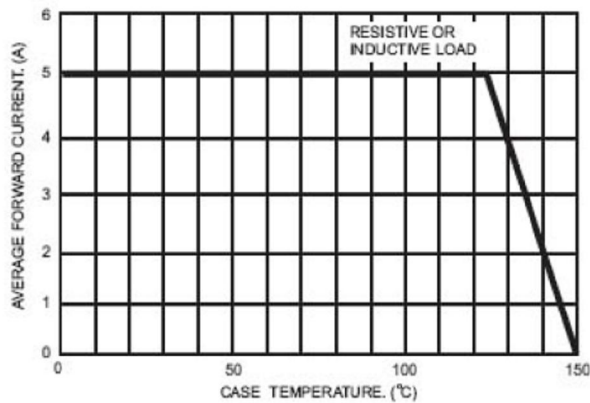


MBRD10100CT

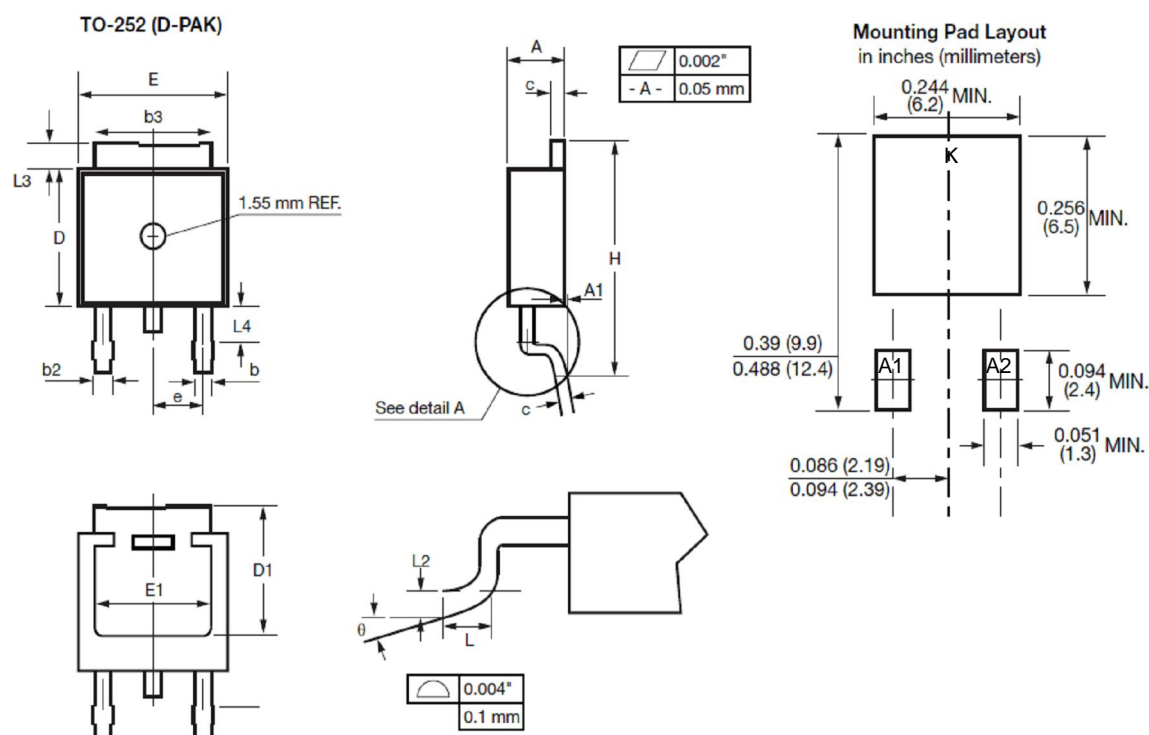
Schottky Barrier Rectifier
 Reverse Voltage 100V Forward Current 10A

Ratings and Characteristics Curves ($T_A = 25^\circ\text{C}$ unless otherwise noted)



Package Outline Dimensions

TO-252 (DPAK)



SYMBOL	INCHES		MILLIMETERS	
	MIN.	MAX.	MIN.	MAX.
A	0.086	0.094	2.19	2.38
A1	-	0.005	-	0.13
b	0.025	0.035	0.64	0.89
b2	0.033	0.045	0.84	1.14
b3	0.205	0.215	5.21	5.46
c	0.018	0.024	0.46	0.61
D	0.235	0.250	5.97	6.22
D1	0.205	-	5.21	-
E	0.250	0.265	6.35	6.73
E1	0.190	-	4.83	-
e	0.090 BSC.		2.29 BSC.	
H	0.380	0.410	9.65	10.41
L	0.055	0.070	1.40	1.78
L2	0.020 BSC.		0.51 BSC.	
L3	0.035	0.050	0.89	1.27
L4	0.025	0.039	0.64	1.01
θ	0°	8°	0°	8°

Note

- Conforms to JEDEC TO-252 variation AA except dimension "D"