

PRODUCT NUMBER	DIM	LENGTH FORMULAS (SEE NOTE 10)
51760-ABBCCDDEF_--- NOTE: ③	DIM "A"	.250 [6.35] x DD + .100 [2.54] x (CCC/4) + .250 [6.35] x BB + .650 [16.51] (NOTE 10)
SEE NOTE 1	DIM "B"	.250 [6.35] x DD + .100 [2.54] x (CCC/4) + .250 [6.35] x BB + .350 [8.89]
	DIM "C"	.250 [6.35] x DD + .100 [2.54] x (CCC/4) + .250 [6.35] x BB + .300 [7.62]
	DIM "D"	.250 [6.35] x DD + .375 [9.53]
	DIM "E"	.250 [6.35] x DD + .100 [2.54] x (CCC/4) + .450 [11.43]
	DIM "F"	.250 [6.35] x DD + .100 [2.54] x (CCC/4) + .250 [6.35] x BB + .680 [17.27]
	DIM "G"	.250 [6.35] x DD + .225 [5.72]
	DIM "H"	.250 [6.35] x DD + .100 [2.54] x (CCC/4) + .250 [6.35]

CONNECTOR NOTES

- ① PRODUCT NUMBER CODE:
51760 - A BB CCC DD E F LF
- NO THIS SUFFIX: 100u"/2.54um SnPb ON PCB INTERFACE
ADD THIS SUFFIX: 78u"/2.00um Sn OR 5u" Au ON PCB INTERFACE
RETENTION TO PCB (NOTE 8)
TAIL OPTIONS (NOTE 7)
NUMBER OF LEFT END POWER CONTACTS (NOTE 6)
NUMBER OF SIGNAL CONTACTS (NOTE 5)
NUMBER OF RIGHT POWER CONTACTS (NOTE 4)
PLATING (NOTE 3)
BASE NUMBER

- ② HOUSING MATERIAL: GLASS FILLED V-O HIGH TEMP THERMO PLASTIC.
SIGNAL CONTACT MATERIAL: COPPER ALLOY
POWER CONTACT MATERIAL: COPPER ALLOY
- ③ PLATING OPTION:
1: SEE IN PRINT 10064183 FOR PLATING SPEC OF 51760-ABBCCDDEF; 51760-ABBCCDDEFLF
- ④ RIGHT END POWER CONTACTS, 01 TO 20 AVAILABLE.
MAXIMUM OF 20 POWER CONTACTS PER CONNECTOR
- ⑤ SIGNAL CONTACTS, 004 TO 148 AVAILABLE FOR SOLDER TO BOARD.
020 TO 148 AVAILABLE FOR PRESS-FIT TO BOARD.
- ⑥ LEFT END POWER CONTACTS, 01 TO 20 AVAILABLE.
MAXIMUM OF 20 POWER CONTACTS PER CONNECTOR
- ⑦ TAIL OPTIONS:
A = .135 ±.010 [3.43 ±.25] SOLDER TO BOARD
B = .090 +.005 / -.010 [2.29 +0.13 / -.25]
SOLDER TO BOARD
C = .154 ±.010 [3.91 ±.25] PRESS-FIT TO BOARD
- ⑧ RETENTION TO PCB OPTIONS:
A = BOARD LOCK (REQUIRES .098 +.002/-.001 [2.49 +0.05/-0.03] THRU HOLE IN PCB
MOUNTING FOOT HEIGHT: .220 [5.59]
NOT AVAILABLE FOR PRESS-FIT

B = .150 [3.81] THRU HOLE (REQUIRES .158 ±0.003 [4.01 ±0.08] THRU HOLE IN PCB).
MOUNTING FOOT HEIGHT
.160 [4.06]

- ⑨ **ALWAYS AVAILABLE FOR PRESS-FIT**
MANUFACTURE'S NAME, P/N, AND DATE CODE
TO APPEAR ON THIS SURFACE.
- ⑩ THE MAXIMUM OVERALL LENGTH (DIM A) OF A PART
IS 8.00 [203.2]
11. PRODUCT SPECIFICATION GS-12-149
12. APPLICATION SPECIFICATION BUS-20-067.
13. FOR PRESS-FIT CONNECTORS USE FCI CAM TOOL 430140-XXX
TO APPLY CONNECTOR TO PCB.

PCB NOTES:

14. ALL DIMENSIONS ARE BASIC UNLESS OTHERWISE SPECIFIED.
15. ALL THROUGH HOLES ARE LOCATED WITH A
TRUE POSITION OF .004 [0.10]
16. ALL HOLE DIAMETERS ARE FINISHED HOLE SIZE.
- ⑪ $\varnothing 0.0453 \pm .001$ [1.151 ±0.02] DRILLED HOLES PLATED WITH
0.0003 [0.007] MIN SnPb OVER 0.001 [1.03] TO .003 [0.08]
PLATING TO ACHIEVE A .040 ±.003 [1.02 ±0.08] HOLE.
18. THE VOID CORING IN BETWEEN POWER MODULES, SIGNAL MODULES
AND END MODULES ARE OPTIONAL AND THE SHAPE MAY BE DIFFERENT
FOR OPTIMIZING THE MOLDING PROCESS. THE VOID CORING WILL NOT
EFFECT TO PRODUCT FUNCTION.
19. A SYMBOL WILL BE NEXT TO ANY DIMENSION, VIEW, OR NOTE
WHICH HAS BEEN MODIFIED WITH THE CURRENT DRAWING REVISION.

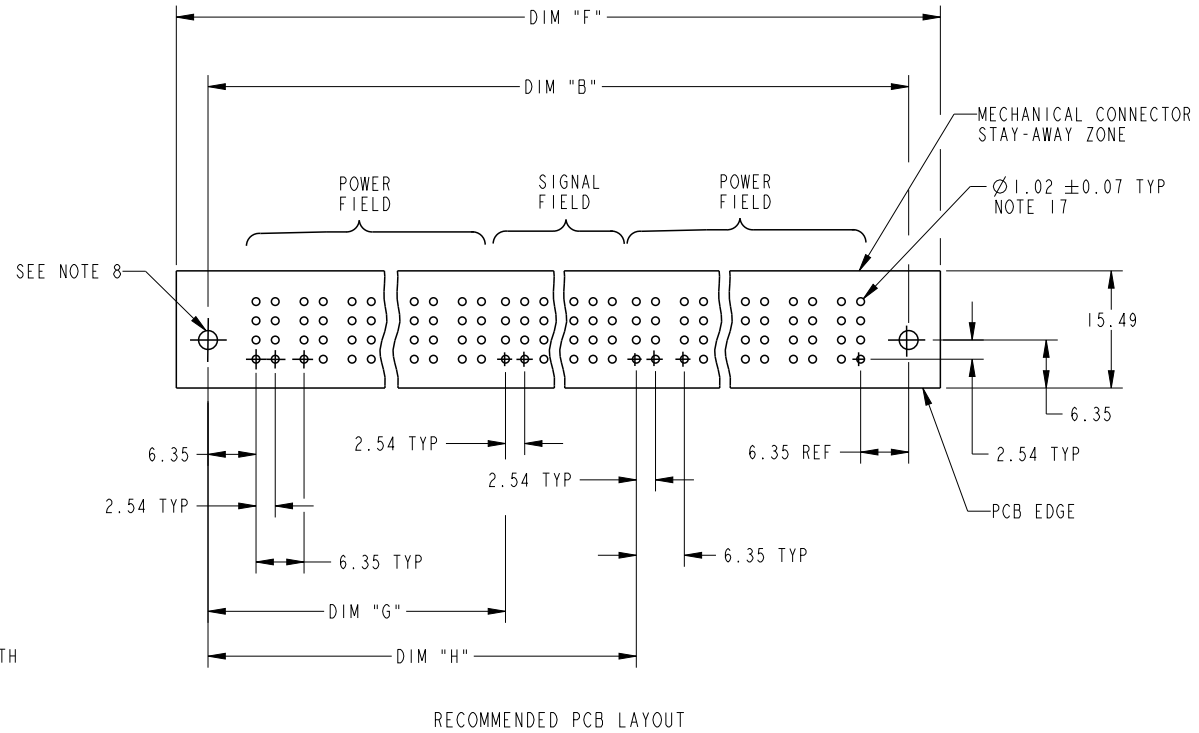
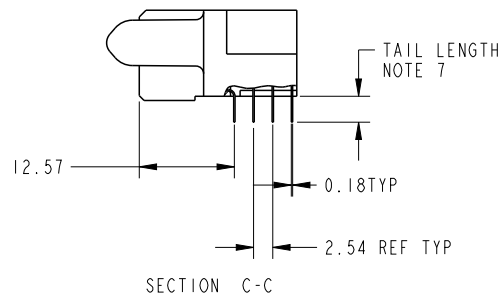
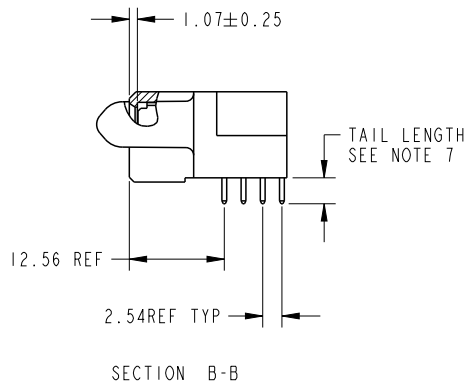
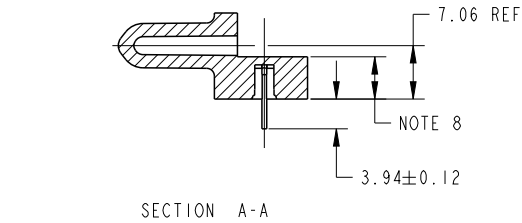
surface	linear	0.X	±0.3
		0.XX	±0.13
		0.XXX	±0.051
ISO 1302	angular	0°	±2°

dr	Julia Wang	2008/09/29
eng	Vicking Liu	2017/03/07
chr	Fancy Zhang	2017/03/07
appr	Pei-Ming Zheng	2017/03/08

projection	MM	size	A4	scale	1:2
		ecn no	ELX-DG-26294-1		
product family	PwrBlade	rel level	Released		

Amphenol FCI	title	RA REC w/GUIDE PIN			dwg no	51760		rev	N
		POWER / SIGNAL / POWER							
		cat. no.	-	Product - Customer Drw			sheet 2 of 3		

PRODUCT NUMBER
51760-ABBCCDEF_... NOTE: ③
SEE NOTE 1



dr	Julia Wang	2008/09/29	<div>projection</div> <div></div>	<div>MM</div> <div></div>	size	A4	scale	1:1		
eng	Vicking Liu	2017/03/07			ecn no	ELX-DG-26294-1				
chr	Fancy Zhang	2017/03/07			rel level	Released				
appr	Pei-Ming Zheng	2017/03/08			product family	PwrBlade				
<div>Amphenol FCI</div>			title	RA REC w/GUIDE PIN			dwg no	51760	rev	N
			POWER / SIGNAL / POWER							
			cat. no.	-	Product - Customer Drw				sheet 3 of 3	