

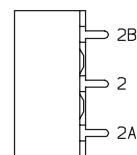
## Power & Line Voltage Select Slide Switches

NO. POLES	MODEL NO.	SWITCH FUNCTION	SCHEMATIC	AVAILABLE MOUNTING STYLES
DP	<b>V801</b>	DPST		ALL
	<b>V802</b>	DPDT		ALL

with all options.

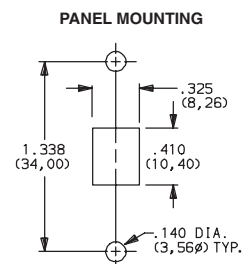
Contacts make on side actuator thrown.

- ## 14 SCREWDRIVER SLOT WITH MARKINGS



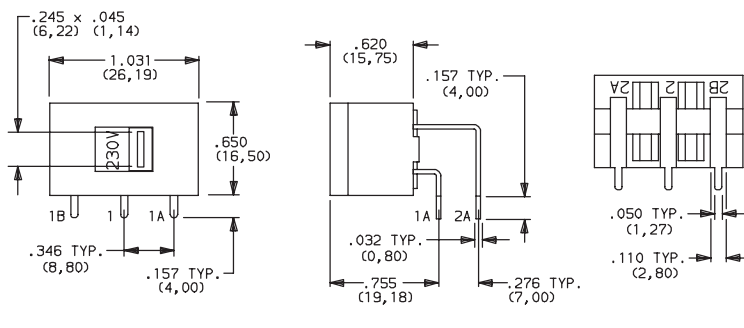
Markings are reversed on V702 and V802 models. **Note:** Orientation of actuator color is red with white markings (std.) and terminals.

- SS** PANEL WITH MOUNTING EARS



**AVAILABLE WITH:**  
**Models:** All.  
**Terminations:** 02 and 05

- MA** RIGHT ANGLE, PC THRU-HOLE



**PC MOUNTING**  
PC mount, side actuated.  
For mounting information,  
see TERMINATIONS section, page I-36.



Dimensions are shown: Inch (mm)  
Specifications and dimensions subject to change

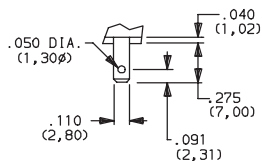
## MOUNTING STYLE

# V Series

## Power & Line Voltage Select Slide Switches

### TERMINATIONS

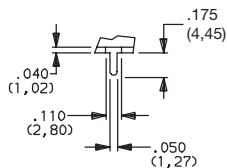
#### 05 QUICK CONNECT



.032 THK.  
(0,80)

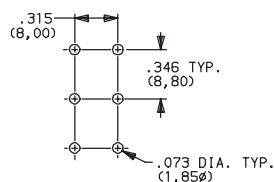
Fits .110 in. quick connector.

#### 02 PC THRU-HOLE



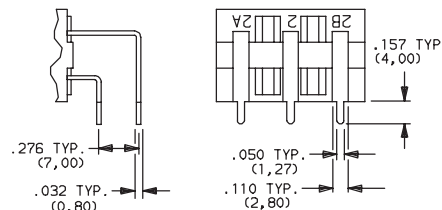
.032 THK.  
(0,80)

#### PC MOUNTING



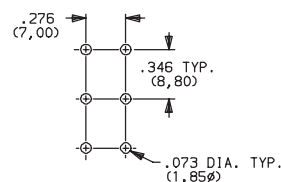
MS, SS Mounting Styles.

#### 08 PC THRU-HOLE



Not available with 'MS, SS or S2' mounting styles.

#### PC MOUNTING



MA, SL Mounting Styles.

### CONTACT MATERIAL

OPTION CODE	CONTACT MATERIAL	RATINGS	
Q	SILVER <sup>1</sup>	POWER	10 GPA @ 125 V AC 50/60 Hz T85; 5 GPA @ 250 V AC 50/60 Hz T85; 2 (0.5)A @ 250 VAC 50/60 Hz T85; 4RA @ 30 VDC T85

\* Note: See Technical Data section of this catalog for RoHS compliant and compatible definitions and specifications.

<sup>1</sup> CONTACTS & TERMINALS: Copper, silver plated (standard with all termination options).

All models



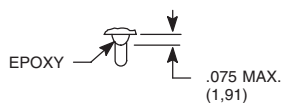
with all options.

**NOTE:** Any models supplied with Q contact material are RoHS compliant.

### SEAL

**NONE** NO SEAL

**E** EPOXY SEAL



Third Angle Projection

Dimensions are shown: Inch (mm)  
Specifications and dimensions subject to change

