

SYMBOLS & DEFINITIONS

Symbol	DEFINITION
V_{WM}	Rated stand off voltage: Maximum dc voltage that can be applied over the operating temperature range. V_{WM} must be selected to be equal or be greater than the operating voltage of the line to be protected
V_{BR}	Minimum Breakdown Voltage: The minimum voltage the device will exhibit at a specified current
V_C	Clamping Voltage: Maximum clamping voltage across the TVS device when subjected to a given current at a pulse time of 20 μs .
I_D	Standby Current: Leakage current at V_{WM} .
C	Capacitance: Capacitance of the TVS as defined @ 0 volts at a frequency of 1 MHz and stated in Pico Farads.

GRAPHS

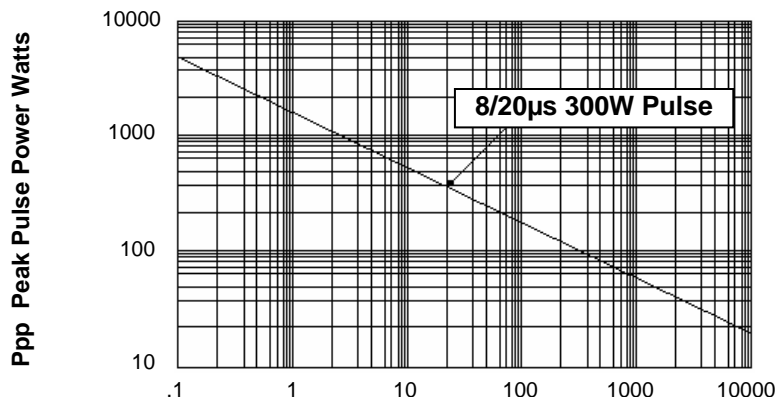


FIGURE 1
Peak Pulse Power Vs Pulse Time $t = \mu s$

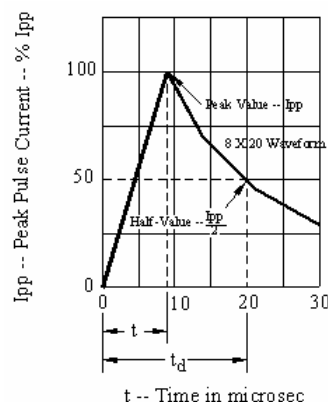
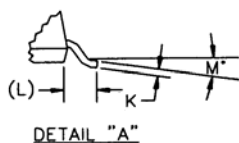
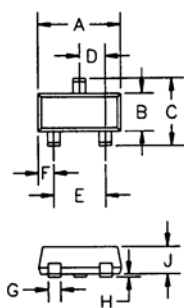
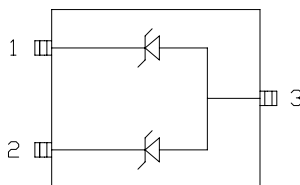
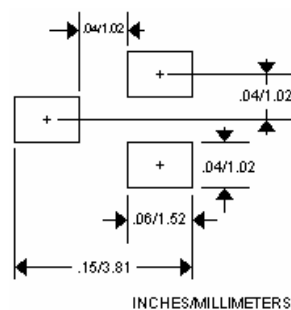


FIGURE 2
Pulse Wave Form

PACKAGING AND SCHEMATIC



DIM*	DIMENSIONS (1)				NOTE
	INCHES		MM		
A	.110	.119	2.8	3.04	—
B	.047	.055	1.20	1.40	—
C	.083	.104	2.10	2.64	—
D	.035	.040	0.88	1.02	—
E	.070	.081	1.78	2.05	—
F	.017	.024	.44	.60	—
G	.014	.020	.37	.51	—
H	.0005	.004	.013	0.10	—
J	.034	.040	.87	1.02	—
K	.003	.007	.085	.180	—
L	—	.022	—	0.55	REF
M	0	8"	0	8"	—



SCHEMATIC