

# LTC2050/LTC2050HV

## ABSOLUTE MAXIMUM RATINGS

(Note 1)

Total Supply Voltage ( $V^+$  to  $V^-$ )

LTC2050 ..... 7V

LTC2050HV ..... 12V

Input Voltage ..... ( $V^+ + 0.3V$ ) to ( $V^- - 0.3V$ )

Output Short-Circuit Duration ..... Indefinite

Operating Temperature Range

LTC2050 .....  $-40^{\circ}\text{C}$  to  $125^{\circ}\text{C}$

LTC2050HVMP .....  $-55^{\circ}\text{C}$  to  $150^{\circ}\text{C}$

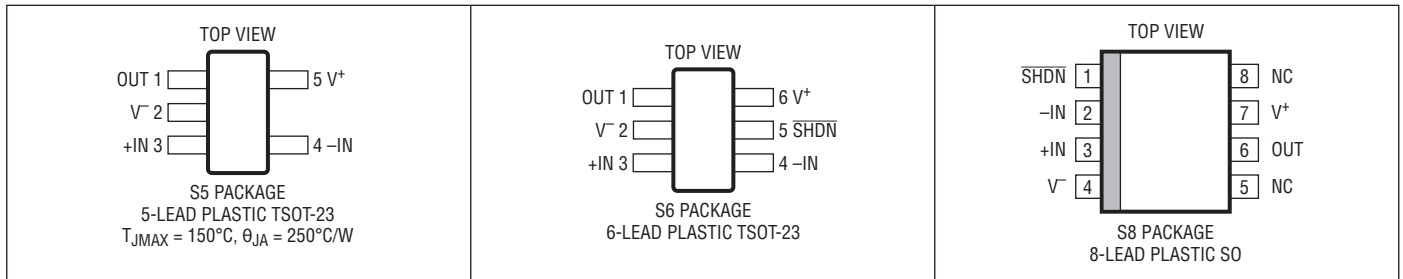
Specified Temperature Range

(Note 3) .....  $-55^{\circ}\text{C}$  to  $150^{\circ}\text{C}$

Storage Temperature Range .....  $-65^{\circ}\text{C}$  to  $150^{\circ}\text{C}$

Lead Temperature (Soldering, 10 sec) .....  $300^{\circ}\text{C}$

## PIN CONFIGURATION



## ORDER INFORMATION

LEAD FREE FINISH	TAPE AND REEL	PART MARKING*	PACKAGE DESCRIPTION	SPECIFIED TEMPERATURE RANGE
LTC2050CS5#PBF	LTC2050CS5#TRPBF	LTAEG	5-Lead Plastic TSOT-23	$0^{\circ}\text{C}$ to $70^{\circ}\text{C}$
LTC2050IS5#PBF	LTC2050IS5#TRPBF	LTAEG	5-Lead Plastic TSOT-23	$-40^{\circ}\text{C}$ to $85^{\circ}\text{C}$
LTC2050HS5#PBF	LTC2050HS5#TRPBF	LTAEG	5-Lead Plastic TSOT-23	$-40^{\circ}\text{C}$ to $125^{\circ}\text{C}$
LTC2050HVC5#PBF	LTC2050HVC5#TRPBF	LTAEH	5-Lead Plastic TSOT-23	$0^{\circ}\text{C}$ to $70^{\circ}\text{C}$
LTC2050HVIS5#PBF	LTC2050HVIS5#TRPBF	LTAEH	5-Lead Plastic TSOT-23	$-40^{\circ}\text{C}$ to $85^{\circ}\text{C}$
LTC2050HVHS5#PBF	LTC2050HVHS5#TRPBF	LTAEH	5-Lead Plastic TSOT-23	$-40^{\circ}\text{C}$ to $125^{\circ}\text{C}$
LTC2050CS6#PBF	LTC2050CS6#TRPBF	LTA EJ	6-Lead Plastic TSOT-23	$0^{\circ}\text{C}$ to $70^{\circ}\text{C}$
LTC2050IS6#PBF	LTC2050IS6#TRPBF	LTA EJ	6-Lead Plastic TSOT-23	$-40^{\circ}\text{C}$ to $85^{\circ}\text{C}$
LTC2050HS6#PBF	LTC2050HS6#TRPBF	LTA EJ	6-Lead Plastic TSOT-23	$-40^{\circ}\text{C}$ to $125^{\circ}\text{C}$
LTC2050HVMP6#PBF	LTC2050HVMP6#TRPBF	LTHGP	6-Lead Plastic TSOT-23	$-55^{\circ}\text{C}$ to $150^{\circ}\text{C}$
LTC2050HVC6#PBF	LTC2050HVC6#TRPBF	LTA EK	6-Lead Plastic TSOT-23	$0^{\circ}\text{C}$ to $70^{\circ}\text{C}$
LTC2050HVIS6#PBF	LTC2050HVIS6#TRPBF	LTA EK	6-Lead Plastic TSOT-23	$-40^{\circ}\text{C}$ to $85^{\circ}\text{C}$
LTC2050HVHS6#PBF	LTC2050HVHS6#TRPBF	LTA EK	6-Lead Plastic TSOT-23	$-40^{\circ}\text{C}$ to $125^{\circ}\text{C}$
LTC2050CS8#PBF	LTC2050CS8#TRPBF	2050	8-Lead Plastic SO	$0^{\circ}\text{C}$ to $70^{\circ}\text{C}$
LTC2050IS8#PBF	LTC2050IS8#TRPBF	2050I	8-Lead Plastic SO	$-40^{\circ}\text{C}$ to $85^{\circ}\text{C}$
LTC2050HVC8#PBF	LTC2050HVC8#TRPBF	2050HV	8-Lead Plastic SO	$0^{\circ}\text{C}$ to $70^{\circ}\text{C}$

Rev. E

## ORDER INFORMATION

LEAD FREE FINISH	TAPE AND REEL	PART MARKING*	PACKAGE DESCRIPTION	SPECIFIED TEMPERATURE RANGE
LTC2050HVIS8#PBF	LTC2050HVIS8#TRPBF	050HVI	8-Lead Plastic SO	–40°C to 85°C
LTC2050CS5	LTC2050CS5#TR	LTAEG	5-Lead Plastic TSOT-23	0°C to 70°C
LTC2050IS5	LTC2050IS5#TR	LTAEG	5-Lead Plastic TSOT-23	–40°C to 85°C
LTC2050HS5	LTC2050HS5#TR	LTAEG	5-Lead Plastic TSOT-23	–40°C to 125°C
LTC2050HVCS5	LTC2050HVCS5#TR	LTAEH	5-Lead Plastic TSOT-23	0°C to 70°C
LTC2050HVIS5	LTC2050HVIS5#TR	LTAEH	5-Lead Plastic TSOT-23	–40°C to 85°C
LTC2050HVHS5	LTC2050HVHS5#TR	LTAEH	5-Lead Plastic TSOT-23	–40°C to 125°C
LTC2050CS6	LTC2050CS6#TR	LTA EJ	6-Lead Plastic TSOT-23	0°C to 70°C
LTC2050IS6	LTC2050IS6#TR	LTA EJ	6-Lead Plastic TSOT-23	–40°C to 85°C
LTC2050HS6	LTC2050HS6#TR	LTA EJ	6-Lead Plastic TSOT-23	–40°C to 125°C
LTC2050HVCS6	LTC2050HVCS6#TR	LTA EK	6-Lead Plastic TSOT-23	0°C to 70°C
LTC2050HVIS6	LTC2050HVIS6#TR	LTA EK	6-Lead Plastic TSOT-23	–40°C to 85°C
LTC2050HVHS6	LTC2050HVHS6#TR	LTA EK	6-Lead Plastic TSOT-23	–40°C to 125°C
LTC2050CS8	LTC2050CS8#TR	2050	8-Lead Plastic SO	0°C to 70°C
LTC2050IS8	LTC2050IS8#TR	2050I	8-Lead Plastic SO	–40°C to 85°C
LTC2050HVCS8	LTC2050HVCS8#TR	2050HV	8-Lead Plastic SO	0°C to 70°C
LTC2050HVIS8	LTC2050HVIS8#TR	050HVI	8-Lead Plastic SO	–40°C to 85°C

Contact the factory for parts specified with wider operating temperature ranges. \*The temperature grade is identified by a label on the shipping container.

[Tape and reel specifications](#). Some packages are available in 500 unit reels through designated sales channels with #TRMPBF suffix.

# LTC2050/LTC2050HV

## ELECTRICAL CHARACTERISTICS (LTC2050/LTC2050HV) The ● denotes the specifications which apply over the full operating temperature range, otherwise specifications are at $T_A = 25^\circ\text{C}$ . $V_S = 3\text{V}$ unless otherwise noted. (Note 3)

PARAMETER	CONDITIONS		C, I SUFFIXES			H SUFFIX			UNITS
			MIN	TYP	MAX	MIN	TYP	MAX	
Input Offset Voltage	(Note 2)			$\pm 0.5$	$\pm 3$		$\pm 0.5$	$\pm 3$	$\mu\text{V}$
Average Input Offset Drift	(Note 2)	●			$\pm 0.03$			$\pm 0.05$	$\mu\text{V}/^\circ\text{C}$
Long-Term Offset Drift				50			50		$\text{nV}/\sqrt{\text{mo}}$
Input Bias Current	LTC2050	●		$\pm 20$	$\pm 75$ $\pm 300$		$\pm 20$	$\pm 75$ $\pm 4000$	$\text{pA}$ $\text{pA}$
	LTC2050HV	●		$\pm 1$	$\pm 50$ $\pm 100$		$\pm 1$	$\pm 50$ $\pm 4000$	$\text{pA}$ $\text{pA}$
Input Offset Current	LTC2050	●			$\pm 150$ $\pm 200$			$\pm 150$ $\pm 1000$	$\text{pA}$ $\text{pA}$
	LTC2050HV	●			$\pm 100$ $\pm 150$			$\pm 100$ $\pm 1000$	$\text{pA}$ $\text{pA}$
Input Noise Voltage	$R_S = 100\Omega$ , 0.01Hz to 10Hz			1.5			1.5		$\mu\text{V}_{\text{P-P}}$
Input Capacitance				1.7			1.7		$\text{pF}$
Common Mode Rejection Ratio	LTC2050/LTC2050HV $V_{\text{CM}} = \text{GND to } (V^+ - 1.3)$ $V_{\text{CM}} = \text{GND to } (V^+ - 1.3)$	●	115	130		115	130		$\text{dB}$
			110	130		110	130		$\text{dB}$
Power Supply Rejection Ratio	$V_S = 2.7\text{V to } 6\text{V}$	●	120	130		120	130		$\text{dB}$
			115	130		115	130		$\text{dB}$
Large-Signal Voltage Gain	$R_L = 10\text{k}$	●	120	140		120	140		$\text{dB}$
			115	140		115	140		$\text{dB}$
Output Voltage Swing High	$R_L = 2\text{k to GND}$	●	2.85	2.94		2.85	2.94		$\text{V}$
	$R_L = 10\text{k to GND}$	●	2.95	2.98		2.95	2.98		$\text{V}$
Output Voltage Swing Low	$R_L = 2\text{k to GND}$	●		1	10		1	10	$\text{mV}$
	$R_L = 10\text{k to GND}$	●		1	10		1	10	$\text{mV}$
Slew Rate				2			2		$\text{V}/\mu\text{s}$
Gain Bandwidth Product				3			3		$\text{MHz}$
Supply Current	$V_{\text{SHDN}} = V_{\text{IH}}$ , No Load	●		0.75	1.1		0.75	1.2	$\text{mA}$
	$V_{\text{SHDN}} = V_{\text{IL}}$	●			10			10	$\mu\text{A}$
Shutdown Pin Input Low Voltage ( $V_{\text{IL}}$ )		●			$V^- + 0.5$			$V^- + 0.5$	$\text{V}$
Shutdown Pin Input High Voltage ( $V_{\text{IH}}$ )		●	$V^+ - 0.5$			$V^+ - 0.5$			$\text{V}$
Shutdown Pin Input Current	$V_{\text{SHDN}} = \text{GND}$	●		-0.5	-3		-0.5	-3	$\mu\text{A}$
Internal Sampling Frequency				7.5			7.5		$\text{kHz}$

# ELECTRICAL CHARACTERISTICS

The ● denotes the specifications which apply over the full operating temperature range, otherwise specifications are at  $T_A = 25^\circ\text{C}$ . (LTC2050/LTC2050HV)  $V_S = 5\text{V}$  unless otherwise noted. (Note 3)

PARAMETER	CONDITIONS		C, I SUFFIXES			H, MP SUFFIX			UNITS
			MIN	TYP	MAX	MIN	TYP	MAX	
Input Offset Voltage	(Note 2)			$\pm 0.5$	$\pm 3$		$\pm 0.5$	$\pm 3$	$\mu\text{V}$
Average Input Offset Drift	(Note 2) LTC2050HVMP	● ●			$\pm 0.03$			$\pm 0.05$ $\pm 0.10$	$\mu\text{V}/^\circ\text{C}$ $\mu\text{V}/^\circ\text{C}$
Long-Term Offset Drift				50			50		$\text{nV}/\sqrt{\text{mo}}$
Input Bias Current	LTC2050	●		$\pm 75$	$\pm 150$ $\pm 300$		$\pm 75$	$\pm 150$ $\pm 4000$	$\text{pA}$ $\text{pA}$
	LTC2050HV	●		$\pm 7$	$\pm 50$ $\pm 150$		$\pm 7$	$\pm 50$ $\pm 4000$	$\text{pA}$ $\text{pA}$
	LTC2050HVMP	●					$\pm 7$	$\pm 50$ $\pm 8000$	$\text{pA}$ $\text{pA}$
Input Offset Current	LTC2050	●			$\pm 300$ $\pm 400$			$\pm 300$ $\pm 1000$	$\text{pA}$ $\text{pA}$
	LTC2050HV	●			$\pm 100$ $\pm 200$			$\pm 100$ $\pm 1000$	$\text{pA}$ $\text{pA}$
	LTC2050HVMP	●						$\pm 2000$	$\text{pA}$
Input Noise Voltage	$R_S = 100\Omega$ , 0.01Hz to 10Hz			1.5			1.5		$\mu\text{V}_{\text{P-P}}$
Common Mode Rejection Ratio	LTC2050/LTC2050HV $V_{\text{CM}} = \text{GND to } (V^+ - 1.3)$ $V_{\text{CM}} = \text{GND to } (V^+ - 1.3)$	● ●	120 115	130 130		120 110	130 130		$\text{dB}$ $\text{dB}$
	LTC2050HVMP $V_{\text{CM}} = \text{GND to } (V^+ - 1.3)$	●				107	130		$\text{dB}$
Power Supply Rejection Ratio	$V_S = 2.7\text{V to } 6\text{V}$	●	120 115	130 130		120 115	130 130		$\text{dB}$ $\text{dB}$
	LTC2050HVMP $V_S = 4.5\text{V to } 11\text{V}$	●				117 112	130 130		$\text{dB}$ $\text{dB}$
Large-Signal Voltage Gain	$R_L = 10\text{k}$	●	125 120	140 140		125 115	140 140		$\text{dB}$ $\text{dB}$
Output Voltage Swing High	$R_L = 2\text{k to GND}$	●	4.85	4.94		4.85	4.94		$\text{V}$
	$R_L = 10\text{k to GND}$	●	4.95	4.98		4.95	4.98		$\text{V}$
Output Voltage Swing Low	$R_L = 2\text{k to GND}$	●		1	10		1	10	$\text{mV}$
	$R_L = 10\text{k to GND}$	●		1	10		1	10	$\text{mV}$
Slew Rate				2			2		$\text{V}/\mu\text{s}$
Gain Bandwidth Product				3			3		$\text{MHz}$
Supply Current	$V_{\text{SHDN}} = V_{\text{IH}}$ , No Load	●		0.8	1.2		0.8	1.3	$\text{mA}$
	$V_{\text{SHDN}} = V_{\text{IL}}$	●			15			15	$\mu\text{A}$
Shutdown Pin Input Low Voltage ( $V_{\text{IL}}$ )		●			$V^- + 0.5$			$V^- + 0.5$	$\text{V}$
Shutdown Pin Input High Voltage ( $V_{\text{IH}}$ )		●	$V^+ - 0.5$			$V^+ - 0.5$			$\text{V}$
Shutdown Pin Input Current	$V_{\text{SHDN}} = \text{GND}$	●		-0.5	-7		-0.5	-7	$\mu\text{A}$
Internal Sampling Frequency				7.5			7.5		$\text{kHz}$

# LTC2050/LTC2050HV

## ELECTRICAL CHARACTERISTICS (LTC2050HV) The ● denotes the specifications which apply over the full operating temperature range, otherwise specifications are at $T_A = 25^\circ\text{C}$ . $V_S = \pm 5\text{V}$ unless otherwise noted. (Note 3)

PARAMETER	CONDITIONS		C, I SUFFIXES			H, MP SUFFIX			UNITS
			MIN	TYP	MAX	MIN	TYP	MAX	
Input Offset Voltage	(Note 2)			$\pm 0.5$	$\pm 3$		$\pm 0.5$	$\pm 3$	$\mu\text{V}$
Average Input Offset Drift	(Note 2) LTC2050HVMP	● ●			$\pm 0.03$			$\pm 0.05$ $\pm 0.10$	$\mu\text{V}/^\circ\text{C}$ $\mu\text{V}/^\circ\text{C}$
Long-Term Offset Drift				50			50		$\text{nV}/\sqrt{\text{mo}}$
Input Bias Current (Note 4)	LTC2050HV	●		$\pm 25$	$\pm 125$ $\pm 300$		$\pm 25$	$\pm 125$ $\pm 4000$	$\text{pA}$ $\text{pA}$
	LTC2050HVMP	●					$\pm 25$	$\pm 125$ $\pm 8000$	$\text{pA}$ $\text{pA}$
Input Offset Current (Note 4)	LTC2050HV	●			$\pm 250$ $\pm 500$			$\pm 250$ $\pm 1000$	$\text{pA}$ $\text{pA}$
	LTC2050HVMP	●						$\pm 2000$	$\text{pA}$
Input Noise Voltage	$R_S = 100\Omega$ , 0.01Hz to 10Hz			1.5			1.5		$\mu\text{V}_{\text{p-p}}$
Common Mode Rejection Ratio	LTC2050HV $V_{\text{CM}} = V^-$ to $(V^+ - 1.3)$ $V_{\text{CM}} = V^-$ to $(V^+ - 1.3)$	●	120 115	130 130		120 115	130 130		$\text{dB}$ $\text{dB}$
	LTC2050HVMP $V_{\text{CM}} = V^-$ to $(V^+ - 1.3)$	●				112	130		$\text{dB}$
Power Supply Rejection Ratio	$V_S = 2.7\text{V}$ to $11\text{V}$	●	120 115	130 130		120 115	130 130		$\text{dB}$ $\text{dB}$
	LTC2050HVMP $V_S = 4.5$ to $11\text{V}$	●				117 112	130 130		$\text{dB}$ $\text{dB}$
Large-Signal Voltage Gain	$R_L = 10\text{k}$	●	125 120	140 140		125 120	140 140		$\text{dB}$ $\text{dB}$
Maximum Output Voltage Swing	$R_L = 2\text{k}$ to GND	●	$\pm 4.75$	$\pm 4.94$		$\pm 4.50$	$\pm 4.94$		$\text{V}$
	$R_L = 10\text{k}$ to GND	●	$\pm 4.90$	$\pm 4.98$		$\pm 4.85$	$\pm 4.98$		$\text{V}$
Slew Rate				2			2		$\text{V}/\mu\text{s}$
Gain Bandwidth Product				3			3		$\text{MHz}$
Supply Current	$V_{\text{SHDN}} = V_{\text{IH}}$ , No Load	●		1	1.5		1	1.6	$\text{mA}$
	$V_{\text{SHDN}} = V_{\text{IL}}$	●			25			25	$\mu\text{A}$
Shutdown Pin Input Low Voltage ( $V_{\text{IL}}$ )		●			$V^- + 0.5$			$V^- + 0.5$	$\text{V}$
Shutdown Pin Input High Voltage ( $V_{\text{IH}}$ )		●	$V^+ - 0.5$			$V^+ - 0.5$			$\text{V}$
Shutdown Pin Input Current	$V_{\text{SHDN}} = V^-$	●		-3	-20		-3	-20	$\mu\text{A}$
Internal Sampling Frequency				7.5			7.5		$\text{kHz}$

**Note 1:** Stresses beyond those listed under Absolute Maximum Ratings may cause permanent damage to the device. Exposure to any Absolute Maximum Rating condition for extended periods may affect device reliability and lifetime.

**Note 2:** These parameters are guaranteed by design. Thermocouple effects preclude measurements of these voltage levels during automated testing.

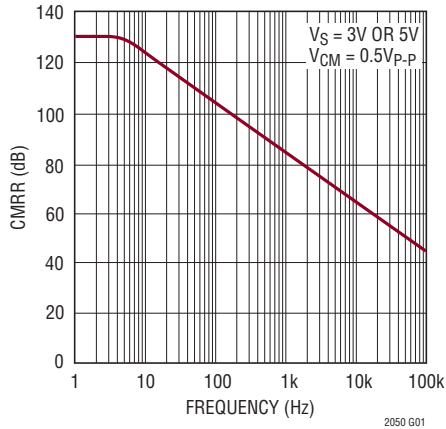
**Note 3:** All versions of the LTC2050 are designed, characterized and expected to meet the extended temperature limits of  $-40^\circ\text{C}$  and  $125^\circ\text{C}$ .

The LTC2050C/LTC2050HVC are guaranteed to meet the temperature limits of  $0^\circ\text{C}$  and  $70^\circ\text{C}$ . The LTC2050I/LTC2050HVI are guaranteed to meet the temperature limits of  $-40^\circ\text{C}$  and  $85^\circ\text{C}$ . The LTC2050H/LTC2050HVH are guaranteed to meet the temperature limits of  $-40^\circ\text{C}$  and  $125^\circ\text{C}$ . The are guaranteed to meet the temperature limits of  $-55^\circ\text{C}$  and  $150^\circ\text{C}$ .

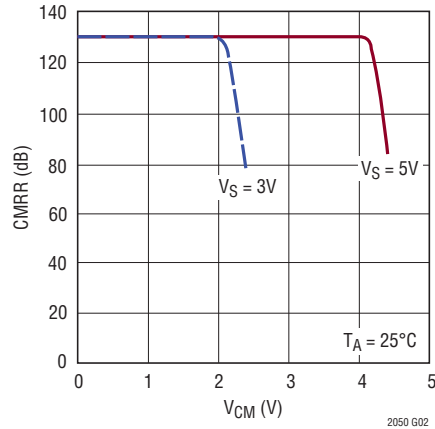
**Note 4:** The bias current measurement accuracy depends on the proximity of the supply bypass capacitor to the device under test, especially at  $\pm 5\text{V}$  supplies. Because of testing limitations on the placement of this bypass capacitor, the bias current at  $\pm 5\text{V}$  supplies is guaranteed by design to meet the data sheet limits, but tested to relaxed limits.

## TYPICAL PERFORMANCE CHARACTERISTICS

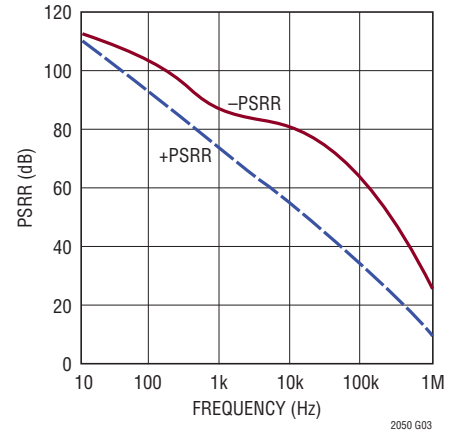
Common Mode Rejection Ratio vs Frequency



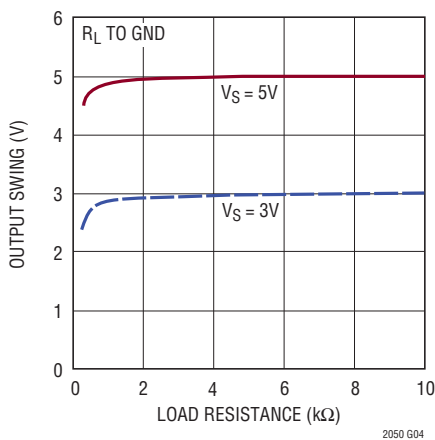
DC CMRR vs Common Mode Input Voltage



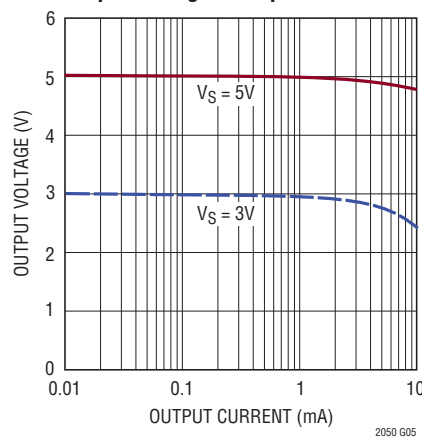
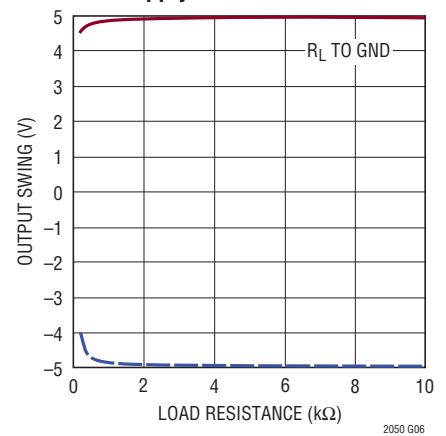
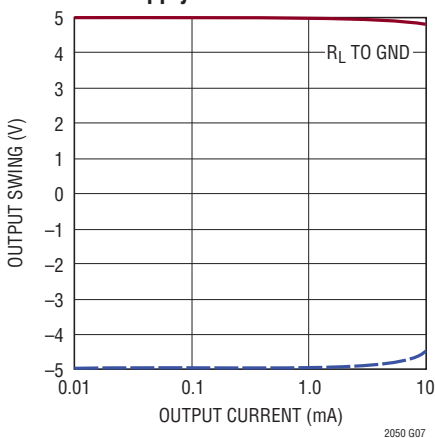
PSRR vs Frequency



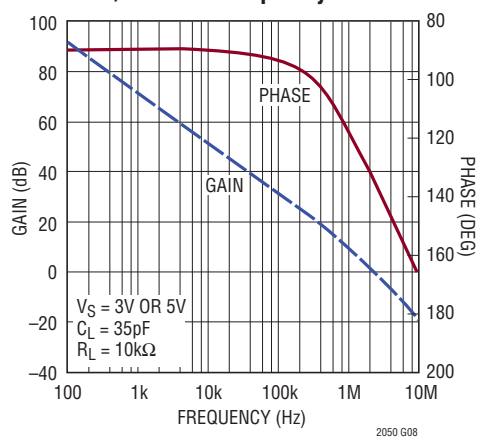
Output Voltage Swing vs Load Resistance



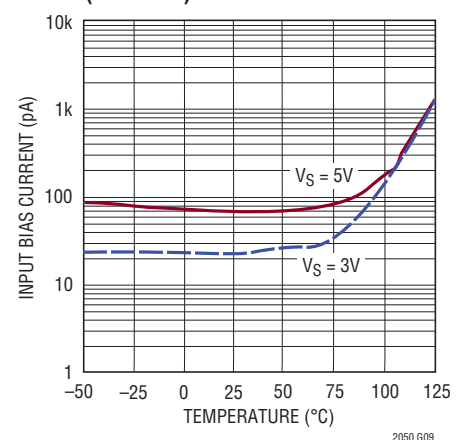
Output Swing vs Output Current

Output Swing vs Load Resistance  $\pm 5V$  SupplyOutput Swing vs Output Current  $\pm 5V$  Supply

Gain/Phase vs Frequency

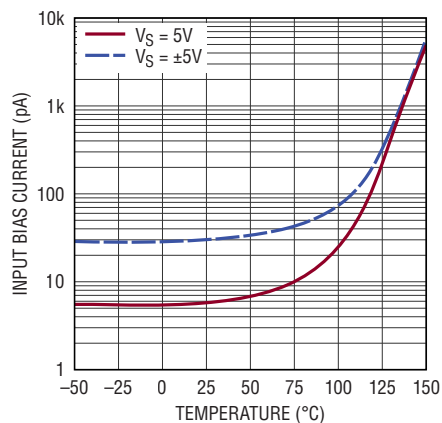


Input Bias Current vs Temperature (LTC2050)

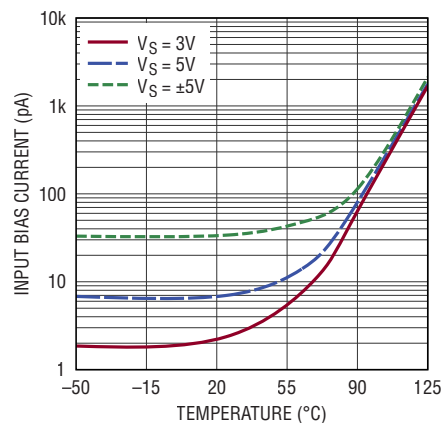


## TYPICAL PERFORMANCE CHARACTERISTICS

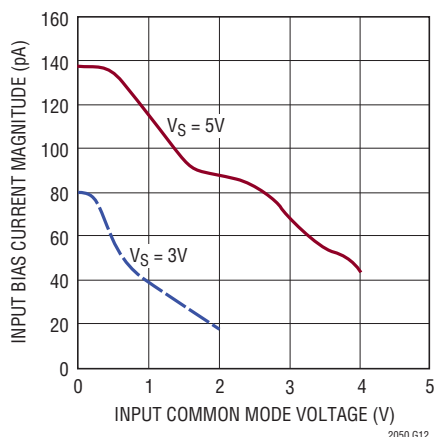
**Input Bias Current vs Temperature  
(LTC2050HVMP)**



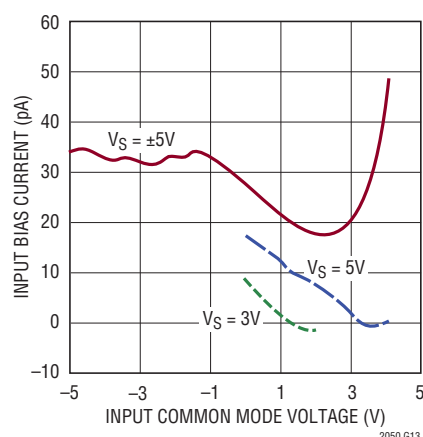
**Input Bias Current vs Temperature  
(LTC2050HV)**



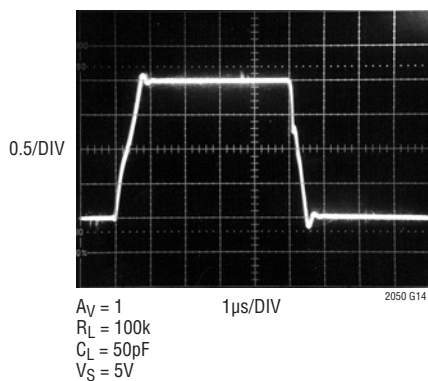
**Input Bias Current vs Input  
Common Mode Voltage**



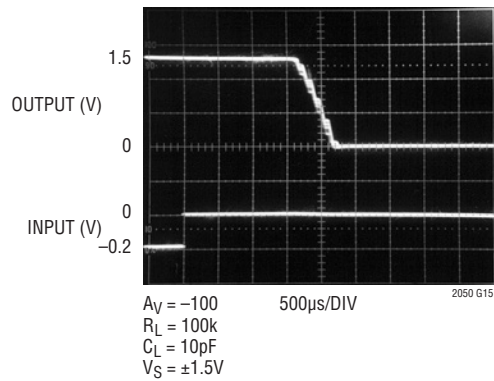
**Input Bias Current vs Input  
Common Mode Voltage  
(LTC2050HV)**



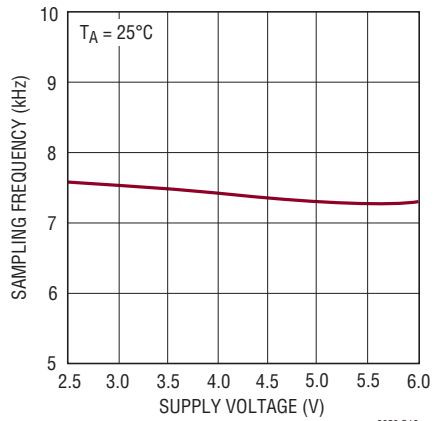
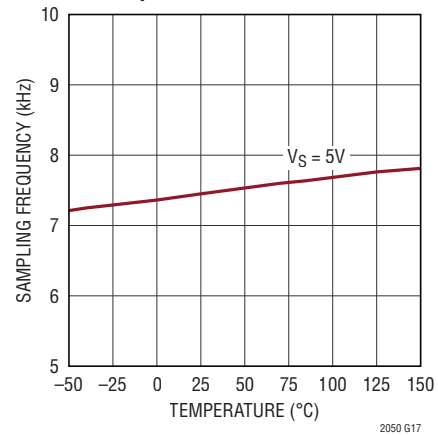
**Transient Response**



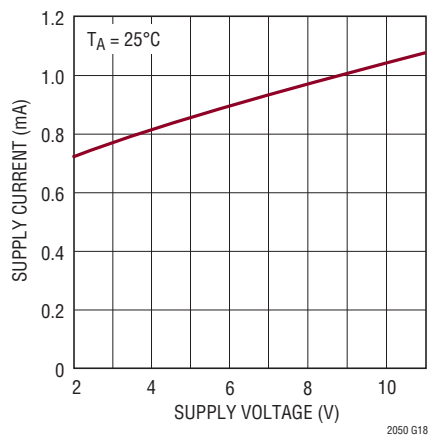
**Input Overload Recovery**



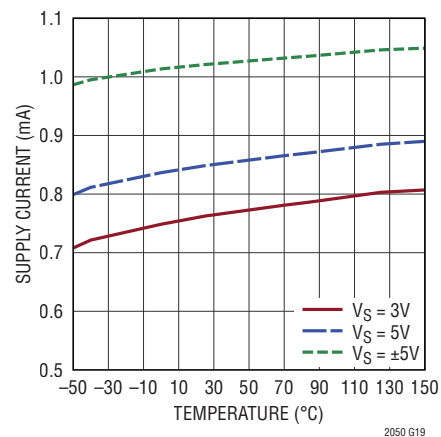
## TYPICAL PERFORMANCE CHARACTERISTICS

Sampling Frequency  
vs Supply VoltageSampling Frequency  
vs Temperature

Supply Current vs Supply Voltage



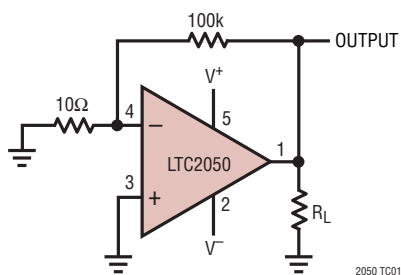
Supply Current vs Temperature



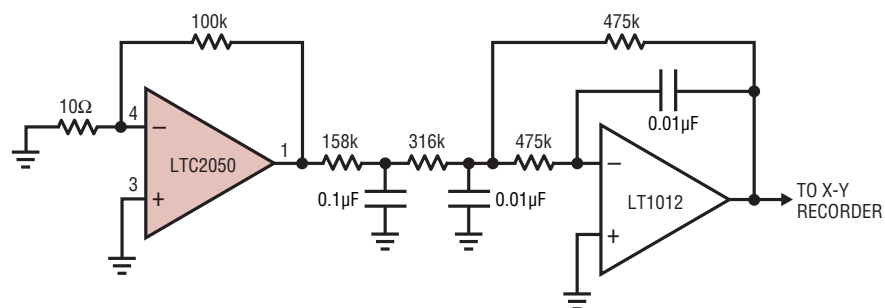


## TEST CIRCUITS

Electrical Characteristics Test Circuit



DC-10Hz Noise Test Circuit



## APPLICATIONS INFORMATION

### Shutdown

The LTC2050 includes a shutdown pin in the 6-lead SOT-23 and the SO-8 version. When this active low pin is high or allowed to float, the device operates normally. When the shutdown pin is pulled low, the device enters shutdown mode; supply current drops to 3 $\mu$ A, all clocking stops, and both inputs and output assume a high impedance state.

### Clock Feedthrough, Input Bias Current

The LTC2050 uses auto-zeroing circuitry to achieve an almost zero DC offset over temperature, common mode voltage, and power supply voltage. The frequency of the clock used for auto-zeroing is typically 7.5kHz. The term clock feedthrough is broadly used to indicate visibility of this clock frequency in the op amp output spectrum. There are typically two types of clock feedthrough in auto zeroed op amps like the LTC2050.

The first form of clock feedthrough is caused by the settling of the internal sampling capacitor and is input referred; that is, it is multiplied by the closed loop gain of the op amp. This form of clock feedthrough is independent of the magnitude of the input source resistance or the magnitude of the gain setting resistors. The LTC2050 has a residue clock feedthrough of less than 1 $\mu$ V<sub>RMS</sub> input referred at 7.5kHz.

The second form of clock feedthrough is caused by the small amount of charge injection occurring during the sampling and holding of the op amp's input offset voltage. The current spikes are multiplied by the impedance seen at the input terminals of the op amp, appearing at the

output multiplied by the closed loop gain of the op amp. To reduce this form of clock feedthrough, use smaller valued gain setting resistors and minimize the source resistance at the input. If the resistance seen at the inputs is less than 10k, this form of clock feedthrough is less than 1 $\mu$ V<sub>RMS</sub> input referred at 7.5kHz, or less than the amount of residue clock feedthrough from the first form described above.

Placing a capacitor across the feedback resistor reduces either form of clock feedthrough by limiting the bandwidth of the closed loop gain.

Input bias current is defined as the DC current into the input pins of the op amp. The same current spikes that cause the second form of clock feedthrough described above, when averaged, dominate the DC input bias current of the op amp below 70°C.

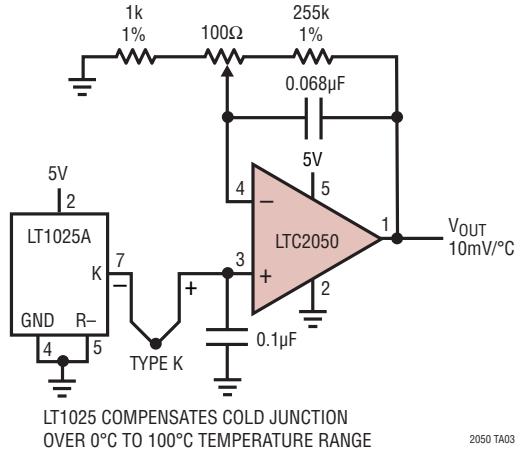
At temperatures above 70°C, the leakage of the ESD protection diodes on the inputs increases the input bias currents of both inputs in the positive direction, while the current caused by the charge injection stays relatively constant. At elevated temperatures (above 85°C) the leakage current begins to dominate and both the negative and positive pin's input bias currents are in the positive direction (into the pins).

### Input Pins, ESD Sensitivity

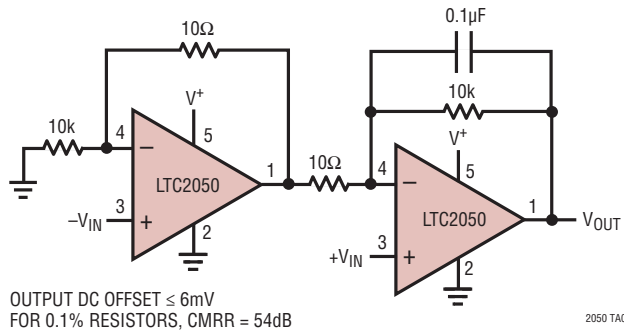
ESD voltages above 700V on the input pins of the op amp will cause the input bias currents to increase (more DC current into the pins). At these voltages, it is possible to damage the device to a point where the input bias current exceeds the maximums specified in this data sheet.

## TYPICAL APPLICATIONS

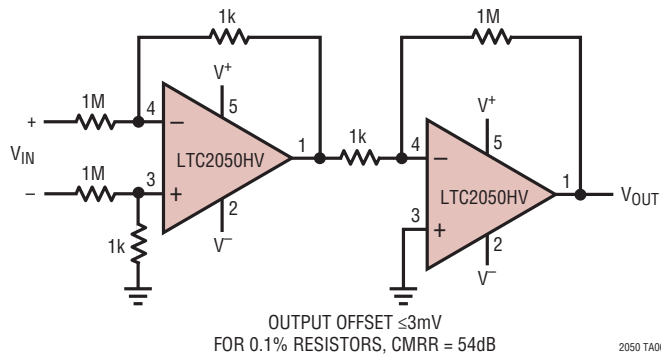
### Single Supply Thermocouple Amplifier



### Gain of 1001 Single Supply Instrumentation Amplifier

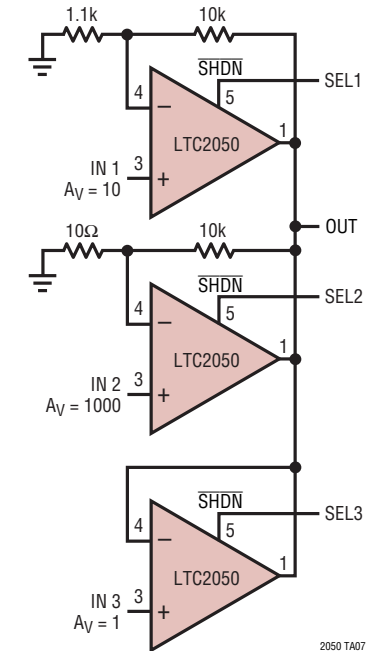


### Instrumentation Amplifier with 100V Common Mode Input Voltage



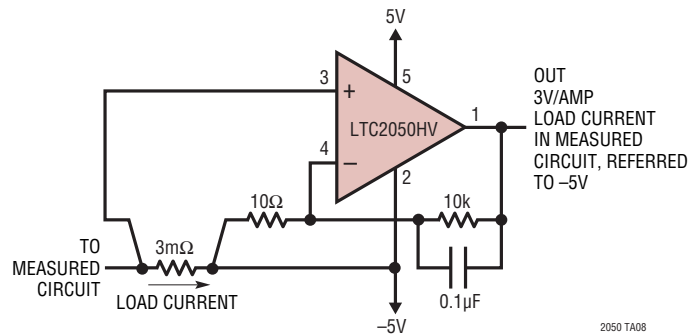
## TYPICAL APPLICATIONS

## High Precision 3-Input Mux



SELECT INPUTS ARE CMOS LOGIC COMPATIBLE

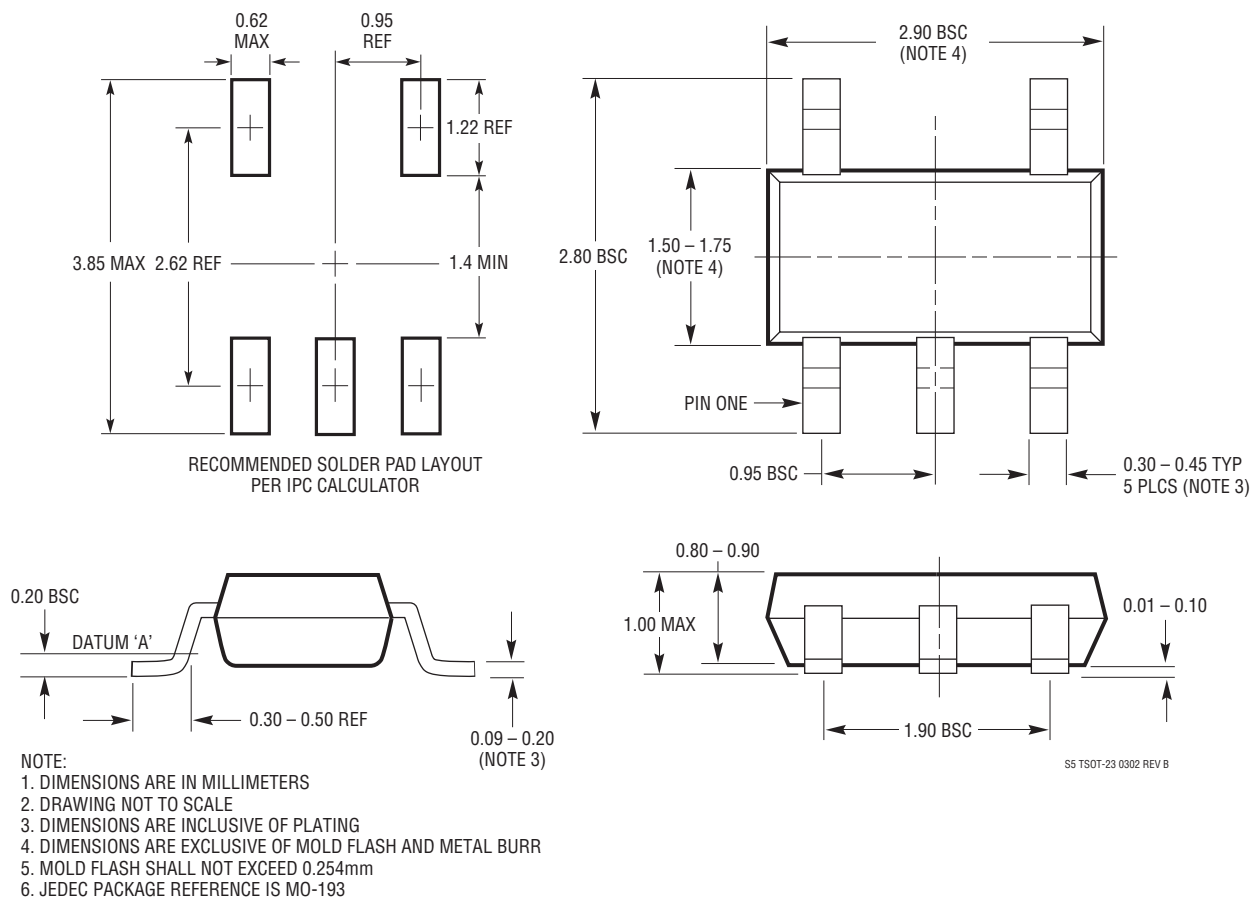
## Low Side Power Supply Current Sensing



2050 TA08

## PACKAGE DESCRIPTION

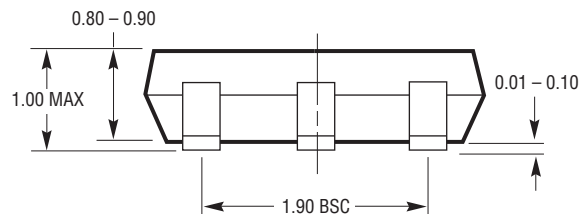
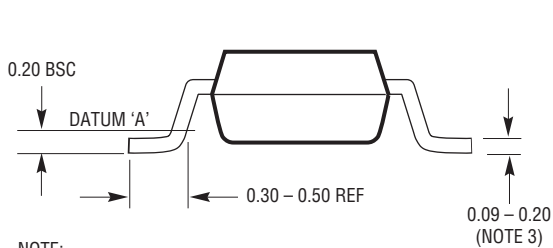
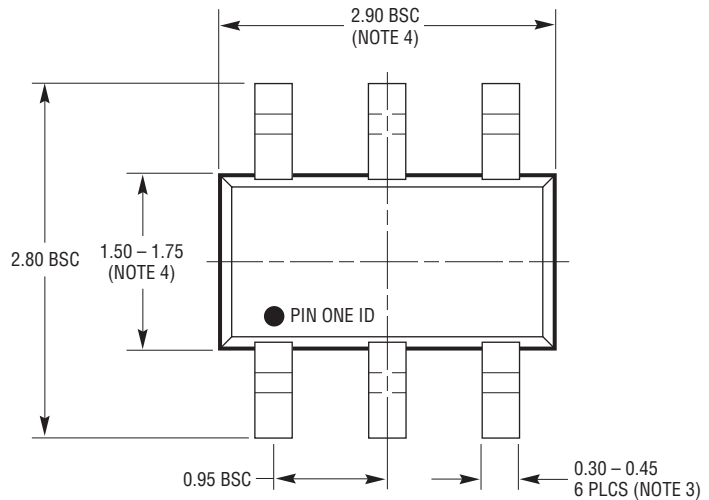
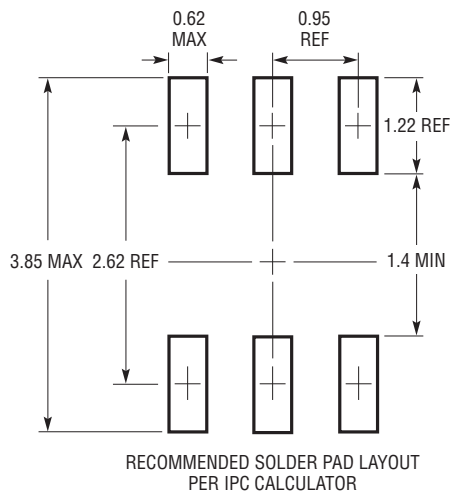
**S5 Package**  
**5-Lead Plastic TSOT-23**  
 (Reference LTC DWG # 05-08-1635 Rev B)



S5 TSOT-23 0302 REV B

# PACKAGE DESCRIPTION

## S6 Package 6-Lead Plastic TSOT-23 (Reference LTC DWG # 05-08-1636)

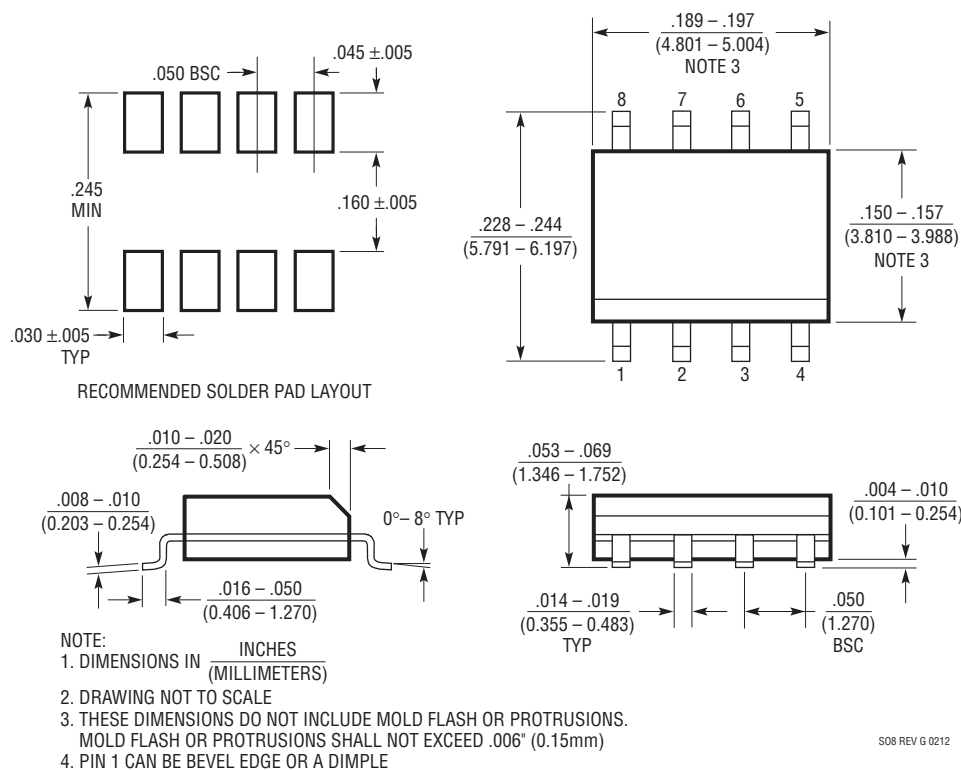


- NOTE:
1. DIMENSIONS ARE IN MILLIMETERS
  2. DRAWING NOT TO SCALE
  3. DIMENSIONS ARE INCLUSIVE OF PLATING
  4. DIMENSIONS ARE EXCLUSIVE OF MOLD FLASH AND METAL BURR
  5. MOLD FLASH SHALL NOT EXCEED 0.254mm
  6. JEDEC PACKAGE REFERENCE IS MO-193

S6 TSOT-23 0302

## PACKAGE DESCRIPTION

### S8 Package 8-Lead Plastic Small Outline (Narrow .150 Inch) (Reference LTC DWG # 05-08-1610 Rev G)



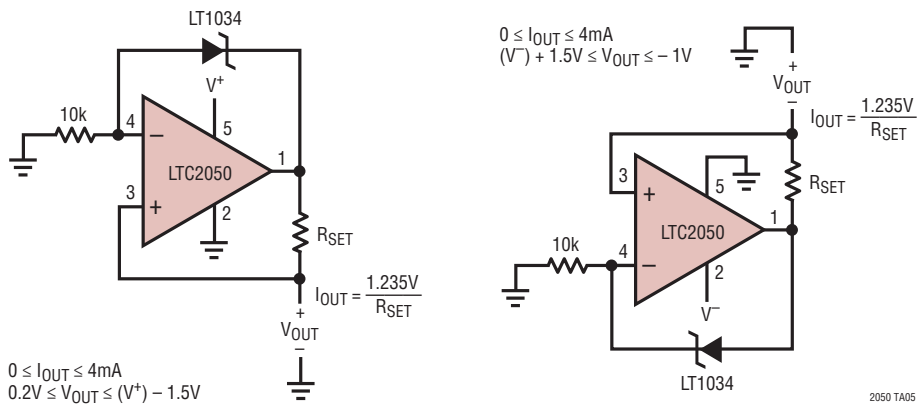
**REVISION HISTORY** (Revision history begins at Rev D)

REV	DATE	DESCRIPTION	PAGE NUMBER
D	08/17	Updated T <sub>JMAX</sub>	2
E	11/18	Added MP option (higher temperature version)	1, 2, 4-6, 7-8



TYPICAL APPLICATION

Ground Referred Precision Current Sources



RELATED PARTS

PART NUMBER	DESCRIPTION	COMMENTS
<a href="#">LTC1049</a>	Low Power Zero-Drift Op Amp	Low Supply Current 200µA
<a href="#">LTC1050</a>	Precision Zero-Drift Op Amp	Single Supply Operation 4.75V to 16V, Noise Tested and Guaranteed
<a href="#">LTC1051/LTC1053</a>	Precision Zero-Drift Op Amp	Dual/Quad
<a href="#">LTC1150</a>	±15V Zero-Drift Op Amp	High Voltage Operation ±18V
<a href="#">LTC1152</a>	Rail-to-Rail Input and Output Zero-Drift Op Amp	Single Zero-Drift Op Amp with Rail-to-Rail Input and Output and Shutdown
<a href="#">LT<sup>®</sup>1677</a>	Low Noise Rail-to-Rail Input and Output Precision Op Amp	V <sub>OS</sub> = 90µV, V <sub>S</sub> = 2.7V to 44V
<a href="#">LT1884/LT1885</a>	Rail-to-Rail Output Precision Op Amp	V <sub>OS</sub> = 50µV, I <sub>B</sub> = 400pA, V <sub>S</sub> = 2.7V to 40V
<a href="#">LTC2051</a>	Dual Zero-Drift Op Amp	Dual Version of the LTC2050 in MS8 Package