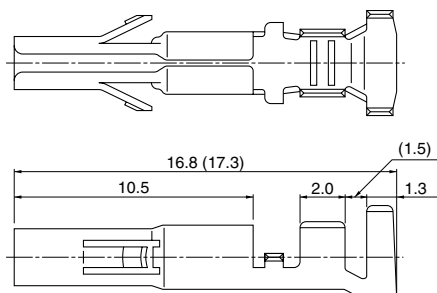


## Contact



Dimensions in [ ] apply to the SLC-22T-2.0 two-wire crimping type.

### One-wire crimping type

Model No.	Applicable wire			Q'ty / reel
	mm <sup>2</sup>	AWG #	Insulation O.D. (mm)	
SLC-21T-2.0	0.33 to 0.75	22 to 18	1.7 to 2.1	4,000

#### Material and Finish

Brass, tin-plated (reflow treatment)

### RoHS compliance

### Two-wire crimping type

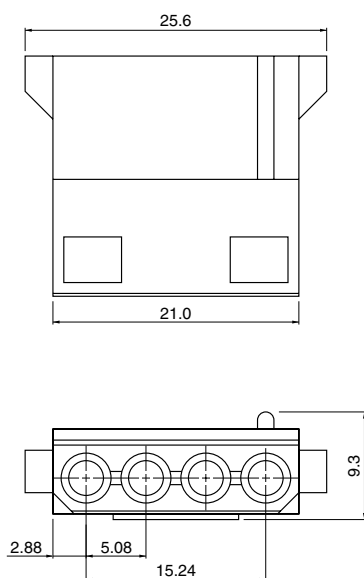
Model No.	Combination of applicable wires UL1007 AWG #	Q'ty / reel
SLC-22T-2.0	20+20, 20+18, 18+18	3,000

#### Material and Finish

Brass, tin-plated (reflow treatment)

### RoHS compliance

## Housing



Model No.	Q'ty / box
LCP-04	500

#### Material

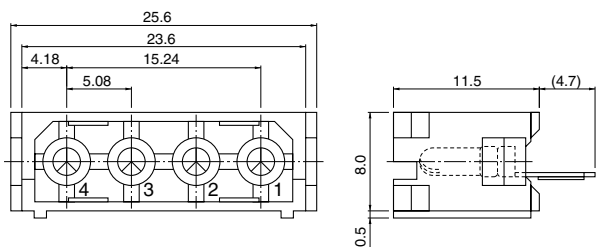
PA 6, UL94V-0, natural (white)

### RoHS compliance

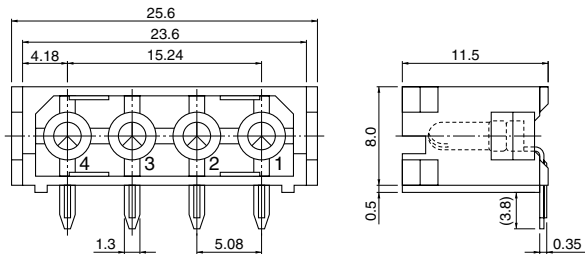
# LC CONNECTOR

## Shrouded header

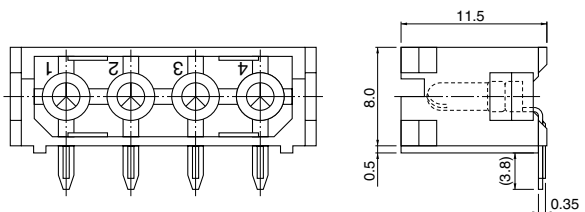
### Top entry type



### Side entry type Shape A



### Shape B



### Top entry type

Model No.	Q'ty / box
LC-04T	100
Material and Finish	
Contact: Brass, tin-plated (reflow treatment) Housing: PA 66, UL94V-0, natural (white)	

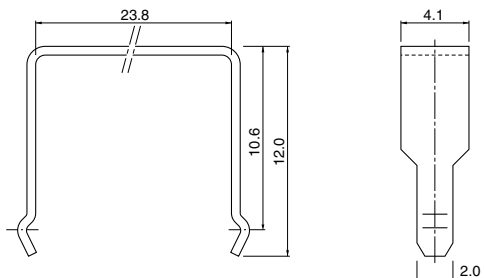
RoHS compliance

### Side entry type

Shape	Model No.	Q'ty / box
A	LC-04A	100
B	LC-04B	
Material and Finish		
Contact: Brass, tin-plated (reflow treatment) Housing: PA 66, UL94V-0, natural (white)		

RoHS compliance

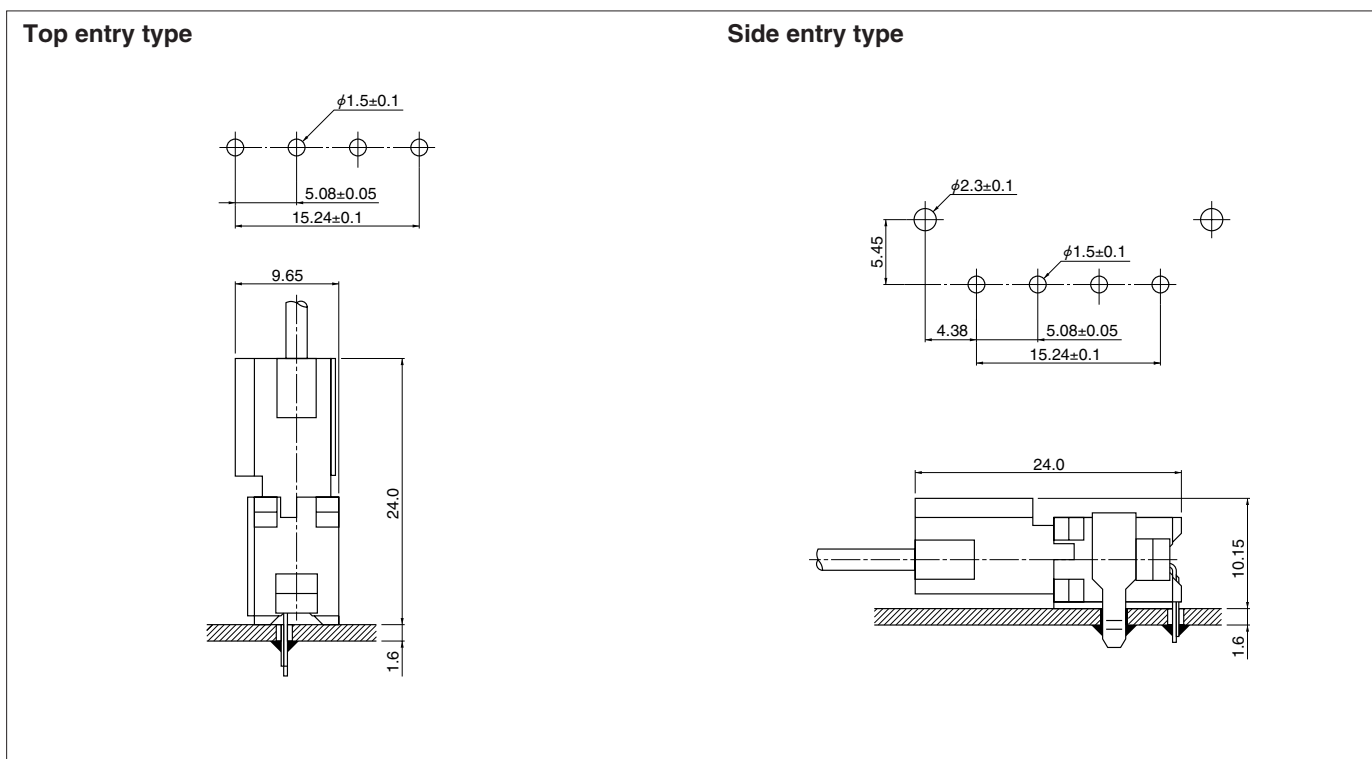
## Housing clamp



Model No.	Q'ty / box
LCC-04	500
Material and Finish	
Brass, tin-plated (reflow treatment)	

RoHS compliance

## PC board layout (viewed from component side) and Assembly layout



Note:

1. Tolerances are non-cumulative:  $\pm 0.05\text{mm}$  for all centers.

2. Hole dimensions differ according to the kind of PC board and piercing method. The dimensions above should serve as a guideline. Contact JST for details.

## Crimping machine, Applicator

Contact	Crimping machine	Crimp applicator	Dies	Crimp applicator with dies
SLC-21T-2.0	AP-K2N	MKS-L	MK/SLC-21-20	APLMK SLC21-20
		—	—	—

Contact	Crimping machine	Crimp applicator	Dies	Crimp applicator with dies
SLC-22T-2.0	AP-K2N	MKS-L	MK/SLC-22-20	APLMK SLC22-20
		—	—	—