

(0.635 mm) .025" PITCH • RUGGED HERMAPHRODITIC CONNECTORS

LSS	1	NO. PINS PER ROW	LEAD STYLE	PLATING OPTION	DV	A	OPTION
-----	---	------------------	------------	----------------	----	---	--------

10, 20, 30, 40, 50

Specify  
LEAD  
STYLE  
from  
chart

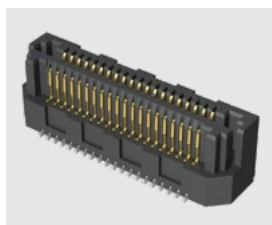
**-F**  
= Gold flash  
on contact,  
Matte Tin on tail

**-L**  
=10 μ" (0.25 μm)  
Gold on contact,  
Matte Tin on tail

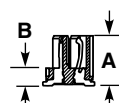
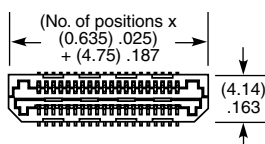
**-K**  
= (3.50 mm) .138" DIA  
Polyimide film  
Pick & Place Pad

**-TR**  
= Tape & Reel

**-FR**  
= Full Reel Tape & Reel  
(must order maximum  
quantity per reel; contact  
Samtec for quantity breaks)



LEAD STYLE	A	B
-01	(4.45) .1752	(1.59) .0628
-02	(7.45) .2933	(4.59) .1808
-03	(5.45) .2146	(2.59) .1021



LEAD STYLE	MATED HEIGHT *
-01 & -01	(6.00) .236
-01 & -03	(7.00) .276
-03 & -03	(8.00) .315
-01 & -02	(9.00) .354
-02 & -03	(10.00) .394
-02 & -02	(12.00) .472

\*Processing conditions will  
affect mated height.

View complete specifications at: [samtec.com?LSS](http://samtec.com?LSS)

(0.80 mm) .0315" PITCH • RUGGED HERMAPHRODITIC CONNECTORS

LSEM	1	NO. PINS PER ROW	LEAD STYLE	PLATING OPTION	TAIL OPTION	A	N	K	"X"R
------	---	------------------	------------	----------------	-------------	---	---	---	------

20, 30, 40, 50

Specify  
LEAD  
STYLE  
from  
chart

**-F**  
= Gold flash  
on contact,  
Matte Tin on tail

**-L**  
=10 μ" (0.25 μm)  
Gold on contact,  
Matte Tin on tail

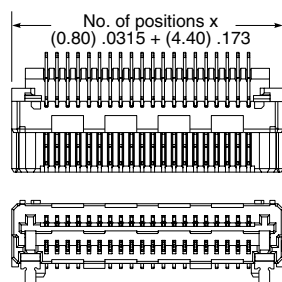
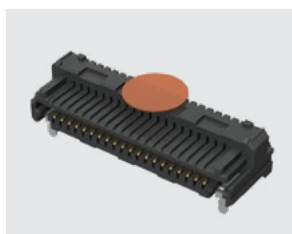
**-DV**  
= Vertical

**-DH**  
= Right-angle  
(Lead style  
-01 only)

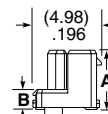
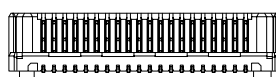
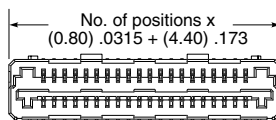
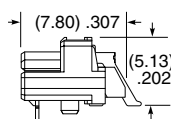
**-K**  
= (3.50 mm)  
.138" DIA  
Polyimide film  
Pick & Place Pad

**-TR**  
= Tape & Reel

**-FR**  
= Full Reel  
Tape & Reel  
(must order  
maximum  
quantity  
per reel;  
contact  
Samtec for  
quantity  
breaks)



LEAD STYLE	A	B
-01 (-DH only)	N/A	NA
-03.0	(4.45) .175	(1.50) .059
-04.0	(5.45) .215	(2.50) .098
-06.0	(7.45) .293	(4.50) .177



LEAD STYLE	MATED HEIGHT *
-03.0 & -03.0	(6.00) .236
-03.0 & -04.0	(7.00) .276
-04.0 & -04.0	(8.00) .315
-03.0 & -06.0	(9.00) .354
-04.0 & -06.0	(10.00) .394
-06.0 & -06.0	(12.00) .472

\*Processing conditions will  
affect mated height.

**Note:**  
Some lengths, styles and  
options are non-standard,  
non-returnable.

**-DH**

**-DV**

View complete specifications at: [samtec.com?LSEM](http://samtec.com?LSEM)