

KUEP Series Panel Plug-in Relay (Continued)

Other Data

Material compliance: EU RoHS/ELV, China RoHS, REACH, Halogen content refer to the Product Compliance Support Center at www.te.com/customersupport/rohssupportcenter

Ambient temperature

DC coil -45°C to 70°C
AC coil 1 pole: -45°C to 55°C
2 pole: -45°C to 45°C

Category of environmental protection

IEC 61810 RT1 - dust protected
Vibration resistance (functional) .065" double amplitude, 10-55Hz
Shock resistance (functional) 15g, 11ms (non-operating)

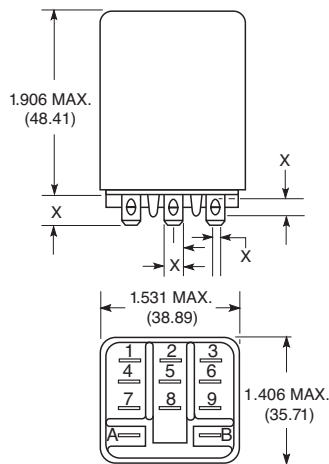
Terminal type Quick connects (QC), .187 or .205 PCB-THT

Terminal retention, push force

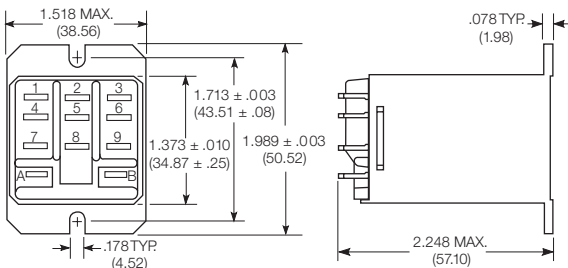
QC .205 17 lbs for 3s
QC .187 25 lbs for 3s

Dimensions

Plain case



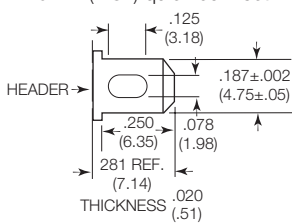
Top flange case



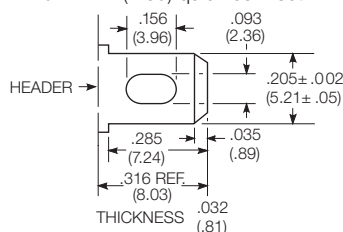
X Is For Terminal Dimensions.
See Terminal Drawings.

Terminal dimensions

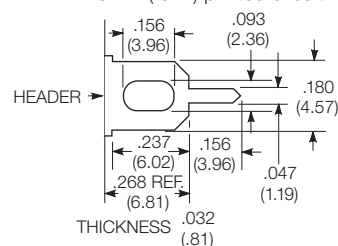
4.75mm (.187) quick connect



5.21mm (.205) quick connect



1.19mm (.047) printed circuit



Other Data (Continued)

Weight 85g
Packaging/unit tray/25 pcs., box/150pcs.

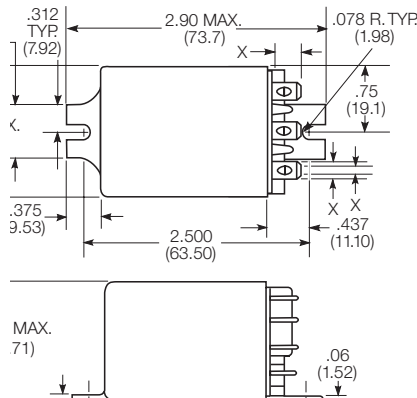
Accessories

For details see datasheet Sockets and Accessories, KUP Relays

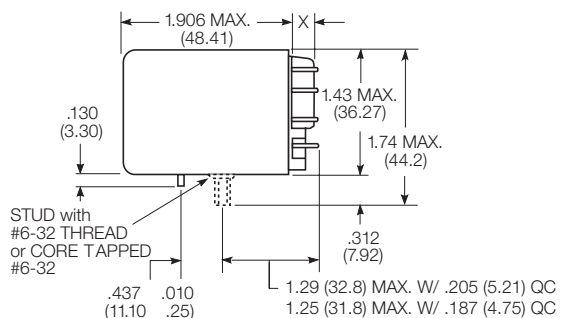
Product Code Description

27E893	DIN socket (use 20C318 clip)
27E121	Track mount socket (use 20C314 clips)
27E043	Chassis mount/solder eyelet socket (use 20C254 clip)
27E046	Chassis mount/PCB socket (use 20C254 clip)
27E067	Chassis mount/quick connect socket (use 20C254 clip)
27E396	Snap-in/quick connect socket (use 20C254 clip)

Bracket mount case



Core / stud mount case

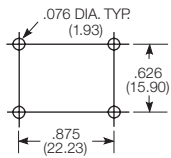


KUEP Series Panel Plug-in Relay (Continued)

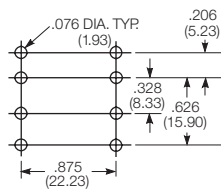
PCB layout

Bottom view on solder pins

1 form X version

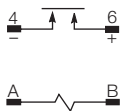


2 form C version shown
(Omit unnecessary holes for form A types)

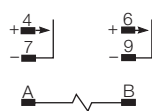


Terminal assignment

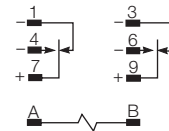
1 Form X



2 Form A



2 Form C



Load polarity noted above is recommended for optimum arc suppression.

Product code structure

Typical product code **KUEP -3 A 1 5 -120**

Type

KUEP Enclosed relay with magnetic blow-outs

Contact arrangement and rating

3 1 form X (1 NO-DM) **7** 2 form A (2 NO)
11 2 form C (2 CO)

Coil Input

A AC, 50/60Hz **D** DC

Mounting and options

1 Socket mount (plain) case **3** Socket mount (plain) case, with indicator lamp ¹⁾
5 Bracket mount case **A** Plain case with #6-32 stud and locating tab
E Plain case with #6-32 tapped core and locating tab **T** Top flange case
¹⁾ Indicator lamps are available on models with the following coils: 6-24VAC and VDC, 110VDC and 120-240VAC.
Only models with 120-240VAC coils are UL recognized.

Terminal and contact material

5 4.75mm (.187in) quick connect/solder; AgCdO **6** 5.21mm (.205in) quick connect/solder; AgCdO
7 1.19mm (.047in) PCB, AgCdO **P** 4.75mm (.187in) quick connect/solder; AgSnOInO
R 5.21mm (.205in) quick connect/solder; AgSnOInO **S** 1.19mm (.047in) PCB, AgSnOInO

Coil voltage

Coil code: please refer to coil versions table

Product Code	Arrangement	Material	Coil	Terminals	Mounting	Part Number
KUEP-3A15-120	1 Form X, 1 NO-DM	AgCdO	120 VAC	4.75mm (.187in) QC	Socket mount, plain case	9-1393113-4
KUEP-3D15-12			12 VDC			9-1393113-8
KUEP-3D15-24			24 VDC			1393114-1
KUEP-3D15-48			48 VDC			1393114-2
KUEP-3D15-110			110 VDC			9-1393113-7
KUEP-3D35-24			24 VDC		Socket mount, plain case w/ indicator lamp	1393114-5
KUEP-7D15-24	2 Form A, 2 NO				Socket mount, plain case	1-1393114-1
KUEP-11A15-120	2 Form C, 2 CO		120 VAC			8-1393113-3
KUEP-11D15-12			12 VDC			8-1393113-6
KUEP-11D15-24			24 VDC			8-1393113-7
KUEP-11D15-48			48 VDC			8-1393113-8
KUEP-11D15-110			110 VDC			8-1393113-5