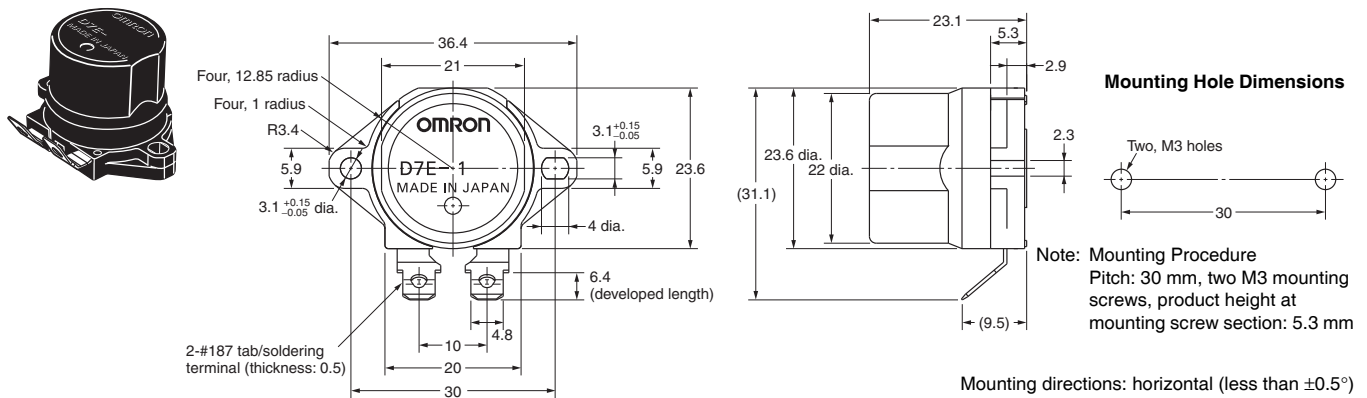


### ■ Dimensions (Unit: mm)

D7E-□



## ■ Safety Precautions

- If the mounting surface is not level, deformation from mounting may adversely affect operating characteristics.  
Do not use a mounting surface with warpage of more than 0.3 mm. Use M3 mounting screws and tighten them to 0.39 to 0.59 N·m.  
Use washers or other means to prevent loosening of the screws when mounting.
- Do not subject the Sensor to direct sunlight.
- Also, OMRON is not responsible for the deterioration of functions caused by washing with water, submersion in water, oil leaks, or contact with organic solvents.
- Do not use the Sensor in any location where vibration would adversely affect the operating acceleration or other mechanical characteristics (such as locations affected by opening and closing of doors, locations with passing vehicles, or other locations that are subject to vibration or shock from equipment or other sources).

## Regional Contact

## Americas

<https://www.components.omron.com/>

**Asia-Pacific**

<https://ecb.omron.com.sg/>

## Korea

<https://www.omron-ecb.co.kr/>

## Europe

<http://components.omron.eu/>

**China**

<https://www.ecb.omron.com.cn/>

## Japan

<https://www.omron.co.jp/ecb/>