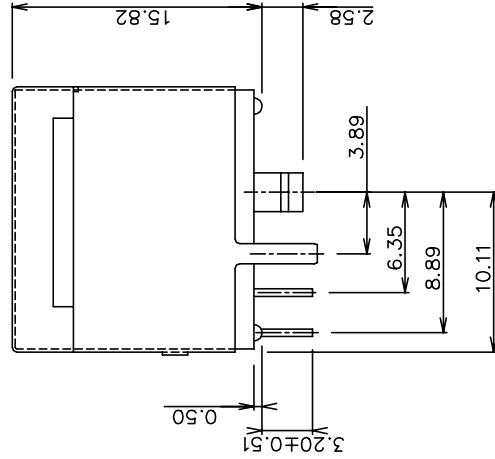
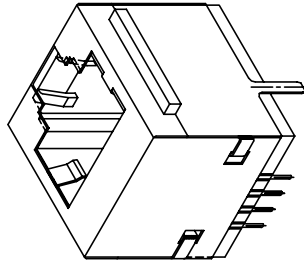
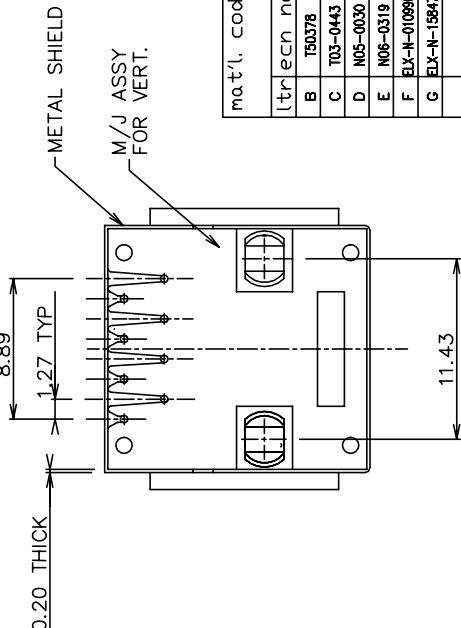
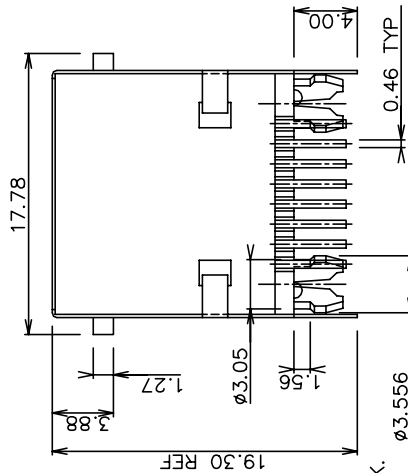
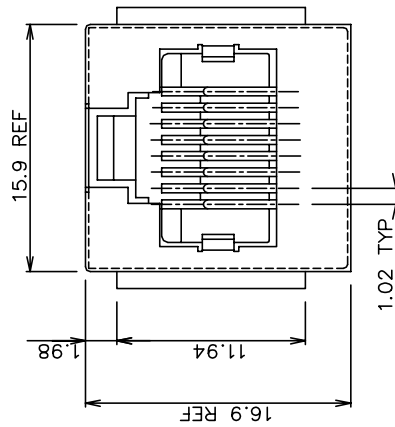


RECOMMENDED PC BOARD LAYOUT

NOTES:

1. RECOMMENDED P.C.B THICKNESS 1.60 MM
2. HOUSING MAT'L: NYLON 66, 25% G.F UL 94V-0, BLACK.
3. CONTACTS: PHOS BRONZE ALLOY UNS-C51000, ϕ 0.460 ROUND WIRE, PLATING SEE TABLE.
4. METAL SHELL MATERIAL:
COPPER ALLOY. 0.20mm THICK
FINISH:
FOR 94152-XXX TIN-LEAD 100u" THICK MIN.
FOR 94152-XXXLF PURE TIN 80u" THICK MIN.
5. PACKAGING: GES-14-351, USE TRAY
6. ALL DIMENSIONS IN MILLIMETER.
7. IF LF P/N THE PRODUCT MEETS EUROPEAN UNION DIRECTIVES AND OTHER COUNTRY REGULATIONS AS DESCRIBED IN GS-22-008.
8. THE HOUSING WILL WITHSTAND EXPOSURE TO 260°C PEAK TEMPERATURE FOR 10 SECONDS IN A WAVE SOLDER APPLICATION WITH A 1.60mm MINIMUM THICK CIRCUIT BOARD.
9. IF LF P/N PACKAGING MEETS GS-14-920 SPECIFICATION.



P/N	WIRE NUMBERS LOADED	PLATING
94152-088	ALL	5u" Au + high performance lubricant
94152-088LF	ALL	6u" GXT
94152-188LF	ALL	15u" GXT
94152-288LF	ALL	30u" GXT
94152-388LF	ALL	50u" GXT
94152-488LF	ALL	

mat'l. code	surface	tolerance	projection	product family
ISDI302	ISDI302	ISDI302	ISDI302	MOD JACK
tracen naddr	date	tolerances unless otherwise specified	title	
B T50378	12/18/95	0.XX±0.3	8 POS VERT P.C.B. M/J ASSY	
C T03-0443	12/06/03	0.XX±0.15	SHIELDED	
D N05-0030	02/05/05	0.XXX±0.05	scale 2.0	
E N06-0319	12/28/08	KCHOU	09/16/93	
F EX-N-01090	3/14/12	engr TONY CHIEN	09/16/93	
G EX-N-1847	09/13/13	chr TONY CHIEN	09/16/93	
sheet index	revising	sheet 1	awg no	sheet 1 of 1
			type	Product Customer Drawing
				94152