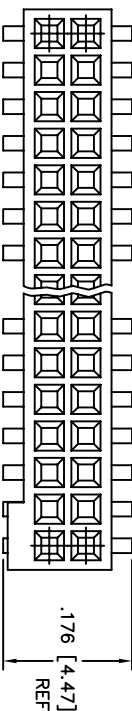


PRODUCT NO. NOTE 3, 9	SIZE	DIM A	DIM B	SPECIAL PACKAGING	TAPE WIDTH PITCH	PCS. PER REEL
87022-X05	2 X 5	.266/6.76	.200/5.08	NOTE 7	24mm 12mm	750
-X10	2 X 10	.516/13.11	.450/11.43	NOTE 7	24mm 12mm	750
-X15	2 X 15	.766/19.46	.700/17.78	NOTE 7	44mm 12mm	500
-X20	2 X 20	1.016/25.81	.950/24.13	NOTE 7	44mm 12mm	500
-X25	2 X 25	1.266/32.16	1.200/30.48	NOTE 7	44mm 12mm	500
-X30	2 X 30	1.516/38.51	1.450/36.83	NO	—	—
-X35	2 X 35	1.766/44.86	1.700/43.18	NO	—	—
-X40	2 X 40	2.016/51.21	1.950/49.53	NO	—	—
-X45	2 X 45	2.266/57.56	2.200/55.88	NO	—	—
87022-X50	2 X 50	2.516/63.91	2.450/63.23	NO	—	—
87022-X25 MIL.	2 X 25	1.266/32.16	1.200/30.48	NO	—	—

NOTE 6

NOTES :

- HOUSING MATERIAL : LCP GLASS FILLED . FLAME RETARDANT PER UL94V-0.
COLOR : NATURAL
- TERMINAL MATERIAL : BeCu
- TERMINAL PLATING :
3.1 87022-6XX
30u"/.76u MIN GOLD OR GXT OVER NI ON CONTACT ZONES.
100u"/2.54u MIN SP. OVER NI IN SOLDERING ZONES.
OTHERWISE GOLD FLASH OR UNPLATED. MATTE TIN FINISH AT SOLDERING ZONE.
- 87022-1XX
30u"/.76u MIN GOLD OVER NI ON CONTACT ZONES.
GOLD FLASH OVER NI IN OTHER ALL ZONES.
- APPLICATION INFORMATION:
 - RECOMMENDED MOUNTING PAD PATTERN IS SHOWN IN FIGURE "A".
 - MATING PINS TO BE .0176/0.447 TO .0181/0.459 DIA.
 - MATING PIN TIPS TO BE IN TRUE POSITION TO MATING GRID WITHIN .008/0.20 DIA.
 - SUGGESTED MATING PIN LENGTH .130/3.30 ±.010/0.25.

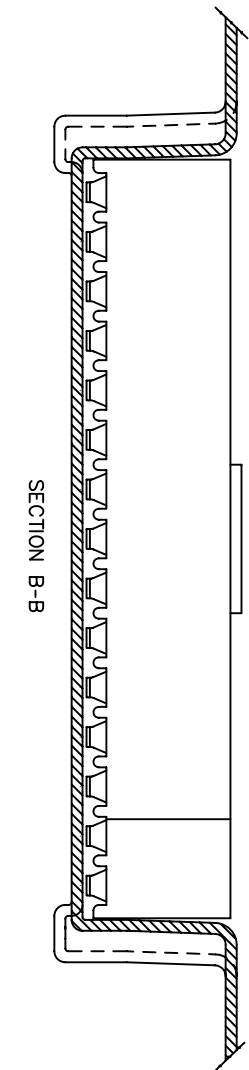
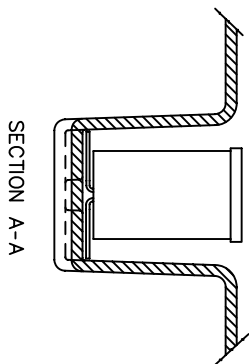
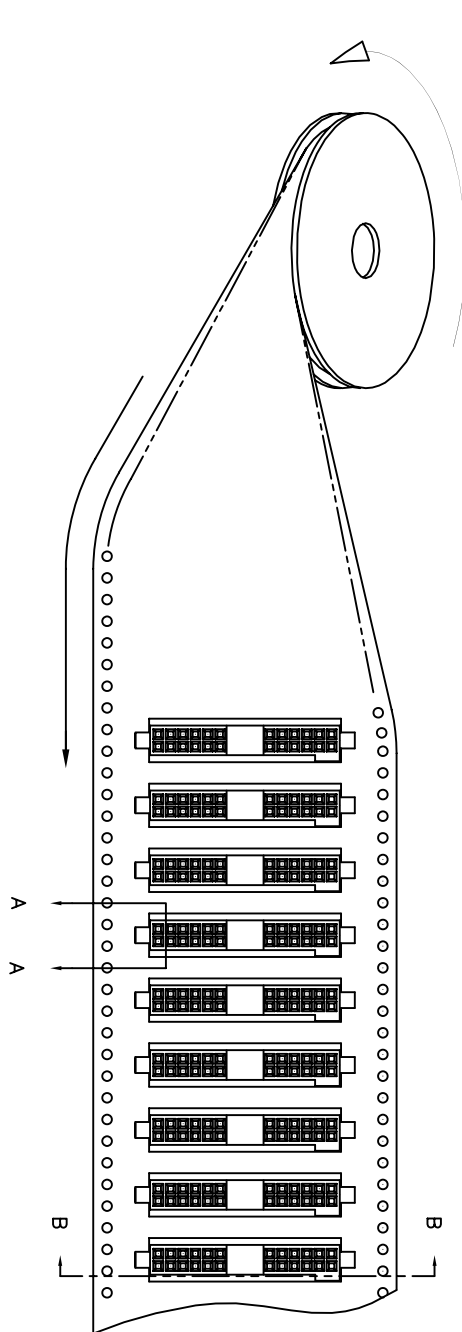
- LEAD TIPS TO BE ABOVE HEEL UP TO .007/0.18 MAX. COPLANARITY TO BE MEASURED AT LOWEST POINT (HEEL).
 - SOLDER TAIL SHALL BE FINISHED IN ACCORDANCE WITH MIL-STD-1276. HOT SOLDER DIP (FINISH 51) OR FUSED (REFLOWED) TIN LEAD PLATE (FINISH 34). 100u"/2.54u MIN.
- 
- ADD "TR" TO END OF DASH NUMBER FOR TAPE AND REEL PACKAGING WITH CAP. TOOLED ONLY FOR NOTED CONNECTORS.
 - ADD "CT" TO END OF DASH NUMBER FOR CONNECTOR WITH VACUUM CAP IN TUBE.
 - ADD "LF" SUFFIX AT THE END OF PART NUMBER FOR LEAD FREE OPTION.
 - THIS PRODUCT MEETS EUROPEAN UNION DIRECTIVES AND OTHER COUNTRY REGULATION AS DESCRIBED IN GS-22-008.
 - THE HOUSING WILL WITHSTAND EXPOSURE TO 260°C PEAK TEMPERATURE FOR 20 SECONDS IN A CONNECTION, INFRA-RED OR VAPOR PHASE REFLOW OVEN. SEE APPLICATION NOTES/PROCEDURES IF THEY ARE AVAILABLE.
 - PRODUCT SPEC PER BUS-12-087.

mat'l. code	surface	tolerance	projection	product family
litr	ISO 1302	ISO 406	INCH/MM	RIBBAGE
ec	no	dr	date	title
AC			angles	.050 CC VERT. C.C. ASS'Y.
			line of	SUR. MOUNT-POL.
			0±.27	
			dr	dwg no
			engr	sheet 2 of 3 size
			chr	A3
			appt	Product Customer Drawing
sheet	revision			
index	sheet			

PRODUCT NUMBER
SEE TABLE

UNREELING
DIRECTION

REFERENCE ONLY
TAPE WIDTH'S 32mm AND ABOVE HAS BOTH FEED TRACKS,
BELOW 32mm HAS TOP FEED TRACK ONLY.



mat'l. code			surface		✓	tolerance		projection	product family	
-			ISO 1302			ISO 406 ISO 1101			RIBPAGE	
litr	ecm no	dr	date		tolerances unless otherwise specified				title	
AC					angles	line of	.XX±.01/0.3 .XXX±.005/0.13	INCH/MM	.050 CC VERT. C.C. ASS'Y: SUR. MOUNT-POL.	
					0±.27	.XXXX±.0020/0.051			scale 4:1	
					dr	D. SHEAFFER			dwg no	
						12/6/88			sheet 3 of 3 size	
					engr	J. OSWALD			87022	
					chr	J. OSWALD			A3	
						12/6/88				
					appd	J. OSWALD				
						12/6/88				
sheet	revision									
index	sheet									