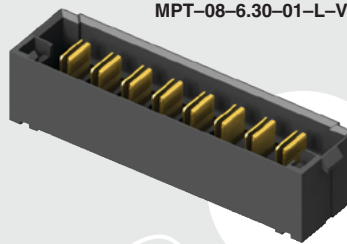
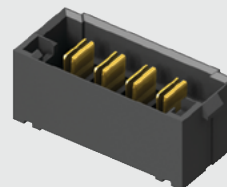


(5.00 mm) .1969"

MPT-08-6.30-01-L-V



MPT-04-6.30-01-L-V

**MPT SERIES**

30 A DUAL BLADE HEADER

SPECIFICATIONS

For complete specifications see www.samtec.com?MPT

Insulator Material:

Black LCP

Terminal Material:

Copper Alloy

Plating:

Sn or Au over

50 μ" (1.27 μm) Ni

Operating Temp Range:

-55 °C to +105 °C with Tin;

-55 °C to +125 °C with Gold

Voltage Rating:

575 VAC/812 VDC

Standard Creepage:

(2.86 mm) .113"

Standard Clearance:

(2.71 mm) .106"

RoHS Compliant:

Yes

Lead-Free Solderable:

Yes

Board Mates:

MPS

Cable Mates:

MPSS

MPT-V/MPS-V	
POWER PINS	CURRENT RATING (PER CONTACT)
1	28.8 A
2	24.7 A
3	24.1 A
4	22.3 A
8	18.5 A
-T PLATING	

Dual leaf blade contacts

5.00 mm pitch

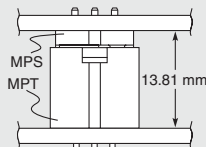
Polarized alignment feature

RECOGNITIONS

For complete scope of recognitions see www.samtec.com/quality



MATED HEIGHT



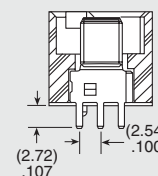
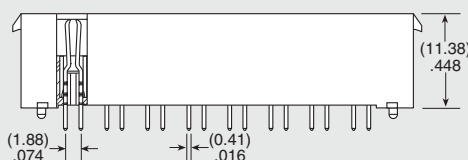
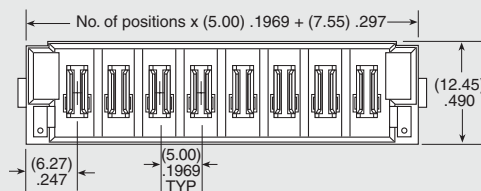
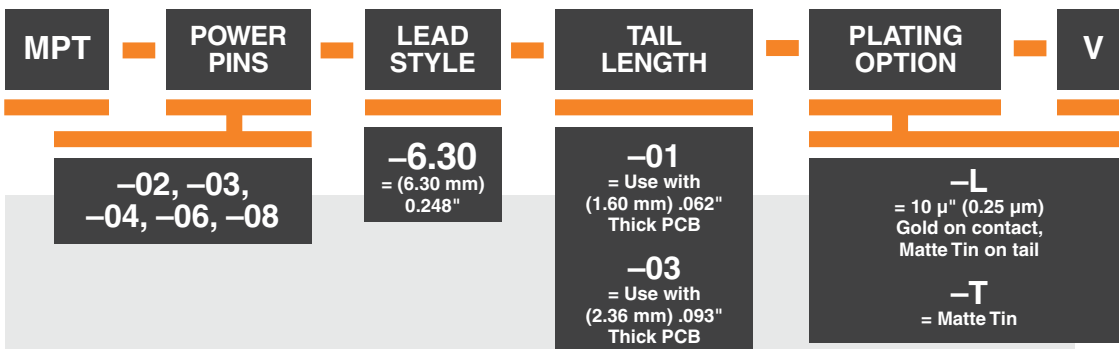
OTHER SOLUTIONS

- Power/Signal combination Headers (see MPTC Series)
- High Power Headers. (see PET Series)
- Right-angle (see MPT-RA Series)

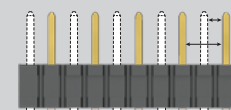
ALSO AVAILABLE (MOQ Required)

- Locking Clip (Manual placement required)

Note: Some sizes, styles and options are non-standard, non-returnable.



CREEPAGE AND CLEARANCE



Selectively loading contacts achieves customer specific creepage and clearance requirements. Contact asp@samtec.com

Due to technical progress, all designs, specifications and components are subject to change without notice.

WWW.SAMTEC.COM

All parts within this catalog are built to Samtec's specifications. Components must be approved by Samtec and identified in a Samtec customer-specific drawing to apply.