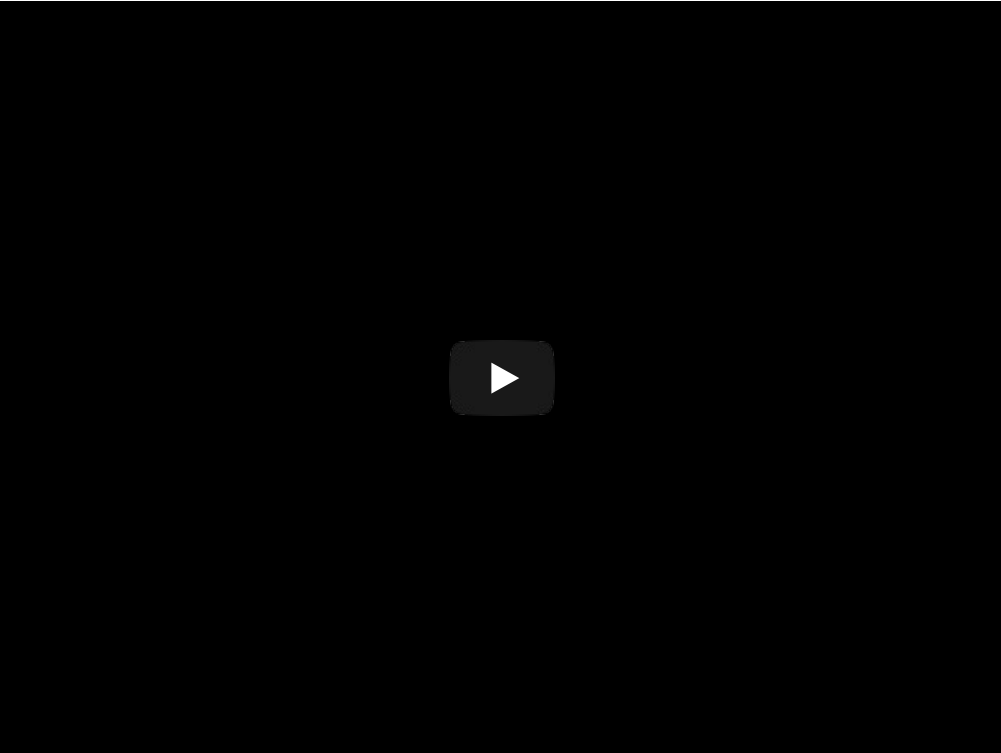


cardinal locations over time and turn those changes into gestures. Our interface library can detect directional gestures (left to right, right to left, up to down, down to up), but in theory more complicated gestures like zig-zag, clockwise or counterclockwise circle, near to far, etc. could also be detected with additional code.

The APDS9960 has a configurable interrupt that can fire when a certain proximity threshold is broken, or when a color sensor breaks a certain threshold.

For your convenience we've pick-and-placed the sensor on a PCB with a 3.3V regulator and some level shifting so it can be easily used with your favorite 3.3V or 5V microcontroller.

We've also prepared a [guide](#) and [software library](#) to get you up and running in Arduino IDE with just a few lines of code!



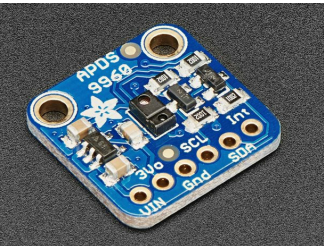
TECHNICAL DETAILS

Product Dimensions: 17.8mm x 17.8mm x 3.2mm / 0.7" x 0.7" x 0.1"

Product Weight: 1.3g / 0.0oz

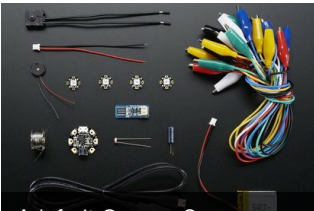
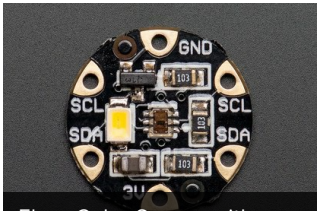
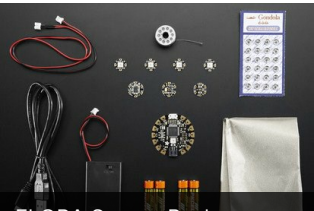


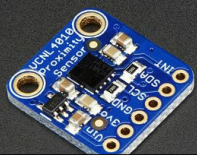
LEARN



[Adafruit APDS9960 breakout](#)
Digital Proximity, Ambient Light, RGB, and Gesture Sensor

MAY WE ALSO SUGGEST...

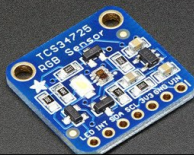




VCNL4010 Proximity/Light



Flora UV Index Sensor -



RGB Color Sensor with IR



Flora Lux Sensor - TSL2561



Photo Transistor Light



Analog UV Light Sensor



Adafruit AS7262 6-Channel

DISTRIBUTORS [EXPAND TO SEE DISTRIBUTORS](#)

[CONTACT](#)

[SUPPORT](#)

[DISTRIBUTORS](#)

[EDUCATORS](#)

[JOBS](#)

[FAQ](#)

[SHIPPING & RETURNS](#)

[TERMS OF SERVICE](#)

[PRIVACY & LEGAL](#)

[ABOUT US](#)

ENGINEERED IN NYC Adafruit®

*"Meaning can easily be confused
with structure. Structure is a good
approximation, but not the same" -
Claudia Perlich*



4.9 ★★★★★
Google
Customer Reviews